

GEODETIC CONTROL SURVEY

WILLOW LAKE CAMPGROUND

Located in T36S R3E Section 3 & T35S R3E Section 34, W.M.
Jackson County, Oregon

Survey Narrative To Comply With ORS 209.250

Survey For: Jackson County Parks
200 Antelope Rd.
White City, OR 97503

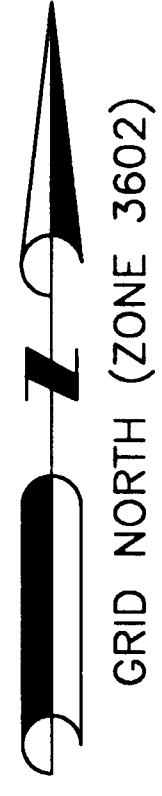
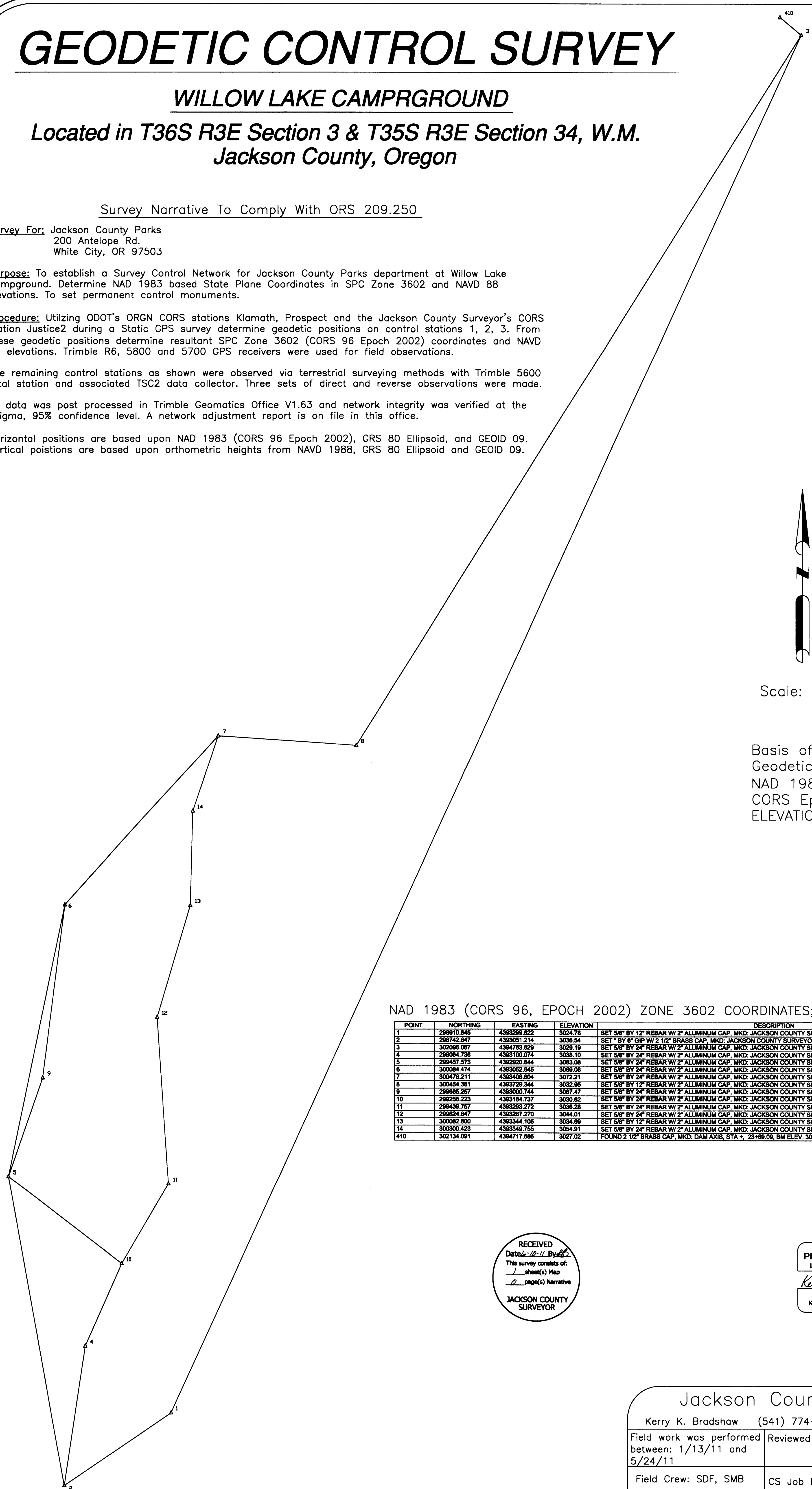
Purpose: To establish a Survey Control Network for Jackson County Parks department at Willow Lake Campground. Determine NAD 1983 based State Plane Coordinates in SPC Zone 3602 and NAVD 88 elevations. To set permanent control monuments.

Procedure: Utilizing ODOT's ORGN CORS stations Klamath, Prospect and the Jackson County Surveyor's CORS station Justice2 during a Static GPS survey determine geodetic positions on control stations 1, 2, 3. From these geodetic positions determine resultant SPC Zone 3602 (CORS 96 Epoch 2002) coordinates and NAVD 88 elevations. Trimble R6, 5800 and 5700 GPS receivers were used for field observations.

The remaining control stations as shown were observed via terrestrial surveying methods with Trimble 5600 total station and associated TSC2 data collector. Three sets of direct and reverse observations were made.

All data was post processed in Trimble Geomatics Office V1.63 and network integrity was verified at the 2sigma, 95% confidence level. A network adjustment report is on file in this office.

Horizontal positions are based upon NAD 1983 (CORS 96 Epoch 2002), GRS 80 Ellipsoid, and GEOID 09. Vertical positions are based upon orthometric heights from NAVD 1988, GRS 80 Ellipsoid and GEOID 09.

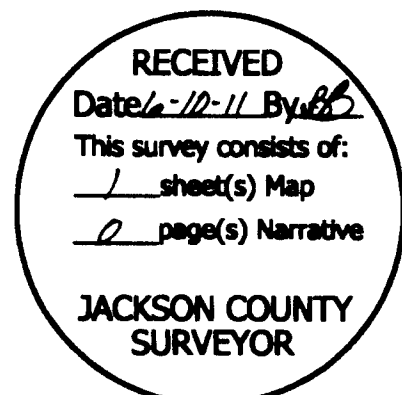


Scale: 1"=100'

Basis of Bearings:
Geodetic North per
NAD 1983 (1996)
CORS Epoch 2002
ELEVATION: NAVD 88

NAD 1983 (CORS 96, EPOCH 2002) ZONE 3602 COORDINATES; NAVD 88 ELEVATIONS

POINT	NORTHING	EASTING	ELEVATION	DESCRIPTION
1	298910.645	4393296.622	3024.78	SET 5/8" BY 12" REBAR W/ 2" ALUMINUM CAP. MKD: JACKSON COUNTY SURVEYOR, CP 1
2	298742.647	4393051.214	3036.54	SET * BY 8" GP W/ 2 1/2" BRASS CAP. MKD: JACKSON COUNTY SURVEYOR, CP 2
3	302096.067	4394763.629	3029.19	SET 5/8" BY 24" REBAR W/ 2" ALUMINUM CAP. MKD: JACKSON COUNTY SURVEYOR, CP 3
4	296064.736	4393100.074	3038.10	SET 5/8" BY 24" REBAR W/ 2" ALUMINUM CAP. MKD: JACKSON COUNTY SURVEYOR, CP 4
5	296457.573	4392920.844	3063.06	SET 5/8" BY 24" REBAR W/ 2" ALUMINUM CAP. MKD: JACKSON COUNTY SURVEYOR, CP 5
6	300064.474	4393052.645	3069.06	SET 5/8" BY 24" REBAR W/ 2" ALUMINUM CAP. MKD: JACKSON COUNTY SURVEYOR, CP 6
7	300476.211	4393408.804	3072.21	SET 5/8" BY 24" REBAR W/ 2" ALUMINUM CAP. MKD: JACKSON COUNTY SURVEYOR, CP 7
8	300454.381	4393729.344	3032.95	SET 5/8" BY 12" REBAR W/ 2" ALUMINUM CAP. MKD: JACKSON COUNTY SURVEYOR, CP 8
9	296685.257	4393000.744	3067.47	SET 5/8" BY 24" REBAR W/ 2" ALUMINUM CAP. MKD: JACKSON COUNTY SURVEYOR, CP 9
10	296256.223	4393184.737	3030.82	SET 5/8" BY 24" REBAR W/ 2" ALUMINUM CAP. MKD: JACKSON COUNTY SURVEYOR, CP 10
11	296439.757	4393293.272	3036.28	SET 5/8" BY 24" REBAR W/ 2" ALUMINUM CAP. MKD: JACKSON COUNTY SURVEYOR, CP 11
12	296824.647	4393267.270	3044.01	SET 5/8" BY 24" REBAR W/ 2" ALUMINUM CAP. MKD: JACKSON COUNTY SURVEYOR, CP 12
13	300062.800	4393344.105	3034.69	SET 5/8" BY 12" REBAR W/ 2" ALUMINUM CAP. MKD: JACKSON COUNTY SURVEYOR, CP 13
14	300300.423	4393349.755	3054.91	SET 5/8" BY 24" REBAR W/ 2" ALUMINUM CAP. MKD: JACKSON COUNTY SURVEYOR, CP 14
410	302134.091	4394717.686	3027.02	FOUND 2 1/2" BRASS CAP. MKD: DAM AXIS, STA +, 23+66.09, BM ELEV. 3021.52



Jackson County Surveyor
Kerry K. Bradshaw (541) 774-6191 Medford, OR 97501

Field work was performed between: 1/13/11 and 5/24/11	Reviewed By: KKB 6/10/11
Field Crew: SDF, SMB	CS Job File: 2011-04