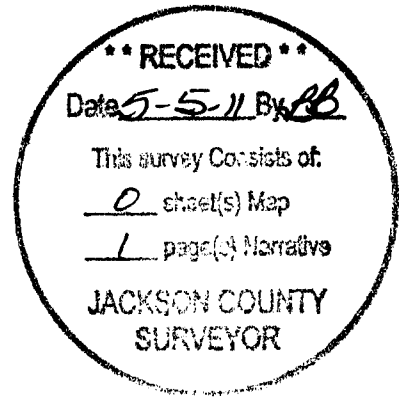


OREGON CORNER RESTORATION FORM

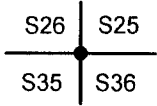
20863

Section 26 Township 33 S. Range 3 W.
 County Jackson Date 4/25/11



Corner Designation

T. 33 S. R. 3 W.



- Condition Report Only
- Not Found
- Renewed
- Unrecorded
- Surveyed In
- Referenced Out

Previous Renewals/Surveys, etc.

Jackson County Re - Establishment 600200, From Original Bearing Trees

Monument(s) & Accessories Found: (Condition and Source)

48" Douglas Fir Bears N24 3/4°E 31.7 Ft. (Record N24°E 30.7 Ft.) Healed Face and B.T. Tag

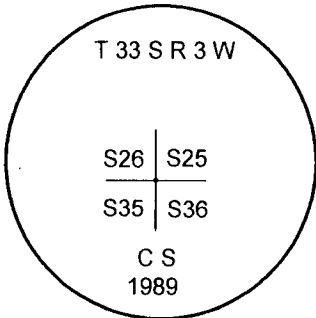
15" Yew Bears S65°E 21.0 Ft. (Record S67°E 20.52 Ft.) Healed Face and B.T. Tag

23" White Fir Bears S42 1/2°E 16.95 Ft. (Record S42°E 16.95 Ft.) Healed Face and B.T. Tag

18" White Fir Bears S25 1/4°W 14.4 Ft. (Record S25°W 13.9 Ft.) Healed Face and B.T. Tag

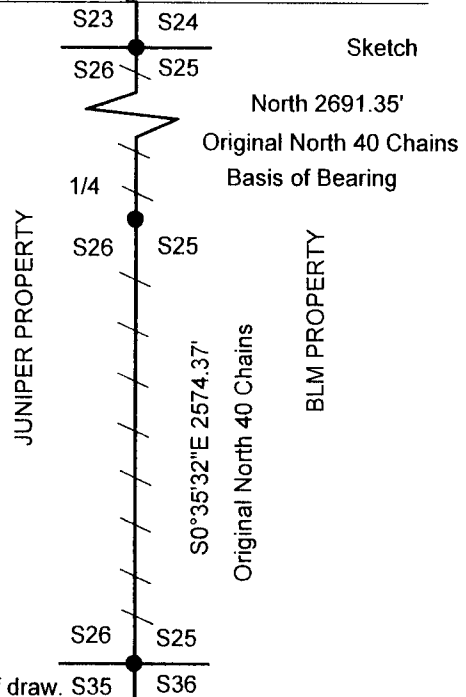
19" Douglas Fir Bears N73 3/4°W 14.3 Ft. (Record N73 1/2°W 14.85 Ft.) Healed Face and Tag

Monument Detail



LEGEND

- Found Monuments
- /— Lines Blazed & Painted



Monument Found

Jackson County Brass Cap lies on steep east facing slope approx. 70 feet west of draw. S35

New Accessories

Location & Comments

Lone Rock ran a random closed loop conventional survey from the Northeast to the Southeast section corners of section 26, to blaze and paint true line for timber management purposes. We located the above monument during the course of this survey.

Bearing Basis Original Plat - Survey E 1/4 To NESC Corner of Section 26
 Firm/Agency Lone Rock Timber Co.
 Address P. O. Box 1127 Roseburg, Ore. 97470
 Party Chief Ken W. Hoffine
 Notes G. Angiolet
 Witness _____

REGISTERED PROFESSIONAL LAND SURVEYOR
Ken W. Hoffine
 OREGON JULY 16, 1987
 KEN W. HOFFINE
 PLS 2291
 EXPIRES 6-30-11