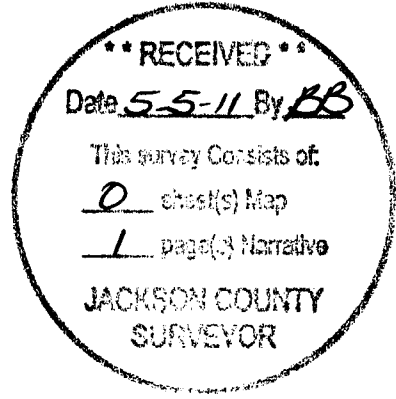


OREGON CORNER RESTORATION FORM

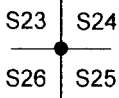
20862

Section 26 Township 33 S. Range 3 W.
 County Jackson Date 4/25/11



Corner Designation

T. 33 S. R. 3 W.



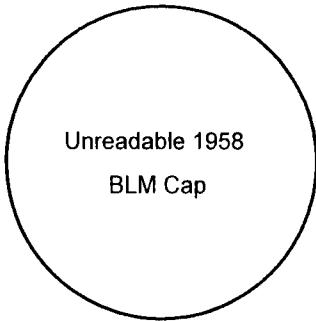
- Condition Report Only
- Not Found
- Renewed
- Unrecorded
- Surveyed In
- Referenced Out

Previous Renewals/Surveys, etc. Jackson County Surveyors Office first re-establishment,
GCDB 600300. BLM reestablishment 1958, From Original Bearing Trees.

Monument(s) & Accessories Found: (Condition and Source)

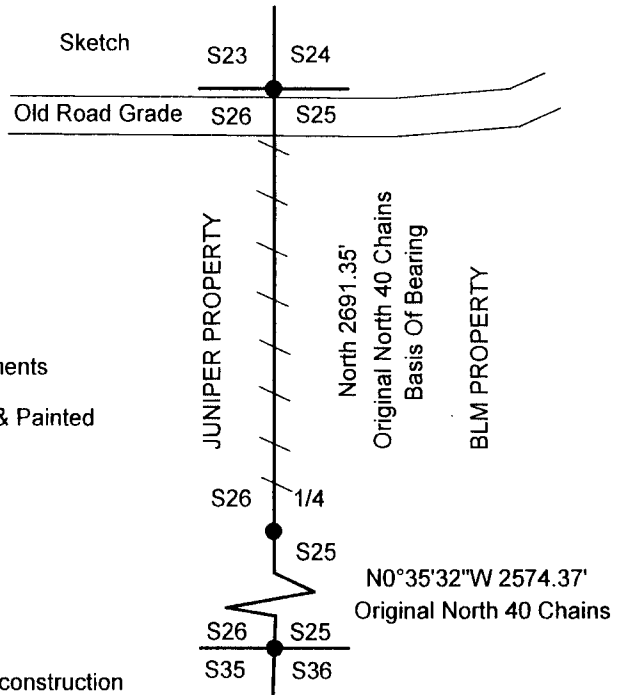
33" Douglas Fir Snag Bears N66°E 17.1 Ft. (Record N65°E 15.8 Ft.) visible "X" and B.T. Tag
26" Douglas Fir Snag Bears S73 1/2°W 19.15 Ft. (Record S76°W 18.2 Ft.) visible "X"

Monument Detail



LEGEND

- Found Monuments
- / — Lines Blazed & Painted



Monument Found

BLM 1958 Brass Cap is 2.5 feet below ground level due to old road construction

that buried corner. We uncovered corner and found it in good condition except that the cap was unreadable.

Corner lies at north edge of fill material of old road grade.

New Accessories

10" Douglas Fir Bears S8 1/2°E 46.4 Ft. We Scribe S25 BT and Tag Tree

7" Douglas Fir Bears N86 3/4°W 18.0 Ft. We Scribe S23 BT and Tag Tree

9" Douglas Fir Bears N15 3/4°E 18.3 Ft. We Scribe S24 BT and Tag Tree

Location & Comments

Lone Rock ran a random closed loop conventional survey from the Northeast to the Southeast section corners of section 26, to blaze and paint true line for timber management purposes. We located the above monument during the course of this survey.

Bearing Basis Original Plat - Survey E 1/4 To NESC Corner of Section 26.
 Firm/Agency Lone Rock Timber Co.
 Address P. O. Box 1127 Roseburg, Ore. 97470
 Party Chief Ken W. Hoffine
 Notes G. Angiolet
 Witness _____

REGISTERED PROFESSIONAL LAND SURVEYOR
Ken W Hoffine
 OREGON JULY 16, 1987
 KEN W. HOFFINE
 PLS 2291
 EXPIRES 6-30-11