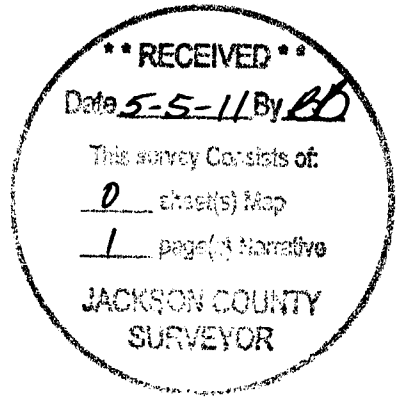


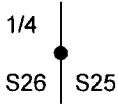
OREGON CORNER RESTORATION FORM

Section 26 Township 33 S. Range 3 W.
County Jackson Date 4/25/11



Corner Designation

T. 33 S. R. 3 W.



- Condition Report Only
- Not Found
- Renewed
- Unrecorded
- Surveyed In
- Referenced Out

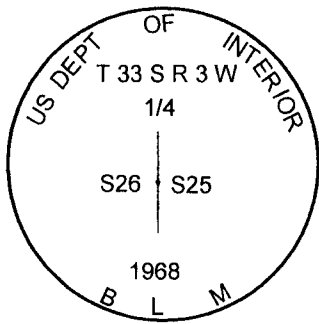
Previous Renewals/Surveys, etc.
From Original Bearing Trees.

BLM 1968 Reestablishment of Original Corner

Monument(s) & Accessories Found: (Condition and Source)

43" Cedar Snag Bears S59°W 12.7 Ft. (Record S56°W 11.88 Ft.) Healed Face and B.T. Tag
23" Douglas Fir Bears N34°E 12.9 Ft. (Record N34 1/2°E 13.2 Ft.) Healed Face No Tag

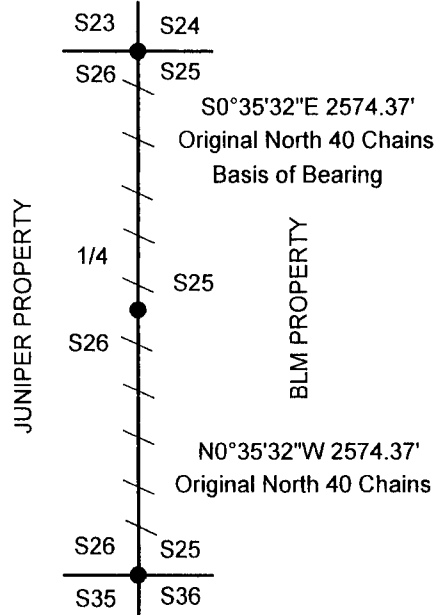
Monument Detail



LEGEND

- Found Monuments
- / — Lines Blazed & Painted

Sketch



Monument Found

BLM 1968 Brass Cap 0.3 feet above ground on west facing slope.

New Accessories

16" Douglas Fir Bears S21 3/4°W 16.5 Ft. We Scribe 1/4 S26 BT and Tag Tree

Location & Comments

Lone Rock ran a random closed loop conventional survey from the Northeast to the Southeast section corners of section 26, to blaze and paint true line for timber management purposes. We located the above monument during the course of this survey.

Bearing Basis Original Plat - Survey E1/4 To NESC Corner of Section 26

Firm/Agency Lone Rock Timber Co.

Address P. O. Box 1127 Roseburg, Ore. 97470

Party Chief Ken W. Hoffine

Notes G. Angiolet

Witness _____



EXPIRES 6-30-11