

SURVEYED FOR: JUNIPER PROPERTIES, LLC

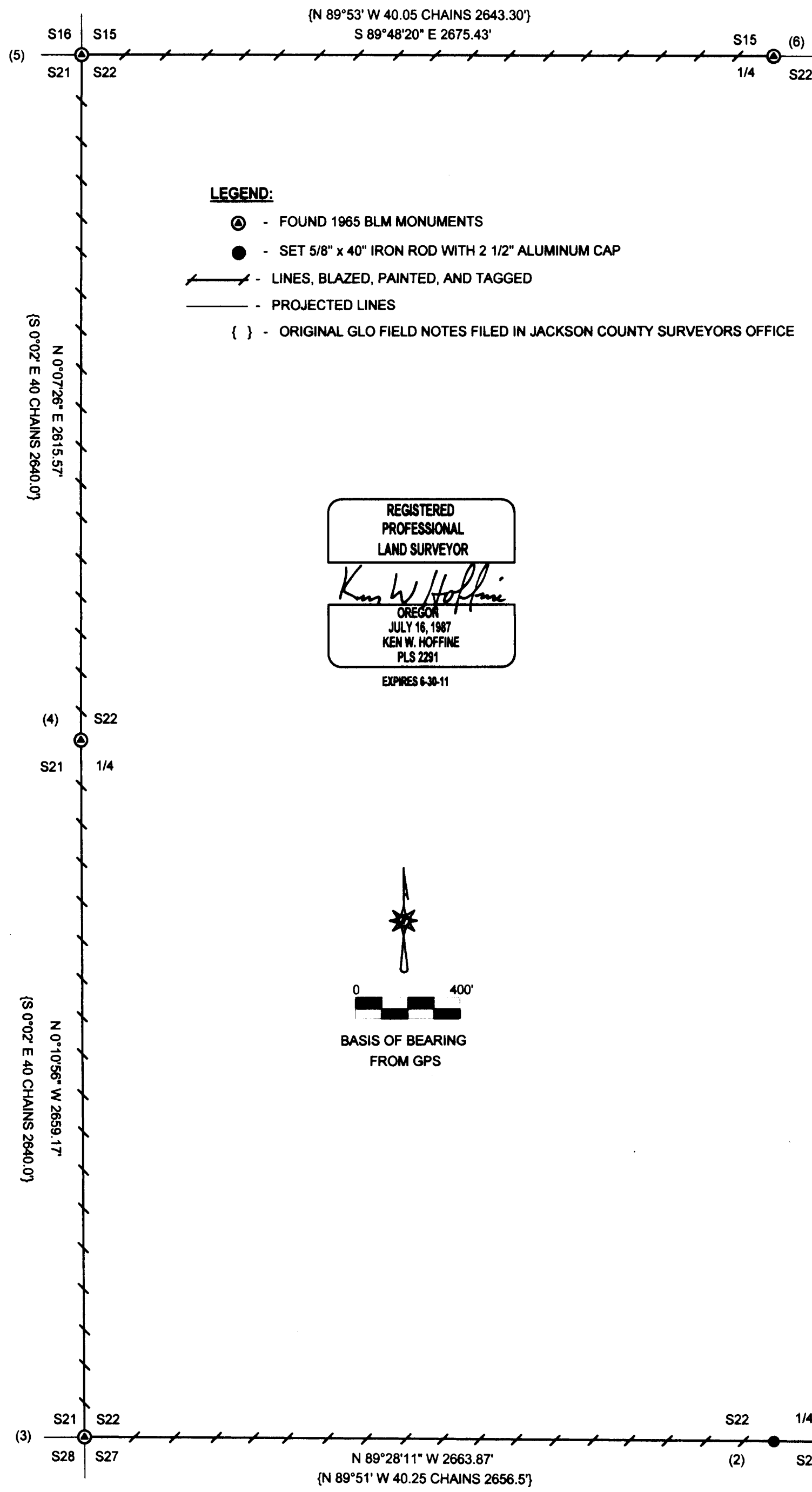
SECTION 22 T. 33 S. R. 2 E., W. M.

JACKSON COUNTY, OREGON

SURVEYED BY: LONE ROCK TIMBER MANAGEMENT CO.

P.O. BOX 1127 ROSEBURG, OREGON 97470

MARCH 2011

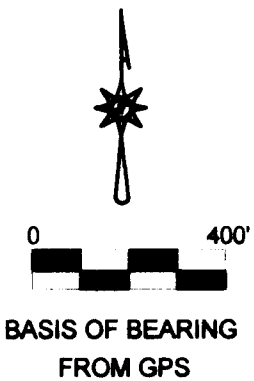


- LEGEND:**
- ⊙ - FOUND 1965 BLM MONUMENTS
 - - SET 5/8" x 40" IRON ROD WITH 2 1/2" ALUMINUM CAP
 - / — - LINES, BLAZED, PAINTED, AND TAGGED
 - - PROJECTED LINES
 - { } - ORIGINAL GLO FIELD NOTES FILED IN JACKSON COUNTY SURVEYORS OFFICE

REGISTERED
PROFESSIONAL
LAND SURVEYOR

Ken W. Hoffine

OREGON
JULY 16, 1987
KEN W. HOFFINE
PLS 2291
EXPIRES 6-30-11



NARRATIVE:

THE PURPOSE OF THIS SURVEY IS TO SET PROPERTY CORNER AND MARK PROPERTY LINES FOR TIMBER MANAGEMENT PURPOSES. WE INITIATED THIS SURVEY AT THE SOUTHEAST CORNER OF SECTION 22. WE PERFORMED A GPS SURVEY TO ESTABLISH CONTROL POINTS FOR A BASE LINE NEAR THE SOUTHEAST CORNER OF SECTION 2 AND A CONTROL POINT NEAR THE NORTH 1/4 OF SECTION 22. WE THEN RAN A CONVENTIONAL RANDOM TRAVERSE SURVEY ALONG THE SECTION LINES TO THE SOUTHWEST, WEST 1/4, NORTHWEST AND NORTH 1/4 CORNERS RESPECTIVELY WHICH ARE ALL BLM BRASS CAPS SET FROM ORIGINAL EVIDENCE. WE SEARCHED FOR BUT DID NOT FIND CONCLUSIVE EVIDENCE FOR THE SOUTH 1/4 OF SECTION 22 TO REESTABLISH THE CORNER AT ITS ORIGINAL POSITION. WE SET THE SOUTH 1/4 CORNER AT PROPORTIONAL DISTANCE AS PER BLM MANUAL OF SURVEY INSTRUCTIONS. THE CORNER LIES IN A DRY WASH AS DESCRIBED IN THE ORIGINAL NOTES, BUT THE AREA IS NOW HEAVILY DISTURBED FROM LOGGING. THE ORIGINAL SOUTH 1/4 HAD A 8" MAPLE TREE BEARING S14°E, 16.5. WE FOUND FROM OUR PROPORTIONED SOUTH 1/4 A MAPLE RESPROUTED CLUMP BEARING S25 1/4°E, 20.2 FEET WHICH MAY BE REMAINS OF THE ORIGINAL BEARING TREE BUT NO MARKS ARE EVIDENT ON THE TREE. WE MARKED THE SECTION LINES AS SHOWN BY FLAGGING, BLAZING, PAINTING AND TAGGING WITH ALUMINUM TAGS. THIS SURVEY WAS DONE WITH TRIMBLE 4400 AND 4000 GPS RECEIVERS AND A NIKON 522 TOTAL STATION WITH GARY ANGIOLET, DAN SAILY, DAVE RING AND IGNACIO ROMAN ASSISTING ME.

- 1) THE SOUTHEAST SECTION CORNER OF SECTION 22
FOUND 1965 BLM BRASS CAP.
- 55" DOUGLAS FIR BEARS N7°E, 31.4 FEET (RECORD N7°E, 31.68 FEET) HEALED FACE AND TAG
- 32" DOUGLAS FIR STUMP N63°W, 53.3 FEET (RECORD N63°W, 52.14 FEET) OPEN FACE AND 2 TAGS
- 20" DOUGLAS FIR BEARS S83°W, 56.1 FEET AS PER RECORD, HEALED FACE AND TAG
- 18" WHITE FIR BEARS N20°W, 36.96 FEET AS PER RECORD, HEALED FACE AND TAG
CORNER LIES IN REMAINS OF DOWN LOG.
- 2) THE QUARTER CORNER BETWEEN SECTIONS 22 AND 27
SET 5/8" X 30" IRON ROD WITH 2 1/2" ALUMINUM CAP MARKED LONE ROCK TIMBER T33S, R2E 1/4 S22 S27 2011 PLS 2291, 0.3 FEET ABOVE GROUND.
- 12" DOUGLAS FIR BEARS S74 3/4 °E, 14.0 FEET, WE SCRIBE 1/4 S27 B.T. AND TAG TREE
- 21" DOUGLAS FIR BEARS N78 1/4°W, 26.8 FEET, WE SCRIBE 1/4 S22 B.T. AND TAG TREE
- 14" DOUGLAS FIR BEARS N14°W, 22.1 FEET, WE SCRIBE 1/4 S22 B.T. AND TAG TREE
- 13" DOUGLAS FIR BEARS S71 1/4° W, 37.4 FEET, WE SCRIBE 1/4 S27 B.T. AND TAG TREE
CORNER LIES ON EAST EDGE OF DRY GULCH APPROXIMATELY 60 FEET SOUTHEAST OF 27.1 ROAD AND APPROXIMATELY 25 FEET WEST OF SKID ROAD. WE PUT METAL FENCE POST APPROXIMATELY 1.0 FEET EAST OF CORNER.
- 3) THE SOUTHWEST CORNER OF SECTION 22
FOUND 1965 BLM BRASS CAP AT GROUND LEVEL.
- 11" DOUGLAS FIR BEARS S44 1/2°E, 31.4 FEET (RECORD S44°E, 31.5 FEET) HEALED FACE AND TAG
- 15" WHITE FIR BEARS N3 1/4°E, 4.8 FEET (RECORD N4°E, 4.62 FEET) HEALED FACE AND TAG
- 20" WHITE FIR BEARS S89°W, 14.8 FEET (RECORD S86°W, 15.18 FEET) HEALED FACE AND TAG
- 20" WHITE FIR BEARS N73°W, 21.5 FEET (RECORD N74°W, 21.78 FEET) HEALED FACE AND TAG
CORNER LIES APPROXIMATELY 73 FEET EAST OF A DECOMMISSIONED ROAD THAT LED INTO A LARGE AREA OF BLOWN DOWN TIMBER.
- 4) THE QUARTER CORNER BETWEEN SECTIONS 21 AND 22
FOUND 1965 BLM BRASS CAP AT GROUND LEVEL IN MOUND OF STONES.
- 24" WHITE FIR BEARS N88 1/4°E, 12.6 FEET (RECORD N88°E, 12.5 FEET) HEALED FACE AND TAG
- 18" FIR SNAG BEARS S77°W, 11.3 FEET (RECORD S79 1/4°W, 11.2 FEET) HEALED DOUBLE BLAZE AND TAG
- 16" WHITE FIR BEARS S25 1/2°W, 26.3 FEET (RECORD S28 3/4°W, 26.4 FEET) HEALED FACE AND COUNTY TAG
- 10" WHITE FIR BEARS N59 1/4°W, 13.7 FEET (RECORD N57°W, 13.6 FEET) HEALED DOUBLE BLAZE AND COUNTY TAG
- 14" WHITE FIR BEARS S7 1/2°E, 20.9 FEET (RECORD S3 1/2°E, 21.3 FEET) HEALED DOUBLE BLAZE AND COUNTY TAG
CORNER LIES APPROXIMATELY 120 FEET NORTH OF 21.0 ROAD.
- 5) THE NORTHWEST SECTION CORNER OF SECTION 22
FOUND 1965 BLM BRASS CAP 0.8 FEET ABOVE GROUND.
- 32" DOUGLAS FIR BEARS N75°E, 6.1 FEET (RECORD N80°E, 5.3 FEET) HEALED FACE AND TAG
- 29" DOUGLAS FIR BEARS S24°W, 10.2 FEET (RECORD S25°W, 10.56 FEET) HEALED FACE, NO TAG
- 22" DOUGLAS FIR BEARS N74°E, 21.4 FEET (RECORD N66°E, 22.44 FEET) HEALED FACE AND TAG
- 30" DOUGLAS FIR BEARS N20°W, 46.0 FEET (RECORD N21°W, 45.54 FEET) HEALED FACE AND TAG
CORNER LIES ON WEST FACING SLOPE WEST OF OUTCROP OF ROCKS.
- 6) THE QUARTER CORNER BETWEEN SECTIONS 15 AND 22
FOUND 1965 BLM BRASS CAP 0.3 FEET ABOVE GROUND.
- 21" WHITE FIR BEARS S3 1/2°E, 5.5 FEET (RECORD S1°E, 5.4 FEET) DOUBLE BLAZE AND COUNTY TAG
- 10" WHITE FIR BEARS N7°E, 33.65 FEET (RECORD N5 3/4°E, 33.5 FEET) DOUBLE BLAZE AND COUNTY TAG
- 16" WHITE FIR HIGH STUMP BEARS S55°W, 27.1 FEET AS PER RECORD, HEALED FACE AND TAG
- ROTTEN STUMP BEARS N13°W, 19.1 FEET AS PER RECORD
CORNER LIES ON NORTH FACING SLOPE APPROXIMATELY 175 FEET EAST OF END OF 22.8 ROAD.

RECEIVED

Date 4-1-11 By [Signature]

This survey consists of:
1 sheet(s) Map
1 page(s) Narrative

JACKSON COUNTY
SURVEYOR