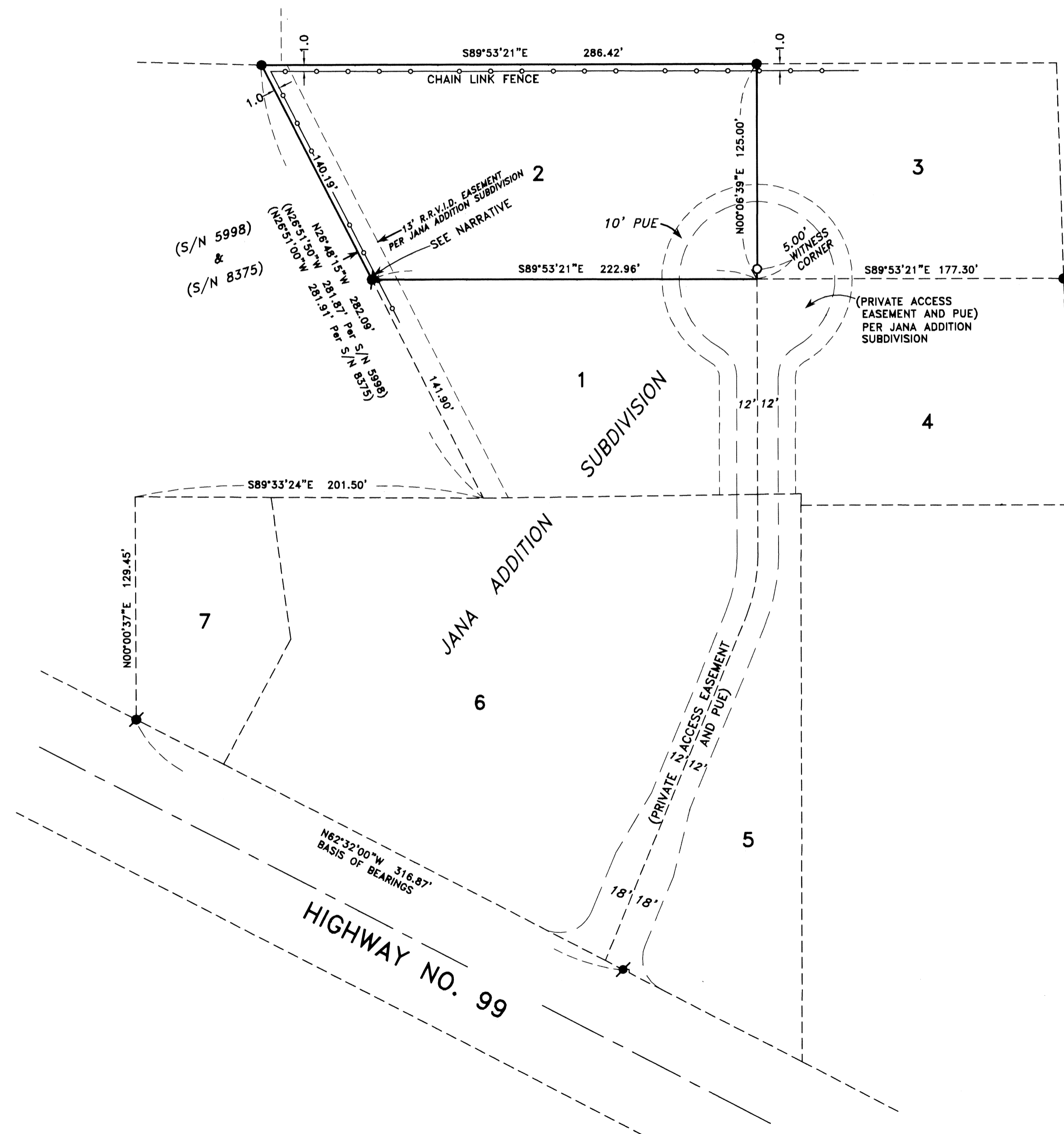


MAP OF SURVEY

LOCATED IN:
 LOT 2, JANA ADDITION SUBDIVISION, IN
 THE S.W. 1/4 OF SECTION 13, T.37S., R.2W., W.M.
 CITY OF MEDFORD, JACKSON COUNTY, OREGON



SURVEY NARRATIVE TO COMPLY WITH PARAGRAPH 209.250
 OREGON REVISED STATUTES

PURPOSE: To locate existing monuments and replace any missing monuments of Lot 2 in Jana Addition Subdivision

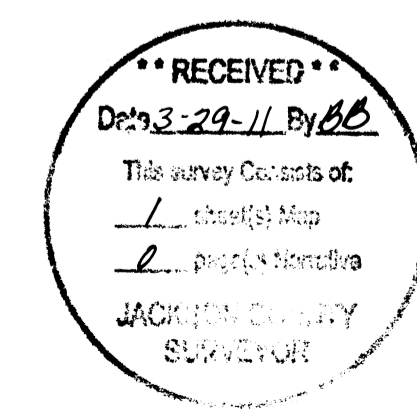
PROCEDURE: Lot 2 of Jana Addition Subdivision was originally monumented and filed for record on May 24, 2001. I found 5/8 inch iron rebar with plastic cap stamped D. McMahan L.S. 1913, at the northwest and northeast corners of Lot 2. The southwest corner was originally set as a lead and tack in concrete and is now covered by a large storage container. The southeast corner has been removed by catch basin construction so I placed a 5.00 foot witness corner, on the east line of Lot 2 and 5.00 feet north of the true Lot corner. Survey control established by this office to accomplish the survey for Jana Addition Subdivision was used for this survey.

Equipment used: Trimble S6 robotic instrument.

HOFFBUHR & ASSOCIATES, INC.
 880 GOLFVIEW DRIVE, STE 201, MEDFORD, OREGON
 (541)779-4641
 BY: DARRELL L. HUCK PLS No. 2023
 SCALE: 1 inch = 50 feet MARCH 2, 2011
 BASIS OF BEARING: JANA SUBDIVISION



- = Set 5/8"x24" rebar with plastic cap
- ⦿ = Found lead plug and tack with washer stamped "LS 1913" per Jana Subdivision
- = Found 5/8" rebar with plastic cap stamped "D.MCMAHAN LS 1913" per Jana Addition Subdivision
- PUE = Easement for public utilities, storm drainage, irrigation, gas, water, electric, telephone, cable television and sanitary sewer construction and maintenance
- S/N = Filed Survey Number
- R.R.V.I.D. = Rogue River Valley Irrigation District



REGISTERED
 PROFESSIONAL
 LAND SURVEYOR

Darrell L. Huck
 OREGON
 FEBRUARY 4, 1983
 DARRELL L. HUCK
 2023
 Expires 6/30/2011