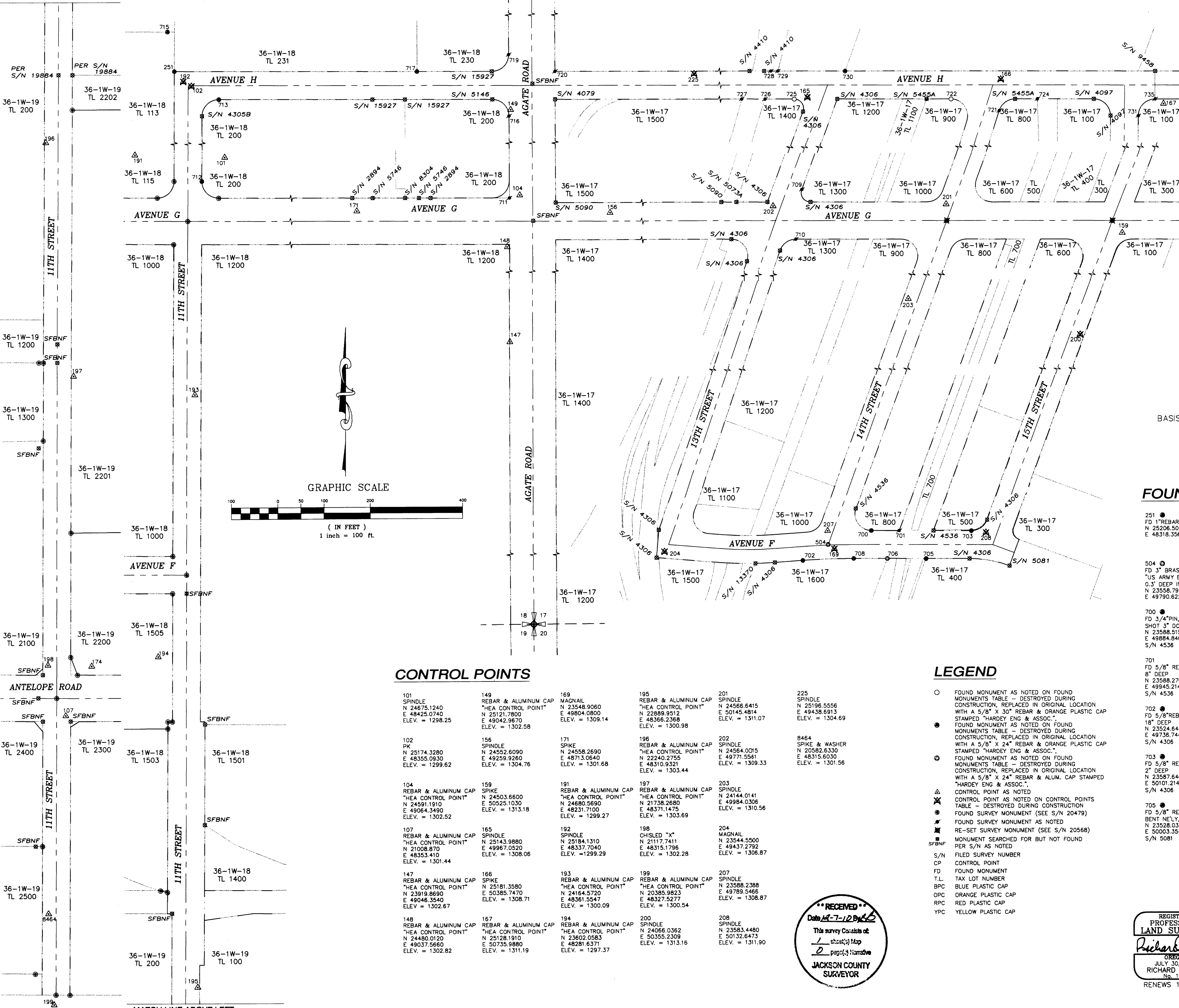


MATCH LINE BELOW RIGHT

**MAP OF SURVEY
FOR
HORIZONTAL CONTROL
AND
MONUMENT RECOVERY
11TH STREET, AVENUE H, AVE F,
13TH, 14TH & 15TH STREETS
SITUATED IN
SECTION'S 17, 18 & 19, T36S, R1W, WM
JACKSON COUNTY, OREGON**



NARRATIVE

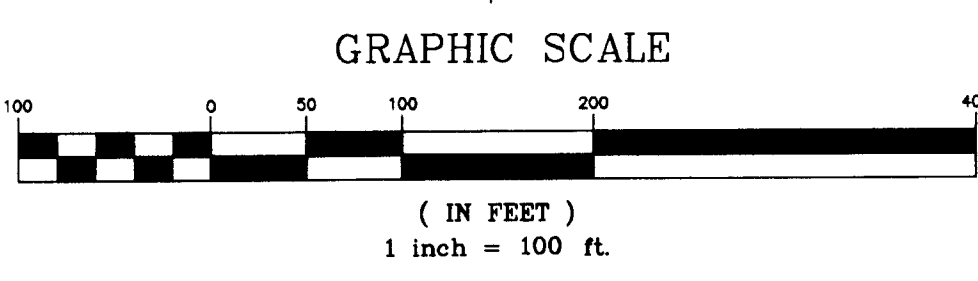
SURVEY FOR: URBAN RENEWAL AGENCY of JACKSON COUNTY
10 SOUTH OAKDALE, ROOM #208
MEDFORD, OR 97501

PURPOSE: TO REPLACE MONUMENTATION THAT WAS DESTROYED
DURING IMPROVEMENTS ON PORTIONS OF 11TH STREET,
13TH STREET, 14TH STREET, 15TH STREET, AVENUE F,
AVENUE G, AVENUE H AND AGATE ROAD.

PROCEDURE: USING CONTROL PREVIOUSLY ESTABLISHED FOR S/N 20479
A CLOSED TRAVERSE WAS RUN TYING ALL FOUND PROPERTY
CORNER MONUMENTS AND STREET MONUMENTS OF RECORD
INTO OUR CONTROL NET. OUR PRIMARY CONTROL POINTS
FOR THIS AREA ARE SHOWN ON THIS MAP.

BASIS OF BEARINGS: AGATE SUBDIVISION EXT. NO. 2
COORDINATES ARE ASSUMED

DATE: NOVEMBER 2010



FOUND MONUMENTS (OR RE-SET AS NOTED)

251 ● FD 1" REBAR IN CONCRETE N 25206.5080 E 48318.3560	706 ● FD RPC "BOYDEN PLS 261" DAMAGED CAP, 6" DEEP N 23528.5990 E 49920.1580 S/N 13370	715 ● FD OPC, "HARDEY ENG. & ASSOC.", FLUSH N 25292.0420 E 48303.6150 S/N 20271	725 ○ FD 3/4" SMOOTH PIN 2" DEEP N 25140.7140 E 49939.0270 S/N 4306
504 ● FD 3/4" BRASS DISK "US ARMY ENGINEERS" 0.3' DEEP IN AC N 23558.7960 E 49790.6220	708 ● FD 3/4" REBAR 20" DEEP N 23528.6040 E 49846.8020 S/N 4306	716 ● FD 5/8" REBAR IN CONC IN CONCRETE CURB N 25108.1650 E 49039.3850 S/N 5146	726 ● FD 5/8" SMOOTH PIN, 6" DEEP BENT, SHOT 8" DOWN N 25140.8130 E 49876.1950 S/N 5073A
700 ● FD 3/4" PIN, BENT SHOT 3" DOWN N 24599.4630 E 48884.8400 S/N 4536	709 ● FD 3/4" SMOOTH PIN, BENT & SPINNING, SHOT 6" DOWN N 24599.4630 E 48833.2590 S/N 4306	717 ● FD OPC "HARDEY ENG. & ASSOC.", 4" DEEP N 25204.6210 E 48841.0660 S/N 15927	727 ● FD 5/8" SMOOTH PIN, BENT & SPINNING, FLUSH, SHOT 8" DOWN N 25141.2360 E 49825.5270 S/N 5090
701 ● FD 5/8" REBAR 8" DEEP N 24492.6120 E 49945.2140 S/N 4536	710 ● FD 1 1/2" ALUM. CAP "BOYDEN PLS 261", 4" DOWN N 24492.6120 E 49820.7730 S/N 4306	719 ● FD TAG-TACK, "LS 1069" IN CONCRETE CURB N 25204.2200 E 49038.6090 S/N 15927	728 ● FD YPC, "KAISER RLS 803" SET IN CONCRETE N 25201.0130 E 49888.7280 S/N 9458
702 ● FD 3/4" REBAR 18" DEEP N 23524.6440 E 49736.7440 S/N 4306	711 ● FD 3/4" REBAR 2" DEEP N 24585.3430 E 49042.1080 S/N 8304	720 ● FD 3/4" SMOOTH PIN FLUSH N 24585.3060 E 49136.8590 S/N 4097	729 ● FD YPC, "KAISER RLS 803" SET IN CONCRETE N 25200.9270 E 49903.9260 S/N 9458
703 ● FD 5/8" REBAR 2" DEEP N 23587.6460 E 50101.2140 S/N 4306	712 ● FD 5/8" SMOOTH PIN, BENT & SPINNING, SHOT 8" DOWN N 24623.7570 E 48376.3040 S/N 4305B	721 ● FD 3/4" REBAR N 25114.1600 E 50382.3910 S/N 5455A	730 ● FD 5/8" W/PC REMNANTS SET IN CONCRETE N 25200.4300 E 50048.5630 S/N 9458
705 ● FD 5/8" REBAR, BENT 90°, SHOT 8" DEEP N 23528.0380 E 50003.3540 S/N 5081	713 ● FD 5/8" SMOOTH PIN, FLUSH LEANS NLY, SHOT TOP N 25146.0280 E 48414.2370 S/N 46305B	722 ○ FD 3/4" SMOOTH PIN N 25139.5610 E 50278.2510 S/N 5455A	731 ● FD 5/8" REBAR 2" DEEP N 25102.1910 E 50171.7850 S/N 4097
	724 ● FD 5/8" W/PC REMNANTS SHOT WITH OFFSET N 25138.9290± E 50484.8520± S/N 9458		735 ● FD YPC "KAISER RLS 803" SET IN CONCRETE N 25138.1280 E 50171.7850 S/N 9458

CONTROL POINTS

101 SPINDLE N 24675.1240 E 48425.0740 ELEV. = 1298.25	149 REBAR & ALUMINUM CAP "HEA CONTROL POINT" N 25121.7800 E 49042.9670 ELEV. = 1302.58	169 MAGNAIL N 23548.9060 E 49804.0800 ELEV. = 1309.14	195 REBAR & ALUMINUM CAP "HEA CONTROL POINT" N 22889.9512 E 48366.2368 ELEV. = 1300.98	201 SPINDLE N 24566.6415 E 50145.4814 ELEV. = 1311.07	225 SPINDLE N 25196.5556 E 49438.6913 ELEV. = 1304.69
102 PK N 25174.3280 E 48355.0930 ELEV. = 1299.62	156 SPINDLE N 24552.8090 E 49259.9260 ELEV. = 1304.76	171 SPIKE N 24558.2690 E 48713.0640 ELEV. = 1301.68	196 REBAR & ALUMINUM CAP "HEA CONTROL POINT" N 22240.2755 E 48310.9321 ELEV. = 1303.44	202 SPINDLE N 24564.0015 E 49771.5561 ELEV. = 1309.33	8464 SPIKE & WASHER N 20582.6330 E 48315.6030 ELEV. = 1301.56
104 REBAR & ALUMINUM CAP "HEA CONTROL POINT" N 24591.1910 E 49064.3490 ELEV. = 1302.52	159 SPIKE N 24503.6600 E 50525.1030 ELEV. = 1313.18	191 REBAR & ALUMINUM CAP "HEA CONTROL POINT" N 24680.5690 E 48231.7100 ELEV. = 1299.27	197 REBAR & ALUMINUM CAP "HEA CONTROL POINT" N 21738.2680 E 48371.1475 ELEV. = 1303.69	203 SPINDLE N 24144.0141 E 49964.0306 ELEV. = 1310.56	
107 REBAR & ALUMINUM CAP "HEA CONTROL POINT" N 21008.870 E 48353.410 ELEV. = 1301.44	165 SPINDLE N 25143.9880 E 49967.0520 ELEV. = 1308.06	192 SPINDLE N 25184.1310 E 48337.7040 ELEV. = 1299.29	198 CHISEL "X" N 21117.7411 E 49437.2792 ELEV. = 1302.28	204 MAGNAIL N 23544.5500 E 49327.2792 ELEV. = 1308.87	
147 REBAR & ALUMINUM CAP "HEA CONTROL POINT" N 23919.8690 E 49046.3540 ELEV. = 1302.67	166 SPIKE N 25181.3580 E 50385.7470 ELEV. = 1308.71	193 REBAR & ALUMINUM CAP "HEA CONTROL POINT" N 24164.5720 E 48361.5547 ELEV. = 1300.09	199 REBAR & ALUMINUM CAP "HEA CONTROL POINT" N 20385.9823 E 48327.5277 ELEV. = 1300.54	207 SPINDLE N 23588.2388 E 49789.5466 ELEV. = 1308.87	
148 REBAR & ALUMINUM CAP "HEA CONTROL POINT" N 24480.0120 E 49037.5660 ELEV. = 1302.82	167 REBAR & ALUMINUM CAP "HEA CONTROL POINT" N 25128.1910 E 50735.9880 ELEV. = 1311.19	194 REBAR & ALUMINUM CAP "HEA CONTROL POINT" N 23602.0583 E 48281.6371 ELEV. = 1297.37	200 SPINDLE N 24066.0362 E 50355.2309 ELEV. = 1313.16	208 SPINDLE N 23583.4480 E 50132.6473 ELEV. = 1311.90	

LEGEND

- FOUND MONUMENT AS NOTED ON FOUND MONUMENTS TABLE - DESTROYED DURING CONSTRUCTION, REPLACED IN ORIGINAL LOCATION WITH A 5/8" X 30" REBAR & ORANGE PLASTIC CAP STAMPED "HARDEY ENG. & ASSOC."
- FOUND MONUMENT AS NOTED ON FOUND MONUMENTS TABLE - DESTROYED DURING CONSTRUCTION, REPLACED IN ORIGINAL LOCATION WITH A 5/8" X 24" REBAR & ORANGE PLASTIC CAP STAMPED "HARDEY ENG. & ASSOC."
- FOUND MONUMENT AS NOTED ON FOUND MONUMENTS TABLE - DESTROYED DURING CONSTRUCTION, REPLACED IN ORIGINAL LOCATION WITH A 5/8" X 24" REBAR & ALUM. CAP STAMPED "HARDEY ENG. & ASSOC."
- △ CONTROL POINT AS NOTED ON CONTROL POINTS TABLE - DESTROYED DURING CONSTRUCTION
- FOUND SURVEY MONUMENT (SEE S/N 20479)
- ▲ FOUND SURVEY MONUMENT AS NOTED
- RE-SET SURVEY MONUMENT (SEE S/N 20568)
- MONUMENT SEARCHED FOR BUT NOT FOUND PER S/N AS NOTED
- S/N FILED SURVEY NUMBER
- CP CONTROL POINT
- FD FOUND MONUMENT
- TL TAX LOT NUMBER
- BPC BLUE PLASTIC CAP
- OPC ORANGE PLASTIC CAP
- RPC RED PLASTIC CAP
- YPC YELLOW PLASTIC CAP

RECEIVED
Date 12-7-12
This survey consists of:
1 sheet(s) Map
2 page(s) Narrative
JACKSON COUNTY SURVEYOR

REGISTERED PROFESSIONAL LAND SURVEYOR
Richard L. Bath
OREGON
JULY 30, 1978
RICHARD L. BATH
No. 1069
RENEWS 12/31/11

Hardey Engineering & Associates, Inc.

HEA
ENGINEERING INTEGRITY

P.O. BOX 1625
MEDFORD, OREGON 97501-0124
VOICE: 541-772-6880
FAX: 541-772-9573
EMAIL: info@hea-inc.com

381-78-03.dwg; Mon-Recovery_Ave H 2010-Resets.dwg