

NW, SW & SE 1/4 SEC. 22, T. 36 S., R. 3 W., W.M.

*** RECEIVED ***
 DATE 9-8-12 BY *JB*
 This survey consists of:
 1 sheet(s) Map
 0 page(s) Narrative
 JACKSON COUNTY
 SURVEYOR

NARRATIVE

THE PURPOSE OF THIS SURVEY IS TO RECORD THE POSITIONS OF CONTROL POINTS FOR CONSTRUCTING THE KANE CREEK FISH PASSAGE PROJECT, RESOLVE THE EXISTING RIGHT OF WAY CENTER LINES, DEFINE THE EXISTING RIGHT OF WAY AND RECORD THE POSITIONS OF MONUMENTS OF RECORD, AS FOUND, AS DIRECTED IN ORS 209.155.

BEARINGS ARE BASED UPON THE OREGON COORDINATE SYSTEM NAD_83 (CORS96) (EPOCH:2002.0000), SOUTH ZONE.

THE HORIZONTAL POSITION OF THE GPS MONUMENTS WERE ESTABLISHED BY GPS OBSERVATIONS WHILE CORRECTIONS FROM THE OREGON REALTIME GPS NETWORK (ORGN) WERE BEING RECEIVED. POSITIONS WERE THEN ESTABLISHED ON THE RECOVERED MONUMENTS ACCORDING TO ODOT'S DOUBLE TIE STANDARDS.

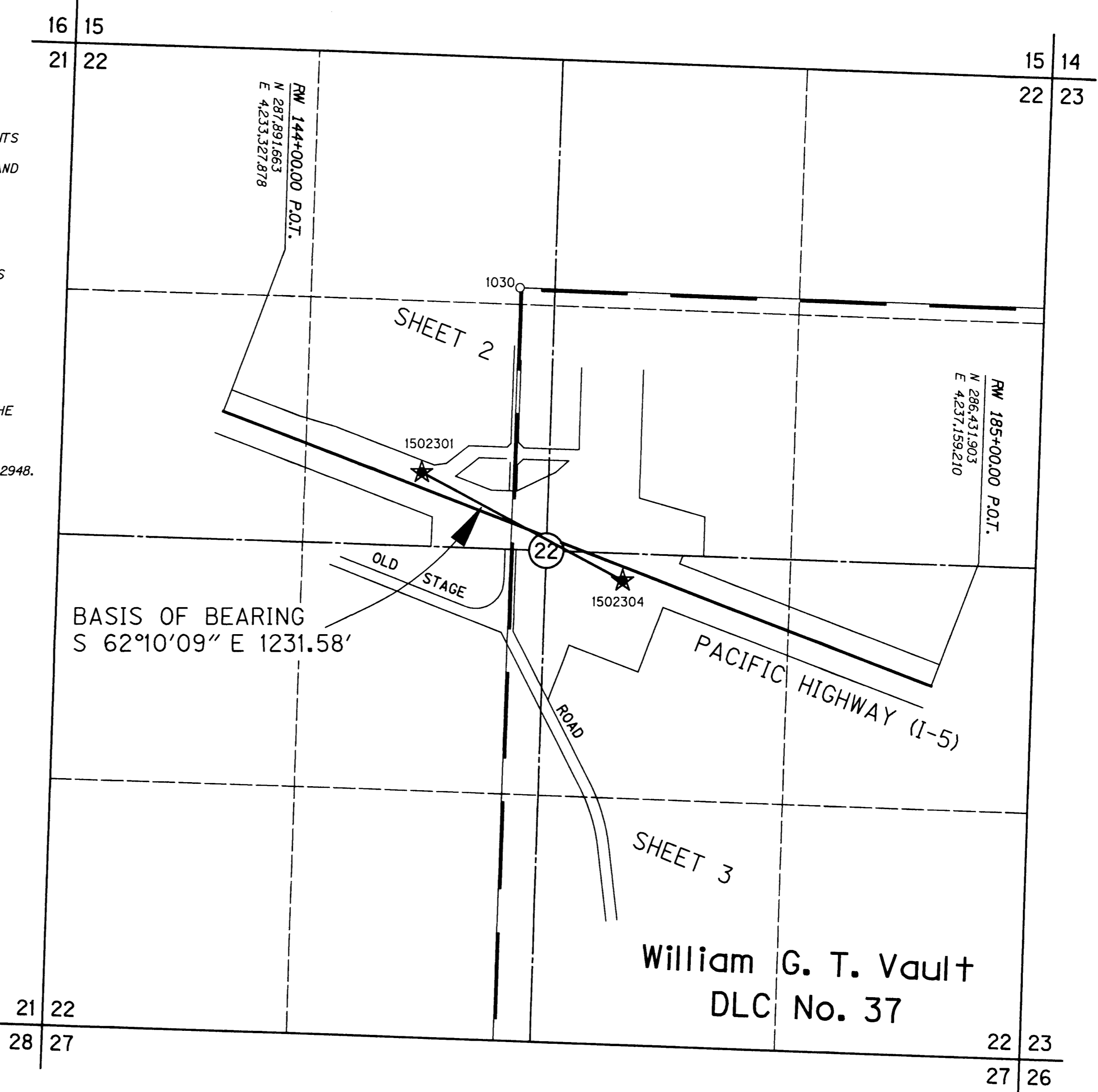
ELEVATIONS WERE ESTABLISHED BY RUNNING DIFFERENTIAL LEVELS WITH A DIGITAL LEVEL USING BENCH MARK R 7.PID N20503, NAVD 88 ELEVATION 1086.55 FEET.

THIS SURVEY UTILIZES A LOCAL DATUM PLANE (LDP) WHICH IS RELATIVE TO THE OREGON COORDINATE SYSTEM (SPC) OF NAD_83 (CORS96) (EPOCH:2002.0000), SOUTH ZONE, WITH RESPECT TO THE LOCAL LATITUDE AND GROUND ELEVATION. THE LDP COORDINATES DEFINE TRUE GROUND DISTANCES. TO CONVERT THE LDP COORDINATES TO SPC COORDINATES, MULTIPLY THE LDP COORDINATES BY 0.99992948.

THE K ALIGNMENT WAS ESTABLISHED AS PER ODOT DRAWING (MAP) 7B-8-8. THE K ALIGNMENT WAS THEN EXTENDED TO IT'S INTERSECTION WITH THE S ALIGNMENT (OLD STAGE ROAD). A CURVE WAS THEN FITTED TO MATCH THE SPLIT OF THE STRIPING. STATIONING WAS ESTABLISHED AS 10+00.00 AT THE K AND RW EQUATION.

THE S ALIGNMENT (OLD STAGE ROAD) TANGENTS WERE ESTABLISHED BY THE SPLIT OF MONUMENTS 1027 AND 1038 AND MONUMENT 1019 AND THE SPLIT OF MONUMENTS 1003 AND 1004 AND MONUMENT 1016. THE TANGENTS WERE THEN EXTENDED TO THEIR INTERSECTION, CREATING THE POINT OF INTERSECTION (P.I.). THE CURVE WAS DEFINED BY HOLDING MONUMENT 1016 AS THE POINT OF TANGENCY (P.T.). STATIONING WAS ASSUMED.

THE RW (I-5) ALIGNMENT WAS ESTABLISHED BY THE SPLIT OF MONUMENTS 1000 AND 1044 AND MONUMENT 1043. STATION 170+00 WAS HELD AT THE SPLIT OF MONUMENTS 1000 AND 1044 AS PER MAP 7B-8-8.



BASIS OF BEARING
 S 62°10'09" E 1231.58'

William G. T. Vault
 DLC No. 37

- LEGEND**
- FOUND MONUMENT AS DESCRIBED IN MONUMENT TABLE
 - ★ GPS MONUMENT - SET 5/8" X 30" IR WITH ALUMINUM "ODOT CONTROL (w/ POINT NUMBER)" CAP
- SEE PAGE 3 FOR MONUMENT DATA

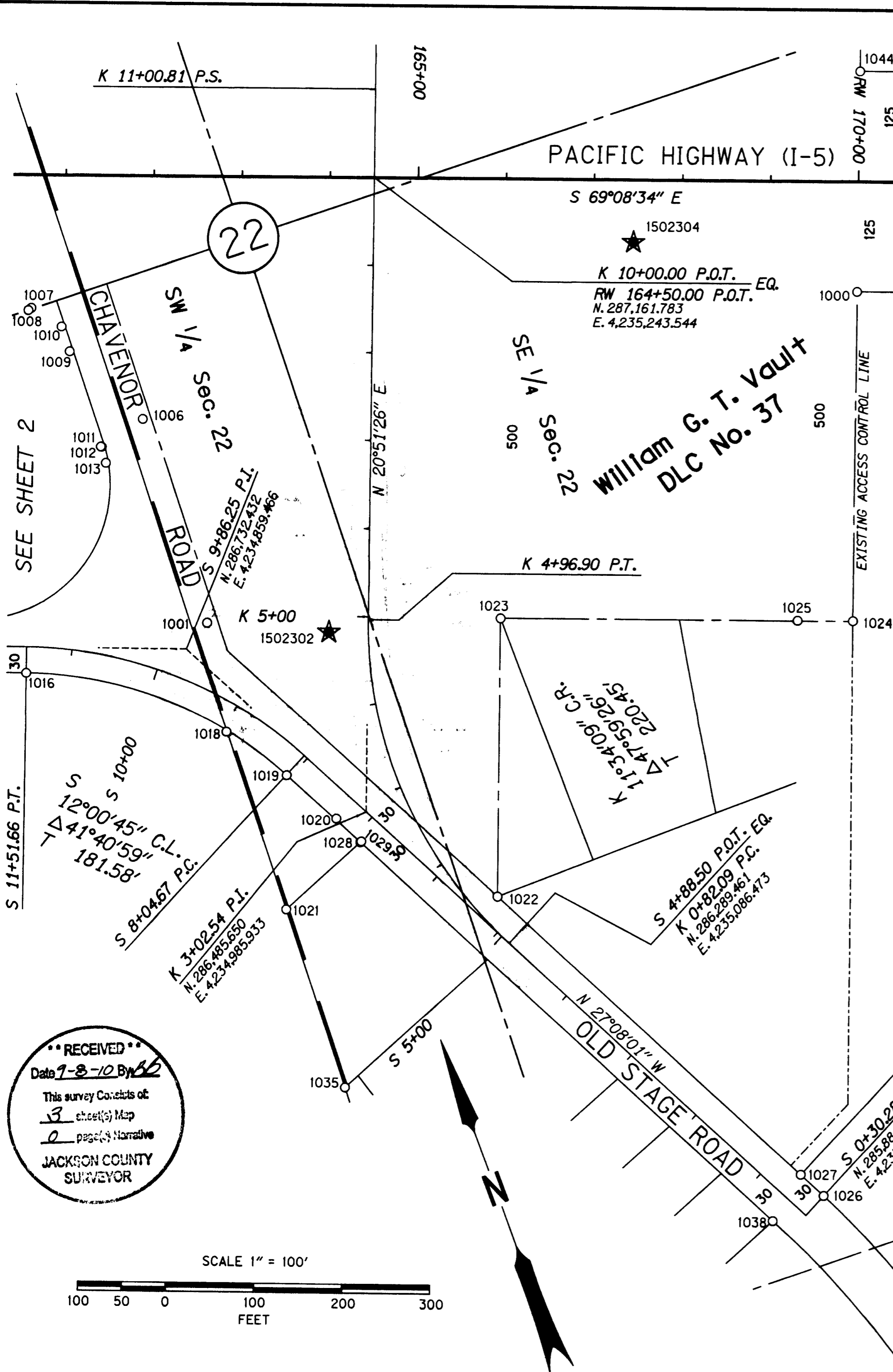
REGISTERED PROFESSIONAL LAND SURVEYOR
Jody S. Frasier
 OREGON
 JULY 25, 1991
 JODY S. FRASIER
 2498
 RENEWS 12/31/2011

OREGON DEPARTMENT OF TRANSPORTATION
 HORIZONTAL CONTROL, RECOVERY AND RETRACEMENT MAP
 KANE CREEK FISH PASSAGE
 PACIFIC HIGHWAY (I-5)
 JACKSON COUNTY
 CADD FILE 15023rw.dgn

REGION 3 TECHNICAL CENTER
 100 ANTELOPE ROAD
 WHITE CITY, OR 97503

AUGUST 16, 2010
 SCALE: 1" = 100'
 SHEET 1 OF 3

SW & SE 1/4 SECTION 22, T. 36 S., R. 3 W., W.M.



GPS MONUMENT TABLE

POINT	DATE	N. LATITUDE	W. LONGITUDE	SPC NORTH	SPC EAST	UDP NORTH	UDP EAST	ELEV.
1502301	2/3/2010	42°25'31.18008"	123°02'43.82301"	287545.2891	4234106.198	287565.568	4234404.808	1081.91
1502302	2/3/2010	42°25'28.76041"	123°02'35.30391"	286673.941	4234718.932	286694.159	4235017.585	1103.73
1502303	2/3/2010	42°25'30.14213"	123°02'40.17043"	286824.834	4234358.361	286845.062	4234656.989	1098.67
1502304	2/3/2010	42°25'31.82989"	123°02'29.07588"	286970.348	4235195.246	286990.587	4235493.933	1102.89

FOUND MONUMENT TABLE

POINT/STATION	OFFSET	UDP NORTH	UDP EAST	DATE	DESCRIPTION	CS
1000 RW 169+99.96 (170+00)	125.03 (125)	286849.14	4235712.95	2/17/2010	FD 3/4" IR	MAP 7B-8-8
1001		286752.16	4234891.68	2/16/2010	FD 5/8" IR w/ YPC "L.J. FRIAR & ASSOC"	20220
1002 S 12+12.76	29.98 (30)	286848.08	4234644.02	2/12/2010	FD 3/4" IP w/ LEAD & TACK, BENT WESTERLY	1652
1003 S 19+40.72	29.99 (30)	287111.14	4233965.26	2/18/2010	FD 3/4" IP w/ LEAD & TACK	1652
1004 S 19+40.66	29.99 (30)	287055.21	4233943.57	2/12/2010	FD 5/8" IR w/ YPC "FARBER LS 2189"	12344
1005		287187.11	4233834.20	2/18/2010	FD 3/4" IP w/ LEAD & TACK	1652
1006		286994.73	4234902.56	2/16/2010	FD 5/8" IR w/ YPC "L.J. FRIAR & ASSOC"	20220
1007		287158.23	4234827.42	2/16/2010	FD 5/8" IR w/ YPC "L.J. FRIAR & ASSOC"	20220
1008		287157.01	4234823.37	2/12/2010	FD 5/8" IR w/ YPC "L.J. FRIAR & ASSOC"	20220
1009		287096.05	4234851.15	2/16/2010	FD 5/8" IR w/ YPC "WIEGAND PLS 1445"	10534
1010		287126.05	4234852.19	2/16/2010	FD 3/4" IP w/ LEAD & TACK	1652
1011		286981.12	4234847.86	2/16/2010	FD 1/2" IP	FD IN 10534
1012		286981.64	4234847.04	2/16/2010	FD 5/8" IR w/ YPC "WIEGAND PLS 1445"	10534
1013		286962.14	4234846.01	2/16/2010	FD 5/8" IR	10534
1014		286970.22	4234636.47	2/16/2010	FD 5/8" IR w/ YPC "WIEGAND PLS 1445"	10534
1015		286969.24	4234637.34	2/16/2010	FD 1/2" IP	ORIGIN UNKNOWN
1016 S 11+51.67	30.00 (30)	286770.07	4234679.32	2/12/2010	FD 5/8" IR	598
1017 S 12+63.04	30.12 (30)	286810.20	4234575.42	2/12/2010	FD 1" IP	598
1018 S 8+94.75	31.73 (30)	286627.15	4234858.87	2/16/2010	FD 5/8" IR w/ YPC "LS 2271"	12673
1019 S 8+04.23	30.00 (30)	286556.77	4234915.78	2/16/2010	FD 5/8" IR	12673
1020 S 7+28.83	28.71 (30)	286490.25	4234951.31	2/16/2010	FD 3/4" IP	1083
1021		286413.53	4234862.38	2/16/2010	FD 5/8" IR w/ YPC "LS 2271"	12673
1022 RW 166+00.08 (166+00)	818.51	286343.48	4235092.37	2/24/2010	FD 3/4" IP	1083
1022 S 5+33.88	29.88 (30)					
1023 RW 166+00.14 (166+00)	500.12 (500)	286640.98	4235205.79	2/18/2010	FD 3/4" IR	MAP 7B-8-8
1024 RW 170+00.29 (170+00)	499.54 (500)	286499.06	4235579.92	2/23/2010	FD 3/4" IR	MAP 7B-8-8
1025 RW 169+37.03	499.60	286521.52	4235520.78	2/23/2010	FD 5/8" IR	6528
1026 S 0+30.28	29.96 (30)	285895.34	4235322.11	2/18/2010	FD 5/8" IR, BENT SOUTHERLY	6491
1027 S 0+65.93	29.99 (30)	285927.07	4235305.88	2/18/2010	FD 5/8" IR	6491
1028 S 6+90.39	30.02 (30)	286455.44	4234967.68	2/24/2010	FD 5/8" IR	12673
1029 S 6+90.28	28.85 (30)	286455.88	4234968.78	2/24/2010	FD 3/4" IP	ORIGIN UNKNOWN
1030		288563.97	4234933.93	2/19/2010	FD 2-1/2" BRASS DISK, NW COR DLC 37	J.C.S. RE-ESTAB
1031 RW 155+78.86 (155+80)	139.87 (140)	287602.64	4234479.29	2/12/2010	FD 5/8" IR	MAP 7B-8-8
1032		287778.76	4234887.89	2/19/2010	FD 5/8" IR	2158
1033		288003.29	4234747.65	2/19/2010	FD 3/4" IR	FD IN 9019
1035		286200.56	4234855.36	2/24/2010	FD 1" IP	598
1036 RW 150+40.37	140.57	287795.03	4233976.33	2/19/2010	FD 5/8" IR w/ 1" AC "PLS 1071"	10113
1037		287791.00	4234488.07	2/19/2010	FD 1" IP	2158
1038 S 0+53.41	29.99 (30)	285888.58	4235258.21	2/24/2010	FD 1/2" IR	1083
1039		287640.25	4234948.21	2/12/2010	FD 5/8" IR	MAP 7B-8-8
1040 RW 159+07.81	125.03 (125)	287471.66	4234781.40	2/12/2010	FD 5/8" SQUARE IR	MAP 7B-8-8
1041 RW 153+99.16 (154+00)	139.78 (140)	287666.54	4234311.33	2/12/2010	FD 5/8" IR	MAP 7B-8-8
1042		287998.79	4234895.55	2/19/2010	FD 3/4" IP	ORIGIN UNKNOWN
1043 RW 149+99.06 (150+00)	140.00 (140)	287809.20	4233937.53	5/12/2010	FD 5/8" IR	MAP 7B-8-8
1044 RW 170+00.04 (170+00)	125.03 (125)	287082.78	4235802.06	5/12/2010	FD 3/4" IP	MAP 7B-8-8
1050		288011.19	4234487.82	2/19/2010	FD 5/8" IR	FD IN 9019

- LEGEND**
- FOUND MONUMENT AS DESCRIBED IN MONUMENT TABLE
 - ★ GPS MONUMENT - SET 5/8" X 30" IR WITH ALUMINUM "ODOT CONTROL (w/ POINT NUMBER)" CAP
 - AC ALUMINUM CAP
 - C.S. COUNTY SURVEYOR RECORDING NUMBER
 - FD FOUND
 - IP IRON PIPE
 - IR IRON ROD
 - w/ WITH
 - YPC YELLOW PLASTIC CAP
 - () RECORD DATA
 - M/DD/YYYY DENOTES DATE FOUND OR SET
- SEE PAGE 3 FOR MONUMENT DATA

REGISTERED PROFESSIONAL LAND SURVEYOR

 JUL 25, 1991
 JODY S. FRASIER
 2498
 RENEWS 12/31/2011

OREGON DEPARTMENT OF TRANSPORTATION
 HORIZONTAL CONTROL, RECOVERY AND RETRACEMENT MAP
 KANE CREEK FISH PASSAGE
 PACIFIC HIGHWAY (I-5)
 JACKSON COUNTY
 CADD FILE 15023rw.dgn
 REGION 3 TECHNICAL CENTER
 100 ANTELOPE ROAD
 WHITE CITY, OR 97503
 AUGUST 16, 2010
 SCALE: 1" = 100'
 SHEET 3 OF 3

NW & SW 1/4 SECTION 22, T. 36 S., R. 3 W., W.M.

RW 144+00.00 P.O.T.
N. 287.891663
E. 4.233327878

RW 145+00

125

125

RW 150+00
141

RW 155+00

125

RW 160+00

125

PACIFIC HIGHWAY (I-5)
S 69°08'34" E

EXISTING ACCESS CONTROL LINE

S 19+40.72 P.C.
N. 287.083.174
E. 4.233.954.418

NW 1/4 Sec. 22
SW 1/4 Sec. 22

1005
1003
1004

N 68°49'00" W

OLD STAGE ROAD

1014 1015

1002
1502303

1017

1016

CHAVENOR ROAD
1007
1008
1010
1009
1011
1012
1013

S 9+86.25 P.I.
N. 286.732.432
E. 4.234.859.466

K 5+00
1502302

SEE SHEET 3

K 16+13.26 P.C.S.

K 15+00

K 13+00.81 P.S.C.

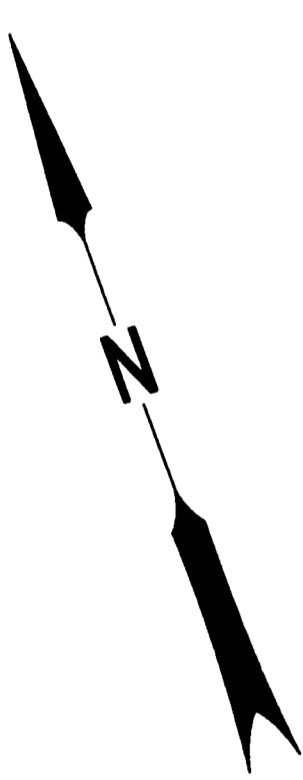
William G. T. Vault
DLC No. 37

K 11+00.81 P.S.

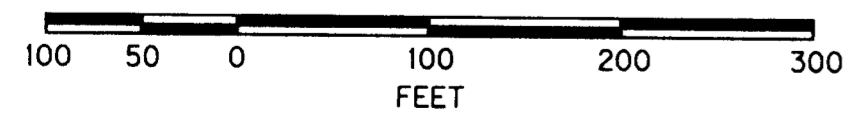
22

SEE SHEET 3

N 20°51'26" E



SCALE 1" = 100'



RECEIVED
Date 9-8-10 By *JS*
This survey consists of:
3 digital maps
2 paper narratives
JACKSON COUNTY
SURVEYOR

LEGEND

- FOUND MONUMENT AS DESCRIBED IN MONUMENT TABLE
 - ★ GPS MONUMENT - SET 5/8" X 30" IR WITH ALUMINUM "ODOT CONTROL (w/ POINT NUMBER)" CAP
- SEE PAGE 3 FOR MONUMENT DATA

REGISTERED PROFESSIONAL LAND SURVEYOR

Jody S. Frasier
JUL 25, 1991
JODY S. FRASIER
2498
RENEWS 12/31/2011

OREGON DEPARTMENT OF TRANSPORTATION
HORIZONTAL CONTROL, RECOVERY AND RETRACEMENT MAP
KANE CREEK FISH PASSAGE
PACIFIC HIGHWAY (I-5)
JACKSON COUNTY
CADD FILE 15023rw.dgn

REGION 3 TECHNICAL CENTER
100 ANTELOPE ROAD
WHITE CITY, OR 97503

AUGUST 16, 2010
SCALE: 1" = 100'
SHEET 2 OF 3