

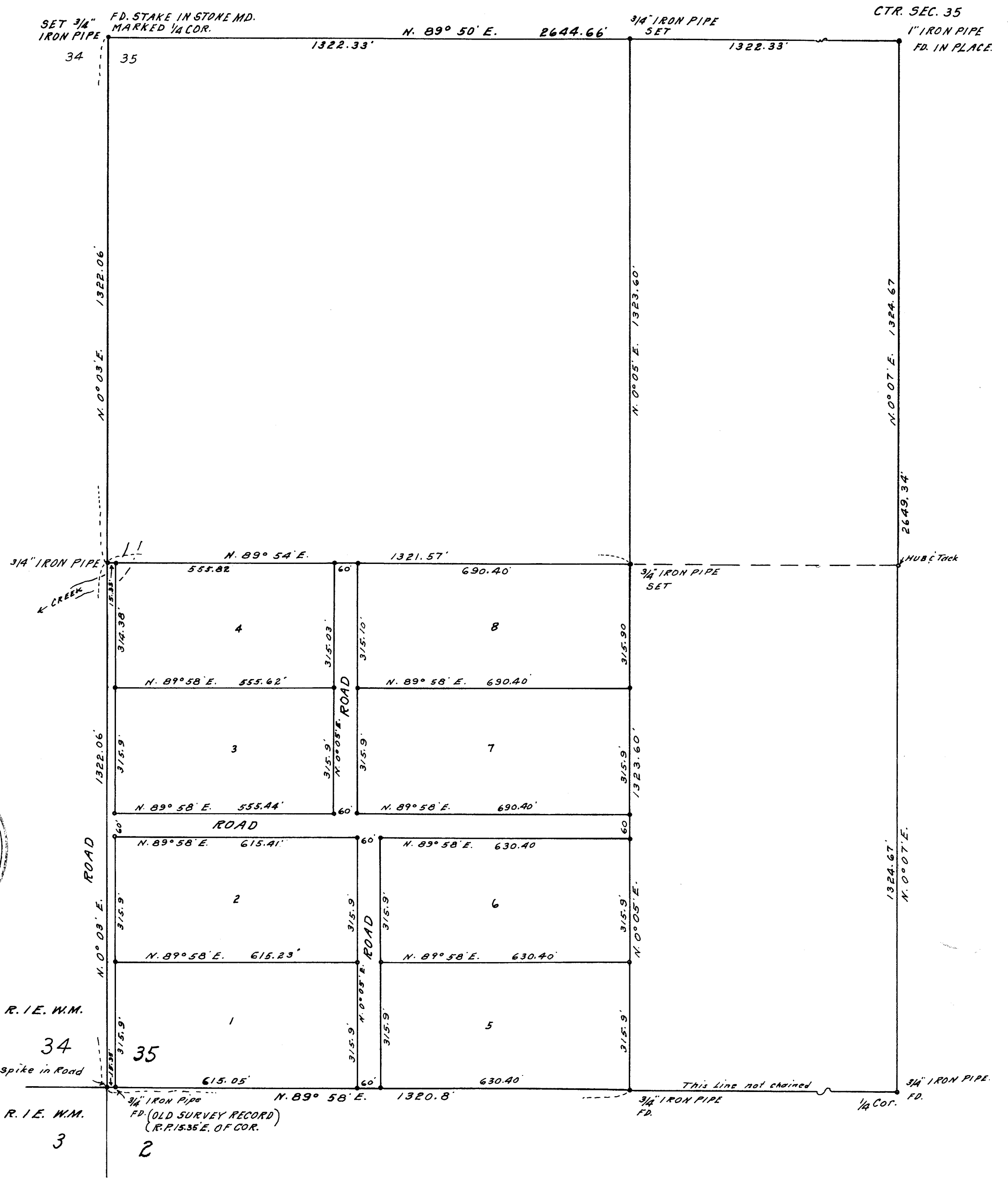
MAP
 SURVEY FOR
 M.E. NICHOLS, 1550 NEVADA ST.
 ASHLAND, OREGON.
 DATE: JULY, 1960 SCALE: 1"=200'
 SOLAR BEARINGS
 LOCATED
 SW 1/4 OF SW 1/4, SEC. 35, T. 38S. R. 1E. W.M.,
 JACKSON COUNTY, OREGON.



REGISTERED
 OREGON
 LAND SURVEYOR
L. E. Jager
 L. E. JAGER
 1944

RECEIVED
 JACKSON
 JAN 9 1962
 COUNTY
 SURVEYOR

T. 38S. R. 1E. W.M.
 34
 spike in Road
 T. 39S. R. 1E. W.M.
 3



Survey narrative to comply with ORS 209.250

For: M. E. Nichols, 1550 Nevada Street, Ashland, Oregon

Purpose: Subdivision of land

Procedure: The outer boundaries of the Southwest Quarter of Section 35 had been previously surveyed and corners set and marked. These corners are shown on my map as found FD. and the type and size of the monuments found are as shown. The previous survey made by Clabby. A 3/4" iron pipe was set for the Section corner common to Sections 34, 35, 2 and 3 and witnessed as follows: A 3/4 inch iron pipe on fence line bears 15.35 feet East of the Section corner. The face of blaze on a 12" Oak bears S. 37° E. 18.75 feet. Tree scribed S. 2 B.T. The face of blaze on a 12" Oak bears S. 54° 30' W. 30.40 feet. Tree scribed S 3 B.T. The road had been cut deeper and the Sec. corner pipe had been destroyed and resetting a pipe in hardpan surface was impossible without drilling a hole for it. Old rotted line stakes found along the North line of the Quarter Section. From these old corner monuments found as indicated on map I subdivided the S.W. Quarter and the S.W. 1/4 of the S.W. 1/4 into tracts and roads according to the bearings and distances shown on the accompanying map. I replaced the stake at the West 1/4 corner with a 3/4" iron pipe. Iron pipes set at all tract corners. West end of tracts the pipes are set on approx. old fence line.

