

**MAP OF SURVEY
FOR
HORIZONTAL CONTROL
AND
MONUMENT RECOVERY
11TH AVENUE, AVENUE H, AVE F,
13TH, 14TH & 15TH STREETS
SITUATED IN
SECTION'S 17, 18 & 19, T36S, R1W, WM
JACKSON COUNTY, OREGON**

NARRATIVE

SURVEY FOR: URBAN RENEWAL AGENCY of JACKSON COUNTY
10 SOUTH OAKDALE, ROOM #214
MEDFORD, OR 97501

PURPOSE: TO LOCATE EXISTING MONUMENTATION WHICH MAY BE
DISTURBED OR DESTROYED DURING IMPROVEMENTS ON
PORTIONS OF 11TH STREET, AVENUE H, AGATE ROAD,
AVE G, AVE F AND 13TH-15TH STREETS, AND REPLACEMENT
OF ANY MONUMENTS THUS DESTROYED.

PROCEDURE: USING CONTROL PREVIOUSLY ESTABLISHED FOR S/N 20479
A CLOSED TRAVERSE WAS RUN TYING ALL FOUND PROPERTY
CORNER MONUMENTS AND STREET MONUMENTS OF RECORD
INTO OUR CONTROL NET. OUR PRIMARY CONTROL POINTS
FOR THIS AREA ARE SHOWN ON THIS MAP.

BASIS OF BEARINGS: AGATE SUBDIVISION EXT. NO. 2
COORDINATES ARE ASSUMED

DATE: FEBRUARY, 2010

FOUND MONUMENTS

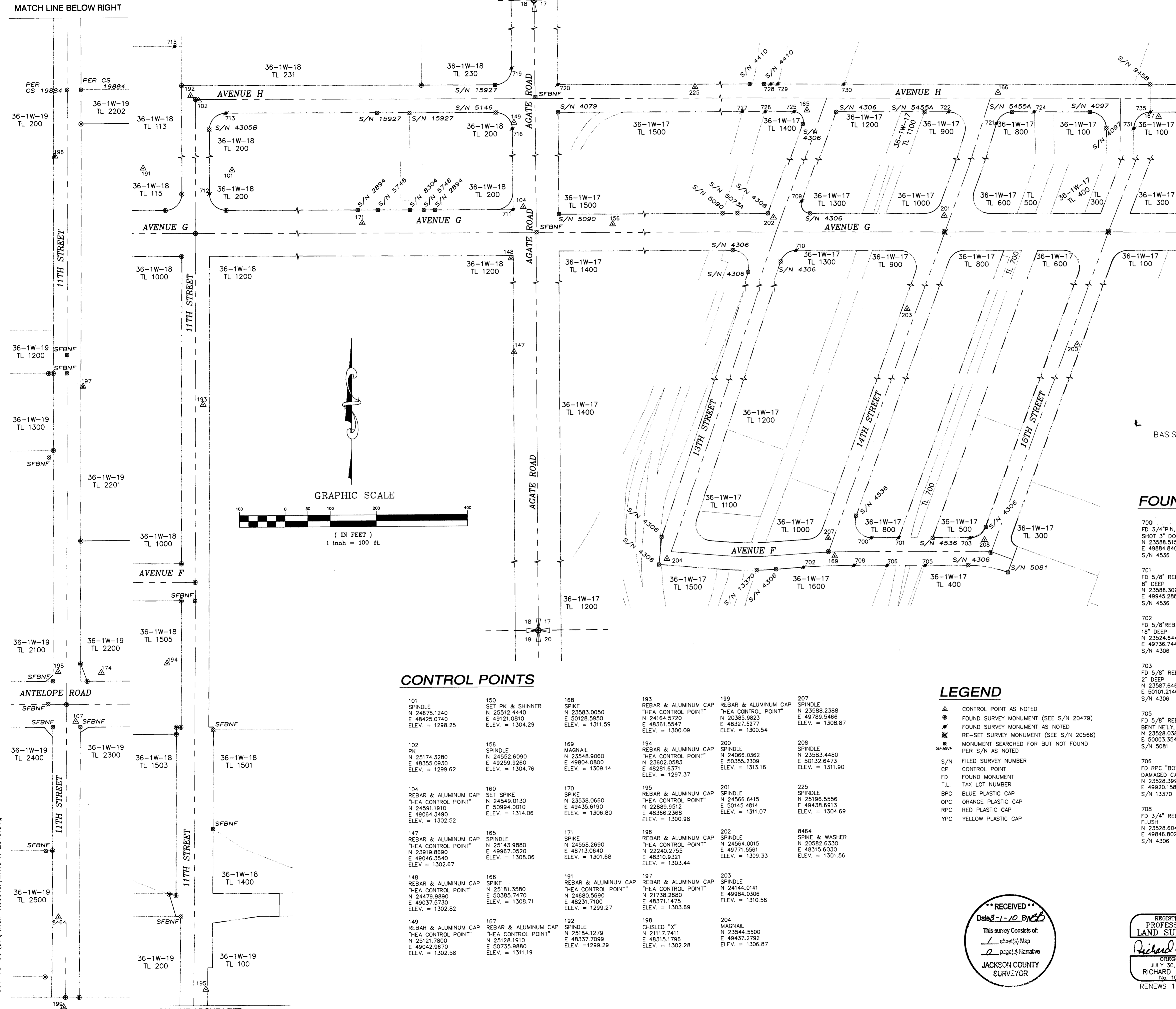
700 FD 3/4" PIN, BENT SHOT 3" DOWN N 23588.5150 E 49884.8400 S/N 4536	709 FD 3/4" SMOOTH PIN, BENT & SPINNING, SHOT 6" DOWN N 24599.4630 E 49833.2590 S/N 4306	716 FD 5/8" REBAR IN CCT 2" DEEP N 25108.1650 E 49039.3850 S/N 5146	725 FD 3/4" SMOOTH PIN N 25140.7140 E 49939.0270 S/N 4306
701 FD 5/8" REBAR 8" DEEP N 23588.3097 E 49945.2881 S/N 4536	710 FD 1 1/2" ALUM. CAP "BOYDEN PLS 261", 4" DOWN N 24492.6120 E 49820.7730 S/N 4306	717 FD OPC "HARDEY ENG. & ASSOC.", 4" DEEP N 25204.6220 E 48841.0910 S/N 15927	726 FD 5/8" SMOOTH PIN, 6" DEEP BENT, SHOT 8" DOWN N 25140.8130 E 49876.1950 S/N 5073A
702 FD 5/8" REBAR 18" DEEP N 23524.6440 E 49736.7440 S/N 4306	711 FD 3/4" REBAR 2" DEEP N 24585.3430 E 49042.1080 S/N 8304	719 FD TAG-TACK, "LS 1069" IN CCT CURB N 25240.2283 E 49038.6892 S/N 15927	727 FD 5/8" SMOOTH PIN, BENT & SPINNING, FLUSH, SHOT 8" DOWN N 25141.2360 E 49825.5270 S/N 5090
703 FD 5/8" REBAR 2" DEEP N 23587.6460 E 50101.2140 S/N 4306	712 FD 5/8" SMOOTH PIN, BENT & SPINNING, SHOT 8" DOWN N 24623.7570 E 48376.3040 S/N 4305B	720 FD 3/4" SMOOTH PIN N 25203.5060 E 49138.8590 S/N 4097	728 FD YPC "KAISER RLS 803" SET IN CCT N 25200.9885 E 49888.7640 S/N 9458
705 FD 5/8" REBAR, BENT N'LY, 8" DEEP N 23528.0380 E 48414.2370 S/N 5081	713 FD 5/8" SMOOTH PIN, FLUSH LEANS N'LY, SHOT TOP N 25146.0280 E 48414.2370 S/N 46305B	721 FD 3/4" REBAR N 25114.1600 E 50382.3910 S/N 5455A	729 FD YPC "KAISER RLS 803" SET IN CCT N 25200.9270 E 49803.9260 S/N 9458
706 FD RPC "BOYDEN PLS 261" DAMAGED CAP, 6" DEEP N 23528.5990 E 50278.2510 S/N 13370	714 FD OPC "HARDEY ENG. & ASSOC.", FLUSH N 24539.8740 E 48317.3980 S/N 20271	722 FD 3/4" SMOOTH PIN LEANS S'LY, RAISED 2" N 25139.5610 E 50278.2510 S/N 5455A	730 FD 5/8" W/YPC REMNANTS SET IN CCT N 25200.4300 E 50048.5630 S/N 9458
708 FD 3/4" REBAR FLUSH N 23528.6040 E 48305.8020 S/N 4306	715 FD OPC, "HARDEY ENG. & ASSOC.", FLUSH N 25102.1910 E 49846.6150 S/N 20271	724 FD 5/8" W/YPC REMNANTS SHOT WITH OFFSET N 25138.8290E E 50464.8520E S/N 9458	731 FD 5/8" REBAR 2" DEEP N 25102.1910 E 50681.7490 S/N 4097
			735 FD YPC "KAISER RLS 803" SET IN CCT N 25138.1303 E 50717.8344 S/N 9458

LEGEND

- △ CONTROL POINT AS NOTED
- FOUND SURVEY MONUMENT (SEE S/N 20479)
- FOUND SURVEY MONUMENT AS NOTED
- ⊗ RE-SET SURVEY MONUMENT (SEE S/N 20568)
- ⊠ MONUMENT SEARCHED FOR BUT NOT FOUND
- PER S/N AS NOTED
- S/N FILED SURVEY NUMBER
- CP CONTROL POINT
- FD FOUND MONUMENT
- T.L. TAX LOT NUMBER
- BPC BLUE PLASTIC CAP
- OPC ORANGE PLASTIC CAP
- RPC RED PLASTIC CAP
- YPC YELLOW PLASTIC CAP

CONTROL POINTS

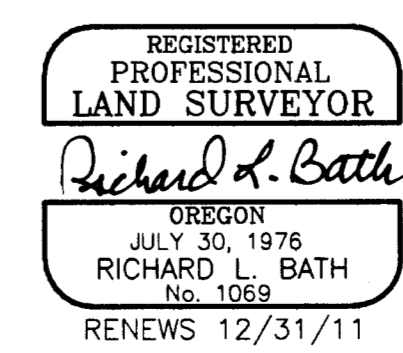
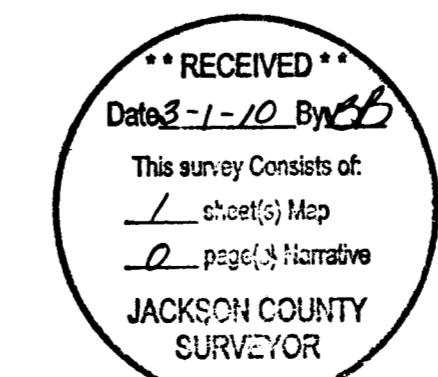
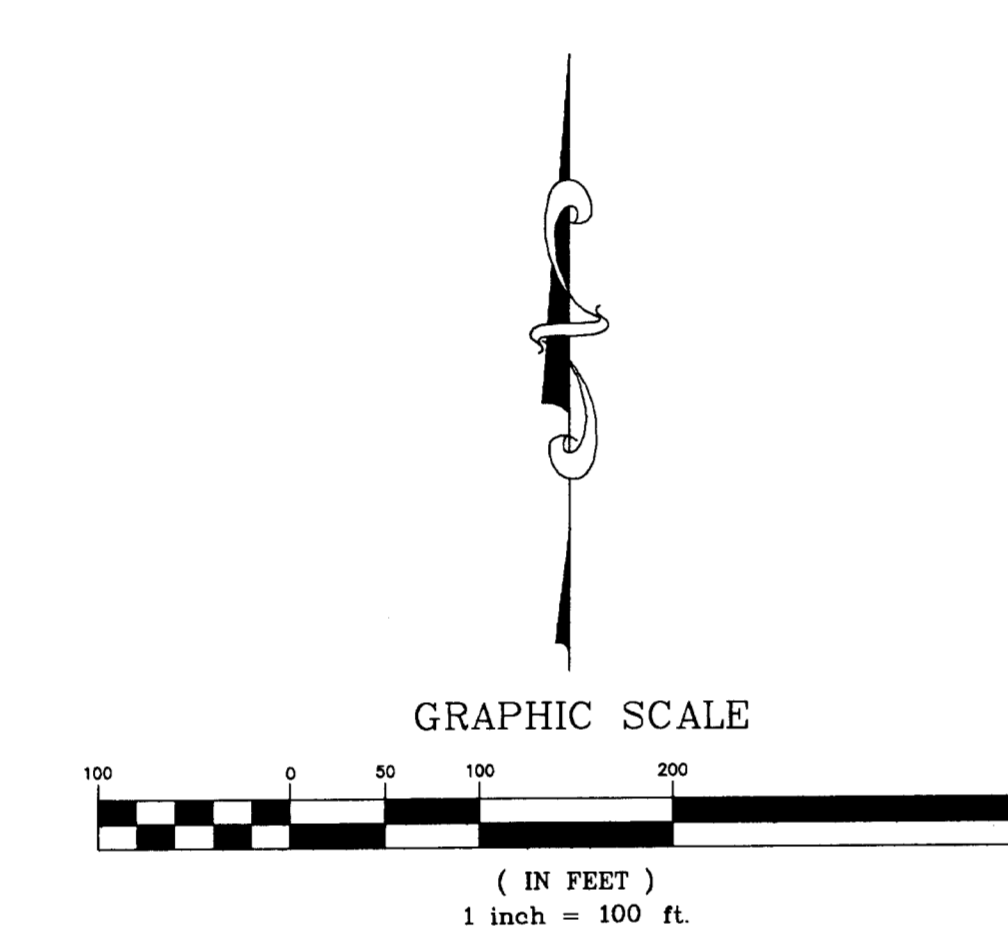
101 SPINDLE N 24875.1240 E 48425.0740 ELEV. = 1298.25	150 SET PK & SHINNER N 25512.4440 E 49121.0810 ELEV. = 1304.29	168 SPIKE N 23583.0050 E 50128.5950 ELEV. = 1311.59	193 REBAR & ALUMINUM CAP "HEA CONTROL POINT" N 24164.5720 E 48361.5547 ELEV. = 1300.09	198 REBAR & ALUMINUM CAP "HEA CONTROL POINT" N 20385.9823 E 48327.5277 ELEV. = 1300.54	207 SPINDLE N 23588.2388 E 49789.5466 ELEV. = 1308.87
102 PK N 25174.3280 E 48355.0930 ELEV. = 1299.62	156 SPINDLE N 24552.6090 E 49259.9260 ELEV. = 1304.76	169 MAGNAIL N 23549.9060 E 49804.0800 ELEV. = 1309.14	194 REBAR & ALUMINUM CAP "HEA CONTROL POINT" N 23602.0583 E 48281.6371 ELEV. = 1297.37	200 SPINDLE N 24066.0362 E 50355.2109 ELEV. = 1313.16	208 SPINDLE N 23583.4480 E 50132.6473 ELEV. = 1311.90
104 REBAR & ALUMINUM CAP "HEA CONTROL POINT" N 24591.1910 E 49064.3490 ELEV. = 1302.52	160 SET SPIKE N 24549.0130 E 50994.0010 ELEV. = 1314.06	170 SPIKE N 23538.0660 E 49135.6190 ELEV. = 1306.80	195 REBAR & ALUMINUM CAP "HEA CONTROL POINT" N 22889.9512 E 48366.2368 ELEV. = 1300.98	201 SPINDLE N 24566.6415 E 50145.4814 ELEV. = 1311.07	225 SPINDLE N 25196.5556 E 49438.6913 ELEV. = 1304.69
147 REBAR & ALUMINUM CAP "HEA CONTROL POINT" N 23919.8690 E 49046.3540 ELEV. = 1302.67	165 SPINDLE N 25143.9880 E 49967.0520 ELEV. = 1308.06	171 SPIKE N 24558.2690 E 48713.0640 ELEV. = 1301.68	196 REBAR & ALUMINUM CAP "HEA CONTROL POINT" N 22240.2755 E 48310.6321 ELEV. = 1303.44	202 SPINDLE N 24564.0015 E 49771.5581 ELEV. = 1309.33	8464 SPIKE & WASHER N 20582.6330 E 48316.6030 ELEV. = 1301.56
148 REBAR & ALUMINUM CAP "HEA CONTROL POINT" N 24479.9890 E 49037.5730 ELEV. = 1302.82	166 SPIKE N 25181.3580 E 50385.7470 ELEV. = 1308.71	191 REBAR & ALUMINUM CAP "HEA CONTROL POINT" N 24680.5690 E 48231.7100 ELEV. = 1299.27	197 REBAR & ALUMINUM CAP "HEA CONTROL POINT" N 21738.2680 E 48371.1475 ELEV. = 1303.69	203 SPINDLE N 24144.0141 E 49984.0306 ELEV. = 1310.56	
149 REBAR & ALUMINUM CAP "HEA CONTROL POINT" N 25121.7800 E 49042.9670 ELEV. = 1302.58	167 REBAR & ALUMINUM CAP "HEA CONTROL POINT" N 25128.1910 E 50735.9880 ELEV. = 1311.19	192 SPINDLE N 25184.1279 E 48337.7099 ELEV. = 1299.29	198 CHISELED "X" N 21117.7411 E 48315.1796 ELEV. = 1302.28	204 MAGNAIL N 23544.5500 E 49437.2792 ELEV. = 1306.87	



MATCH LINE BELOW RIGHT

MATCH LINE ABOVE LEFT

361-78-09.dwg Mon-Recovery_Ave H 2010.dwg



Hardey Engineering & Associates, Inc.

HEA

ENGINEERING INTEGRITY

P.O. BOX 1625
MEDFORD, OREGON 97501-0124
VOICE: 541-772-6880
FAX: 541-772-9573
EMAIL: info@hea-inc.com