

MAP OF SURVEY

LOCATED IN:
GRAEAGLE ESTATES
IN THE SE 1/4 OF SECTION 22, T.37S., R.1W., W.M.
IN THE CITY OF MEDFORD, JACKSON COUNTY, OREGON

SURVEY FOR:
PIERRE LA PIERRE AND B.P.Q., LLC
2809 DEAD INDIAN 375 LITHIA WAY
MEMORIAL ROAD ASHLAND, OR. 97520

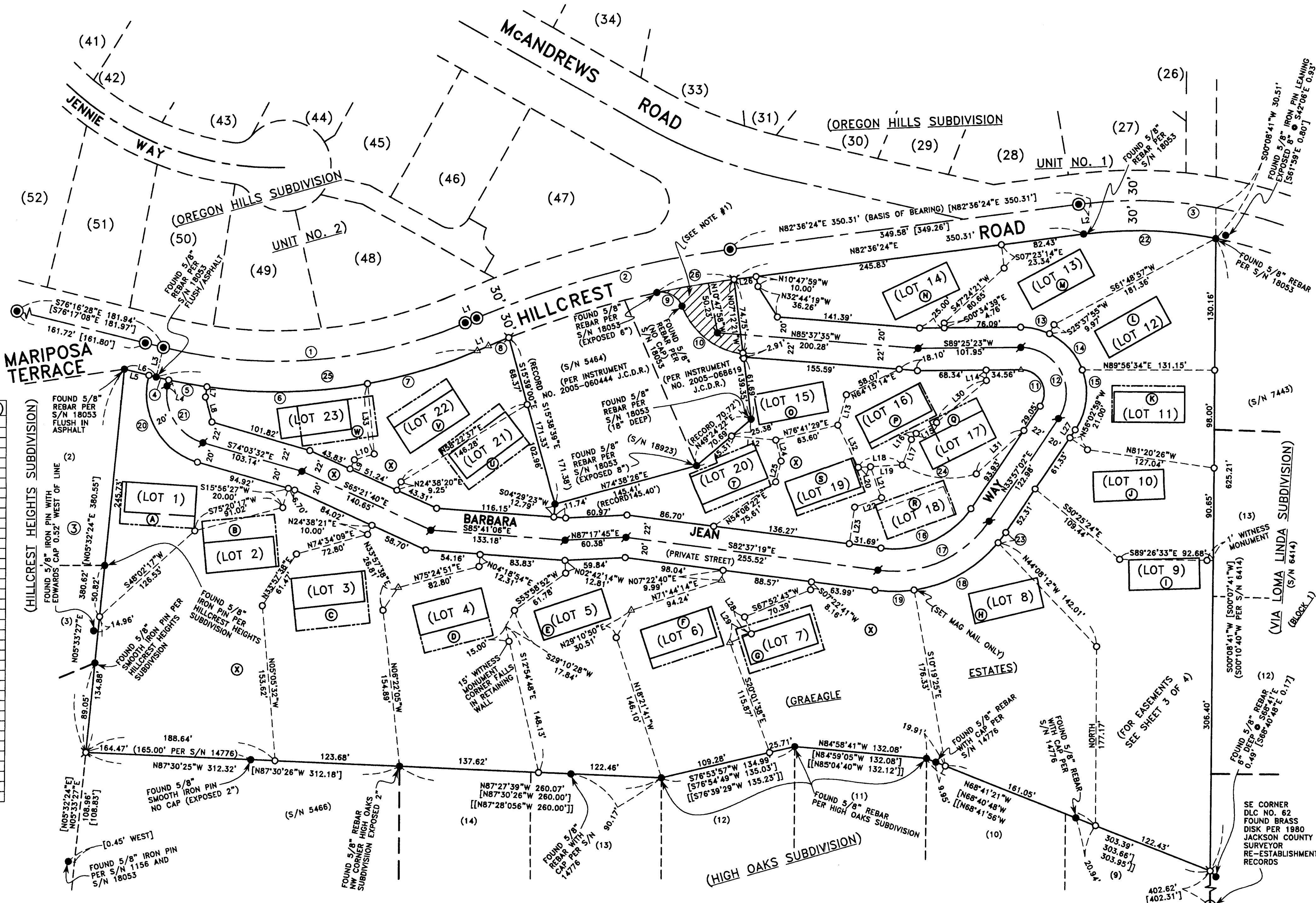
HOFFBUHR & ASSOCIATES, INC.
880 GOLF VIEW DRIVE, SUITE 201
MEDFORD, OREGON 97504
(541) 779-4641

BY: DOUGLAS C. McMAHAN PLS No. 1913
SCALE: 1" = 60' DATE: JANUARY 14, 2010
BASIS OF BEARING: FILED SURVEY NO. 18053
& HILLCREST ROAD

- = SET 5/8"x24" REBAR WITH PLASTIC CAP STAMPED "HOFFBUHR AND ASSOC., INC."
- ⊗ = SET 5/8"x30" REBAR WITH PLASTIC CAP STAMPED "HOFFBUHR AND ASSOC., INC."
- ⊙ = SET 5/8"x30" REBAR WITH METAL CAP STAMPED "HOFFBUHR AND ASSOC., INC."
- △ = SET LEAD PLUG AND TACK WITH BRASS WASHER STAMPED "LS1913"
- = FOUND MONUMENT AS NOTED
- = FOUND 5/8" REBAR WITH ORANGE CAP STAMPED "HARDEY ENG. & ASSOC." PER S/N 18053
- ⊙ = FOUND BRASS DISK MONUMENT AS SHOWN PER S/N 18053

S/N = FILED SURVEY NUMBER
[] = PER PLAT OF GRAEAGLE ESTATES (S/N 18053)
[[]] = PER PLAT OF HIGH OAKS SUBDIVISION
J.C.D.R. = JACKSON COUNTY DEED RECORDS OR OFFICIAL DEED RECORDS

- NOTES:
- 1.) PRIVATE STREET EASEMENT (BARBARA JEAN WAY) AS CREATED PER PLAT OF GRAEAGLE ESTATES.
 - 2.) FOR LOCATION OF LOTS SEE FINAL PLAT OF GRAEAGLE ESTATES.
 - 3.) FOR CONFIGURATION AND LOCATION OF CURRENT TAX LOTS SEE DOCUMENTS LISTED IN THE "TAX LOT/DEED RECORD" BELOW.

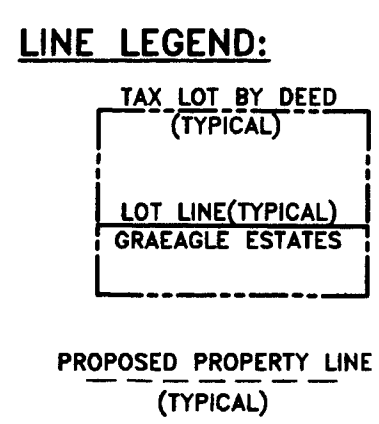


LINE TABLE (FOR SHEET 2)

LINE	DISTANCE	BEARING
L1	11.97'	N87°03'18"E
[RECORD]	11.97'	N87°03'18"E
L2	1.03'	N82°36'24"E
[RECORD]	1.03'	N82°36'24"E
L3	30.00'	S13°42'36"W
L4	0.37'	S15°49'29"W
[RECORD]	0.43'	S15°36'19"W
L5	24.97'	S76°16'28"E
[RECORD]	32.19'	S76°17'08"E
L7	9.94'	S07°54'15"W
L8	25.77'	S14°38'33"E
L9	10.00'	N24°38'19"E
L10	20.31'	N73°04'40"E
L11	23.72'	N19°04'50"E
L12	44.33'	S84°46'27"E
L13	31.16'	N15°30'51"E
L14	10.33'	S00°44'35"E
L15	22.97'	S82°01'51"W
L16	7.75'	S38°37'48"W
L17	26.54'	S19°18'01"W
L18	43.71'	S88°41'38"W
L19	31.72'	S89°41'38"W
L20	11.99'	S88°41'38"W
L21	33.04'	S19°26'50"E
L22	28.26'	S70°33'10"W
L23	36.69'	S07°22'40"W
L24	21.52'	S13°18'31"E
L25	21.18'	S13°14'45"W
L26	22.04'	N82°36'24"E
L27	9.35'	S33°57'02"W
L28	17.67'	S22°13'49"E
L29	22.89'	S87°25'41"W
L30	64.38'	N49°47'21"E
L31	63.85'	N47°42'43"E
L32	46.48'	S26°07'57"E
L33	69.72'	N05°38'50"W

CURVE TABLE

CURVE	DELTA	RADIUS	LENGTH	CHORD	CHORD BEARING
1	36°44'39"	477.46'	306.20'	300.98'	N85°20'17"E
[RECORD]	36°44'51"	477.46'	306.23'	300.98'	N85°20'17"E
2	15°38'13"	954.42'	260.48'	259.87'	N74°46'42"E
[RECORD]	15°38'23"	954.42'	260.53'	259.72'	N74°47'12"E
3	17°44'36"	440.74'	136.49'	134.93'	S88°35'20"E
[RECORD]	17°36'54"	440.74'	136.48'	134.93'	S88°35'20"E
4	12°28'08"	507.48'	12.71'	12.71'	S77°00'27"E
[RECORD]	12°28'08"	507.48'	12.81'	12.81'	S77°00'32"E
5	4°22'13"	507.46'	38.71'	38.70'	S79°54'36"E
[RECORD]	4°22'10"	507.46'	38.70'	38.69'	S79°55'02"E
6	18°06'28"	507.46'	160.37'	159.71'	N88°51'05"E
7	12°49'55"	507.46'	113.65'	113.41'	N73°22'55"E
8	1°20'40"	924.42'	21.69'	21.69'	N67°37'55"E
9	81°13'31"	21.75'	30.83'	28.32'	N61°34'22"W
10	61°43'15"	75.00'	80.79'	76.94'	N51°49'14"W
11	124°31'39"	23.00'	49.99'	40.72'	S28°18'48"E
12	124°31'39"	45.00'	97.50'	79.86'	N28°18'48"W
13	28°12'32"	65.00'	29.73'	29.47'	N77°28'21"W
14	43°41'09"	65.00'	49.56'	48.37'	N42°31'34"W
15	54°38'05"	65.00'	61.98'	59.66'	N06°38'00"E
16	64°30'47"	90.82'	102.26'	96.94'	S66°12'26"W
17	64°24'05"	112.82'	126.81'	120.24'	N68°09'05"E
18	42°00'10"	132.82'	97.37'	95.20'	N60°21'32"E
19	16°54'55"	132.82'	39.21'	39.07'	N89°49'05"E
20	89°18'10"	70.00'	109.10'	98.39'	S28°24'27"E
21	89°40'13"	50.00'	78.25'	70.51'	S28°13'26"E
22	49°54'14"	87.54'	76.24'	73.86'	N85°10'24"E
23	05°24'29"	132.82'	12.53'	12.53'	N89°39'15"E
24	49°54'14"	87.54'	76.24'	73.86'	N85°10'24"W
25	36°44'39"	507.46'	325.44'	319.89'	N85°00'26"E
[RECORD]	36°44'39"	507.46'	325.47'	319.92'	N85°00'26"E
26	4°46'56"	924.42'	77.16'	77.14'	S80°12'20"W



SURVEY NARRATIVE TO COMPLY WITH PARAGRAPH 209.250 OF THE OREGON REVISED STATUTES.

PURPOSE: TO MAKE OF RECORD MONUMENTS THAT WERE SET FOR A PROPOSED REPLAT OF GRAEAGLE ESTATES, WHICH HAS BEEN PUT ON HOLD AT THIS TIME.

PROCEDURE: UTILIZING INFORMATION AND FOUND MONUMENTATION PER FILED SURVEYS NO. 1156, 5464, 14776, 18053 AND 18923, AND FINAL PLATS OF VIA LOMA SUBDIVISION, HIGH OAKS SUBDIVISION, AND HILLCREST HEIGHTS SUBDIVISION FOR CONTROL, I SET MONUMENTS AS SHOWN HEREON. AN ELECTRONIC TOTAL STATION WAS USED TO MAKE ALL MEASUREMENTS.

RECEIVED
Date: 1-29-10 By: DJC
This survey consists of:
1 sheet(s) Map
1 page(s) Narrative
JACKSON COUNTY SURVEYOR

REGISTERED PROFESSIONAL LAND SURVEYOR
Douglas C. McMahan
OREGON
DOUGLAS C. McMAHAN
No. 1813
RENEWS 12/31/2010

TAX LOT/DEED RECORD

REFERENCE LETTER	(37 1W 22DC) TAX LOT NO.	J.C.D.R.
A	120	2008-018335
B	119	2008-018337
C	118	2008-018339
D	117	2008-018341
E	116	2006-012138
F	115	2008-018343
G	114	2008-018345
H	107	2005-075710
I	106	2006-017248
J	105	2006-017248
K	104	2006-047301
L	103	2006-050766
M	102	2005-046434
N	101	2008-046431
O	110	2006-017248
P	109	2005-041392
Q	108	2006-053777
R	113	2004-056865
S	112	2004-056866
T	111	2006-006297
U	123	2008-018347
V	122	2008-053306
W	121	2008-018349
X	100	97-34665