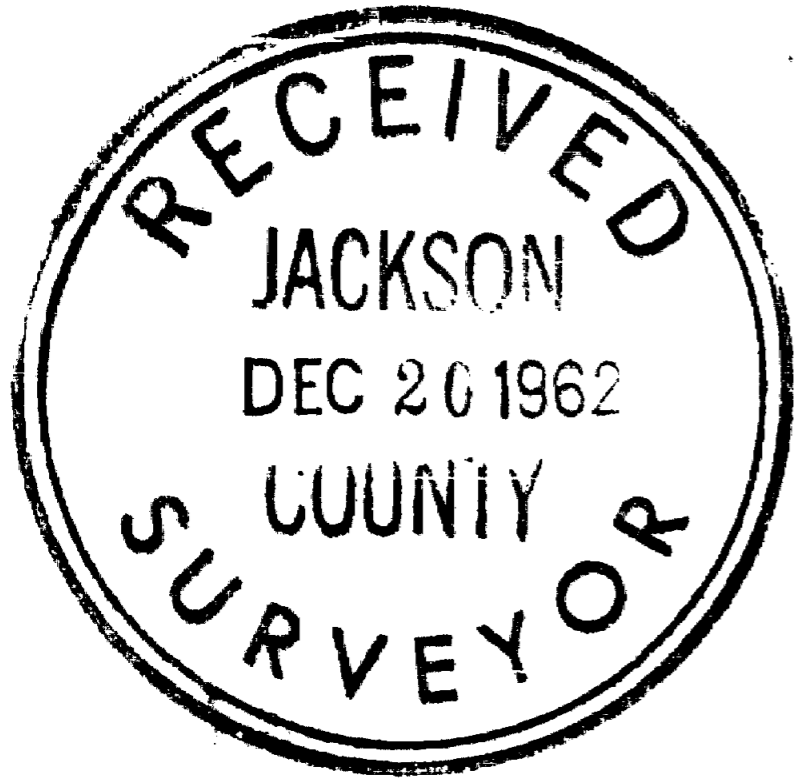


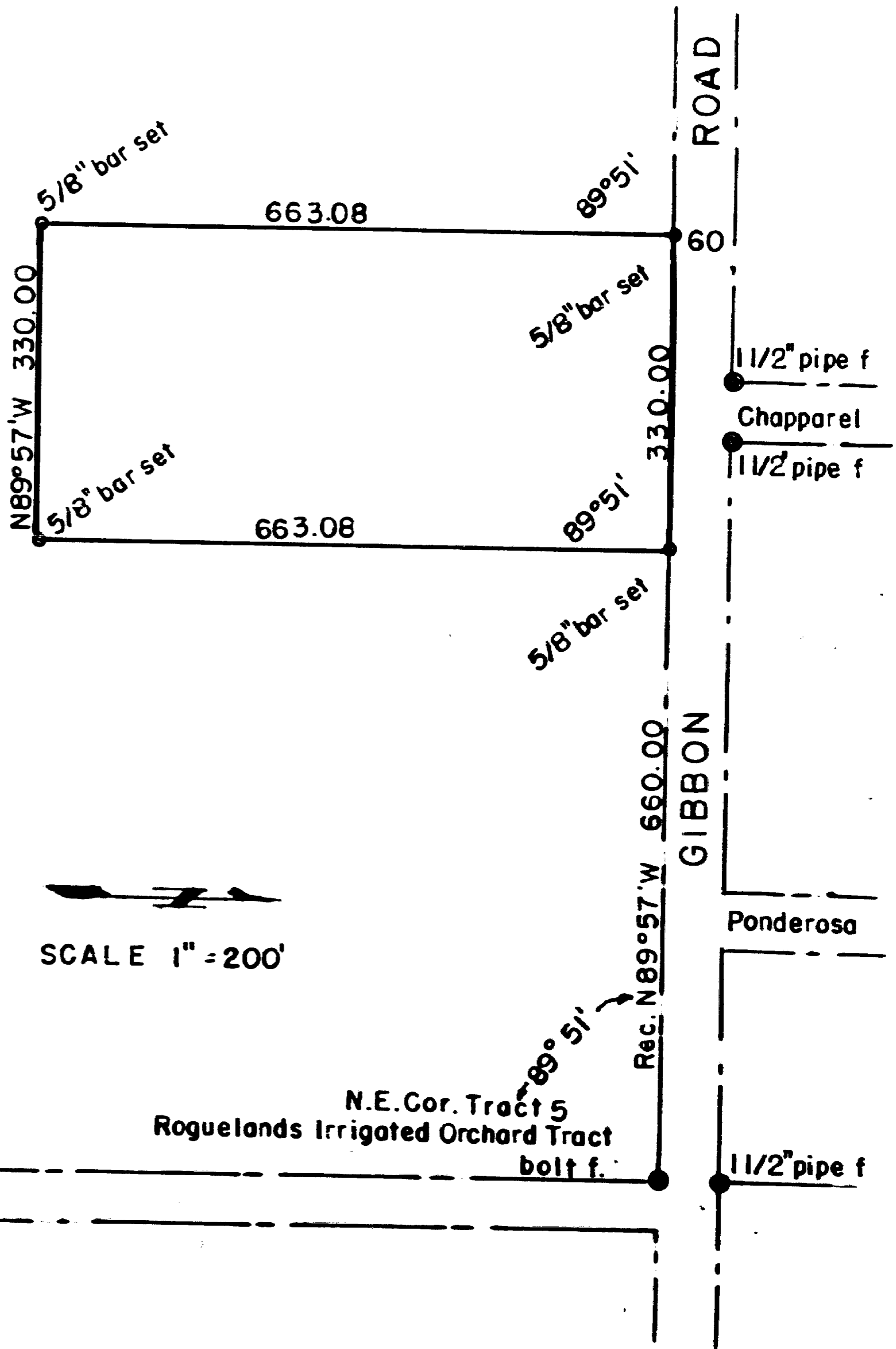
Survey for Mr. Raymond Golden, 629 Gibbon Rd.
In Tract 5 Roguelands irrigated Orchard Tracts
Sec. 26, T. 36 S. R. 2 W. Jackson County, Oregon.
Dec. 1, 1962



REGISTERED
OREGON
LAND SURVEYOR

L. N. Dow

MAY 6, 1949
L. N. DOW
251



SCALE 1" = 200'

Written narrative to accompany plat for Survey No. 2059
Survey in Section 26, T.36S. R. 2 W. W.M. Jackson County, Oregon.
Being in Roguelands Irrigated Orchard Tracts (part of Tract 5)
Survey made December 1, 1962.

Procedure: Found the southwest corner of Meadowlark Subdivision No. 1, and several block corners along Gibbon Road, in said subdivision for the orientation of Gibbon Road, we also found the N.E. Corner of Tract 5 Rogueland Irrigated Orchard Tracts, a large Bolt. Also found a 1 inch pipe to the west along the east line of Tract 5.

We then ran N 89°57'W along the south line of Gibbon Road a distance of 660.00 feet and found a 5/8" bar at the proper distance, but 0.70 feet north of line position for this point, we set a 5/8" bar at the true position for this point, and ran on a bearing parallel to the east line of Tract NO. 5 a distance of 663.08 feet and set a 5/8" Iron bar, we then ran N 89°57'W from this last point and set a 5/8" bar.

Returning to the first bar set on Gibbon Road south line (660.00 feet west of the Northeast corner of Tract NO. 5) we ran N 89°57'W 330.00 feet and set a 5/8" bar for the northwest corner of the tract being surveyed.

