

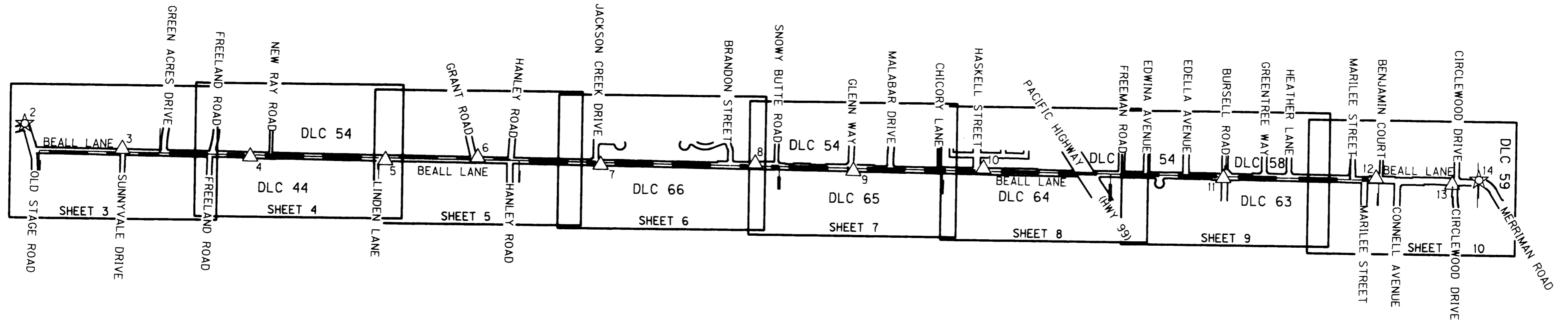
**SHEET INDEX**

1. SHEET LAYOUT AND NARRATIVE
2. CONTROL NETWORK AND BASIS OF BEARING
- 3-10. RE-MONUMENTATION SURVEY

SE 1/4 SEC 9 T37S R2W WM  
 SW 1/4 SEC 9 T37S R2W WM  
 SE 1/4 SEC 10 T37S R2W WM  
 SW 1/4 SEC 10 T37S R2W WM  
 SE 1/4 SEC 11 T37S R2W WM  
 SW 1/4 SEC 11 T37S R2W WM  
 SW 1/4 SEC 12 T37S R2W WM

\*\* RECEIVED \*\*  
 DATE 1-15-10 BY *LB*  
 This survey consists of:  
 - 10 - sheet(s) Map  
 - 2 - page(s) Narrative  
 JACKSON COUNTY  
 SURVEYOR

**SHEET LAYOUT DIAGRAM**  
 NOT TO SCALE



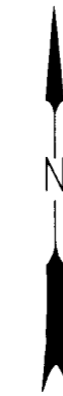
**NARRATIVE**

THE PURPOSE OF THIS SURVEY IS TO PERPETUATE THE POSITIONS OF ANY EXISTING SURVEY MONUMENTS OF RECORD THAT LIE WITHIN THE PROJECT AREA IN SUPPORT OF A PAVEMENT OVERLAY PROJECT ALONG BEALL LANE. THIS WAS ACCOMPLISHED BY TYING THE FOUND MONUMENTS TO THE PROJECT CONTROL NETWORK PER SURVEY NUMBER 20536. THE FOUND MONUMENTS WERE THEN REFERENCED TO THE CURB AND EDGE OF ROADWAY AS SHOWN HEREON FOR ALL PRIVATE CORNERS OF RECORD. DETAILS OF EACH REFERENCED MONUMENTS CAN BE FOUND ON PAGES 3 TO 10. THE COUNTY SURVEYORS OFFICE HAS REFERENCED ALL DLC CORNERS AND NO ATTEMPT BY THIS OFFICE WAS MADE TO SURFACE THE DLC CORNERS. THE PROJECT AREA IS ALL THE PAVED AREA OF BEALL LANE FROM OLD STAGE ROAD TO MERRIMAN ROAD LOCATED IN JACKSON COUNTY, OREGON. THIS SURVEY WAS MADE AT THE REQUEST OF JACKSON COUNTY OREGON AND THE OREGON DEPARTMENT OF TRANSPORTATION (ODOT) IN SUPPORT OF A PROJECT IN THE PREVIOUSLY DESCRIBED VICINITY. THE PROPERTY LINES AND RIGHT-OF-WAY LINES AS SHOWN ON THIS SURVEY ARE APPROXIMATE, AND ARE INTENDED FOR VISUAL REFERENCE PURPOSES ONLY.

THIS SURVEY WAS PERFORMED IN DECEMBER OF 2009. THE SURVEY EQUIPMENT CONSISTED OF ONE TRIMBLE R8 GPS RECEIVER, ONE TRIMBLE 5700 GPS RECIEVER, ONE TRIMBLE S6 ROBOTIC TOTAL STATION, ONE TRIMBLE 5603 TOTAL STATION AND ONE TRIMBLE TSC2 DATA COLLECTOR.

**REFERENCES**

ALL RECORDS LISTED IN THE RECOVERED MONUMENTS TABLES ON SHEETS 3 - 10 HEREON.



LEGEND	
☆	FOUND GPS NETWORK POINT
△	FOUND NETWORK POINT

ENGLISH

REGISTERED  
 PROFESSIONAL  
 LAND SURVEYOR

*Logan Miles*  
 OREGON  
 JULY 12, 2005  
 LOGAN MILES  
 65452

RENEWAL: DEC. 31, 2010

FILE NAME: 16479\_Mon Beall.dgn  
**OBEC CONSULTING ENGINEERS**  
 Corporate Office: 920 COUNTRY CLUB ROAD, SUITE 100B EUGENE, OREGON 97401-6089, 541-683-6090  
 2235 MISSION STREET SE, SUITE 100 SALEM, OREGON 97302-1295, 503-589-4100  
 831 O'HARE PARKWAY MEDFORD, OREGON 97504-4005, 541-774-5590  
 5005 SW MEADOWS ROAD, SUITE 120 LAKE OSWEGO, OREGON 97035, 503-620-6103

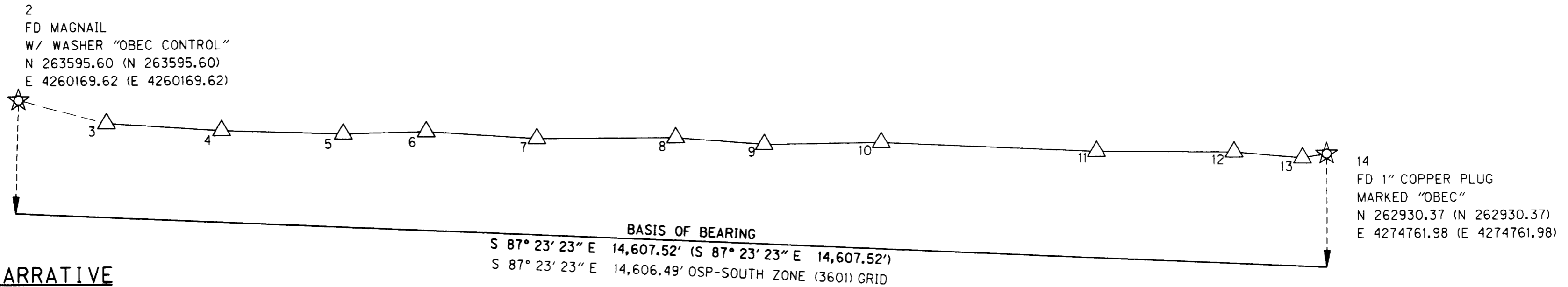
OREGON DEPARTMENT OF TRANSPORTATION  
 RE-MONUMENTATION SURVEY  
 JACKSON COUNTY ROADS: PAVEMENT RESURFACING  
 (BEALL LANE) JACKSON COUNTY

ODOT REGION 3  
 3500 NW STEWART PARKWAY  
 ROSEBURG, OR. 97470  
 DECEMBER, 2009  
 NO SCALE  
 SHEET 1 OF 10  
 KEY NO. 16479

J. COLTON	OBEC	DESIGNED: Logan Miles	PROJ. NO. 019-084.46
APPROVED BY: SURVEY GROUP MNGR.		DRAWN: Logan Miles	CHK'D: W. DONOVAN

SE 1/4 SEC 9 T37S R2W WM  
 SW 1/4 SEC 9 T37S R2W WM  
 SE 1/4 SEC 10 T37S R2W WM  
 SW 1/4 SEC 10 T37S R2W WM  
 SE 1/4 SEC 11 T37S R2W WM  
 SW 1/4 SEC 11 T37S R2W WM  
 SW 1/4 SEC 12 T37S R2W WM

RECEIVED  
 DATE 1-15-10 BY LB  
 This survey consists of:  
 12 sheet(s) Map  
 2 page(s) Narrative  
 JACKSON COUNTY  
 SURVEYOR



**CONTROL NARRATIVE**

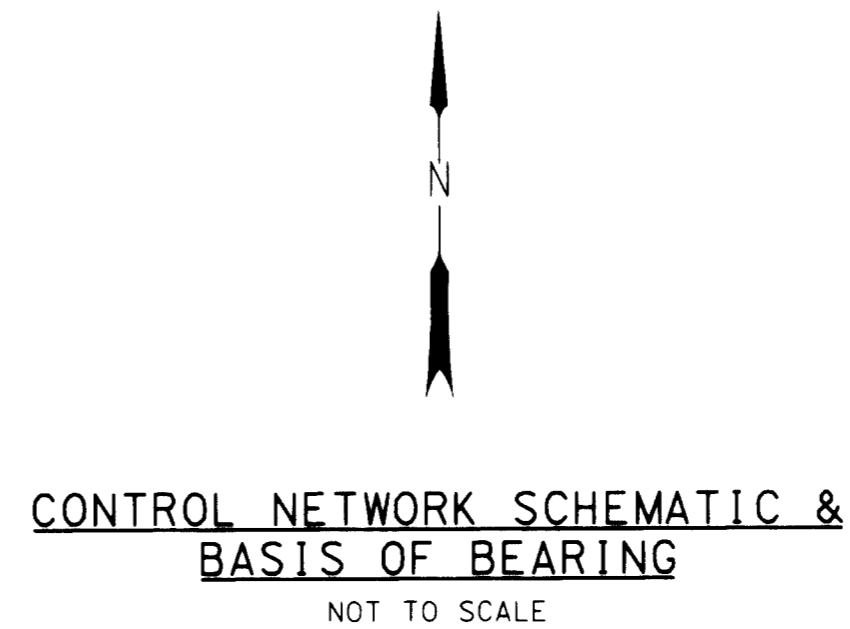
PROJECT: JACKSON COUNTY ROADS:  
 PAVEMENT RESURFACING (BEALL LANE)  
 LOCATION: JACKSON COUNTY  
 ODOT KEY NUMBER: 16479  
 OBEC PROJECT: 0019-0084.46  
 SURVEY DATUM:  
 HORIZONTAL - LOCAL DATUM PLANE (LDP) DERIVED FROM  
 OREGON STATE PLANE, SOUTH ZONE - NAD 83(CORS96)  
 EPOCH 2002 (INTERNATIONAL FEET) PER CS 20536

**HORIZONTAL CONTROL SURVEY**

THE INITIAL CONTROL NETWORK MONUMENTATION WAS ESTABLISHED IN HORIZONTAL CONTROL AND RECOVERY, FILED AS SURVEY NUMBER 20536. THIS CONTROL NETWORK WAS USED AS SHOWN HEREON.

THIS SURVEY UTILIZED A LOCAL DATUM PLANE (LDP) COORDINATE SYSTEM, WHICH IS RELATIVE TO THE OREGON STATE PLANE COORDINATE SYSTEM - SOUTH ZONE, NAD 83(CORS96) EPOCH 2002. TO CONVERT THE LDP COORDINATES TO THE OREGON STATE PLANE COORDINATE SYSTEM - SOUTH ZONE, NAD 83(CORS96) EPOCH 2002, MULTIPLY THE LDP COORDINATE VALUES BY A COMBINED FACTOR OF 0.99992976.

CONTROL POINTS FOR THIS SURVEY WERE NOT SET ON NOR DO THEY REPRESENT PROPERTY LINES OR RIGHT-OF-WAY LINES AND ARE INTENDED FOR USE SOLELY BY JACKSON COUNTY ROADS DEPARTMENT AND OBEC CONSULTING ENGINEERS IN SUPPORT OF FUTURE PROJECTS. IT IS NOT OUR INTENT TO PERPETUATE THESE CONTROL POINTS AS MONUMENTS.



LEGEND	
	FOUND GPS NETWORK POINT
	FOUND NETWORK POINT
	LINES OF OBSERVATION (NOT INTERVISIBLE)
	LINES OF OBSERVATION (INTERVISIBLE)
( )	RECORD INFORMATION PER CS 20536

RPC = RED PLASTIC CAP  
 CONC = CONCRETE

**NETWORK POINT COORDINATE TABLE**

PT. ID.	LDP NORTHING	LDP EASTING	DESCRIPTION
1	273947.90	4268729.99	FOUND 5/8" X 30" REBAR W/ RPC STAMPED "OBEC CONTROL" - PER CS 20536
2	263595.60	4260169.62	FOUND MAGNAIL & WASHER STAMPED "OBEC CONTROL" - PER CS 20536
3	263334.33	4261149.68	FOUND 5/8" X 30" REBAR W/ RPC STAMPED "OBEC CONTROL" - PER CS 20536
4	263249.74	4262432.66	FOUND 5/8" X 30" REBAR W/ RPC STAMPED "OBEC CONTROL" - PER CS 20536
5	263204.25	4263787.75	FOUND 5/8" X 30" REBAR W/ RPC STAMPED "OBEC CONTROL" - PER CS 20536
6	263223.39	4264712.30	FOUND 5/8" X 30" REBAR W/ RPC STAMPED "OBEC CONTROL" - PER CS 20536
7	263140.34	4265946.15	FOUND 5/8" X 30" REBAR W/ RPC STAMPED "OBEC CONTROL" - PER CS 20536
8	263140.30	4267499.06	FOUND 1" COPPER PLUG, FLUSH IN CONC. STAMPED "OBEC" - PER CS 20536
9	263059.72	4268484.52	FOUND 5/8" X 30" REBAR W/ RPC STAMPED "OBEC CONTROL" - PER CS 20536
10	263075.83	4269792.86	FOUND 1" COPPER PLUG, FLUSH IN CONC. STAMPED "OBEC" - PER CS 20536
11	262966.51	4272200.57	FOUND 5/8" X 30" REBAR W/ RPC STAMPED "OBEC CONTROL" - PER CS 20536
12	262953.36	4273730.45	FOUND 5/8" X 30" REBAR W/ RPC STAMPED "OBEC CONTROL" - PER CS 20536
13	262885.02	4274494.07	FOUND 1" COPPER PLUG, FLUSH IN CONC. STAMPED "OBEC" - PER CS 20536
14	262930.37	4274761.98	FOUND 1" COPPER PLUG, FLUSH IN CONC. STAMPED "OBEC" - PER CS 20536

ENGLISH

REGISTERED  
 PROFESSIONAL  
 LAND SURVEYOR

LOGAN MILES  
 JULY 12, 2005  
 OREGON  
 65452  
 RENEWAL: DEC. 31, 2010

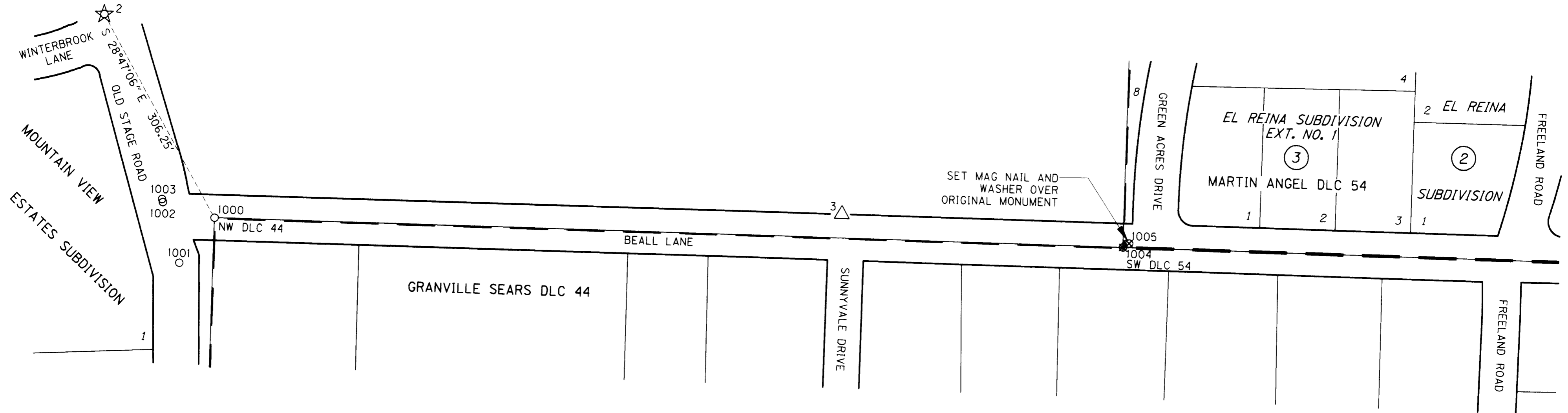
OBEC CONSULTING ENGINEERS  
 Corporate Office: 920 COUNTRY CLUB ROAD, SUITE 100B EUGENE, OREGON 97401-6089, 541-683-6090  
 2235 MISSION STREET SE, SUITE 100 SALEM, OREGON 97302-1295, 503-589-4100  
 831 O'HARE PARKWAY MEDFORD, OREGON 97504-4005, 541-774-5590  
 5005 SW MEADOWS ROAD, SUITE 120 LAKE OSWEGO, OREGON 97035, 503-620-6103

OREGON DEPARTMENT OF TRANSPORTATION  
 RE-MONUMENTATION SURVEY  
 JACKSON COUNTY ROADS: PAVEMENT RESURFACING  
 (BEALL LANE) JACKSON COUNTY

ODOT REGION 3 DECEMBER, 2009  
 3500 NW STEWART PARKWAY NO SCALE  
 ROSEBURG, OR. 97470 KEY NO. 16479 SHEET 2 OF 10  
 DESIGNED: Logan Miles PROJ. NO. 019-084.46  
 DRAWN: Logan Miles CHK'D: W. DONOVAN

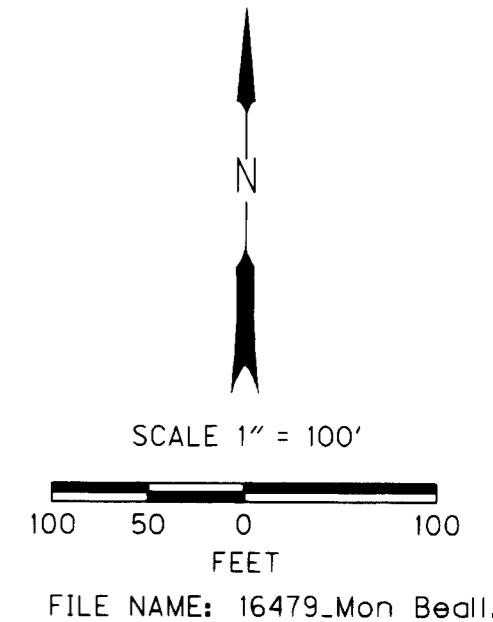
SW 1/4 SEC 9 T37S R2W WM  
SE 1/4 SEC 9 T37S R2W WM

**\*\* RECEIVED \*\***  
DATE 1-15-10 BY bb  
This survey consists of:  
10 sheet(s) Map  
0 page(s) Narrative  
JACKSON COUNTY  
SURVEYOR



SEE SHEET 4

LEGEND	
○	FOUND MONUMENT NOTED IN TABLE - PER CS 20536
⊗	FOUND MONUMENT - PER CS 20536 THAT HAS BEEN PAVED OVER, NOTED IN TABLE
■	FOUND GOVERNMENT MONUMENT - PER CS 20536 THAT HAS BEEN PAVED OVER NOTED IN TABLE REFERENCE POINTS ESTABLISHED BY COUNTY SURVEYOR'S OFFICE
△	FOUND NETWORK POINT - PER CS 20536
☆	FOUND GPS NETWORK POINT - PER CS 20536
—	APPROXIMATE RIGHT-OF-WAY
—	APPROXIMATE PROPERTY LINE



**OBEC CONSULTING ENGINEERS**  
www.obec.com  
Corporate Office: 920 COUNTRY CLUB ROAD, SUITE 100B EUGENE, OREGON 97401-6089, 541-683-6090  
2235 MISSION STREET SE, SUITE 100 SALEM, OREGON 97302-1295, 503-589-4100  
831 O'HARE PARKWAY MEDFORD, OREGON 97504-4005, 541-774-5590  
5005 SW MEADOWS ROAD, SUITE 120 LAKE OSWEGO, OREGON 97035, 503-620-6103

**ENGLISH**  
**REGISTERED PROFESSIONAL LAND SURVEYOR**  
*Logan Miles*  
**OREGON**  
**JULY 12, 2005**  
**LOGAN MILES**  
**65452**  
RENEWAL: DEC. 31, 2010

**OREGON DEPARTMENT OF TRANSPORTATION**  
**RE-MONUMENTATION SURVEY**  
**JACKSON COUNTY ROADS: PAVEMENT RESURFACING**  
**(BEALL LANE) JACKSON COUNTY**  
ODOT REGION 3  
3500 NW STEWART PARKWAY  
ROSEBURG, OR. 97470  
KEY NO. 16479  
DECEMBER, 2009  
SCALE 1" = 100'  
SHEET 3 OF 10  
DESIGNED: Logan Miles  
DRAWN: Logan Miles  
CHK'D: W. DONOVAN  
PROJ. NO. 019-084.46

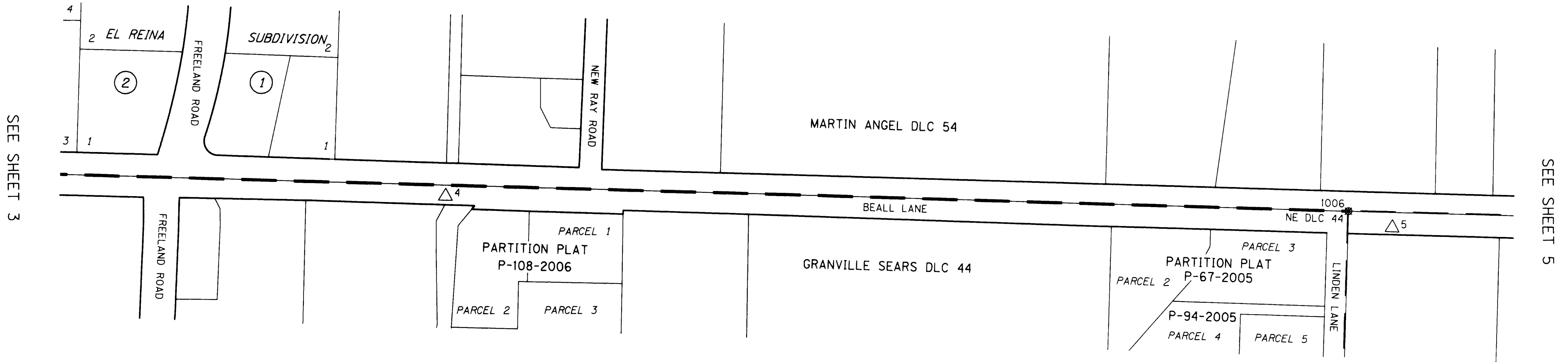
RECOVERED MONUMENT LIST - PER CS 20536

PT. NO.	LDP NORTHING	LDP EASTING	DESCRIPTION & REFERENCE DOCUMENTS
1000	263327.19	4260317.10	FD 2-1/2" BRASS DISK IN CONC STAMPED "JACKSON COUNTY SURVEYOR, T37S R2W DLC NW 44, 2002 UNLAWFUL TO DISTURB", FLUSH
1001	263267.56	4260270.67	FD 5/8" IRON ROD W/YPC STAMPED "JACKSON COUNTY PKS", FLUSH, PER CS 18283
1002	263347.57	4260248.47	FD 5/8" IRON ROD, CAP MISSING, FLUSH, PER CS 18283
1003	263351.60	4260247.34	FD 5/8" IRON ROD, CAP MISSING, FLUSH, PER CS 18283
1004	263291.99	4261523.79	FD 2-1/2" BRASS DISK IN CONC STAMPED "SW DLC 54", REST OF CAP ILLEGIBLE, FLUSH
1005	263297.71	4261531.94	FD 5/8" IRON ROD, DOWN 0.5', ORIGIN UNKNOWN

FD = FOUND  
YPC = YELLOW PLASTIC CAP  
CS = COUNTY SURVEY

SE 1/4 SEC 9 T37S R2W WM  
SW 1/4 SEC 10 T37S R2W WM

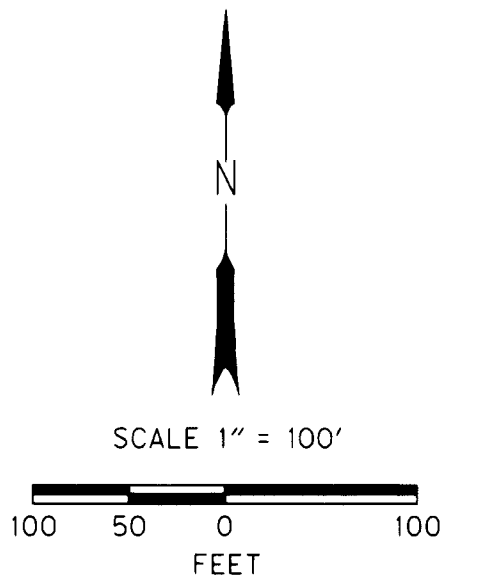
**\*\* RECEIVED \*\***  
DATE: 12-10 BY BB  
This survey consists of:  
12 sheet(s) Map  
2 page(s) Narrative  
JACKSON COUNTY  
SURVEYOR



SEE SHEET 3

SEE SHEET 5

LEGEND	
	FOUND GOVERNMENT MONUMENT - PER CS 20536 THAT HAS BEEN PAVED OVER NOTED IN TABLE REFERENCE POINTS ESTABLISHED BY COUNTY SURVEYOR'S OFFICE
	FOUND NETWORK POINT - PER CS 20536
	APPROXIMATE RIGHT-OF-WAY
	APPROXIMATE PROPERTY LINE



**OBEC CONSULTING ENGINEERS**  
Corporate Offices: 920 COUNTRY CLUB ROAD, SUITE 100B EUGENE, OREGON 97401-6089, 541-683-6090  
2235 MISSION STREET SE, SUITE 100 SALEM, OREGON 97302-1295, 503-589-4100  
831 OHARE PARKWAY MEDFORD, OREGON 97504-4005, 541-774-5590  
5005 SW MEADOWS ROAD, SUITE 120 LAKE OSWEGO, OREGON 97035, 503-620-6103  
www.obec.com

ENGLISH  
**REGISTERED PROFESSIONAL LAND SURVEYOR**  
*Logan Miles*  
OREGON  
JULY 12, 2005  
LOGAN MILES  
65452  
RENEWAL: DEC. 31, 2010

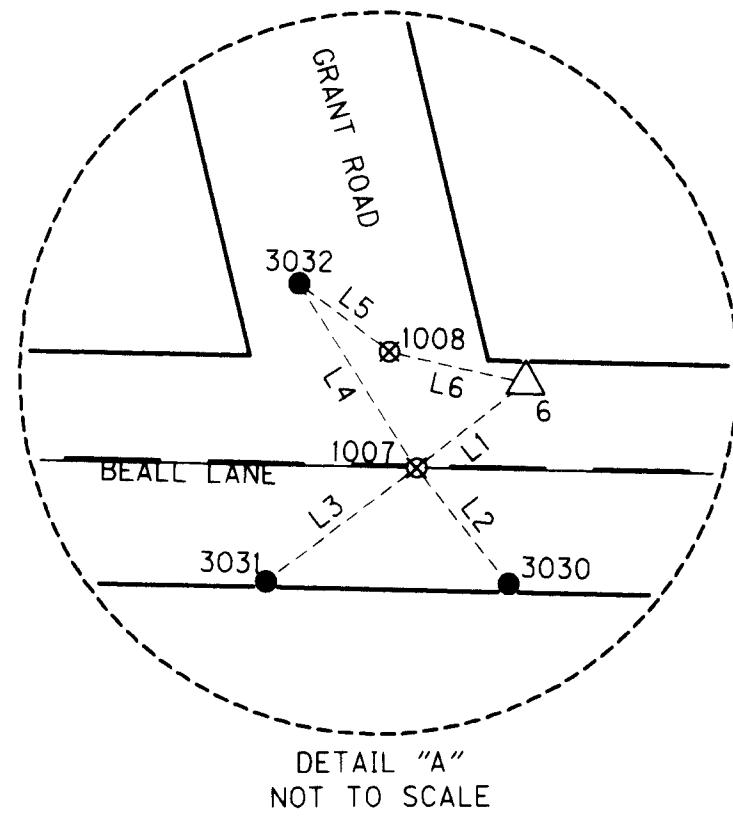
OREGON DEPARTMENT OF TRANSPORTATION  
RE-MONUMENTATION SURVEY  
JACKSON COUNTY ROADS: PAVEMENT RESURFACING  
(BEALL LANE) JACKSON COUNTY  
ODOT REGION 3  
3500 NW STEWART PARKWAY  
ROSEBURG, OR. 97470  
KEY NO. 16479  
DECEMBER, 2009  
SCALE 1" = 100'  
SHEET 4 OF 10  
DESIGNED: Logan Miles  
DRAWN: Logan Miles  
CHK'D: W. DONOVAN  
PROJ. NO. 019-084.46

RECOVERED MONUMENT LIST - PER SN 20536 FD = FOUND

PT. NO.	LDP NORTHING	LDP EASTING	DESCRIPTION & REFERENCE DOCUMENTS
1006	263227.64	4263725.38	FD 2-1/2" BRASS DISK IN CONC, CAP ILLEGIBLE, FLUSH, NE DLC 44

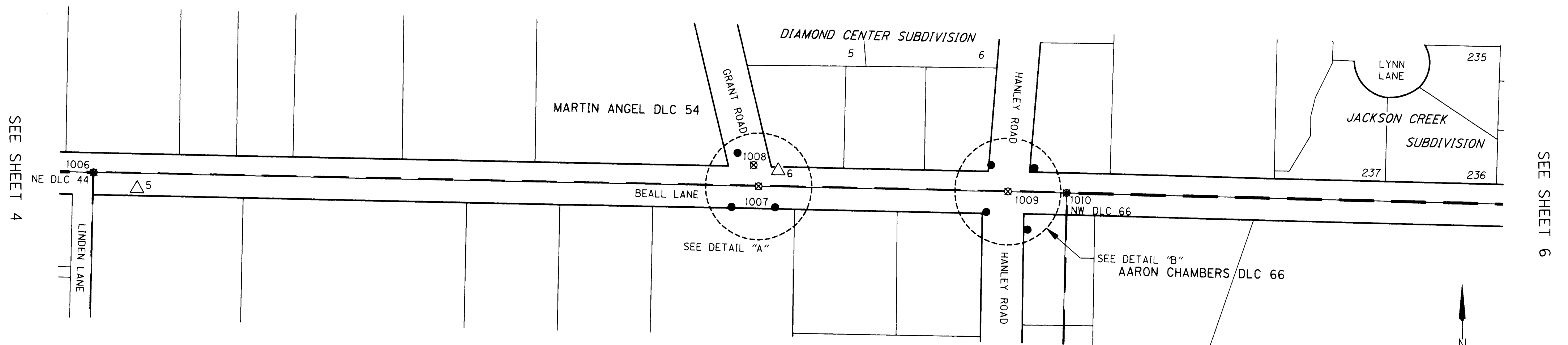
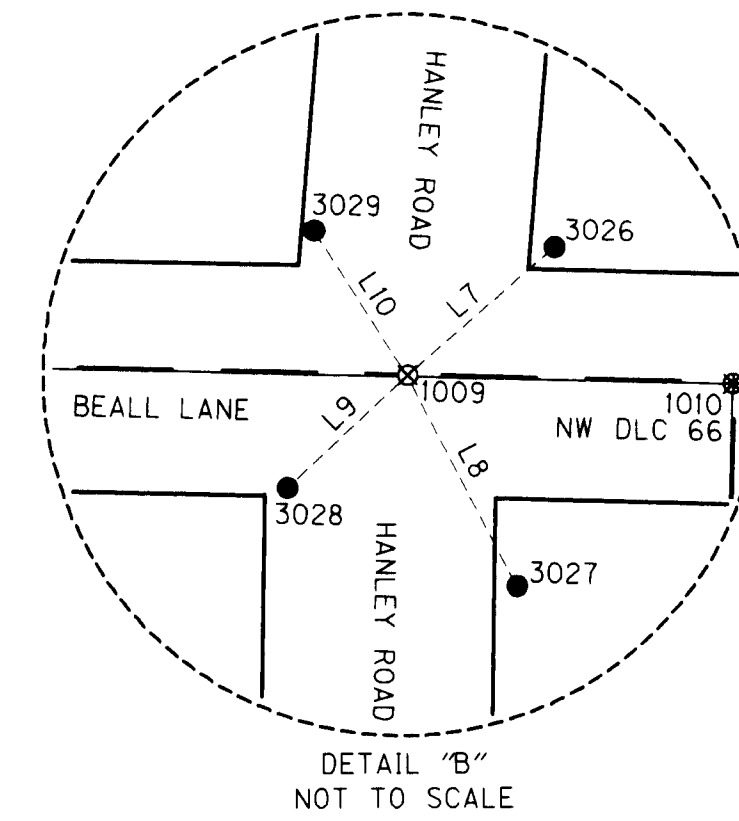
SW 1/4 SEC 10 T37S R2W WM  
SE 1/4 SEC 10 T37S R2W WM

RECEIVED  
DATE 1-15-10 BY [Signature]  
This survey consists of:  
10 sheets Map  
2 pages Narrative  
JACKSON COUNTY SURVEYOR



REFERENCE POINTS LINE TABLE

LINE NO.	BEARING	DISTANCE
L1	S 52°21'20" W	35.94
L2	N 38°08'02" W	38.47
L3	N 53°28'23" E	49.03
L4	S 32°17'24" E	56.85
L5	S 52°39'57" E	29.42
L6	N 76°52'02" W	36.38
L7	S 49°13'15" W	50.71
L8	N 27°13'33" W	61.71
L9	N 47°10'43" E	42.86
L10	S 32°38'23" E	44.77



SEE SHEET 4

SEE SHEET 6

LEGEND	
⊗	FOUND MONUMENT - PER CS 20536 THAT HAS BEEN PAVED OVER, NOTED IN TABLE
⊙	FOUND GOVERNMENT MONUMENT - PER CS 20536 THAT HAS BEEN PAVED OVER NOTED IN TABLE REFERENCE POINTS ESTABLISHED BY COUNTY SURVEYOR'S OFFICE
●	SET REFERENCE POINT TO ORIGINAL MONUMENT AS NOTED IN SET MONUMENT TABLE
△	FOUND NETWORK POINT - PER CS 20536
—	APPROXIMATE RIGHT-OF-WAY
—	APPROXIMATE PROPERTY LINE

SET MONUMENTS TABLE

PT. NO.	LDP NORTHING	LDP EASTING	DATE	DESCRIPTION
3026	263225.09	4265082.11	12/31/09	SET 5/8 " X 30" LONG REBAR WITH AN OPC MARKED " OBEC LS 65452"
3027	263137.10	4265071.95	12/31/09	SET 5/8 " X 30" LONG REBAR WITH AN OPC MARKED " OBEC LS 65452"
3028	263162.84	4265012.28	12/31/09	SET 5/8 " X 30" LONG REBAR WITH AN OPC MARKED " OBEC LS 65452"
3029	263229.68	4265019.57	12/31/09	SET 5/8 " X 30" LONG REBAR WITH AN OPC MARKED " OBEC LS 65452"
3030	263171.18	4264707.60	12/31/09	SET 5/8 " X 30" LONG REBAR WITH AN OPC MARKED " OBEC LS 65452"
3031	263172.27	4264644.44	12/31/09	SET 5/8 " X 30" LONG REBAR WITH AN OPC MARKED " OBEC LS 65452"
3032	263249.50	4264653.48	12/31/09	SET 5/8 " X 30" LONG REBAR WITH AN OPC MARKED " OBEC LS 65452"

OPC = ORANGE PLASTIC CAP

RECOVERED MONUMENT LIST

PT. NO.	LDP NORTHING	LDP EASTING	DATE	DESCRIPTION & REFERENCE DOCUMENTS
1006	263227.64	4263725.38	9/1/09	FD 2-1/2" BRASS DISK IN CONC, CAP ILLEGIBLE, FLUSH, NE DLC 44
1007	263201.45	4264683.84	9/1/09	FD 1/2" ID IRON PIPE, DOWN 0.9, PER 1910 ROAD SURVEY, SEE CS 18929
1008	263231.66	4264676.87	9/1/09	FD 1-1/2" ALUMINUM CAP W/CENTER PUNCH, FLUSH W/AC, PER CS 18929
1009	263191.97	4265043.72	9/1/09	FD 2-1/2" BRASS DISK IN CONC, DOWN 1.0', JACKSON COUNTY CONTROL MONUMENT 1970
1010	263189.32	4265128.35	9/1/09	FD 2-1/2" BRASS CAP IN CONC, CAP ILLEGIBLE, DOWN 0.18', NW DLC 66

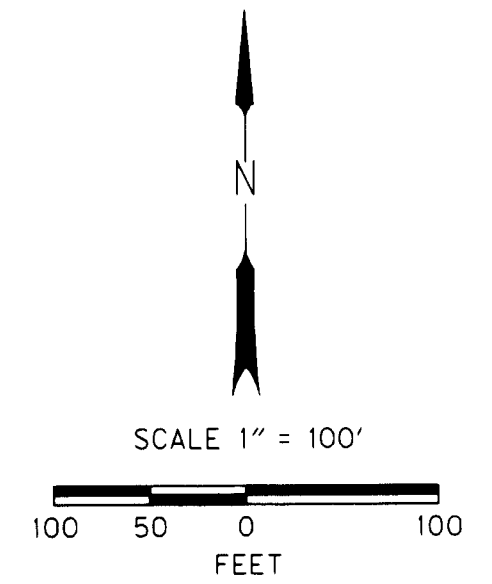
FD = FOUND  
ID = INSIDE DIAMETER  
CS = COUNTY SURVEY

ENGLISH

REGISTERED PROFESSIONAL LAND SURVEYOR

[Signature]  
OREGON  
JULY 12, 2005  
LOGAN MILES  
65452

RENEWAL: DEC. 31, 2010



OBEC CONSULTING ENGINEERS  
www.obec.com  
Corporate Office: 920 COUNTRY CLUB ROAD, SUITE 100B EUGENE, OREGON 97401-6089, 541-683-6090  
2235 MISSION STREET SE, SUITE 100 SALEM, OREGON 97302-1295, 503-589-4100  
831 O'HARE PARKWAY WEDFORD, OREGON 97504-4005, 541-774-5590  
5005 SW MEADOWS ROAD, SUITE 120 LAKE OSWEGO, OREGON 97035, 503-620-6103

OREGON DEPARTMENT OF TRANSPORTATION

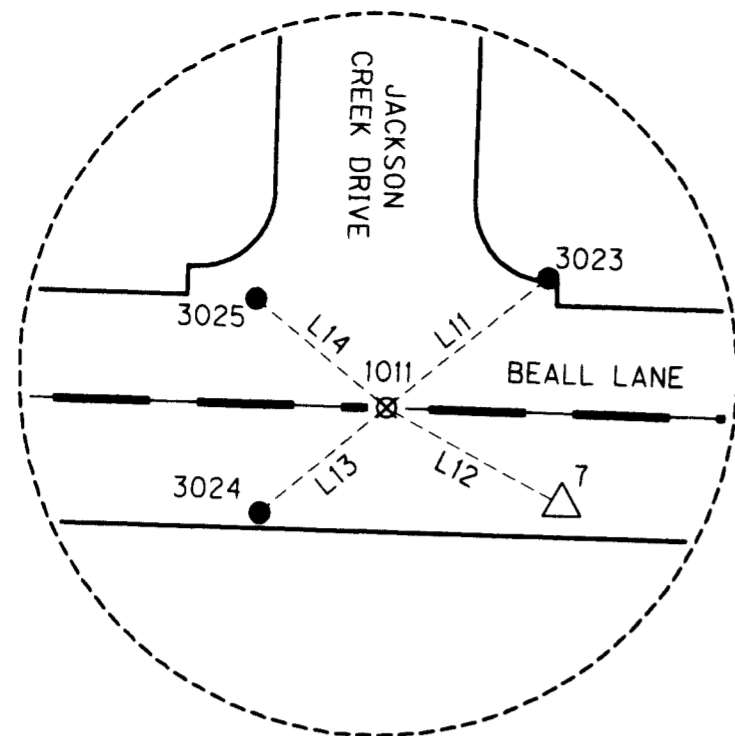
RE-MONUMENTATION SURVEY  
JACKSON COUNTY ROADS: PAVEMENT RESURFACING  
(BEALL LANE) JACKSON COUNTY

ODOT REGION 3  
3500 NW STEWART PARKWAY  
ROSEBURG, OR. 97470  
DECEMBER, 2009  
SCALE 1" = 100'  
SHEET 5 OF 10

DESIGNED: Logan Miles  
DRAWN: Logan Miles  
CHK'D: W. DONOVAN  
PROJ. NO. 019-084.46

SE 1/4 SEC 10 T37S R2W WM  
SW 1/4 SEC 11 T37S R2W WM

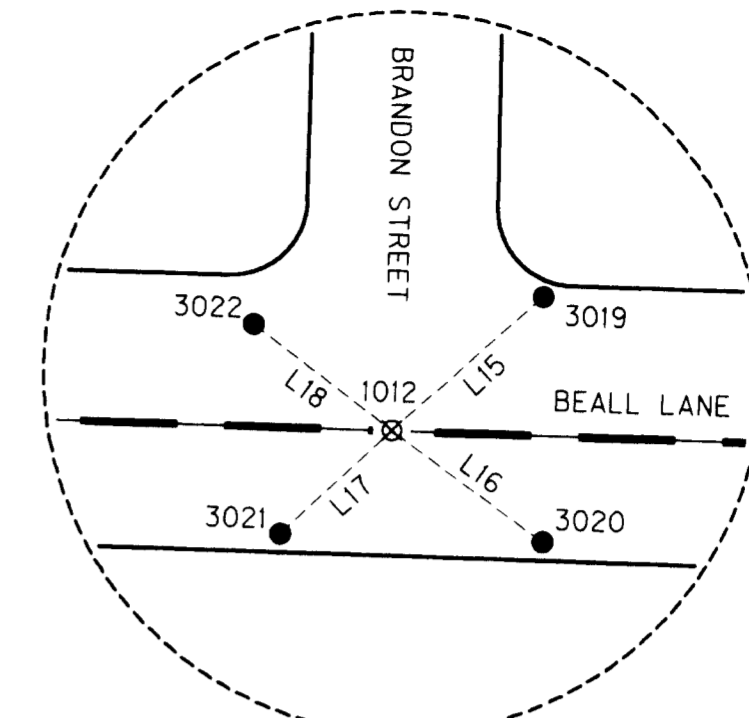
**\*\* RECEIVED \*\***  
DATE 1-15-10 BY RB  
This survey consists of:  
10 sheet(s) Map  
0 page(s) Narrative  
JACKSON COUNTY  
SURVEYOR



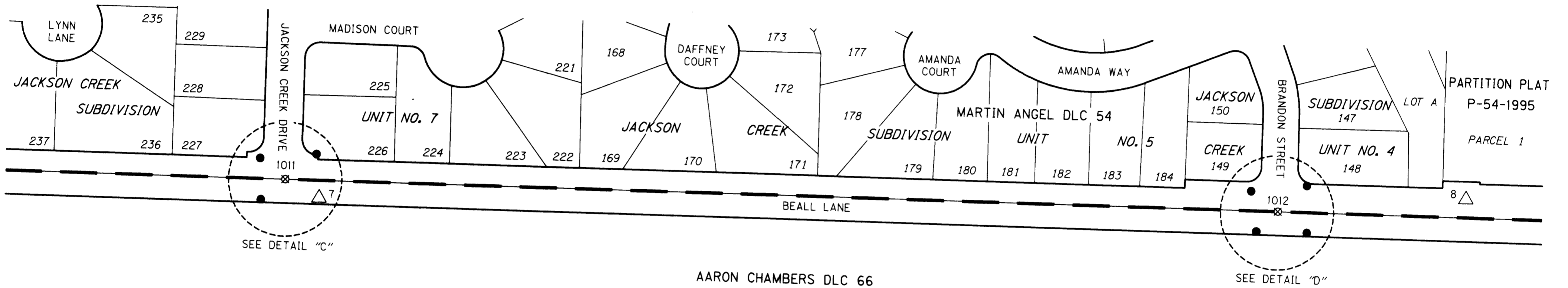
DETAIL "C"  
NOT TO SCALE

REFERENCE POINTS LINE TABLE

LINE NO.	BEARING	DISTANCE
L11	S 51°24'01" W	53.89
L12	N 61°17'48" W	52.15
L13	N 50°35'44" E	42.71
L14	S 50°10'58" E	44.25
L15	S 48°40'57" W	52.35
L16	N 53°43'21" W	48.68
L17	N 47°20'15" E	39.49
L18	S 52°45'11" E	45.30



DETAIL "D"  
NOT TO SCALE



SEE SHEET 5

SEE SHEET 7

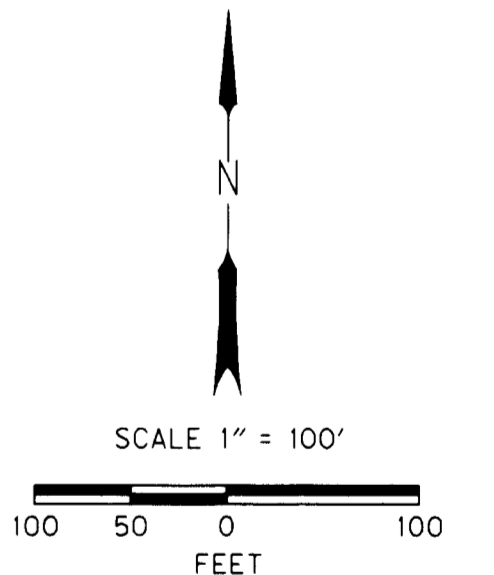
AARON CHAMBERS DLC 66

LEGEND	
⊗	FOUND MONUMENT - PER CS 20536 THAT HAS BEEN PAVED OVER, NOTED IN TABLE
⊠	FOUND GOVERNMENT MONUMENT - PER CS 20536 THAT HAS BEEN PAVED OVER NOTED IN TABLE REFERENCE POINTS ESTABLISHED BY COUNTY SURVEYOR'S OFFICE
●	SET REFERENCE POINT TO ORIGINAL MONUMENT AS NOTED IN SET MONUMENT TABLE
△	FOUND NETWORK POINT - PER CS 20536
—	APPROXIMATE RIGHT-OF-WAY
—	APPROXIMATE PROPERTY LINE

SET MONUMENTS TABLE

OPC = ORANGE PLASTIC CAP

PT. NO.	LDP NORTHING	LDP EASTING	DATE	DESCRIPTION
3019	263158.06	4267284.00	12/18/09	SET 1" COPPER PLUG, MARKED "OBEC", FLUSH IN TOP OF CURB
3020	263094.69	4267283.93	12/18/09	SET 5/8" X 30" LONG REBAR WITH AN OPC MARKED "OBEC LS 65452"
3021	263096.73	4267215.65	12/18/09	SET 5/8" X 30" LONG REBAR WITH AN OPC MARKED "OBEC LS 65452"
3022	263150.91	4267208.62	12/18/09	SET 1" COPPER PLUG, MARKED "OBEC", FLUSH IN TOP OF CURB
3023	263199.01	4265942.51	12/18/09	SET 1" COPPER PLUG, MARKED "OBEC", FLUSH IN TOP OF CURB
3024	263138.28	4265867.39	12/18/09	SET 5/8" X 30" LONG REBAR WITH AN OPC MARKED "OBEC LS 65452"
3025	263193.72	4265866.41	12/18/09	SET 1" COPPER PLUG, MARKED "OBEC", FLUSH IN TOP OF CURB



FILE NAME: 16479\_Mon Beall.dgn

**OBEC CONSULTING ENGINEERS**  
Corporate Office: 920 COUNTRY CLUB ROAD, SUITE 100B EUGENE, OREGON 97401-6089, 541-683-6090  
2235 MISSION STREET SE, SUITE 100 SALEM, OREGON 97302-1295, 503-589-4100  
831 O'HARE PARKWAY MEDFORD, OREGON 97504-4005, 541-774-5590  
5005 SW MEADOWS ROAD, SUITE 120 LAKE OSWEGO, OREGON 97035, 503-620-6103

ENGLISH

REGISTERED PROFESSIONAL LAND SURVEYOR

LOGAN MILES  
OREGON  
JULY 12, 2005  
LOGAN MILES  
65452

RENEWAL: DEC. 31, 2010

OREGON DEPARTMENT OF TRANSPORTATION

RE-MONUMENTATION SURVEY  
JACKSON COUNTY ROADS: PAVEMENT RESURFACING  
(BEALL LANE) JACKSON COUNTY

ODOT REGION 3  
3500 NW STEWART PARKWAY  
ROSEBURG, OR. 97470  
KEY NO. 16479  
DECEMBER, 2009  
SCALE 1" = 100'  
SHEET 6 OF 10

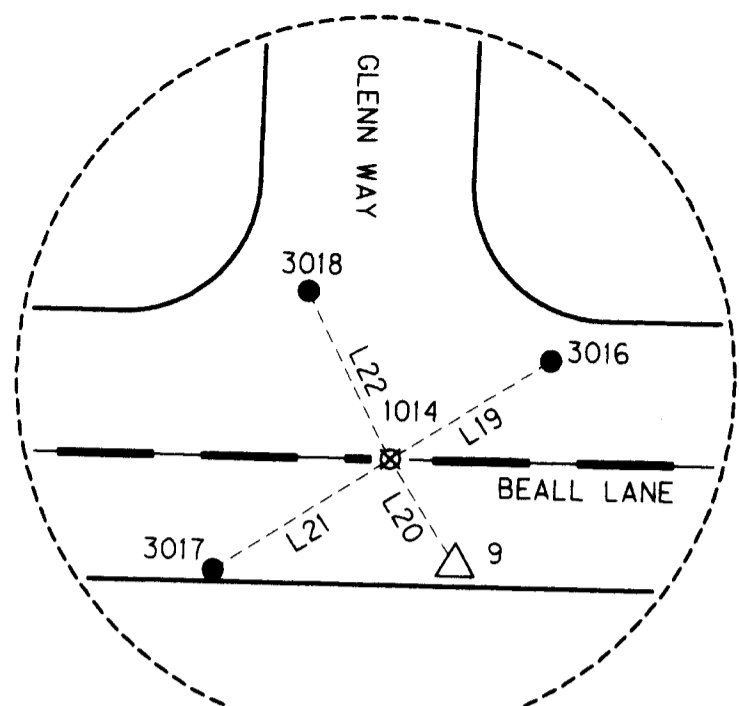
DESIGNED: Logan Miles  
DRAWN: Logan Miles  
CHK'D: W. DONOVAN  
PROJ. NO. 019-084.46

RECOVERED MONUMENT LIST

FD = FOUND  
CS = COUNTY SURVEY

PT. NO.	LDP NORTHING	LDP EASTING	DATE	DESCRIPTION & REFERENCE DOCUMENTS
1011	263165.39	4265900.40	9/1/09	FD 2-1/2" BRASS DISK IN CONC STAMPED "LS 1913", FLUSH, PER POST MONUMENTATION CS 18025
1012	263123.49	4267244.68	9/1/09	FD 2" BRASS DISK IN CONC STAMPED "LS 1913", FLUSH, PER CS 13250

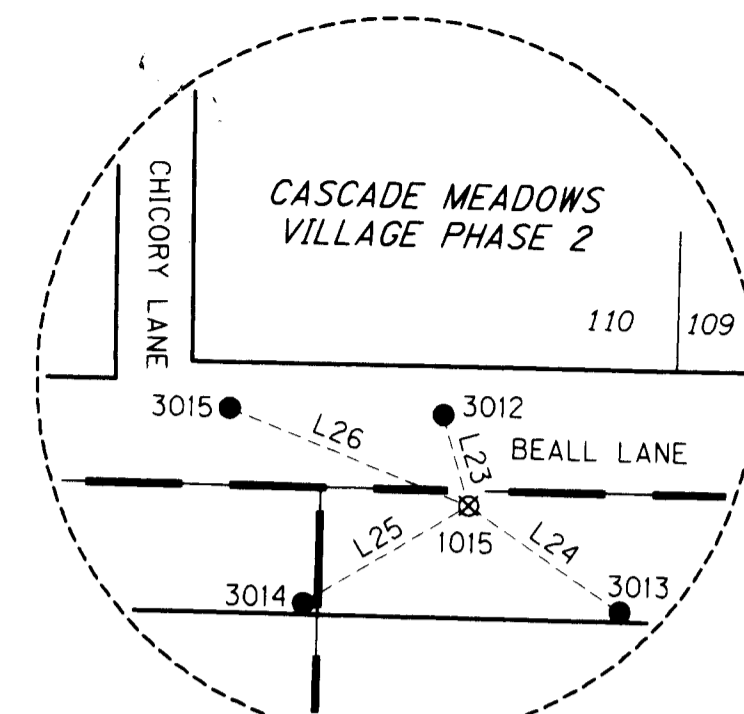
SE 1/4 SEC 10 T37S R2W WM  
SW 1/4 SEC 11 T37S R2W WM



DETAIL "E"  
NOT TO SCALE

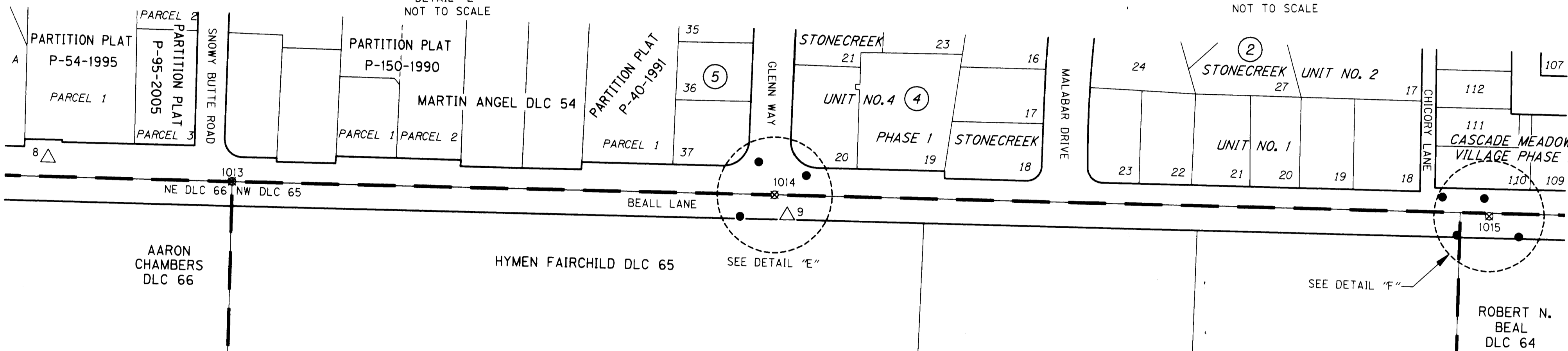
REFERENCE POINTS LINE TABLE

LINE NO.	BEARING	DISTANCE
L19	S 58°54'07" W	48.87
L20	N 31°23'27" W	32.32
L21	N 58°32'23" E	54.30
L22	S 25°46'59" E	48.50
L23	S 15°22'04" E	24.43
L24	N 54°45'16" W	48.06
L25	N 59°55'04" E	49.93
L26	S 67°34'13" E	67.25



DETAIL "F"  
NOT TO SCALE

RECEIVED  
DATE 1-15-10 BY *BB*  
This survey consists of:  
10 sheet(s) Map  
2 page(s) Narrative  
JACKSON COUNTY  
SURVEYOR



SEE SHEET 6

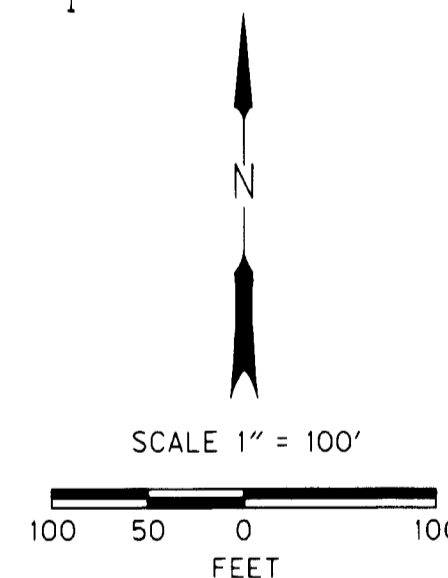
SEE SHEET 8

SET MONUMENTS TABLE

OPC = ORANGE PLASTIC CAP

PT. NO.	LDP NORTHING	LDP EASTING	DATE	DESCRIPTION
3012	263079.86	4269413.88	12/18/09	SET 1" COPPER PLUG, MARKED "OBEC", FLUSH IN TOP OF CURB
3013	263028.57	4269459.60	12/18/09	SET 5/8" X 30" LONG REBAR WITH AN OPC MARKED "OBEC LS 65452"
3014	263031.27	4269377.14	12/18/09	SET 5/8" X 30" LONG REBAR WITH AN OPC MARKED "OBEC LS 65452"
3015	263081.96	4269358.19	12/18/09	SET 1" COPPER PLUG, MARKED "OBEC", FLUSH IN TOP OF CURB
3016	263112.55	4268509.53	12/18/09	SET 1" COPPER PLUG, MARKED "OBEC", FLUSH IN TOP OF CURB
3017	263058.97	4268421.36	12/18/09	SET 5/8" X 30" LONG REBAR WITH AN OPC MARKED "OBEC LS 65452"
3018	263130.98	4268446.59	12/18/09	SET 1" COPPER PLUG, MARKED "OBEC", FLUSH IN TOP OF CURB

LEGEND	
	FOUND MONUMENT - PER CS 20536 THAT HAS BEEN PAVED OVER, NOTED IN TABLE
	FOUND GOVERNMENT MONUMENT - PER CS 20536 THAT HAS BEEN PAVED OVER NOTED IN TABLE REFERENCE POINTS ESTABLISHED BY COUNTY SURVEYOR'S OFFICE
	SET REFERENCE POINT TO ORIGINAL MONUMENT AS NOTED IN SET MONUMENT TABLE
	FOUND NETWORK POINT - PER CS 20536
	APPROXIMATE RIGHT-OF-WAY
	APPROXIMATE PROPERTY LINE



RECOVERED MONUMENT LIST

PT. NO.	LDP NORTHING	LDP EASTING	DATE	DESCRIPTION & REFERENCE DOCUMENTS
1013	263107.83	4267744.52	9/1/09	FD 2-1/2" BRASS DISK IN CONC STAMPED "NE DLC 66" REST OF CAP ILLEGIBLE, DOWN 0.1'
1014	263087.31	4268467.68	9/1/09	FD 2-1/2" BRASS DISK IN CONC STAMPED "LS 2189", DOWN 0.5', PER PER POST MONUMENTATION CS 13879
1015	263056.30	4269420.35	9/1/09	FD BOLT, DOWN 0.3', PER CS 1901

FD = FOUND  
CS = COUNTY SURVEY

ENGLISH

REGISTERED PROFESSIONAL LAND SURVEYOR

*Logan Miles*

OREGON  
JULY 12, 2005  
LOGAN MILES  
65452

RENEWAL: DEC. 31, 2010

OBEC CONSULTING ENGINEERS  
www.obec.com  
Corporate Office: 920 COUNTRY CLUB ROAD, SUITE 100B EUGENE, OREGON 97401-6089, 541-683-6090  
2235 MISSION STREET SE, SUITE 100 SALEM, OREGON 97302-1295, 503-589-4100  
831 O'HARE PARKWAY MEDFORD, OREGON 97504-4005, 541-774-5580  
5005 SW MEADOWS ROAD, SUITE 120 LAKE OSWEGO, OREGON 97035, 503-620-6103

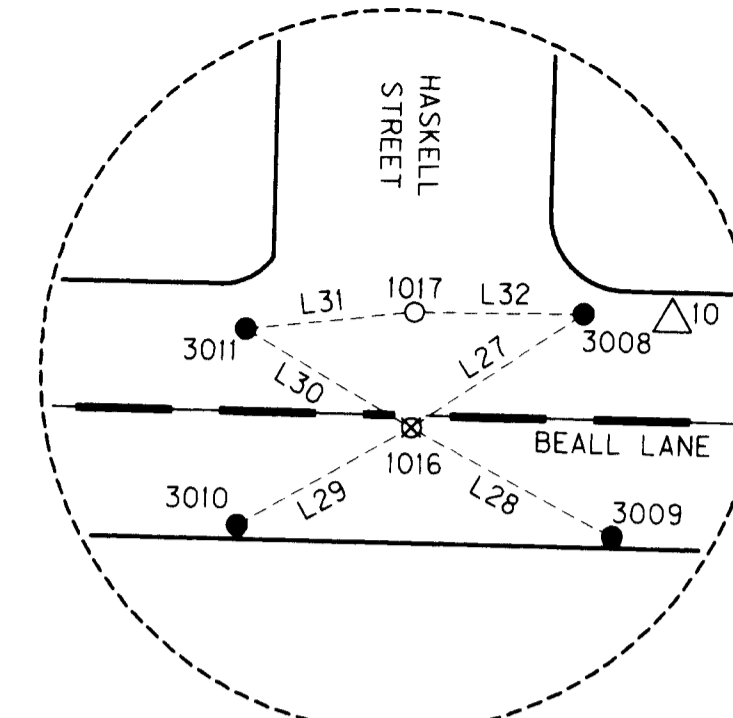
OREGON DEPARTMENT OF TRANSPORTATION  
RE-MONUMENTATION SURVEY  
JACKSON COUNTY ROADS: PAVEMENT RESURFACING  
(BEALL LANE) JACKSON COUNTY

ODOT REGION 3  
3500 NW STEWART PARKWAY  
ROSEBURG, OR. 97470  
KEY NO. 16479  
DESIGNED: Logan Miles  
DRAWN: Logan Miles  
CHK'D: W. DONOVAN  
DECEMBER, 2009  
SCALE 1" = 100'  
SHEET 7 OF 10  
PROJ. NO. 019-084.46

SW 1/4 SEC 11 T37S R2W WM  
SE 1/4 SEC 11 T37S R2W WM

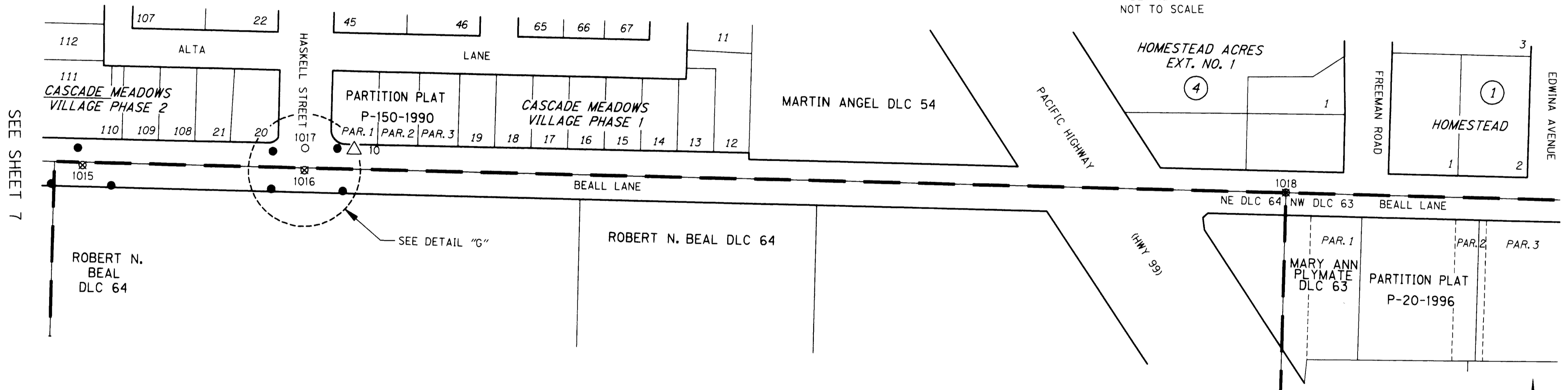
REFERENCE POINTS LINE TABLE

LINE NO.	BEARING	DISTANCE
L27	S 56°54'41" W	53.68
L28	N 61°21'05" W	59.56
L29	N 61°03'42" E	52.04
L30	S 59°06'14" E	50.28
L31	N84°38'22" E	44.21
L32	N 89°10'02" W	44.11



DETAIL "G"  
NOT TO SCALE

RECEIVED  
DATE 1-15-10 BY BB  
This survey consists of:  
10 sheet(s) Map  
2 page(s) Narrative  
JACKSON COUNTY SURVEYOR



SEE SHEET 7

SEE SHEET 9

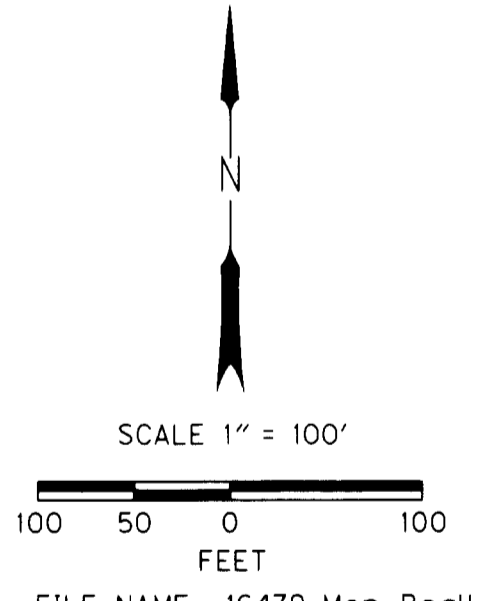
LEGEND

- FOUND MONUMENT NOTED IN TABLE - PER CS 20536
- ⊗ FOUND MONUMENT - PER CS 20536 THAT HAS BEEN PAVED OVER, NOTED IN TABLE
- ⊕ FOUND GOVERNMENT MONUMENT - PER CS 20536 THAT HAS BEEN PAVED OVER NOTED IN TABLE REFERENCE POINTS ESTABLISHED BY COUNTY SURVEYOR'S OFFICE
- SET REFERENCE POINT TO ORIGINAL MONUMENT AS NOTED IN SET MONUMENT TABLE
- △ FOUND NETWORK POINT - PER CS 20536
- APPROXIMATE RIGHT-OF-WAY
- APPROXIMATE PROPERTY LINE

SET MONUMENTS TABLE

PT. NO.	LDP NORTHING	LDP EASTING	DATE	DESCRIPTION
3008	263077.65	4269769.67	12/18/09	SET 1" COPPER PLUG, MARKED "OBEC", FLUSH IN TOP OF CURB
3009	263019.79	4269776.96	12/18/09	SET 5/8" X 30" LONG REBAR WITH AN OPC MARKED " OBEC LS 65452"
3010	263023.16	4269679.15	12/18/09	SET 5/8" X 30" LONG REBAR WITH AN OPC MARKED " OBEC LS 65452"
3011	263074.16	4269681.55	12/18/09	SET 1" COPPER PLUG, MARKED "OBEC", FLUSH IN TOP OF CURB

OPC = ORANGE PLASTIC CAP



RECOVERED MONUMENT LIST

PT. NO.	LDP NORTHING	LDP EASTING	DATE	DESCRIPTION & REFERENCE DOCUMENTS
1015	263056.30	4269420.35	9/1/09	FD BOLT, DOWN 0.3', PER CS 1901
1016	263048.34	4269724.69	9/1/09	FD 2-1/2" ALUMINUM DISK IN CONC STAMPED "LS 1913", FLUSH, PER CS 17814
1017	263078.29	4269725.56	9/1/09	FD 2-1/2" ALUMINUM DISK IN CONC STAMPED "LS 1913", FLUSH, PER CS 17814
1018	263013.27	4271069.88	9/1/09	FD 2-1/2" BRASS DISK IN CONC, CAP WAS ILLEGIBLE, DOWN 0.2', NE DLC 64/NW DLC 63

FD = FOUND  
CS = COUNTY SURVEY

ENGLISH

REGISTERED PROFESSIONAL LAND SURVEYOR

*Logan Miles*

OREGON  
JULY 12, 2005  
LOGAN MILES  
65452

RENEWAL: DEC. 31, 2010

**QSEC CONSULTING ENGINEERS**  
www.qsec.com

Corporate Office: 920 COUNTRY CLUB ROAD, SUITE 100B EUGENE, OREGON 97401-6089, 541-683-6090  
2235 MISSION STREET SE, SUITE 100 SALEM, OREGON 97302-1295, 503-589-4100  
831 O'HARE PARKWAY MEDFORD, OREGON 97504-4005, 541-774-5590  
5005 SW MEADOWS ROAD, SUITE 120 LAKE OSWEGO, OREGON 97035, 503-620-6103

OREGON DEPARTMENT OF TRANSPORTATION

RE-MONUMENTATION SURVEY  
JACKSON COUNTY ROADS: PAVEMENT RESURFACING  
(BEALL LANE) JACKSON COUNTY

ODOT REGION 3  
3500 NW STEWART PARKWAY  
ROSEBURG, OR. 97470

DECEMBER, 2009  
SCALE 1" = 100'  
SHEET 8 OF 10

DESIGNED: Logan Miles  
DRAWN: Logan Miles  
CHK'D: W. DONOVAN

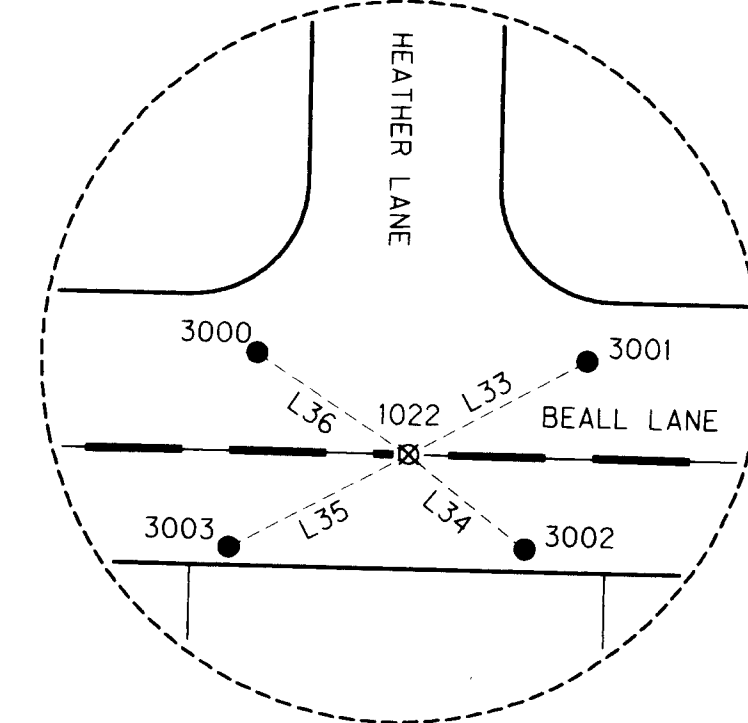
PROJ. NO. 019-084.46



SW 1/4 SEC 11 T37S R2W WM  
SE 1/4 SEC 11 T37S R2W WM

REFERENCE POINTS LINE TABLE

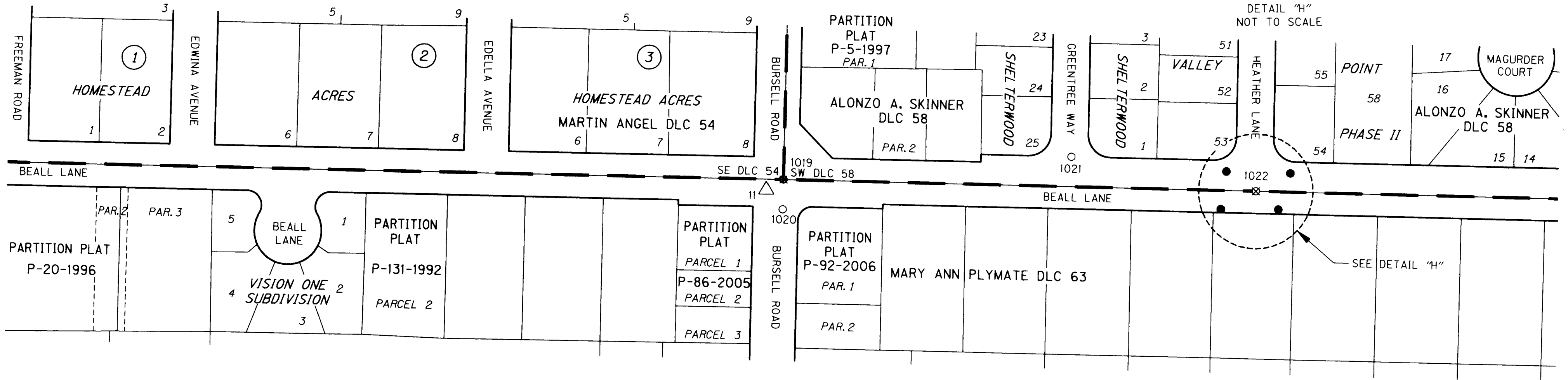
LINE NO.	BEARING	DISTANCE
L33	S 62°59'45" W	52.25
L34	N 50°31'29" W	38.90
L35	N 63°19'33" E	52.62
L36	S 55°53'01" E	47.38



RECEIVED  
DATE 1-15-10 BY *EB*  
This survey consists of:  
.10 sheet(s) Map  
.0 page(s) Narrative  
JACKSON COUNTY SURVEYOR

SEE SHEET 8

SEE SHEET 10

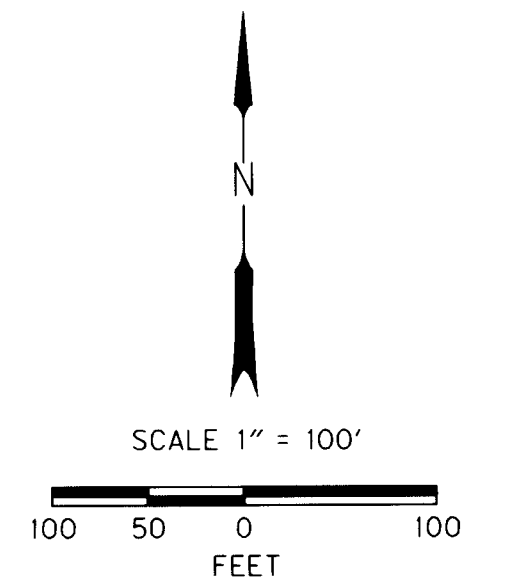


SET MONUMENTS TABLE

OPC = ORANGE PLASTIC CAP

PT. NO.	LDP NORTHING	LDP EASTING	DATE	DESCRIPTION
3000	262987.84	4272818.53	12/18/09	SET 1" COPPER PLUG, MARKED "OBEC", FLUSH IN TOP OF CURB
3001	262985.00	4272904.31	12/18/09	SET 1" COPPER PLUG, MARKED "OBEC", FLUSH IN TOP OF CURB
3002	262936.54	4272887.78	12/18/09	SET 5/8" X 30" LONG REBAR WITH AN OPC MARKED "OBEC LS 65452"
3003	262937.65	4272810.74	12/18/09	SET 5/8" X 30" LONG REBAR WITH AN OPC MARKED "OBEC LS 65452"

LEGEND	
○	FOUND MONUMENT NOTED IN TABLE - PER CS 20536
⊗	FOUND MONUMENT - PER CS 20536 THAT HAS BEEN PAVED OVER, NOTED IN TABLE
⊗	FOUND GOVERNMENT MONUMENT - PER CS 20536 THAT HAS BEEN PAVED OVER NOTED IN TABLE REFERENCE POINTS ESTABLISHED BY COUNTY SURVEYOR'S OFFICE
●	SET REFERENCE POINT TO ORIGINAL MONUMENT AS NOTED IN SET MONUMENT TABLE
△	FOUND NETWORK POINT - PER CS 20536
—	APPROXIMATE RIGHT-OF-WAY
—	APPROXIMATE PROPERTY LINE



RECOVERED MONUMENT LIST

PT. NO.	LDP NORTHING	LDP EASTING	DATE	DESCRIPTION & REFERENCE DOCUMENTS
1019	262980.21	4272223.26	9/1/09	FD 2-1/2" BRASS DISK IN CONC, STAMPED "JACKSON COUNTY 1976, T37S R2W, 54, 58, 63", DOWN 0.16' IN MONUMENT BOX
1020	262940.21	4272222.18	9/1/09	FD 5/8" IRON ROD, DOWN 0.3', PER ORIGIN UNKNOWN, RP TO SE DLC 54
1021	263008.67	4272610.98	9/1/09	FD 2-1/2" BRASS DISK IN CONC STAMPED "FARBER PLS 2189", FLUSH, PER CS 15903
1022	262961.27	4272857.76	9/1/09	FD 2" BRASS DISK IN CONC STAMPED "PLS 2189", FLUSH, PER CS 14396

FD = FOUND  
CS = COUNTY SURVEY

ENGLISH

REGISTERED PROFESSIONAL LAND SURVEYOR

*Logan Miles*

OREGON  
JULY 12, 2005  
LOGAN MILES  
65452

RENEWAL: DEC. 31, 2010

OSECO CONSULTING ENGINEERS  
Corporate Office: 920 COUNTRY CLUB ROAD, SUITE 100B EUGENE, OREGON 97401-6089, 541-683-6090  
2235 MISSION STREET SE, SUITE 100 SALEM, OREGON 97302-1295, 503-589-4100  
831 OHARE PARKWAY MEDFORD, OREGON 97504-4005, 541-774-5590  
5005 SW MEADOWS ROAD, SUITE 120 LAKE OSWEGO, OREGON 97035, 503-620-6103

OREGON DEPARTMENT OF TRANSPORTATION

RE-MONUMENTATION SURVEY  
JACKSON COUNTY ROADS: PAVEMENT RESURFACING  
(BEALL LANE) JACKSON COUNTY

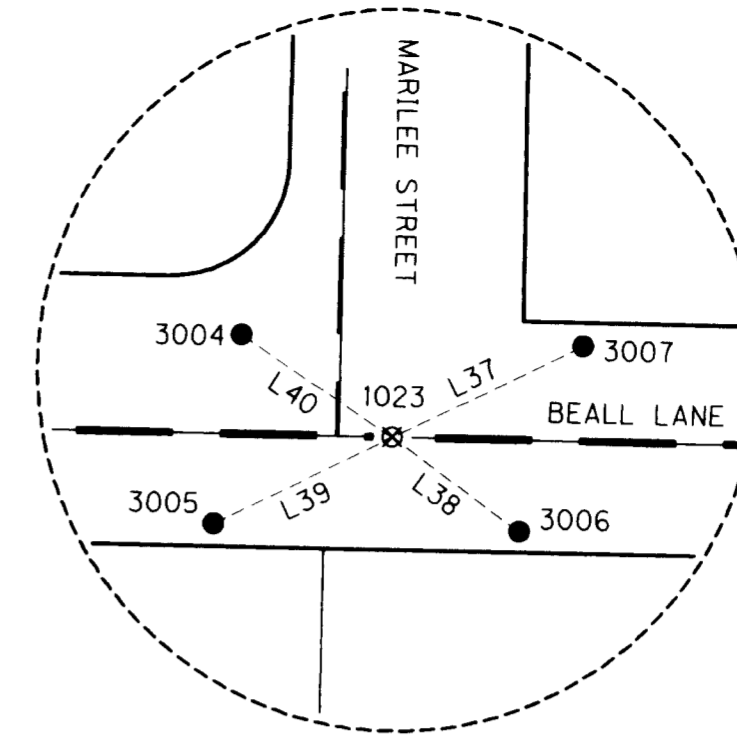
ODOT REGION 3  
3500 NW STEWART PARKWAY  
ROSEBURG, OR. 97470  
DESIGNED: Logan Miles  
DRAWN: Logan Miles

DECEMBER, 2009  
SCALE 1" = 100'  
KEY NO. 16479  
SHEET 9 OF 10  
PROJ. NO. 019-084.46  
CHK'D: W. DONOVAN

SE 1/4 SEC 11 T37S R2W WM  
SW 1/4 SEC 12 T37S R2W WM

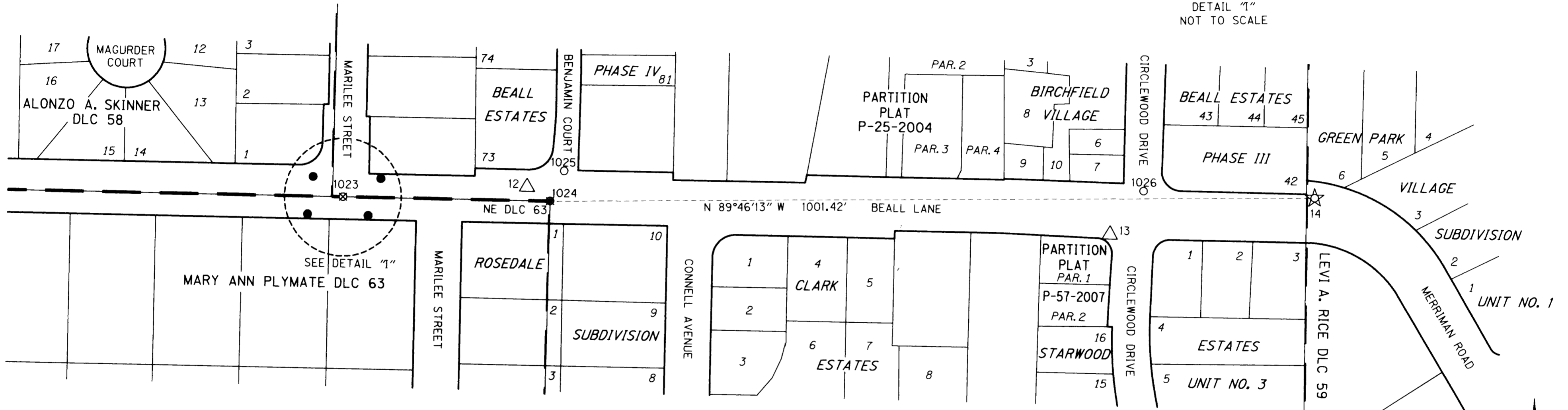
REFERENCE POINTS LINE TABLE

LINE NO.	BEARING	DISTANCE
L37	S 65°07'32" E	54.98
L38	N 52°58'24" W	41.19
L39	N 64°39'07" E	51.50
L40	S 55°22'28" E	47.27



**\*\*RECEIVED\*\***  
DATE: 12-10-09 BY: LB  
This survey consists of:  
10 sheet(s) Map  
2 page(s) Narrative  
JACKSON COUNTY  
SURVEYOR

SEE SHEET 9

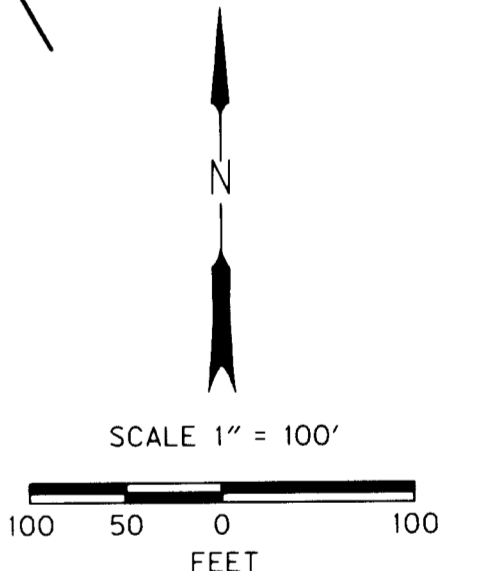


SET MONUMENTS TABLE

PT. NO.	LDP NORTHING	LDP EASTING	DATE	DESCRIPTION
3004	262969.31	4273450.68	12/18/09	SET 1" COPPER PLUG, MARKED "OBEC", FLUSH IN TOP OF CURB
3005	262920.40	4273443.04	12/18/09	SET 5/8" X 30" LONG REBAR WITH AN OPC MARKED "OBEC LS 65452"
3006	262917.64	4273522.47	12/18/09	SET 5/8" X 30" LONG REBAR WITH AN OPC MARKED "OBEC LS 65452"
3007	262965.57	4273539.46	12/18/09	SET 1" COPPER PLUG, MARKED "OBEC", FLUSH IN TOP OF CURB

OPC = ORANGE PLASTIC CAP

LEGEND	
○	FOUND MONUMENT NOTED IN TABLE - PER CS 20536
⊗	FOUND MONUMENT - PER CS 20536 THAT HAS BEEN PAVED OVER, NOTED IN TABLE
⊗	FOUND GOVERNMENT MONUMENT - PER CS 20536 THAT HAS BEEN PAVED OVER NOTED IN TABLE REFERENCE POINTS ESTABLISHED BY COUNTY SURVEYOR'S OFFICE
●	SET REFERENCE POINT TO ORIGINAL MONUMENT AS NOTED IN SET MONUMENT TABLE
△	FOUND NETWORK POINT - PER CS 20536
☆	FOUND GPS NETWORK POINT - PER CS 20536
—	APPROXIMATE RIGHT-OF-WAY
—	APPROXIMATE PROPERTY LINE



FILE NAME: 16479\_Mon Beall.dgn

**OBEC CONSULTING ENGINEERS**  
Corporate Office: 920 COUNTRY CLUB ROAD, SUITE 100B EUGENE, OREGON 97401-6089, 541-683-6090  
2235 MISSION STREET SE, SUITE 100 SALEM, OREGON 97302-1295, 503-589-4100  
831 O'HARE PARKWAY MEDFORD, OREGON 97504-4005, 541-774-5590  
5005 SW MEADOWS ROAD, SUITE 120 LAKE OSWEGO, OREGON 97035, 503-620-6103  
www.obec.com

OREGON DEPARTMENT OF TRANSPORTATION

RE-MONUMENTATION SURVEY  
JACKSON COUNTY ROADS: PAVEMENT RESURFACING  
(BEALL LANE) JACKSON COUNTY

ODOT REGION 3  
3500 NW STEWART PARKWAY  
ROSEBURG, OR. 97470  
KEY NO. 16479  
DECEMBER, 2009  
SCALE 1" = 100'  
SHEET 10 OF 10

DESIGNED: Logan Miles  
DRAWN: Logan Miles  
CHK'D: W. DONOVAN  
PROJ. NO. 019-084.46

ENGLISH  
**REGISTERED PROFESSIONAL LAND SURVEYOR**  
*Logan Miles*  
OREGON  
JULY 12, 2005  
LOGAN MILES  
65452  
RENEWAL: DEC. 31, 2010

RECOVERED MONUMENT LIST

PT. NO.	LDP NORTHING	LDP EASTING	DATE	DESCRIPTION & REFERENCE DOCUMENTS
1023	262942.45	4273489.58	9/1/09	FD 2" BRASS DISK IN CONC STAMPED "PLS 2189", FLUSH, PER CS 14361
1024	262934.38	4273760.57	9/1/09	FD 1-1/2" BRASS DISK IN CONC STAMPED "NE DLC 63" REST OF CAP ILLEGIBLE, FLUSH
1025	262973.83	4273779.07	9/1/09	FD 2-1/2" BRASS DISK IN CONC STAMPED "FARBER PLS 2189", FLUSH, PER CS 16554
1026	262941.21	4274538.31	9/1/09	FD 2-1/2" BRASS DISK IN CONC STAMPED "FARBER PLS 2189", FLUSH, PER CS 15892

FD = FOUND  
CS = COUNTY SURVEY