

MAP OF SURVEY

NE 1/4 SEC 3 T36S R1W WM

CITY OF EAGLE POINT, JACKSON COUNTY OREGON

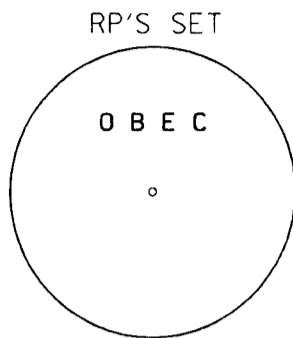
* * RECEIVED * *

DATE 12-21-09 BY BB

This survey consists of:
1 sheet(s) Map
0 page(s) Narrative

JACKSON COUNTY
SURVEYOR

PROJECT LEGEND	
⊗	DESTROYED MONUMENT, RESET MAGNAIL AND WASHER
●	SET 1" COPPER PLUG IN TOP OF CURB, MARKED "OBEC" AS RP TO ORIGINAL MONUMENT LOCATION



NARRATIVE

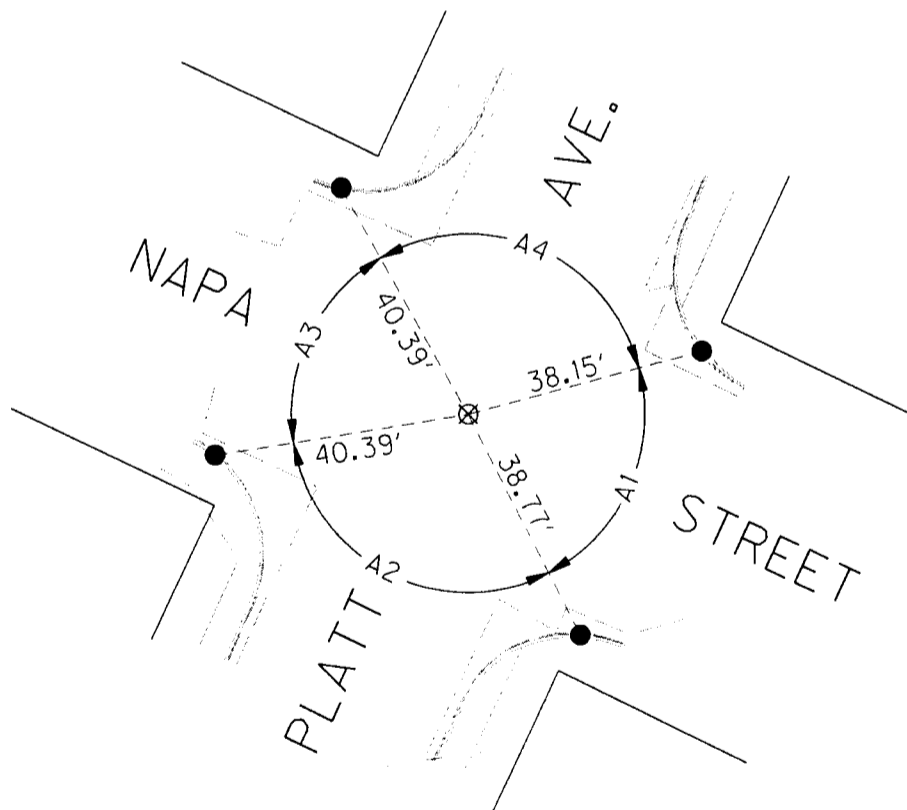
THIS SURVEY WAS MADE AT THE REQUEST OF THE CITY OF EAGLE POINT AND THE OREGON DEPARTMENT OF TRANSPORTATION (ODOT), IN SUPPORT OF A RESURFACING PROJECT FOR THE CITY OF EAGLE POINT.

THE PURPOSE OF THIS SURVEY IS TO RE-ESTABLISH THE LOCATION OF A FOUND 5/8-INCH DIAMETER REBAR PER JACKSON COUNTY SURVEY NUMBER 2079. THE MONUMENT WAS COVERED WITH ASPHALT DURING A RESURFACING PROJECT. DURING THIS SURVEY FOUR REFERENCE POINTS WERE SET TO THE ORIGINAL POSITION OF THE MONUMENT AS SHOWN HEREON AND THE ORIGINAL CORNER LOCATION WAS SET WITH A MAGNAIL AND WASHER IN ORDER TO PERPETUATE THE ORIGINAL CORNER LOCATION.

THIS SURVEY WAS PERFORMED IN NOVEMBER OF 2009. THE SURVEY EQUIPMENT CONSISTED OF ONE TRIMBLE S6 ROBOTIC TOTAL STATION AND ONE TRIMBLE TSC2 DATA COLLECTOR.

REFERENCES

JACKSON COUNTY SURVEY NUMBER 2079.



ANGLES TABLES

ANGLE #	TURNED ANGLE
A1	77° 46' 32"
A2	108° 05' 01"
A3	69° 14' 58"
A4	104° 53' 29"

REGISTERED
PROFESSIONAL
LAND SURVEYOR

Logan Miles
OREGON
JULY 12, 2005
LOGAN MILES
65452

RENEWAL: DEC. 31, 2010

ODOT REGION 3
KEY NO. 16479
JOB NO. 19-84.46
CITY OF EAGLE POINT



Corporate Office: 920 COUNTRY CLUB ROAD, SUITE 100B EUGENE, OREGON 97401-6089, 541-683-6090
 2235 MISSION STREET SE, SUITE 100 SALEM, OREGON 97302-1295, 503-589-4100
 831 O'HARE PARKWAY MEDFORD, OREGON 97504-4005, 541-774-5590
 5005 SW MEADOWS ROAD, SUITE 120 LAKE OSWEGO, OREGON 97035, 503-620-6103

DECEMBER, 2009
SCALE 1"=30'
SHEET 1 OF 1