

**SURVEY FOR: COAST RANGE RESOURCES LIMITED PARTNERSHIP**

**THE EAST HALF OF THE NORTH LINE SECTION 2 T. 34 S. R. 4 W., W.M. & THE SOUTH LINE OF SECTION 36 T. 33 S. R. 4 W. W.M.**

**JACKSON COUNTY, OREGON**

**SURVEYED BY: LONE ROCK TIMBER MANAGEMENT CO.**

**P. O. BOX 1127 ROSEBURG, OREGON 97470 NOVEMBER 2009**

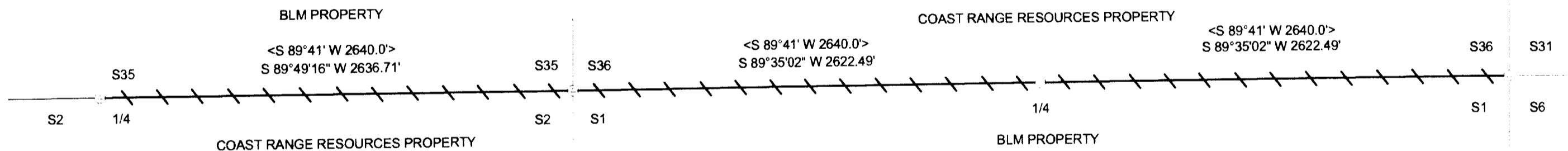
**TRACT: M33 - 4W - 36**

**NARRATIVE:**

THIS SURVEY WAS CONDUCTED TO ESTABLISH PROPERTY CORNERS AND PROPERTY LINES FOR TIMBER HARVESTING OPERATIONS. WE INITIATED THIS SURVEY AT THE SOUTHEAST CORNER OF SECTION 36 A BLM BCIP SET FROM ORIGINAL EVIDENCE RUNNING A CLOSED LOOP RANDOM TRAVERSE WESTERLY TO THE TOP OF THE RIDGE ON A ROAD WHERE WE ESTABLISHED A GPS CONTROL POINT. WE THEN CONTINUED OUR SURVEY WESTERLY THRU THE SOUTHWEST CORNER OF SECTION 36 AND THE NORTH QUARTER OF SECTION 2 WHICH ARE RESPECTIVELY BLM AND GLO BCIP'S SET FROM ORIGINAL EVIDENCE. WE CONTINUED OUR SURVEY NORTHWESTERLY TO ANOTHER GPS CONTROL POINT ON THE 33-4-35.3 ROAD AND WE ESTABLISHED A GPS CONTROL POINT NEAR THE BATTLE MOUNTAIN ROCK PIT, WHICH WE TIED IN ACROSS THE CANYON FROM A TRAVERSE POINT NEAR THE SOUTHWEST CORNER OF SECTION 36. WE SEARCHED FOR ORIGINAL EVIDENCE FOR THE SOUTH 1/4 OF SECTION 36 AND DID NOT FIND CONCLUSIVE EVIDENCE TO SET THIS CORNER FROM ORIGINAL RECORD. WE PROPORTIONED AND SET THE SOUTH 1/4 OF SECTION 36 ACCORDING TO THE BLM MANUAL OF SURVEY INSTRUCTIONS BY PROPORTION. WE MARKED THE PROPERTY LINES SHOWN ON THE MAP BY FLAGGING, BLAZING, PAINTING AND ALUMINUM OFFSET TAGS THROUGH THE TIMBER. THE SURVEY WAS DONE WITH A NIKON DTM 522 TOTAL STATION WITH GARY ANGIOLET AND IGNACIO ROMAN ASSISTING ME.

NORTH QUARTER CORNER FOR SECTION 2  
 FOUND BADLY BENT 1952 GLO BRASS CAP  
 -- 26" DOUGLAS FIR STUMP BEARS N50°W 124.5 FEET (RECORD N52°W 125.0 FEET)  
 HEALED FACE AND TAG  
 -- 28" DOUGLAS FIR BEARS S63 1/4°E 39.1 FEET (RECORD S65 1/2°E 43.8 FEET)  
 HEALED FACE AND TAG  
 -- 30" MADRONE BEARS S3 1/2°W 14.5 FEET (RECORD S2°E 13.2 FEET)  
 NO FACE AND TAG  
 -- 12" CEDAR AT S74°W 10.56 IS DOWN DID NOT MEASURE.  
 CORNER FALLS AT HEAD OF STEEP ROCKY DRAW. THE CORNER HAS BEEN BADLY BENT BY FALLING ROCKS IN CREEK.

SOUTH QUARTER CORNER FOR SECTION 36  
 SET 5/8" X 40" IRON ROD WITH 2 1/2" ALUMINUM CAP MARKED LONE ROCK TIMBER  
 T33S R4W S36 T34S R4W S1 2009 PLS 2291  
 -- 15" DOUGLAS FIR BEARS S65 3/4°E 55.4 FEET WE SCRIBE T34S R4W S1 BT AND TAG  
 -- 8" CEDAR BEARS N16 1/4°W 17.6 FEET WE SCRIBE T33S R4W S36 BT AND TAG  
 -- 18" DOUGLAS FIR BEARS S3 1/4°W 50.3 FEET WE SCRIBE T34S R4W S1 BT AND TAG  
 -- 8" CEDAR BEARS N46 3/4°E 30.6 FEET WE SCRIBE T33S R4W S36 BT AND TAG  
 CORNER SITS AT TOP OF EXTREMELY STEEP SOUTH FACING SLOPE OF A DRAW  
 APPROX. 30 FEET NORTH OF MIDDLE OF STREAM BED.



SOUTHWEST SECTION CORNER FOR SECTION 36  
 FOUND 1972 BLM BRASS CAP  
 -- 20" DOUGLAS FIR BEARS N43 1/2°E 43.0 FEET (RECORD N44°E 42.9 FEET)  
 HEALED FACE WE TAG  
 -- 20" MADRONE BEARS N7 3/4°W 31.7 FEET (RECORD N10°W 34.98 FEET)  
 HEALED FACE AND TAG  
 -- 43" SUGAR PINE BEARS N31 1/2°W 50.0 FEET (RECORD N31°W 50.16 FEET)  
 HEALED FACE AND TAG  
 -- 22" OAK BEARS S23°W 21.6 FEET (RECORD S23°W 23.76 FEET)  
 HEALED FACE AND TAG  
 -- 11" OAK BEARS S63 1/4°E 16.2 FEET (RECORD S62°E 17.16 FEET)  
 HEALED FACE AND TAG  
 CORNER LIES ON SOUTH FACING SLOPE LINES EAST AND WEST OF THIS CORNER WERE BLAZED.

SOUTHEAST SECTION CORNER FOR SECTION 36  
 FOUND 1968 BLM BRASS CAP  
 -- CEDAR SNAG BEARS N54 1/2°E 20.9 FEET (RECORD N52°E 21.12 FEET)  
 VISIBLE SCRIBING AND TAG.  
 -- 16" WHITE FIR BEARS N63 1/2°E 23.2 FEET (RECORD N63°E 23.1 FEET)  
 HEALED FACE WE TAG  
 -- 29" DOUGLAS FIR BEARS N29 1/4°W 61.4 FEET (RECORD N30°W 62.04 FEET)  
 HEALED FACE AND TAG  
 -- 30" CEDAR STUMP BEARS S25 1/4°W 34.3 FEET (RECORD S24°W 34.98 FEET)  
 VISIBLE SCRIBING AND TAG  
 -- NEW 14" DOUGLAS FIR BEARS S60 1/4°E 29.9 FEET WE SCRIBE  
 T 34 S R 3 W S6 BT AND TAG  
 CORNER LIES 0.2 FEET ABOVE GROUND ON EAST EDGE OF OF OLD SKID ROAD.

- LEGEND:**
- LINES BLAZED PAINTED AND TAGGED
  - PROJECTED LINES
  - SET 5/8" X 40" IRON ROD WITH 2 1/2" ALUMINUM CAP
  - FOUND MONUMENTS
  - < > - ORIGINAL GLO FIELD NOTES FILED IN JACKSON COUNTY SURVEYORS OFFICE

REGISTERED  
 PROFESSIONAL  
 LAND SURVEYOR

*Ken W. Hoffine*

OREGON  
 JULY 16, 1987  
 KEN W. HOFFINE  
 PLS 2291

EXPIRES 6-30-11



**\*\* RECEIVED \*\***

Date *12-7-09* By *BB*

This survey consists of:  
 / sheet(s) Map  
 0 page(s) Narrative

JACKSON COUNTY  
 SURVEYOR