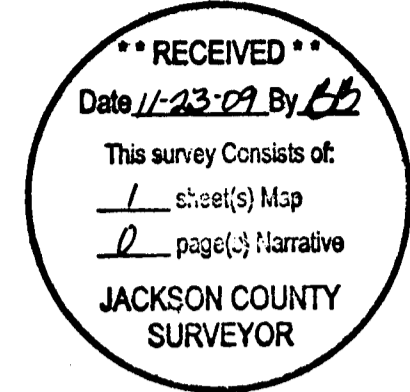


MAP OF SURVEY

LOCATED IN:
BLOCK 2 OF THE 1979 MAP OF ASHLAND, IN
THE NW 1/4 OF SECTION 9, T.39S., R.1E., W.M.
CITY OF ASHLAND, JACKSON COUNTY, OREGON.

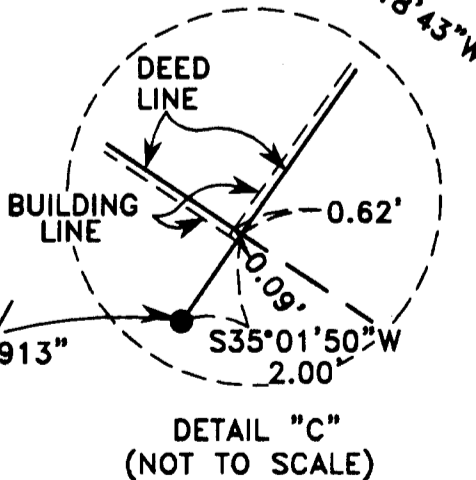
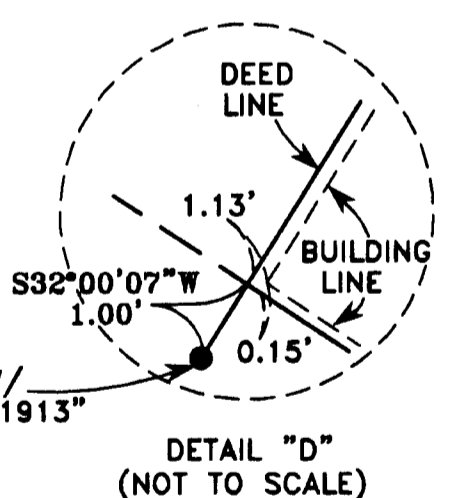
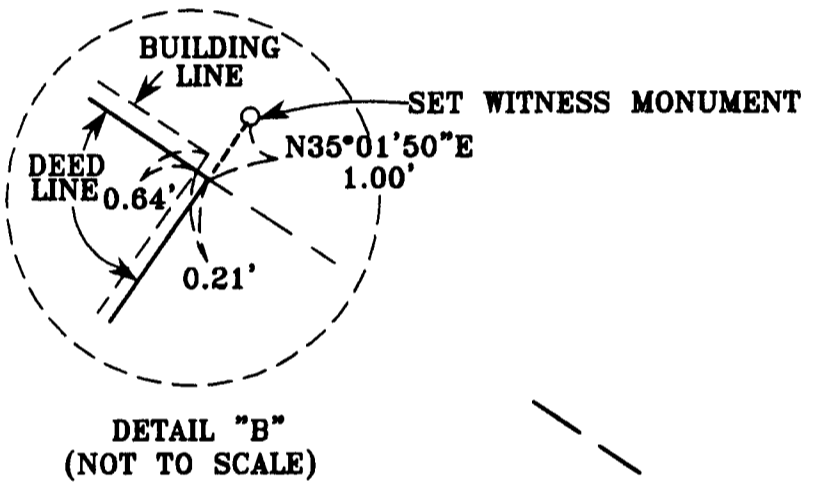
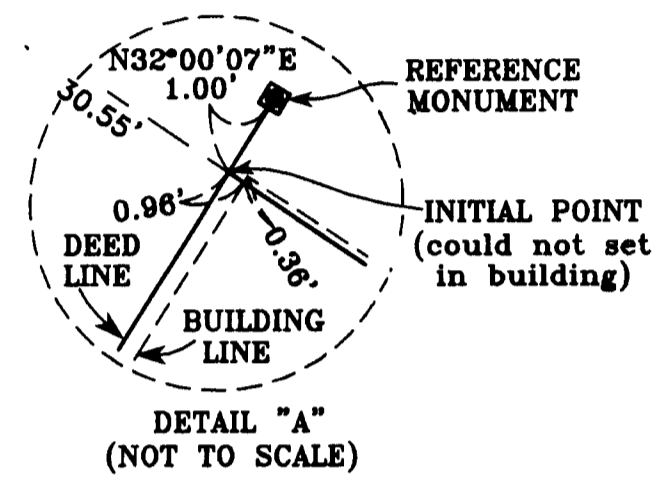
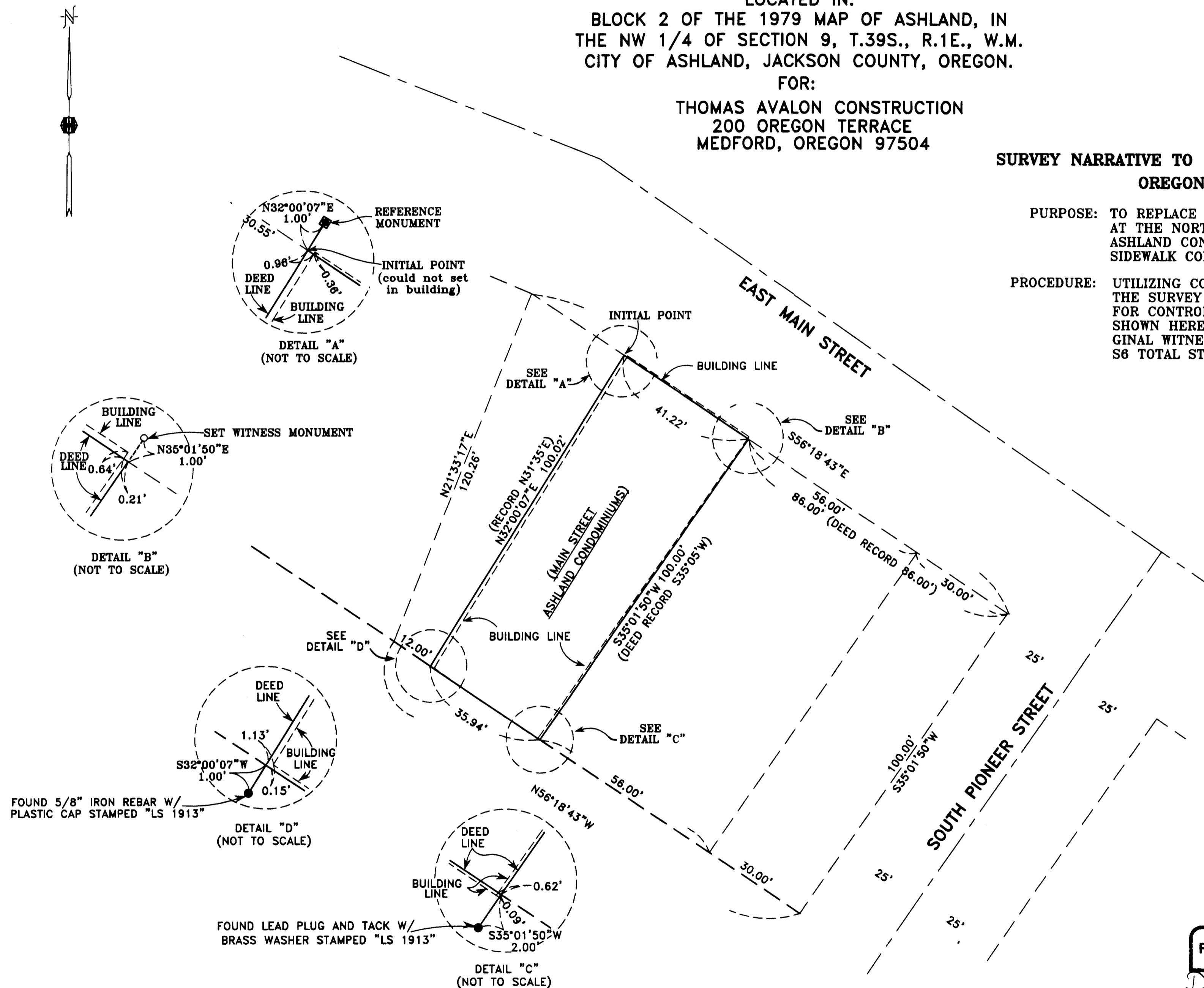
FOR:
THOMAS AVALON CONSTRUCTION
200 OREGON TERRACE
MEDFORD, OREGON 97504



SURVEY NARRATIVE TO COMPLY WITH PARAGRAPH 209.250 OREGON REVISED STATUTES

PURPOSE: TO REPLACE THE WITNESS CORNER MONUMENT LOCATED AT THE NORTHWESTERLY CORNER OF THE MAIN STREET ASHLAND CONDOMINIUMS, WHICH WAS REMOVED DURING SIDEWALK CONSTRUCTION, AND FILE A MAP OF SURVEY.

PROCEDURE: UTILIZING CONTROL ESTABLISHED BY THIS OFFICE FOR THE SURVEY OF MAIN STREET ASHLAND CONDOMINIUMS FOR CONTROL, I ESTABLISHED A NEW MONUMENT AS SHOWN HEREON, IN THE SAME LOCATION AS THE ORIGINAL WITNESS MONUMENT. AN ELECTRONIC TRIMBLE S8 TOTAL STATION WAS USED FOR ALL MEASUREMENTS.



HOFFBUHR & ASSOCIATES, INC.
880 GOLF VIEW DRIVE #201 MEDFORD, OREGON
(541)779-4641 97504
BY: DOUGLAS C. McMAHAN PLS No. 1913
SCALE: 1" = 20' DATE: NOVEMBER 17, 2009
BASIS OF BEARING: MAIN STREET ASHLAND CONDOMINIUMS

- = SET LEAD PLUG AND TACK WITH WASHER STAMPED "LS 1913"
- ⊗ = FOUND 2 1/2" BRASS DISC FLUSH STAMPED "INITIAL POINT REFERENCE MONUMENT FOR MAIN STREET ASHLAND CONDOMINIUMS LS 1913"
- = FOUND MONUMENT PER MAIN STREET ASHLAND CONDOMINIUMS.



RENEWS 12/31/10