

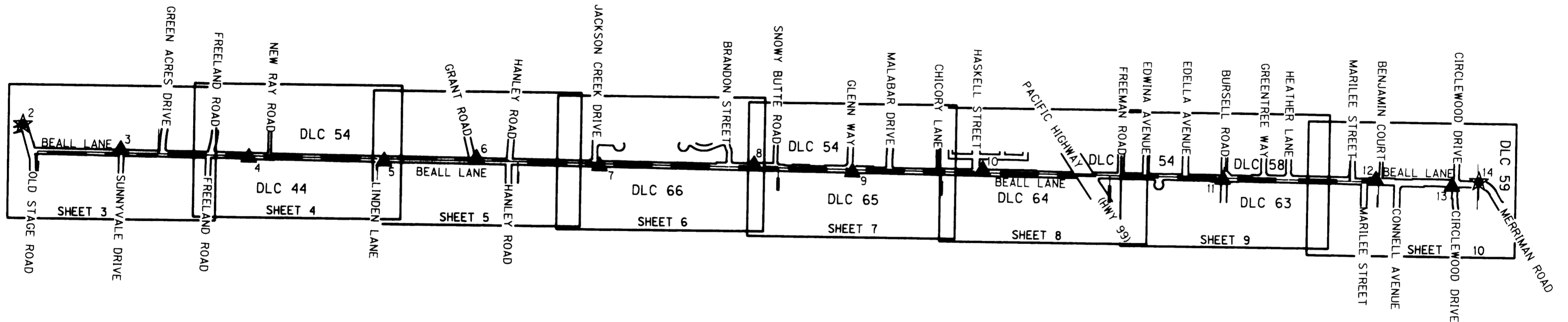
SHEET INDEX

1. SHEET LAYOUT AND NARRATIVE
2. CONTROL NETWORK AND BASIS OF BEARING
- 3-10. RECOVERY SURVEY

SE 1/4 SEC 9 T37S R2W WM
 SW 1/4 SEC 9 T37S R2W WM
 SE 1/4 SEC 10 T37S R2W WM
 SW 1/4 SEC 10 T37S R2W WM
 SE 1/4 SEC 11 T37S R2W WM
 SW 1/4 SEC 11 T37S R2W WM
 SW 1/4 SEC 12 T37S R2W WM

*** RECEIVED ***
 DATE 11-17-09 BY *eb*
 This survey consists of:
 10 sheet(s) Map
 D page(s) Narrative
 JACKSON COUNTY
 SURVEYOR

SHEET LAYOUT DIAGRAM
 NOT TO SCALE



NARRATIVE

THE PURPOSE OF THIS SURVEY IS TO PERPETUATE THE POSITIONS OF ANY EXISTING SURVEY MONUMENTS OF RECORD THAT LIE WITHIN THE PROJECT AREA IN SUPPORT OF A PAVEMENT OVERLAY PROJECT ALONG BEALL LANE. THIS WAS ACCOMPLISHED BY TYING THE FOUND MONUMENTS TO THE PROJECT CONTROL NETWORK. THE PROJECT AREA IS ALL THE PAVED AREA OF BEALL LANE FROM OLD STAGE ROAD TO MERRIMAN ROAD LOCATED IN JACKSON COUNTY, OREGON. THIS SURVEY WAS MADE AT THE REQUEST OF JACKSON COUNTY OREGON AND THE OREGON DEPARTMENT OF TRANSPORTATION (ODOT) FOR AN UPCOMING PROJECT IN THE PREVIOUSLY DESCRIBED VICINITY. THIS SURVEY MEETS THE REQUIREMENTS FOR A MONUMENT RECOVERY SURVEY AS OUTLINED IN THE OREGON REVISED STATUTES, CHAPTER 209.155 (1)(a)(b). THIS SURVEY DOES NOT CONSTITUTE A RIGHT-OF-WAY RETRACEMENT SURVEY OR A BOUNDARY SURVEY. THE PROPERTY LINES AND RIGHT-OF-WAY LINES AS SHOWN ON THIS SURVEY ARE APPROXIMATE, AND ARE INTENDED FOR VISUAL REFERENCE PURPOSES ONLY.

THIS SURVEY WAS PERFORMED IN AUGUST - OCTOBER OF 2009. THE SURVEY EQUIPMENT CONSISTED OF TWO TRIMBLE R8 GPS RECEIVERS, ONE TRIMBLE 5700 GPS RECIEVER, ONE TRIMBLE S6 ROBOTIC TOTAL STATION, AND TWO TRIMBLE TSC2 DATA COLLECTORS.

REFERENCES

ALL RECORDS LISTED IN THE RECOVERED MONUMENTS TABLES ON SHEETS 3 - 10 HEREON.



LEGEND	
	SET GPS NETWORK POINT
	SET NETWORK POINT

ENGLISH

REGISTERED
 PROFESSIONAL
 LAND SURVEYOR

OREGON
 JULY 12, 2005
 LOGAN MILES
 65452

RENEWAL: DEC. 31, 2010

Corporate Office: 920 COUNTRY CLUB ROAD, SUITE 100B EUGENE, OREGON 97401-6089, 541-683-6090
 2235 MISSION STREET SE, SUITE 100 SALEM, OREGON 97302-1295, 503-589-4100
 831 O'HARE PARKWAY WEDFORD, OREGON 97504-4005, 541-774-5590
 5005 SW MEADOWS ROAD, SUITE 120 LAKE OSWEGO, OREGON 97035, 503-620-6103
 www.abece.com

OREGON DEPARTMENT OF TRANSPORTATION
 HORIZONTAL CONTROL AND RECOVERY SURVEY
 JACKSON COUNTY ROADS: PAVEMENT RESURFACING
 (BEALL LANE) JACKSON COUNTY

ODOT REGION 3
 3500 NW STEWART PARKWAY
 ROSEBURG, OR. 97470
 KEY NO. 16479

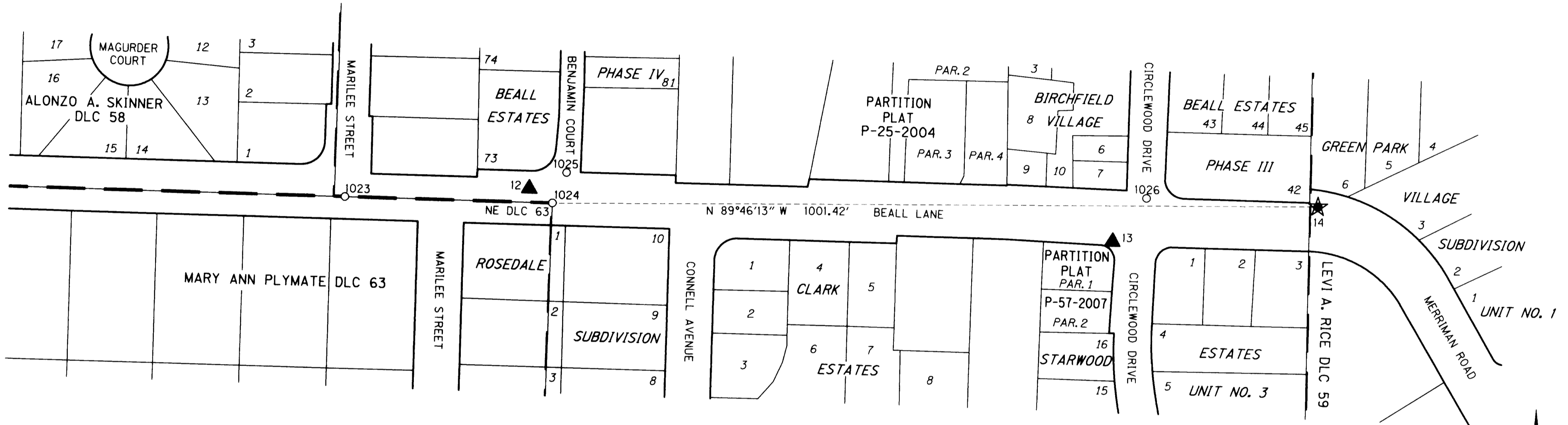
OCTOBER, 2009
 NO SCALE
 SHEET 1 OF 10

J. COLTON	OBEC	DESIGNED: Logan Miles	PROJ. NO. 019-084.46
APPROVED BY: SURVEY GROUP MNGR.		DRAWN: Logan Miles	CHK'D: W. DONOVAN

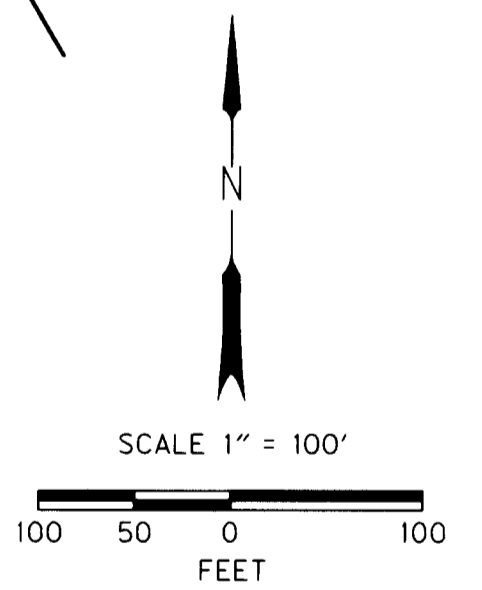
SE 1/4 SEC 11 T37S R2W WM
SW 1/4 SEC 12 T37S R2W WM

RECEIVED
DATE 11-17-09 BY [Signature]
This survey consists of:
.10. sheet(s) Map
.0. page(s) Narrative
JACKSON COUNTY SURVEYOR

SEE SHEET 9



LEGEND	
○	FOUND MONUMENT NOTED IN TABLE
★	SET GPS NETWORK POINT
▲	SET NETWORK POINT
—	APPROXIMATE RIGHT-OF-WAY
—	APPROXIMATE PROPERTY LINE



FILE NAME: 16479_Recovery Beall.dgn

ODOT CONSULTING ENGINEERS
www.odoc.com
Corporate Office: 920 COUNTRY CLUB ROAD, SUITE 100B EUGENE, OREGON 97401-6089, 541-683-6090
2235 MISSION STREET SE, SUITE 100 SALEM, OREGON 97302-1295, 503-589-4100
831 O'HARE PARKWAY MEDFORD, OREGON 97504-4005, 541-774-5590
5005 SW MEADOWS ROAD, SUITE 120 LAKE OSWEGO, OREGON 97035, 503-620-6103

OREGON DEPARTMENT OF TRANSPORTATION
HORIZONTAL CONTROL AND RECOVERY SURVEY
JACKSON COUNTY ROADS: PAVEMENT RESURFACING
(BEALL LANE) JACKSON COUNTY

ODOT REGION 3
3500 NW STEWART PARKWAY
ROSEBURG, OR. 97470
DESIGNED: Logan Miles
DRAWN: Logan Miles
OCTOBER, 2009
SCALE 1" = 100'
KEY NO. 16479
SHEET 10 OF 10
PROJ. NO. 019-084.46
CHK'D: W. DONOVAN

ENGLISH
REGISTERED PROFESSIONAL LAND SURVEYOR
[Signature]
OREGON
JULY 12, 2005
LOGAN MILES
65452
RENEWAL: DEC. 31, 2010

RECOVERED MONUMENT LIST

FD = FOUND
CS = COUNTY SURVEY

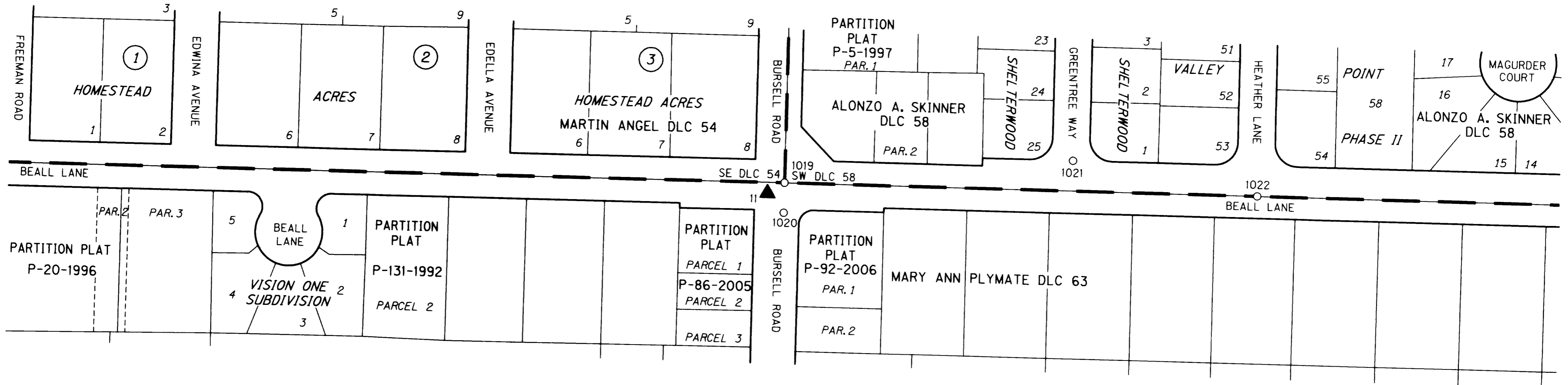
PT. NO.	LDP NORTHING	LDP EASTING	DATE	DESCRIPTION & REFERENCE DOCUMENTS
1023	262942.45	4273489.58	9/1/09	FD 2" BRASS DISK IN CONC STAMPED "PLS 2189", FLUSH, PER CS 14361
1024	262934.38	4273760.57	9/1/09	FD 1-1/2" BRASS DISK IN CONC STAMPED "NE DLC 63" REST OF CAP ILLEGIBLE, FLUSH
1025	262973.83	4273779.07	9/1/09	FD 2-1/2" BRASS DISK IN CONC STAMPED "FARBER PLS 2189", FLUSH, PER CS 16554
1026	262941.21	4274538.31	9/1/09	FD 2-1/2" BRASS DISK IN CONC STAMPED "FARBER PLS 2189", FLUSH, PER CS 15892

SW 1/4 SEC 11 T37S R2W WM
SE 1/4 SEC 11 T37S R2W WM

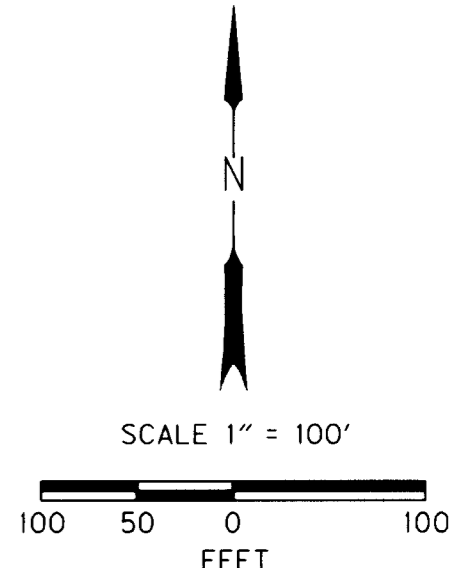
RECEIVED
DATE 11-17-09 BY *db*
This survey consists of:
10 sheet(s) Map
2 page(s) Narrative
JACKSON COUNTY SURVEYOR

SEE SHEET 8

SEE SHEET 10



LEGEND	
○	FOUND MONUMENT NOTED IN TABLE
▲	SET NETWORK POINT
—	APPROXIMATE RIGHT-OF-WAY
—	APPROXIMATE PROPERTY LINE



FILE NAME: 16479_Recovery Beall.dgn

CONSULTING ENGINEERS
 Corporate Office: 920 COUNTRY CLUB ROAD, SUITE 100B EUGENE, OREGON 97401-6089, 541-683-6090
 2235 MISSION STREET SE, SUITE 100 SALEM, OREGON 97302-1295, 503-589-4100
 831 O'HARE PARKWAY MEDFORD, OREGON 97504-4005, 541-774-5590
 5005 SW MEADOWS ROAD, SUITE 120 LAKE OSWEGO, OREGON 97035, 503-620-6103
 www.cbcc.com

ENGLISH
 REGISTERED PROFESSIONAL LAND SURVEYOR
 OREGON
 JULY 12, 2005
 LOGAN MILES
 65452
 RENEWAL: DEC. 31, 2010

OREGON DEPARTMENT OF TRANSPORTATION
 HORIZONTAL CONTROL AND RECOVERY SURVEY
 JACKSON COUNTY ROADS: PAVEMENT RESURFACING
 (BEALL LANE) JACKSON COUNTY

ODOT REGION 3
 3500 NW STEWART PARKWAY
 ROSEBURG, OR. 97470
 KEY NO. 16479
 DESIGNED: Logan Miles
 DRAWN: Logan Miles
 PROJ. NO. 019-084.46
 CHECK'D: W. DONOVAN
 OCTOBER, 2009
 SCALE 1" = 100'
 SHEET 9 OF 10

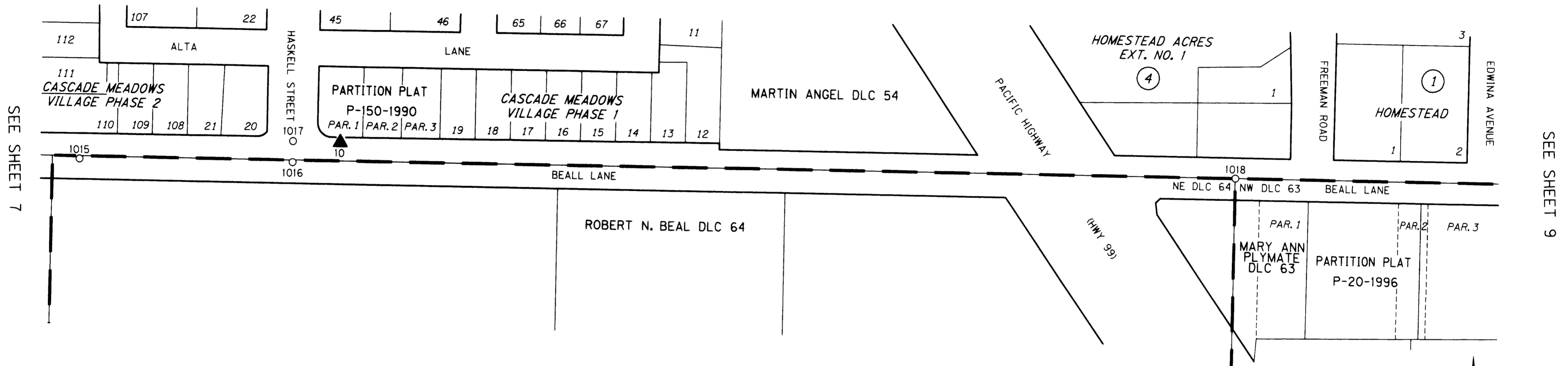
RECOVERED MONUMENT LIST

PT. NO.	LDP NORTHING	LDP EASTING	DATE	DESCRIPTION & REFERENCE DOCUMENTS
1019	262980.21	4272223.26	9/1/09	FD 2-1/2" BRASS DISK IN CONC, STAMPED "JACKSON COUNTY 1976, T37S R2W, 54, 58, 63", DOWN 0.16' IN MONUMENT BOX
1020	262940.21	4272222.18	9/1/09	FD 5/8" IRON ROD, DOWN 0.3', PER ORIGIN UNKNOWN, RP TO SE DLC 54
1021	263008.67	4272610.98	9/1/09	FD 2-1/2" BRASS DISK IN CONC STAMPED "FARBER PLS 2189", FLUSH, PER CS 15903
1022	262961.27	4272857.76	9/1/09	FD 2" BRASS DISK IN CONC STAMPED "PLS 2189", FLUSH, PER CS 14396

FD = FOUND
CS = COUNTY SURVEY

SW 1/4 SEC 11 T37S R2W WM
SE 1/4 SEC 11 T37S R2W WM

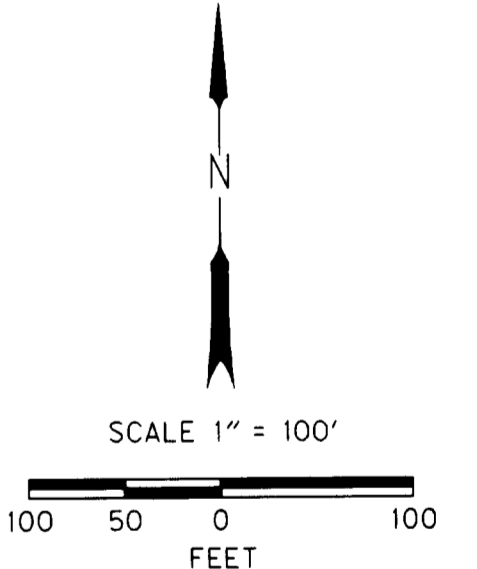
RECEIVED
DATE 11-17-09 BY *bb*
This survey consists of:
10 sheet(s) Map
0 page(s) Narrative
JACKSON COUNTY
SURVEYOR



SEE SHEET 7

SEE SHEET 9

LEGEND	
○	FOUND MONUMENT NOTED IN TABLE
▲	SET NETWORK POINT
—	APPROXIMATE RIGHT-OF-WAY
—	APPROXIMATE PROPERTY LINE



FILE NAME: 16479_Recovery Beall.dgn

CONSULTING ENGINEERS
Corporate Office: 920 COUNTRY CLUB ROAD, SUITE 100B EUGENE, OREGON 97401-6089, 541-683-6090
2235 MISSION STREET SE, SUITE 100 SALEM, OREGON 97302-1295, 503-589-4100
831 O'HARE PARKWAY MEDFORD, OREGON 97504-4005, 541-774-5590
5005 SW MEADOWS ROAD, SUITE 120 LAKE OSWEGO, OREGON 97035, 503-620-6103
www.cbec.com

ENGLISH
REGISTERED PROFESSIONAL LAND SURVEYOR
Logan Miles
OREGON
JULY 12, 2005
LOGAN MILES
65452
RENEWAL: DEC. 31, 2010

OREGON DEPARTMENT OF TRANSPORTATION
HORIZONTAL CONTROL AND RECOVERY SURVEY
JACKSON COUNTY ROADS: PAVEMENT RESURFACING
(BEALL LANE) JACKSON COUNTY
ODOT REGION 3
3500 NW STEWART PARKWAY
ROSEBURG, OR. 97470
KEY NO. 16479
OCTOBER, 2009
SCALE 1" = 100'
SHEET 8 OF 10
DESIGNED: Logan Miles
DRAWN: Logan Miles
CHK'D: W. DONOVAN
PROJ. NO. 019-084.46

RECOVERED MONUMENT LIST

FD = FOUND
CS = COUNTY SURVEY

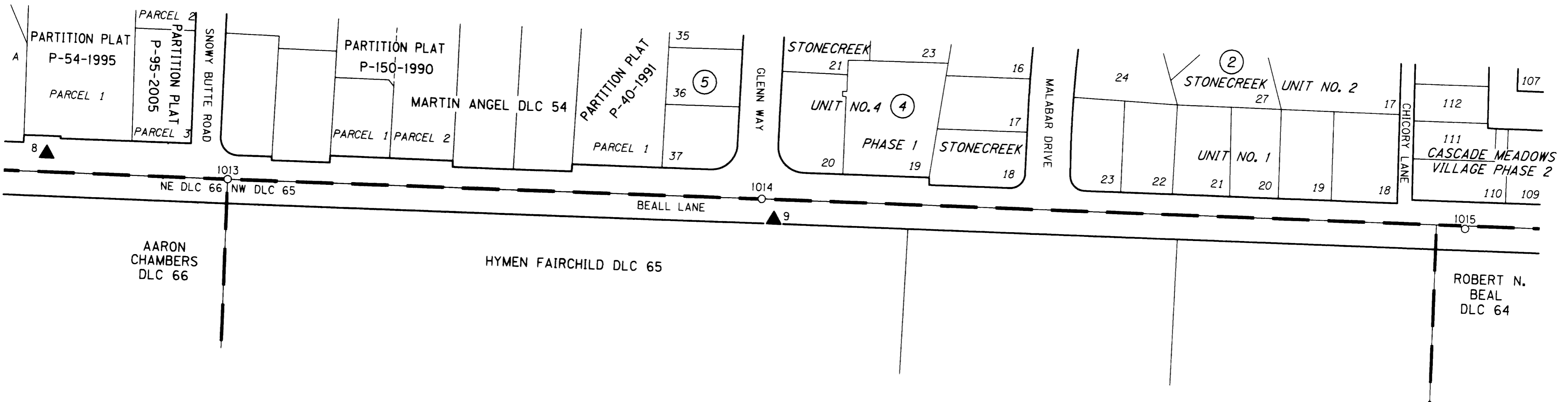
PT. NO.	LDP NORTHING	LDP EASTING	DATE	DESCRIPTION & REFERENCE DOCUMENTS
1015	263056.30	4269420.35	9/1/09	FD BOLT, DOWN 0.3', PER CS 1901
1016	263048.34	4269724.69	9/1/09	FD 2-1/2" ALUMINUM DISK IN CONC STAMPED "LS 1913", FLUSH, PER CS 17814
1017	263078.29	4269725.56	9/1/09	FD 2-1/2" ALUMINUM DISK IN CONC STAMPED "LS 1913", FLUSH, PER CS 17814
1018	263013.27	4271069.88	9/1/09	FD 2-1/2" BRASS DISK IN CONC, CAP WAS ILLEGIBLE, DOWN 0.2', NE DLC 64/NW DLC 63

SE 1/4 SEC 10 T37S R2W WM
SW 1/4 SEC 11 T37S R2W WM

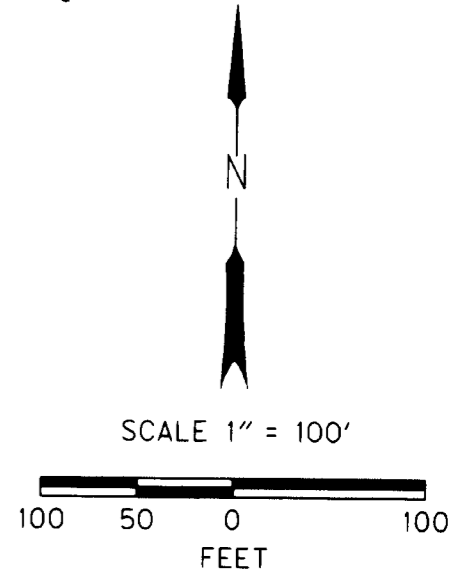
RECEIVED
DATE 11-17-09 BY [Signature]
This survey consists of:
10 sheet(s) Map
2 page(s) Narrative
JACKSON COUNTY SURVEYOR

SEE SHEET 6

SEE SHEET 8



LEGEND	
○	FOUND MONUMENT NOTED IN TABLE
▲	SET NETWORK POINT
---	APPROXIMATE RIGHT-OF-WAY
---	APPROXIMATE PROPERTY LINE



FILE NAME: 16479_Recovery Beall.dgn

CONSULTING ENGINEERS
Corporate Office: 920 COUNTRY CLUB ROAD, SUITE 100B EUGENE, OREGON 97401-6089, 541-683-6090
2235 MISSION STREET SE, SUITE 100 SALEM, OREGON 97302-1295, 503-589-4100
831 O'HARE PARKWAY MEDFORD, OREGON 97504-4005, 541-774-5590
5005 SW MEADOWS ROAD, SUITE 120 LAKE OSWEGO, OREGON 97035, 503-620-6103
www.zbec.com

OREGON DEPARTMENT OF TRANSPORTATION
HORIZONTAL CONTROL AND RECOVERY SURVEY
JACKSON COUNTY ROADS: PAVEMENT RESURFACING
(BEALL LANE) JACKSON COUNTY
ODOT REGION 3
3500 NW STEWART PARKWAY
ROSEBURG, OR. 97470 KEY NO. 16479
OCTOBER, 2009
SCALE 1" = 100'
SHEET 7 OF 10
DESIGNED: Logan Miles
DRAWN: Logan Miles
CHK'D: W. DONOVAN
PROJ. NO. 019-084.46

ENGLISH
REGISTERED PROFESSIONAL LAND SURVEYOR
OREGON
JULY 12, 2005
LOGAN MILES
65452
RENEWAL: DEC. 31, 2010

RECOVERED MONUMENT LIST

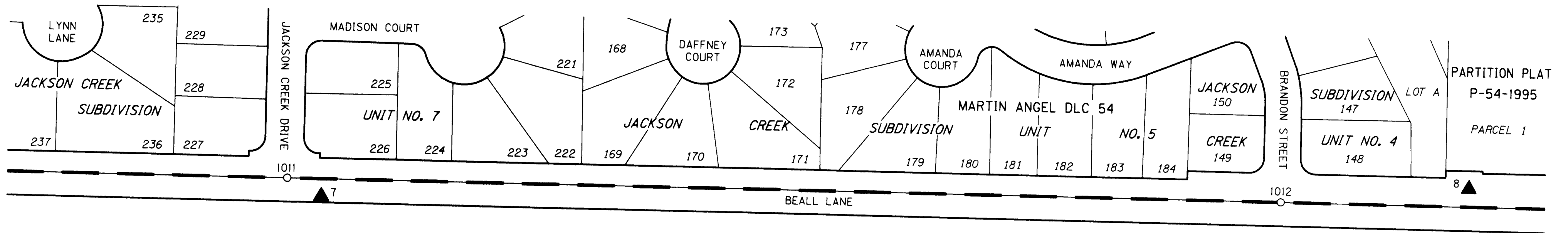
FD = FOUND
CS = COUNTY SURVEY

PT. NO.	LDP NORTHING	LDP EASTING	DATE	DESCRIPTION & REFERENCE DOCUMENTS
1013	263107.83	4267744.52	9/1/09	FD 2-1/2" BRASS DISK IN CONC STAMPED "NE DLC 66" REST OF CAP ILLEGIBLE, DOWN 0.1'
1014	263087.31	4268467.68	9/1/09	FD 2-1/2" BRASS DISK IN CONC STAMPED "LS 2189", DOWN 0.5', PER PER POST MONUMENTATION CS 13879
1015	263056.30	4269420.35	9/1/09	FD BOLT, DOWN 0.3', PER CS 1901

SE 1/4 SEC 10 T37S R2W WM
SW 1/4 SEC 11 T37S R2W WM

**** RECEIVED ****
DATE 11-17-09 BY LL
This survey consists of:
10 sheet(s) Map
0 page(s) Narrative
JACKSON COUNTY
SURVEYOR

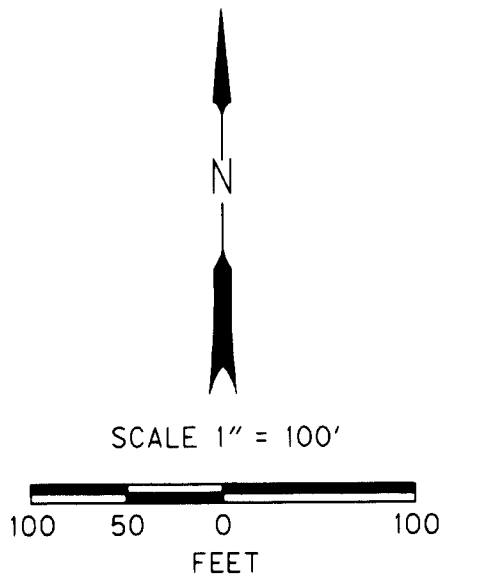
SEE SHEET 5



SEE SHEET 7

AARON CHAMBERS DLC 66

LEGEND	
○	FOUND MONUMENT NOTED IN TABLE
▲	SET NETWORK POINT
—	APPROXIMATE RIGHT-OF-WAY
—	APPROXIMATE PROPERTY LINE



FILE NAME: 16479_Recovery_Beall.dgn

LOGAN MILES CONSULTING ENGINEERS
www.lmce.com
Corporate Office: 920 COUNTRY CLUB ROAD, SUITE 100B EUGENE, OREGON 97401-6089, 541-683-6080
2235 MISSION STREET SE, SUITE 100 SALEM, OREGON 97302-1295, 503-589-4100
831 OHARE PARKWAY WEDFORD, OREGON 97504-4005, 541-774-5590
5005 SW MEADOWS ROAD, SUITE 120 LAKE OSWEGO, OREGON 97035, 503-620-6103

ENGLISH

REGISTERED
PROFESSIONAL
LAND SURVEYOR

Logan Miles
OREGON
JULY 12, 2005
LOGAN MILES
65452
RENEWAL: DEC. 31, 2010

OREGON DEPARTMENT OF TRANSPORTATION
HORIZONTAL CONTROL AND RECOVERY SURVEY
JACKSON COUNTY ROADS: PAVEMENT RESURFACING
(BEALL LANE) JACKSON COUNTY

ODOT REGION 3
3500 NW STEWART PARKWAY
ROSEBURG, OR. 97470
KEY NO. 16479
OCTOBER, 2009
SCALE 1" = 100'
SHEET 6 OF 10

DESIGNED: Logan Miles
DRAWN: Logan Miles
CHK'D: W. DONOVAN
PROJ. NO. 019-084.46

RECOVERED MONUMENT LIST

FD = FOUND
CS = COUNTY SURVEY

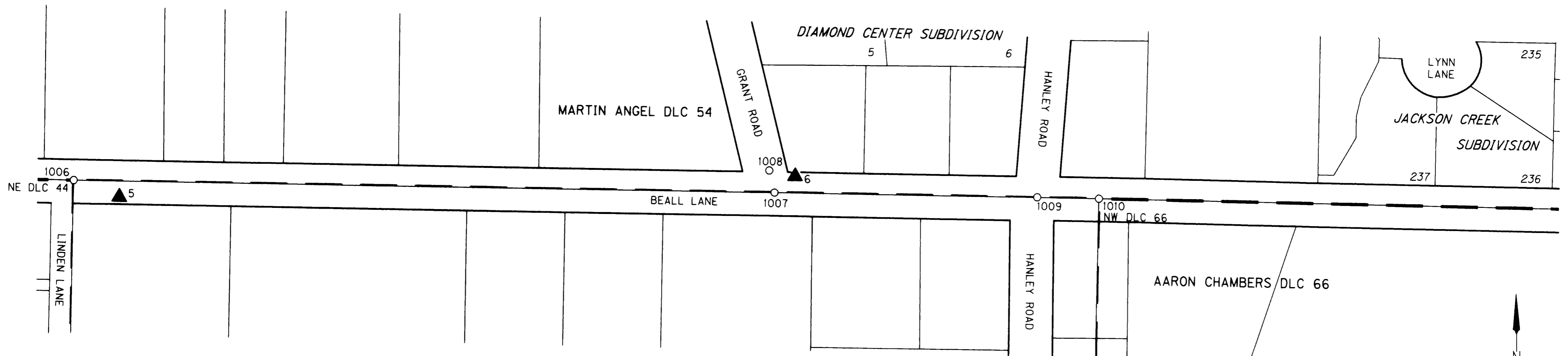
PT. NO.	LDP NORTHING	LDP EASTING	DATE	DESCRIPTION & REFERENCE DOCUMENTS
1011	263165.39	4265900.40	9/1/09	FD 2-1/2" BRASS DISK IN CONC STAMPED "LS 1913", FLUSH, PER POST MONUMENTATION CS 18025
1012	263123.49	4267244.68	9/1/09	FD 2" BRASS DISK IN CONC STAMPED "LS 1913", FLUSH, PER CS 13250

SW 1/4 SEC 10 T37S R2W WM
SE 1/4 SEC 10 T37S R2W WM

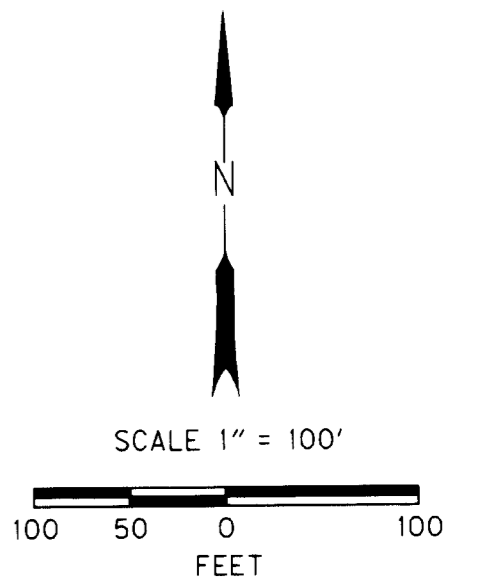
**** RECEIVED ****
DATE: 11-17-09 BY: *LL*
This survey consists of:
10 sheet(s) Map
0 page(s) Narrative
JACKSON COUNTY
SURVEYOR

SEE SHEET 4

SEE SHEET 6



LEGEND	
○	FOUND MONUMENT NOTED IN TABLE
▲	SET NETWORK POINT
---	APPROXIMATE RIGHT-OF-WAY
---	APPROXIMATE PROPERTY LINE



FILE NAME: 16479_Recovery_Beall.dgn

OBEC CONSULTING ENGINEERS
Corporate Office: 920 COUNTRY CLUB ROAD, SUITE 100B EUGENE, OREGON 97401-6089, 541-683-6090
2235 MISSION STREET SE, SUITE 100 SALEM, OREGON 97302-1295, 503-589-4100
831 O'HARE PARKWAY MEDFORD, OREGON 97504-4005, 541-774-5590
5005 SW MEADOWS ROAD, SUITE 120 LAKE OSWEGO, OREGON 97035, 503-620-6103
www.obec.com



REGISTERED
PROFESSIONAL
LAND SURVEYOR

OREGON
JULY 12, 2005
LOGAN MILES
65452
RENEWAL: DEC. 31, 2010

OREGON DEPARTMENT OF TRANSPORTATION
HORIZONTAL CONTROL AND RECOVERY SURVEY
JACKSON COUNTY ROADS: PAVEMENT RESURFACING
(BEALL LANE) JACKSON COUNTY

ODOT REGION 3
3500 NW STEWART PARKWAY
ROSEBURG, OR. 97470
DESIGNED: Logan Miles
DRAWN: Logan Miles
KEY NO. 16479
PRJ. NO. 019-084.46
CHK'D: W. DONOVAN

OCTOBER, 2009
SCALE 1" = 100'
SHEET 5 OF 10

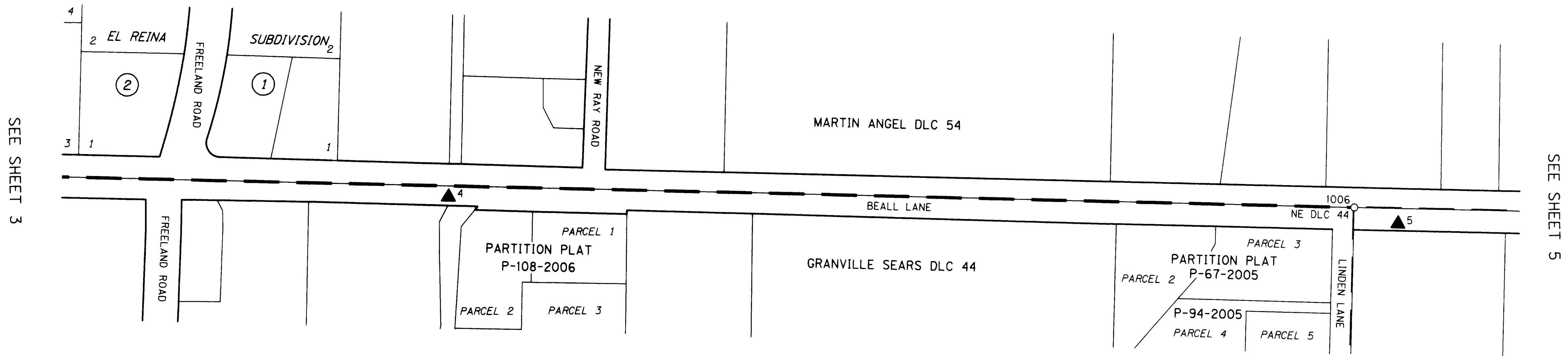
RECOVERED MONUMENT LIST

FD = FOUND
ID = INSIDE DIAMETER
CS = COUNTY SURVEY

PT. NO.	LDP NORTHING	LDP EASTING	DATE	DESCRIPTION & REFERENCE DOCUMENTS
1006	263227.64	4263725.38	9/1/09	FD 2-1/2" BRASS DISK IN CONC, CAP ILLEGIBLE, FLUSH, NE DLC 44
1007	263201.45	4264683.84	9/1/09	FD 1/2" ID IRON PIPE, DOWN 0.9, PER 1910 ROAD SURVEY, SEE CS 18929
1008	263231.66	4264676.87	9/1/09	FD 1-1/2" ALUMINUM CAP W/CENTER PUNCH, FLUSH W/AC, PER CS 18929
1009	263191.97	4265043.72	9/1/09	FD 2-1/2" BRASS DISK IN CONC, DOWN 1.0', JACKSON COUNTY CONTROL MONUMENT 1970
1010	263189.32	4265128.35	9/1/09	FD 2-1/2" BRASS CAP IN CONC, CAP ILLEGIBLE, DOWN 0.18', NW DLC 66

SE 1/4 SEC 9 T37S R2W WM
SW 1/4 SEC 10 T37S R2W WM

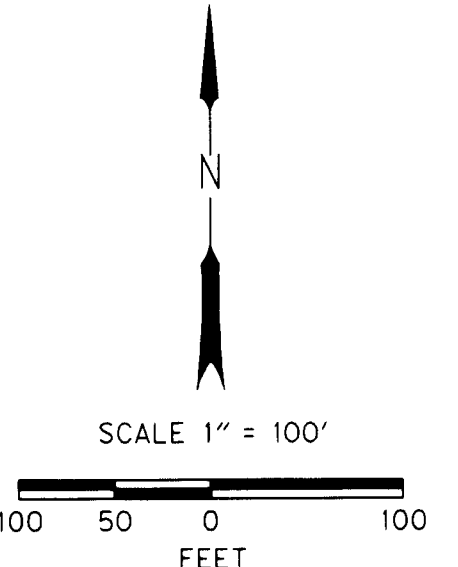
RECEIVED
DATE 11-17-09 BY [Signature]
This survey consists of:
10 sheet(s) Map
0 page(s) Narrative
JACKSON COUNTY
SURVEYOR



SEE SHEET 3

SEE SHEET 5

LEGEND	
○	FOUND MONUMENT NOTED IN TABLE
▲	SET NETWORK POINT
---	APPROXIMATE RIGHT-OF-WAY
---	APPROXIMATE PROPERTY LINE



FILE NAME: 16479_Recovery Beall.dgn

RECOVERED MONUMENT LIST

FD = FOUND

PT. NO.	LDP NORTHING	LDP EASTING	DATE	DESCRIPTION & REFERENCE DOCUMENTS
1006	263227.64	4263725.38	9/1/09	FD 2-1/2" BRASS DISK IN CONC, CAP ILLEGIBLE, FLUSH, NE DLC 44

ENGLISH
REGISTERED PROFESSIONAL LAND SURVEYOR
[Signature]
OREGON
JULY 12, 2005
LOGAN MILES
65452
RENEWAL: DEC. 31, 2010

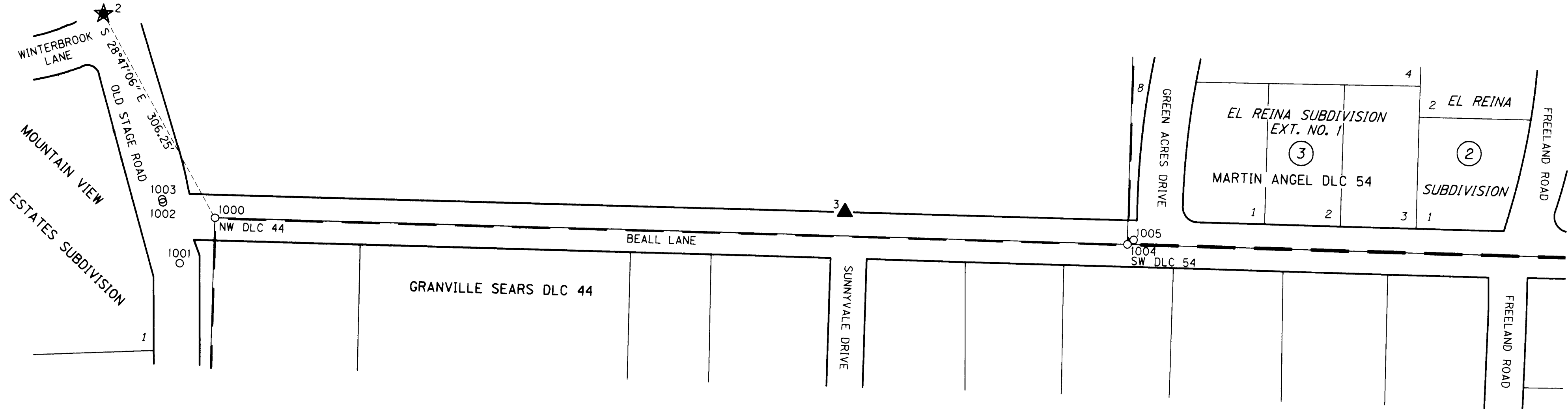
OBEC CONSULTING ENGINEERS
Corporate Office: 920 COUNTRY CLUB ROAD, SUITE 100B EUGENE, OREGON 97401-6089, 541-683-6090
2235 MISSION STREET SE, SUITE 100 SALEM, OREGON 97302-1295, 503-589-4100
831 O'HARE PARKWAY MEDFORD, OREGON 97504-4005, 541-774-5590
5005 SW MEADOWS ROAD, SUITE 120 LAKE OSWEGO, OREGON 97035, 503-620-6103
www.obec.com

OREGON DEPARTMENT OF TRANSPORTATION
HORIZONTAL CONTROL AND RECOVERY SURVEY
JACKSON COUNTY ROADS: PAVEMENT RESURFACING
(BEALL LANE) JACKSON COUNTY

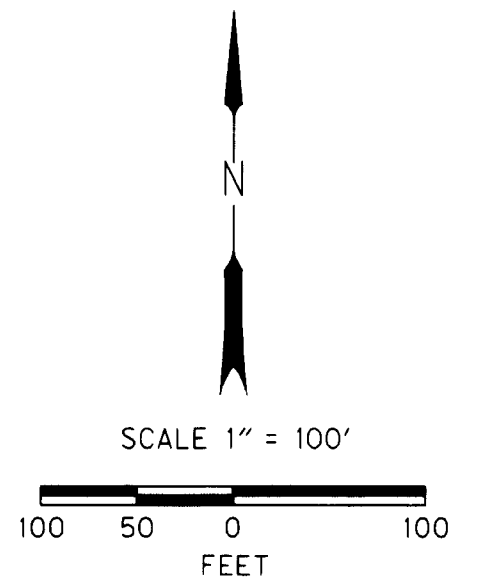
ODOT REGION 3
3500 NW STEWART PARKWAY
ROSEBURG, OR. 97470
DESIGNED: Logan Miles
DRAWN: Logan Miles
OCTOBER, 2009
SCALE 1" = 100'
SHEET 4 OF 10
KEY NO. 16479
PROJ. NO. 019-084.46
CHK'D: W. DONOVAN

SW 1/4 SEC 9 T37S R2W WM
SE 1/4 SEC 9 T37S R2W WM

**** RECEIVED ****
DATE 11-17-09 BY llb
This survey consists of:
- 10 sheet(s) Map
- 0 page(s) Narrative
JACKSON COUNTY
SURVEYOR



LEGEND	
○	FOUND MONUMENT NOTED IN TABLE
★	SET GPS NETWORK POINT
▲	SET NETWORK POINT
—	APPROXIMATE RIGHT-OF-WAY
—	APPROXIMATE PROPERTY LINE



FILE NAME: 16479_Recovery Beall.dgn

RECOVERED MONUMENT LIST

PT. NO.	LDP NORTHING	LDP EASTING	DATE	DESCRIPTION & REFERENCE DOCUMENTS
1000	263327.19	4260317.10	9/1/09	FD 2-1/2" BRASS DISK IN CONC STAMPED "JACKSON COUNTY SURVEYOR, T37S R2W DLC NW 44, 2002 UNLAWFUL TO DISTURB", FLUSH
1001	263267.56	4260270.67	9/1/09	FD 5/8" IRON ROD W/YPC STAMPED "JACKSON COUNTY PKS", FLUSH, PER CS 18283
1002	263347.57	4260248.47	9/1/09	FD 5/8" IRON ROD, CAP MISSING, FLUSH, PER CS 18283
1003	263351.60	4260247.34	9/1/09	FD 5/8" IRON ROD, CAP MISSING, FLUSH, PER CS 18283
1004	263291.99	4261523.79	9/1/09	FD 2-1/2" BRASS DISK IN CONC STAMPED "SW DLC 54", REST OF CAP ILLEGIBLE, FLUSH
1005	263297.71	4261531.94	9/1/09	FD 5/8" IRON ROD, DOWN 0.5', ORIGIN UNKNOWN

FD = FOUND
YPC = YELLOW PLASTIC CAP
CS = COUNTY SURVEY

REGISTERED PROFESSIONAL LAND SURVEYOR
Logan Miles
OREGON
JULY 12, 2005
LOGAN MILES
65452
RENEWAL: DEC. 31, 2010

CONSULTING ENGINEERS
Corporate Office: 920 COUNTRY CLUB ROAD, SUITE 100B EUGENE, OREGON 97401-6089, 541-683-6090
2235 MISSION STREET SE, SUITE 100 SALEM, OREGON 97302-1295, 503-589-4100
831 O'HARE PARKWAY MEDFORD, OREGON 97504-4005, 541-774-5590
5005 SW MEADOWS ROAD, SUITE 120 LAKE OSWEGO, OREGON 97035, 503-620-6103
www.zbec.com

OREGON DEPARTMENT OF TRANSPORTATION
HORIZONTAL CONTROL AND RECOVERY SURVEY
JACKSON COUNTY ROADS: PAVEMENT RESURFACING
(BEALL LANE) JACKSON COUNTY

ODOT REGION 3
3500 NW STEWART PARKWAY
ROSEBURG, OR. 97470
DESIGNED: Logan Miles
DRAWN: Logan Miles
KEY NO. 16479
CHK'D: W. DONOVAN
OCTOBER, 2009
SCALE 1" = 100'
SHEET 3 OF 10
PROJ. NO. 019-084.46

CONTROL NARRATIVE

PROJECT: JACKSON COUNTY ROADS:
PAVEMENT RESURFACING (BEALL LANE)
LOCATION: JACKSON COUNTY
ODOT KEY NUMBER: 16479
OBEC PROJECT: 0019-0084.46
SURVEY DATUM:
HORIZONTAL - NAD83 (CORS96) EPOCH 2002
(INTERNATIONAL FEET)

HORIZONTAL CONTROL SURVEY

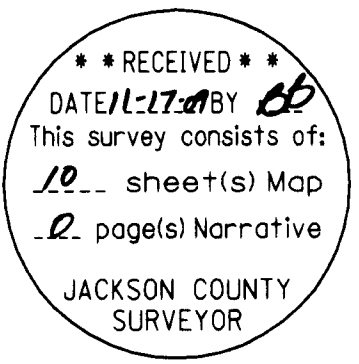
THE PRIMARY HORIZONTAL CONTROL WAS BROUGHT INTO THE PROJECT BY USING AN OPUS-S SOLUTION FOR CORS STATIONS "DDSN, DCSO, & ORK6", THEREBY ESTABLISHING A POSITION ON POINT 1. PRIMARY HORIZONTAL CONTROL WAS BROUGHT INTO THE PROJECT BY USING AN OPUS-RS SOLUTION FOR CORS STATIONS "DDSN, DCSO, ORK6, PTSG, MDMT, CABL, TRND, P170 & LPSB", THEREBY ESTABLISHING POSITIONS ON POINTS 2 AND 14.

A SUBSEQUENT STATIC GPS SURVEY WAS PERFORMED TO ESTABLISH POSITIONS FOR POINTS 3 THROUGH 13. THE COORDINATE SYSTEM WAS HELD AT OREGON STATE PLANE - SOUTH ZONE (3602), UNTIL ALL GPS CONTROL SURVEYING AND ADJUSTMENTS WERE COMPLETE. THEN ALL POINTS WERE MOVED TO GROUND (LOCAL DATUM PLANE COORDINATE SYSTEM). TO CONVERT THE PROJECT LDP COORDINATES TO THE OREGON STATE PLANE COORDINATE SYSTEM - SOUTH ZONE NAD 83(CORS96) EPOCH 2002, MULTIPLY THE COORDINATE VALUES BY A COMBINED FACTOR OF 0.99992976.

2
SET MAGNAIL
W/ WASHER "OBEC CONTROL"
(08/26/09)
LDP PROJECT VALUES
N 263595.60
E 4260169.62
OREGON STATE PLANE
SOUTH ZONE (3602)
N 263577.09
E 4259870.38

1
SET 5/8 " X 30" REBAR
W/ RPC "OBEC CONTROL"
(08/26/09)
LDP PROJECT VALUES
N 273947.90
E 4268729.99
OREGON STATE PLANE
SOUTH ZONE (3602)
N 273928.66
E 4268430.16

SE 1/4 SEC 9 T37S R2W WM
SW 1/4 SEC 9 T37S R2W WM
SE 1/4 SEC 10 T37S R2W WM
SW 1/4 SEC 10 T37S R2W WM
SE 1/4 SEC 11 T37S R2W WM
SW 1/4 SEC 11 T37S R2W WM
SW 1/4 SEC 12 T37S R2W WM



LEGEND

- ★ SET GPS NETWORK POINT
- ▲ SET NETWORK POINT
- ★-▲ LINES OF OBSERVATION (NOT INTERVISIBLE)
- ★-▲ LINES OF OBSERVATION (INTERVISIBLE)

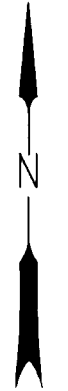
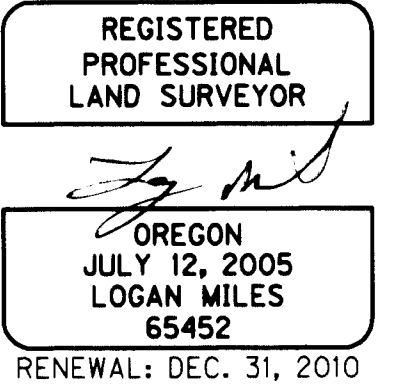
OPUS-S NOTES

OREGON STATE PLANE SOUTH ZONE (3602) COORDINATE VALUE WAS DERIVED ON CONTROL POINT NUMBER 1 USING AN NGS OPUS-S SOLUTION WITH THE FOLLOWING CORS STATIONS BEING HELD: DDSN (DODSON BUTTE), DCSO (ROSEBURG COOP) & ORK6 (KLAMATH FALLS 6)

OPUS-RS NOTES

OREGON STATE PLANE SOUTH ZONE (3602) COORDINATE VALUES WERE DERIVED ON CONTROL POINTS NUMBERED 2 AND 14 USING AN NGS OPUS-RS SOLUTION WITH THE FOLLOWING CORS STATIONS BEING HELD: DDSN (DODSON BUTTE), DCSO (ROSEBURG COOP), ORK6 (KLAMATH FALLS 6), PTSG (POINT ST. GEORGE), MDMT (MEDICINE MOUNTAIN), CABL (CAPE BLANCO), TRND (TRINIDAD HEAD), P170 (BALDMNT_CN2004) & LPSB (LANE CNTY COOP)

14
SET 1" COPPER PLUG
MARKED "OBEC"
(08/26/09)
LDP PROJECT VALUES
N 262930.37
E 4274761.98
OREGON STATE PLANE
SOUTH ZONE (3602)
N 262911.90
E 4274461.72



CONTROL NETWORK SCHEMATIC & BASIS OF BEARING

NOT TO SCALE

FILE NAME: 16479_Recovery Beall.dgn

NETWORK POINT COORDINATE TABLE

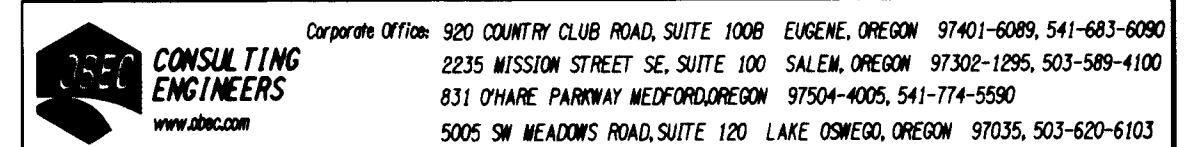
RPC = RED PLASTIC CAP
CONC = CONCRETE

PT. ID.	LDP NORTHING	LDP EASTING	DATE	DESCRIPTION
1	273947.90	4268729.99	8/26/09	SET 5/8" X 30" REBAR W/ RPC STAMPED "OBEC CONTROL"
2	263595.60	4260169.62	8/26/09	SET MAGNAIL & WASHER STAMPED "OBEC CONTROL"
3	263334.33	4261149.68	8/26/09	SET 5/8" X 30" REBAR W/ RPC STAMPED "OBEC CONTROL"
4	263249.74	4262432.66	8/26/09	SET 5/8" X 30" REBAR W/ RPC STAMPED "OBEC CONTROL"
5	263204.25	4263787.75	8/26/09	SET 5/8" X 30" REBAR W/ RPC STAMPED "OBEC CONTROL"
6	263223.39	4264712.30	8/26/09	SET 5/8" X 30" REBAR W/ RPC STAMPED "OBEC CONTROL"
7	263140.34	4265946.15	8/26/09	SET 5/8" X 30" REBAR W/ RPC STAMPED "OBEC CONTROL"
8	263140.30	4267499.06	8/26/09	SET 1" COPPER PLUG, FLUSH IN CONC. STAMPED "OBEC"
9	263059.72	4268484.52	8/26/09	SET 5/8" X 30" REBAR W/ RPC STAMPED "OBEC CONTROL"
10	263075.83	4269792.86	8/26/09	SET 1" COPPER PLUG, FLUSH IN CONC. STAMPED "OBEC"
11	262966.51	4272200.57	8/26/09	SET 5/8" X 30" REBAR W/ RPC STAMPED "OBEC CONTROL"
12	262953.36	4273730.45	8/26/09	SET 5/8" X 30" REBAR W/ RPC STAMPED "OBEC CONTROL"
13	262885.02	4274494.07	8/26/09	SET 1" COPPER PLUG, FLUSH IN CONC. STAMPED "OBEC"
14	262930.37	4274761.98	8/26/09	SET 1" COPPER PLUG, FLUSH IN CONC. STAMPED "OBEC"

1.96 SIGMA (95%) CONFIDENCE LEVEL LIMITS

POINT NO	SEMI MAJOR	SEMI MINOR	ORIENTATION*
3	0.02 INT FT	0.02 INT FT	-169.9°
4	0.02 INT FT	0.02 INT FT	33.4°
5	0.02 INT FT	0.02 INT FT	37.2°
6	0.02 INT FT	0.02 INT FT	38.3°
7	0.02 INT FT	0.02 INT FT	-179.3°
8	0.02 INT FT	0.02 INT FT	8.6°
9	0.02 INT FT	0.02 INT FT	16.4°
10	0.02 INT FT	0.02 INT FT	25.6°
11	0.02 INT FT	0.02 INT FT	32.2°
12	0.02 INT FT	0.02 INT FT	-130.0°
13	0.02 INT FT	0.02 INT FT	-144.4°

* NORTH AZIMUTH
FIXED POINTS NOT SUBJECT TO LEAST SQUARES ADJUSTMENT OR CONFIDENCE LEVEL ANALYSIS: POINTS 1, 2 AND 14



OREGON DEPARTMENT OF TRANSPORTATION
HORIZONTAL CONTROL AND RECOVERY SURVEY
JACKSON COUNTY ROADS: PAVEMENT RESURFACING
(BEALL LANE) JACKSON COUNTY

ODOT REGION 3
3500 NW STEWART PARKWAY
ROSEBURG, OR, 97470
DESIGNED: Logan Miles
DRAWN: Logan Miles
OCTOBER, 2009
NO SCALE
KEY NO. 16479
SHEET 2 OF 10
PROJ. NO. 019-084.46
CHK'D: W. DONOVAN