

Map of Survey

Located In:
SE 1/4 of Section 23, Township 38 South, Range 1 West, W.M.
City of Talent, Jackson County, Oregon

** RECEIVED **

DATE 11-3-09 BY BB
 This survey consists of:
1 sheet(s) Map
0 page(s) Narrative

JACKSON COUNTY
 SURVEYOR

SURVEY NARRATIVE:

PURPOSE:

To re-monument that monument of record per filed survey No. 13555, which was destroyed by a recent roadway re-construction project.

PROCEDURE:

Utilizing existing survey control and position of monument prior to construction, a new monument was set in the same position as the destroyed monument. No judgement was made or is implied as to whether the destroyed monument was in the proper location. Monument was re-set on Oct. 22, 2009.

SURVEY FOR:

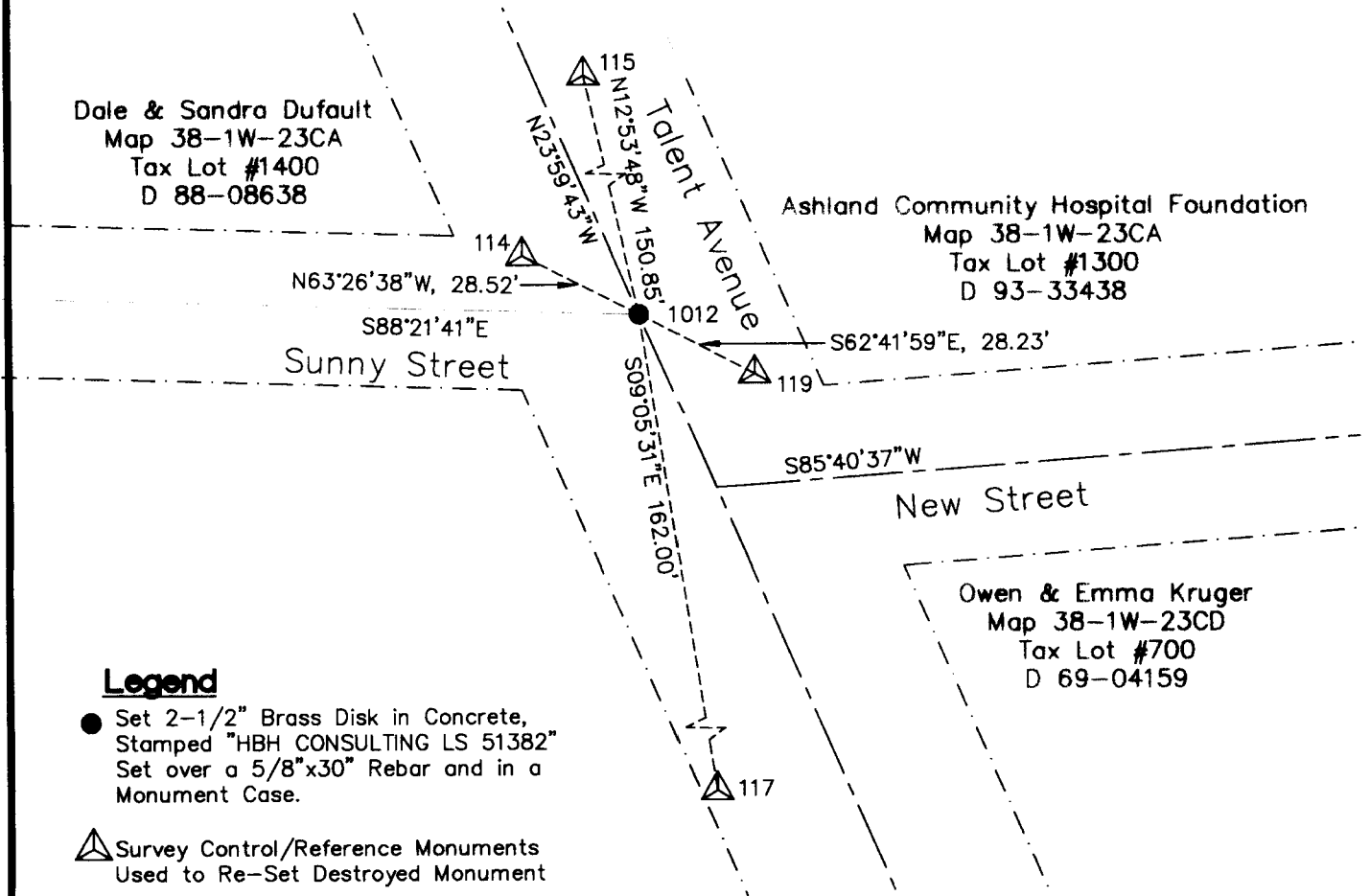
Talent Urban Renewal Agency (TURA)

EQUIPMENT:

Trimble 5600, DR200+ Total Station

BASIS OF BEARING:

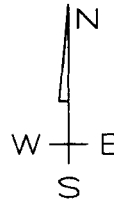
Local Datum Plane, Oregon South
 NAD83, (CORS96), EPOCH 2002



Legend

- Set 2-1/2" Brass Disk in Concrete, Stamped "HBH CONSULTING LS 51382" Set over a 5/8"x30" Rebar and in a Monument Case.
- ▲ Survey Control/Reference Monuments Used to Re-Set Destroyed Monument

Pt No.	Northing	Easting	Description
114	219813.59	4301765.40	Set Mag Nail
115	219947.89	4301757.24	Set Mag Nail
117	219640.68	4301816.54	Scribed "X" in Conc.
119	219787.89	4301816.00	Set Mag Nail
1012	219800.84	4301790.91	Set Brass Disk



T38S, R1W, SE1/4 S23

REGISTERED
 PROFESSIONAL
 LAND SURVEYOR

John R. Pariani

OREGON
 July 13, 1999
 JOHN R. PARIANI
 51382

Renews: December 31, 2010

H B H 4497 Brownridge Terrace
 Medford, Oregon 97503
 Consulting 541/779-5216 fax 541/776-7376
 Engineers email: mail@hbh-consulting.com

Drawn By: TAO	Checked By: JRP	Date: October 30, 2009	Scale: 1"=40'
File: map of survey-talent Ave.dwg			