

SURVEY FOR:
DAVE MYERS
2382 W. MAIN ST., SUITE A
MEDFORD, OR 97501

SURVEY BY:
L.J. FRIAR & ASSOCIATES, P.C.
CONSULTING LAND SURVEYORS
818 WEST EIGHTH STREET
MEDFORD, OREGON 97501
PHONE: (541) 772-2782
EMAIL: L.FRIAR@CHARTER.NET

DATE:
OCTOBER 22, 2009

MAP OF SURVEY

In Government Lot 8 & in the S.W. 1/4 of Section 7,
T.38S., R.1W., W.M.

LEGEND:

- ⊙ = FD. COUNTY SURVEYOR'S BRASS CAPPED MONUMENT PER RE-ESTAB'S.
- = SET 5/8" X 24" IRON PIN W/ PLASTIC CAP MKD. L.J. FRIAR & ASSOC.
- = COMPUTED POINT, NOTHING FOUND OR SET.
- ⊘ = EXISTING POWER POLE.
- OHP- = OVERHEAD POWER LINES.
- ORJCO = OFFICIAL RECORDS OF JACKSON COUNTY, OREGON.
- WC = WITNESS CORNER MONUMENT.
- DR = DEED RECORD DATA.
- FS = FILED SURVEY.
- DLC = DONATION LAND CLAIM.
- X- = FENCE LINE.
- [] = GLO RECORD DATA PER 1858 SURVEY NOTES OF DLC (DISTANCES IN CHAINS).
- [] = GLO RECORD DATA PER 1854 SURVEY NOTES OF TOWNSHIP (DISTANCES IN CHAINS).
- AC = ASPHALT CONCRETE.
- CONC. = CONCRETE.
- L1 = SEE COURSE DATA TABLE.

BASIS OF BEARINGS:

TRUE NORTH AS DERIVED FROM GLOBAL POSITION SYSTEM (GPS) MEASUREMENTS.

UNIT OF MEASUREMENT = FEET

SCALE: 1" = 400'

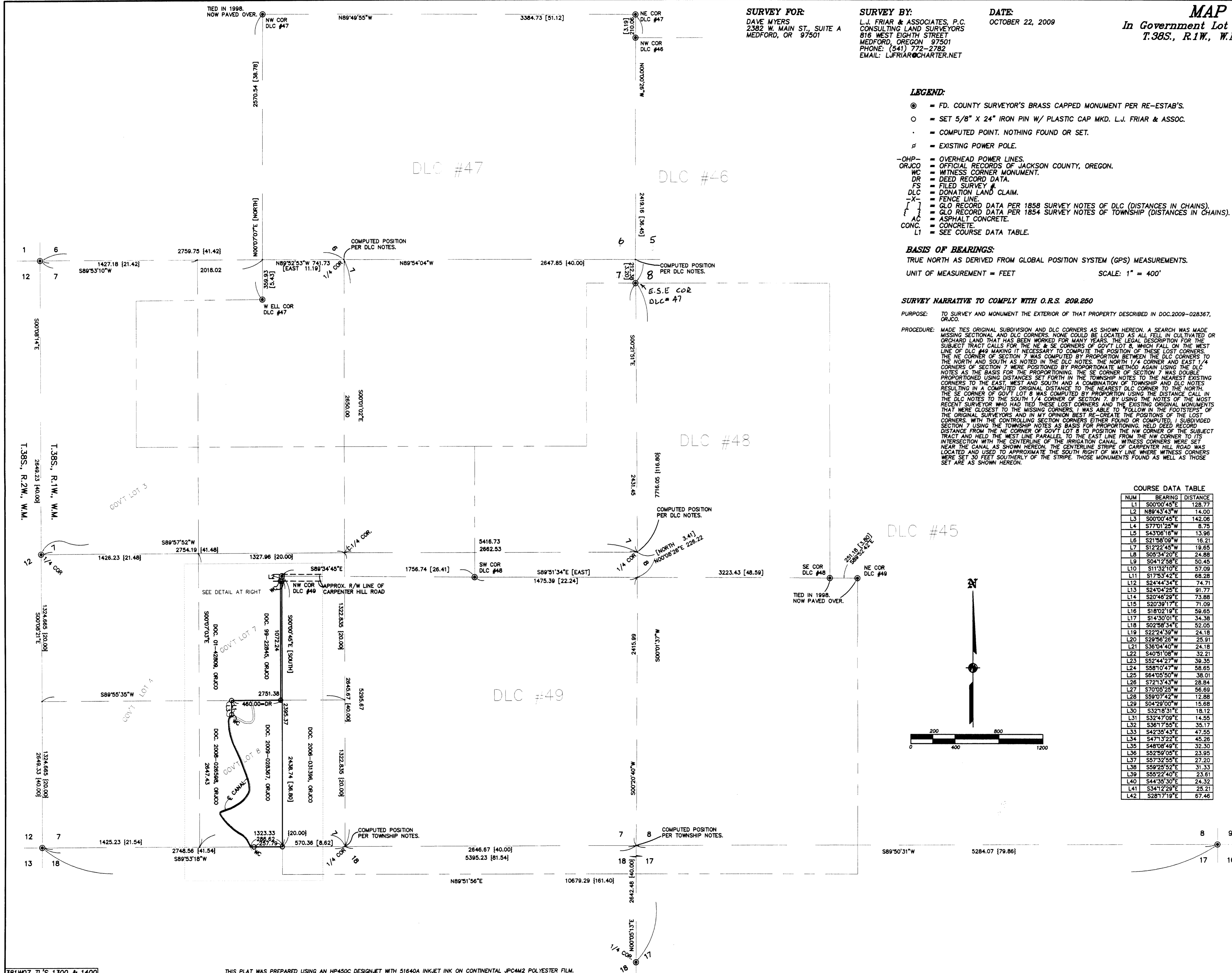
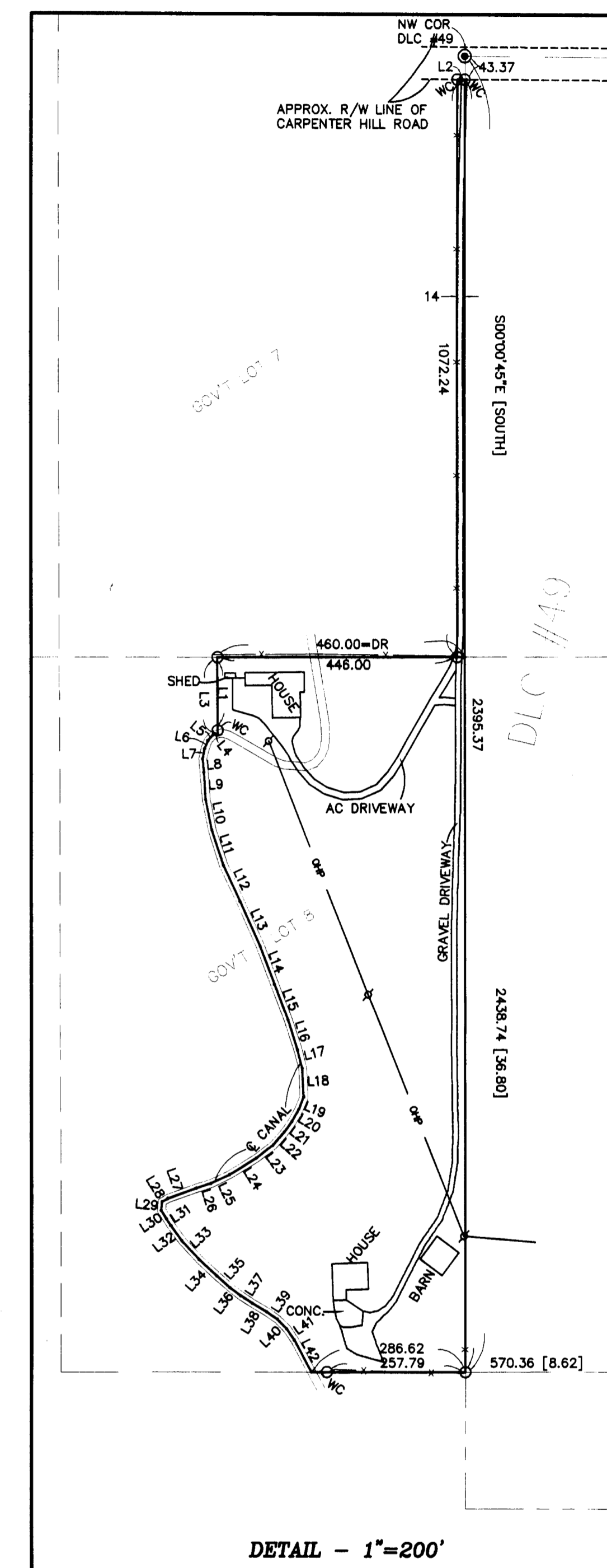
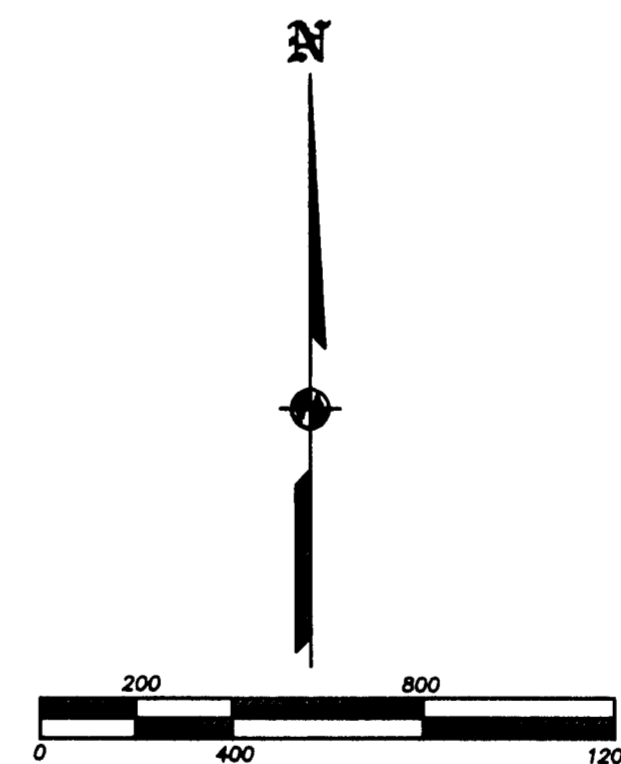
SURVEY NARRATIVE TO COMPLY WITH O.R.S. 200.250

PURPOSE: TO SURVEY AND MONUMENT THE EXTERIOR OF THAT PROPERTY DESCRIBED IN DOC.2009-028367, ORJCO.

PROCEDURE: MADE TIES ORIGINAL SUBDIVISION AND DLC CORNERS AS SHOWN HEREON. A SEARCH WAS MADE MISSING SECTIONAL AND DLC CORNERS. NONE COULD BE LOCATED AS ALL FELL IN CULTIVATED OR ORCHARD LAND THAT HAS BEEN WORKED FOR MANY YEARS. THE LEGAL DESCRIPTION FOR THE SUBJECT TRACT CALLS FOR THE NE & SE CORNERS OF GOV'T LOT 8, WHICH FALL ON THE WEST LINE OF DLC #49 MAKING IT NECESSARY TO COMPUTE THE POSITION OF THESE LOST CORNERS. THE NE CORNER OF SECTION 7 WAS COMPUTED BY PROPORTION BETWEEN THE DLC CORNERS TO THE NORTH AND SOUTH AS NOTED IN THE DLC NOTES. THE NORTH 1/4 CORNER AND EAST 1/4 CORNERS OF SECTION 7 WERE POSITIONED BY PROPORTIONATE METHOD AGAIN USING THE DLC NOTES AS THE BASIS FOR THE PROPORTIONING. THE SE CORNER OF SECTION 7 WAS DOUBLE PROPORTIONED USING DISTANCES SET FORTH IN THE TOWNSHIP NOTES TO THE NEAREST EXISTING CORNERS TO THE EAST, WEST AND SOUTH AND A COMBINATION OF TOWNSHIP AND DLC NOTES RESULTING IN A COMPUTED ORIGINAL DISTANCE TO THE NEAREST DLC CORNER TO THE NORTH. THE SE CORNER OF GOV'T LOT 8 WAS COMPUTED BY PROPORTION USING THE DISTANCE CALL IN THE DLC NOTES TO THE SOUTH 1/4 CORNER OF SECTION 7. BY USING THE NOTES OF THE MOST RECENT SURVEYOR WHO HAD TIED THESE LOST CORNERS AND THE EXISTING ORIGINAL MONUMENTS THAT WERE CLOSEST TO THE MISSING CORNERS, I WAS ABLE TO FOLLOW IN THE FOOTSTEPS OF THE ORIGINAL SURVEYORS AND IN MY OPINION BEST RE-CREATE THE POSITIONS OF THE LOST CORNERS WITH THE CONTROLLING SECTION CORNERS EITHER FOUND OR COMPUTED. I SUBDIVIDED SECTION 7 USING THE TOWNSHIP NOTES AS BASIS FOR PROPORTIONING. HELD DEED RECORD DISTANCE FROM THE NE CORNER OF GOV'T LOT 8 TO POSITION THE NW CORNER OF THE SUBJECT TRACT AND HELD THE WEST LINE PARALLEL TO THE EAST LINE FROM THE NW CORNER TO ITS INTERSECTION WITH THE CENTERLINE OF THE IRRIGATION CANAL. WITNESS CORNERS WERE SET NEAR THE CANAL AS SHOWN HEREON. THE CENTERLINE STRIPE OF CARPENTER HILL ROAD WAS LOCATED AND USED TO APPROXIMATE THE SOUTH RIGHT OF WAY LINE WHERE WITNESS CORNERS WERE SET 30 FEET SOUTHERLY OF THE STRIPE. THOSE MONUMENTS FOUND AS WELL AS THOSE SET ARE AS SHOWN HEREON.

COURSE DATA TABLE

NUM	BEARING	DISTANCE
L1	S00°00'45"E	128.77
L2	N89°43'43"W	14.00
L3	S00°00'45"E	142.06
L4	S77°01'25"W	8.75
L5	S43°08'16"W	13.96
L6	S21°58'09"W	16.21
L7	S12°22'43"W	19.65
L8	S05°54'20"E	24.88
L9	S04°12'58"E	50.45
L10	S11°32'10"E	57.09
L11	S17°53'42"E	68.28
L12	S24°44'34"E	74.71
L13	S24°04'25"E	91.77
L14	S20°48'29"E	73.88
L15	S20°39'17"E	71.09
L16	S18°02'19"E	59.65
L17	S14°30'01"E	34.38
L18	S02°58'34"E	52.05
L19	S22°24'39"W	24.18
L20	S29°56'28"W	25.91
L21	S36°04'40"W	24.18
L22	S40°51'08"W	32.21
L23	S52°44'27"W	39.35
L24	S58°10'47"W	58.65
L25	S64°05'50"W	38.01
L26	S72°34'43"W	28.84
L27	S70°05'25"W	56.69
L28	S59°07'42"W	12.88
L29	S04°29'00"W	15.68
L30	S32°18'31"E	18.12
L31	S32°47'09"E	14.55
L32	S38°17'55"E	35.17
L33	S42°35'43"E	47.55
L34	S47°13'22"E	45.25
L35	S48°08'49"E	32.30
L36	S52°59'05"E	23.95
L37	S57°32'55"E	27.20
L38	S59°25'52"E	31.33
L39	S55°22'40"E	23.61
L40	S44°35'30"E	24.32
L41	S34°12'29"E	25.21
L42	S28°17'19"E	67.46



REGISTERED
PROFESSIONAL
LAND SURVEYOR
James E. Hibbs
OREGON
JULY 17, 1986
JAMES E. HIBBS
2234
RENEWAL DATE 6-30-11

RECEIVED
DATE 10-27-09 BY *PH*
This survey consists of:
1 sheet(s) Map
0 page(s) Narrative
JACKSON COUNTY
SURVEYOR