

NW 1/4 SEC 32 T37S R2W WM

SHEET INDEX

1. SHEET LAYOUT, SHEET INDEX AND NARRATIVE
2. CONTROL NETWORK, CONTROL NARRATIVE AND BASIS OF BEARING
3. SURVEY SHEET
4. RECOVERED MONUMENT LIST AND LEGEND

RECEIVED
 DATE 10-19-09 BY WB
 This survey consists of:
4 sheet(s) Map
0 page(s) Narrative
 JACKSON COUNTY SURVEYOR

NARRATIVE

THIS SURVEY WAS MADE AT THE REQUEST OF THE CITY OF JACKSONVILLE AND THE OREGON DEPARTMENT OF TRANSPORTATION (ODOT), WHICH HAS PLANS FOR AN UPCOMING C STREET PEDESTRIAN, STREET AND BIKE IMPROVEMENT PROJECT, KNOWN AS C STREET BIKE / PEDESTRIAN IMPROVEMENTS (CITY OF JACKSONVILLE), JACKSON COUNTY, OREGON.

THE PURPOSE OF THIS SURVEY IS TO RESOLVE THE FIELD LOCATION OF THE EXISTING RIGHT-OF-WAY FOR A PORTION OF C STREET IN JACKSONVILLE. THIS SURVEY IS IN SUPPORT OF A FUTURE PEDESTRIAN AND STREET IMPROVEMENT PROJECT ALONG C STREET, FROM OREGON STREET TO FIFTH STREET.

THIS SURVEY WAS ALSO PERFORMED TO PERPETUATE THE POSITIONS OF ANY EXISTING SURVEY MONUMENTS THAT LIE NEAR THE PROJECT AREA, BY TYING THE MONUMENTS TO THE PROJECT CONTROL NETWORK. THIS SURVEY MEETS THE REQUIREMENTS FOR A RECOVERY SURVEY AS OUTLINED IN THE OREGON REVISED STATUTES, CHAPTER 209.155(1)(a)(b).

THIS SURVEY WAS PERFORMED IN AUGUST THROUGH SEPTEMBER OF 2009. THE SURVEY EQUIPMENT CONSISTED OF ONE TRIMBLE 5700 GPS RECEIVER, TWO TRIMBLE R8 GPS RECEIVERS, ONE TRIMBLE S6 ROBOTIC TOTAL STATION, TWO TRIMBLE TSC2 DATA COLLECTORS, ONE TRIMBLE ACU DATA COLLECTOR, AND ONE SOKKIA SDL30 DIGITAL LEVEL.

CENTERLINE AND RIGHT-OF-WAY RESOLUTION

THE RESOLUTION OF THE CENTERLINE AND RIGHT-OF-WAY FOR C STREET WAS DETERMINED BY HOLDING A LINE BETWEEN FOUND MONUMENTS NUMBER 1000 TO 1001 FOR THE PORTION OF C STREET BETWEEN OREGON STREET AND FIFTH STREET. THE PORTION OF C STREET BETWEEN FIFTH AND SIXTH STREETS WAS DETERMINED BY HOLDING FOUND MONUMENTS NUMBER 1001 AND 1002 AS SHOWN HEREON. THE CENTERLINE OF FIFTH STREET WAS RESOLVED BY HOLDING A LINE BETWEEN FOUND MONUMENT 1001 AND CALCULATED POSITION NUMBER 1015 AS SHOWN HEREON. THE CENTERLINE OF FOURTH STREET WAS RESOLVED BY HOLDING A LINE FROM FOUND MONUMENT NUMBER 1003 AND THE MID POINT OF A LINE BETWEEN FOUND MONUMENT 1005 AND CALCULATED POSITION NUMBER 1015. THE CENTERLINE OF THIRD STREET WAS RESOLVED BY HOLDING A LINE BETWEEN FOUND MONUMENTS NUMBERED 1000 AND 1005 AS SHOWN HEREON. THE CENTERLINE OF OREGON STREET WAS RESOLVED BY HOLDING FOUND MONUMENT NUMBER 1004 AND RUNNING A LINE 30.00 FEET PERPENDICULAR TO FOUND MONUMENT NUMBER 1006. RECORD DISTANCES FOR THE BLOCKS FIT WELL AND 60.00 FOOT RIGHT-OF-WAYS WERE HELD TO ESTABLISH THE BLOCK LOCATIONS FOR THE ORIGINAL TOWN OF JACKSONVILLE AS SHOWN HEREON.

STATIONING FOR THIS SURVEY IS NOT OF RECORD AND WAS ESTABLISHED FOR THE SOLE PURPOSES OF THIS SURVEY.

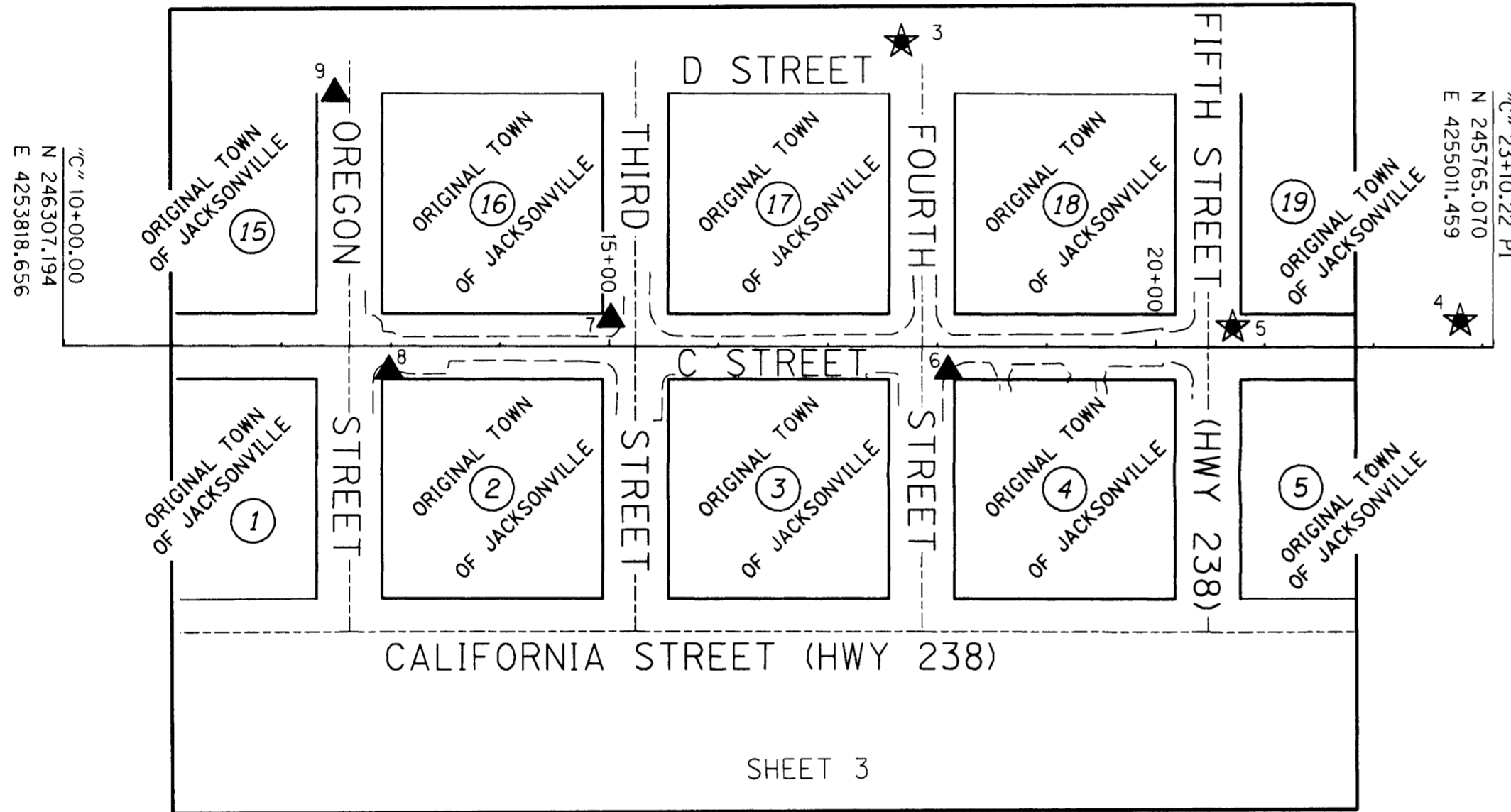
REFERENCES

JACKSON COUNTY SURVEYS NUMBERED 2564, 17499, 17641, 18625, 19111 AND 19792 ALL AS FILED IN THE OFFICE OF THE JACKSON COUNTY SURVEYOR.

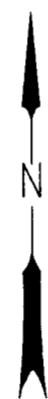
THE PLAT FOR THE ORIGINAL TOWN OF JACKSONVILLE.

DEEDS USED

DEEDS WERE NOT REQUIRED TO RESOLVE THE RECORD RIGHT-OF-WAY LINES OF THE PLATTED AND MONUMENTED STREETS WITHIN THE PROJECT. DEED REFERENCES WERE USED TO GENERATE THE APPROXIMATE TAX LOT LINE LOCATIONS AS SHOWN HEREON.



LEGEND	
★	SET GPS STATION
▲	SET NETWORK STATION



SHEET LAYOUT DIAGRAM
NOT TO SCALE



REGISTERED PROFESSIONAL LAND SURVEYOR

Log Miles
 OREGON
 JULY 12, 2005
 LOGAN MILES
 65452
 RENEWAL: DEC. 31, 2010

Corporate Offices: 920 COUNTRY CLUB ROAD, SUITE 100B EUGENE, OREGON 97401-6089, 541-683-6090
 2235 MISSION STREET SE, SUITE 100 SALEM, OREGON 97302-1295, 503-589-4100
 831 O'HARE PARKWAY MEDFORD, OREGON 97504-4005, 541-774-5590
 5005 SW MEADOWS ROAD, SUITE 120 LAKE OSWEGO, OREGON 97035, 503-620-6103
OBEC CONSULTING ENGINEERS
 www.obec.com

FILE NAME: 16569_RET.dgn

OREGON DEPARTMENT OF TRANSPORTATION
 HORIZONTAL CONTROL, RECOVERY AND RETRACEMENT SURVEY
 C STREET:
 BIKE AND PEDESTRIAN IMPROVEMENTS
 CITY OF JACKSONVILLE

ODOT REGION 3
 3500 NW STEWART PARKWAY
 ROSEBURG, OR 97470
 KEY NO. 16569

OCTOBER 19, 2009
 NO SCALE
 SHEET 1 OF 4

JIM COLTON	OBEC	DESIGNED: LOGAN MILES	PROJ. NO. 19-98.02
APPROVED BY: SURVEY GRP. MNGR.		DRAWN: LOGAN MILES	CHK'D: WAYNE DONOVAN

NW 1/4 SEC 32 T37S R2W WM

**** RECEIVED ****
 DATE 0-19-09 BY LD
 This survey consists of:
4 sheet(s) Map
2 page(s) Narrative
 JACKSON COUNTY
 SURVEYOR

YPC = YELLOW PLASTIC CAP
 FD = FOUND
 SN = SURVEY NUMBER
 CONC = CONCRETE
 ALL FOUND MONUMENTS ARE ASSUMED TO BE IN GOOD CONDITION UNLESS STATED OTHERWISE

RECOVERED MONUMENT LIST

PT. NO.	LDP NORTHING	LDP EASTING	STATION	OFFSET	DATE	DESCRIPTION & REFERENCE DOCUMENTS
1000	246090.15	4254295.67	"C" 15+24.07	0.00' RT	9/3/09	FD 5/8" IRON ROD, DOWN 0.4', SN 2581
1001	245873.08	4254772.76	"C" 20+48.22	0.00' RT	9/3/09	FD 2" BRASS DISK MARKED "ODOT CONTROL", DOWN 0.7', IN MONUMENT BOX, SN 18625
1002	245765.07	4255011.46	"C" 23+10.22	0.00' RT	9/3/09	FD 5/8" IRON ROD, DOWN 0.6', ORIGIN UNKNOWN
1003	246218.40	4254641.85	"C" 17+86.05	260.10' LT	9/9/09	FD 5/8" IRON ROD, DOWN 0.6', SN 2132
1004	245961.87	4253949.56	"C" 12+62.16	260.11' RT	9/9/09	FD 2" BRASS DISK MARKED "ODOT CONTROL", DOWN 0.6', IN MONUMENT BOX, SN 18625
1005	245853.37	4254188.06	"C" 15+24.19	260.09' RT	9/9/09	FD 2" BRASS DISK MARKED "ODOT CONTROL", DOWN 0.2', IN MONUMENT BOX, SN 18625
1006	246238.36	4254042.23	"C" 12+32.00	29.93' LT	9/9/09	FD 5/8" IRON ROD WITH YPC MARKED "BRADSHAW LS 2271", UP 0.2', SN 19792
1007	246307.10	4253818.61	"C" 10+00.00	0.10' RT	9/9/09	FD PK NAIL, FLUSH IN ASPHALT, ORIGIN UNKNOWN, SEE SN 19792
1008	246127.47	4254141.63	"C" 13+68.41	29.82' RT	9/9/09	FD 1/2" IRON ROD, DOWN 0.6', SN 3276
1009	246023.54	4254369.60	"C" 16+18.95	30.02' RT	9/9/09	FD 5/8" IRON ROD WITH YPC MARKED "LJ FRIAR & ASSOC.", FLUSH, SN 17641
1010	246014.86	4254388.81	"C" 16+40.03	29.95' RT	9/9/09	FD 5/8" IRON ROD WITH YPC ILLEGIBLE, FLUSH, SN 17641
1011	245651.17	4254703.59	"C" 20+76.68	230.69' RT	9/9/09	FD 1" BRONZE CAP, FLUSH IN CONC MARKED "ODOT CONTROL", SN 18625
1012	245674.44	4254637.92	"C" 20+07.76	236.64' RT	9/9/09	FD 1" BRONZE CAP, FLUSH IN CONC MARKED "ODOT CONTROL", SN 18625
1013	245602.40	4254689.33	"C" 20+83.80	281.00' RT	9/9/09	FD 1" BRONZE CAP, FLUSH IN CONC MARKED "ODOT CONTROL", SN 18625
1014	245621.22	4254625.63	"C" 20+18.60	290.17' RT	9/9/09	FD 1" BRONZE CAP, FLUSH IN CONC MARKED "ODOT CONTROL", SN 18625
1015	245636.38	4254665.09	N/A	N/A	9/9/09	CALCULATED POSITION FROM REFERENCE POINTS, SN 18625

PROJECT LEGEND	
()	RECORD DATA PER SN 17499
[]	RECORD DATA PER SN 18625
< >	RECORD DATA PER SN 2564
{ }	RECORD DATA PER SN 19792
(())	RECORD DATA PER SN 17641
[[]]	RECORD DATA PER SN 19111
○	FOUND MONUMENT NOTED IN TABLE
□	CALCULATED POSITION FROM RECORD REFERENCE POINTS, PER SN 18625
▲	SET NETWORK STATION
★	SET GPS STATION USED FOR NETWORK CONTROL
—	RIGHT-OF-WAY
—	PROPERTY OR UNRESOLVED RIGHT-OF-WAY LINE
----	ORIGINAL LOT LINE, PER PLAT OF ORIGINAL TOWN OF JACKSONVILLE
---	EDGE OF EXISTING PAVEMENT
-X-	EXISTING FENCE

FILE NAME: 16569_RET.dgn

OBEC CONSULTING ENGINEERS
 Corporate Office: 920 COUNTRY CLUB ROAD, SUITE 100B EUGENE, OREGON 97401-6089, 541-683-6090
 2235 MISSION STREET SE, SUITE 100 SALEM, OREGON 97302-1295, 503-589-4100
 831 O'HARE PARKWAY MEDFORD, OREGON 97504-4005, 541-774-5590
 5005 SW MEADOWS ROAD, SUITE 120 LAKE OSWEGO, OREGON 97035, 503-620-6100
 www.obec.com

OREGON DEPARTMENT OF TRANSPORTATION
 HORIZONTAL CONTROL, RECOVERY AND RETRACEMENT SURVEY
 C STREET:
 BIKE AND PEDESTRIAN IMPROVEMENTS
 CITY OF JACKSONVILLE

ODOT REGION 3
 3500 NW STEWART PARKWAY
 ROSEBURG, OR 97470
 KEY NO. 16569
 OCTOBER 19, 2009
 NO SCALE
 SHEET 4 OF 4

DESIGNED: LOGAN MILES
 DRAWN: LOGAN MILES
 PROJ. NO. 19-98.02
 CHK'D: WAYNE DONOVAN



REGISTERED PROFESSIONAL LAND SURVEYOR

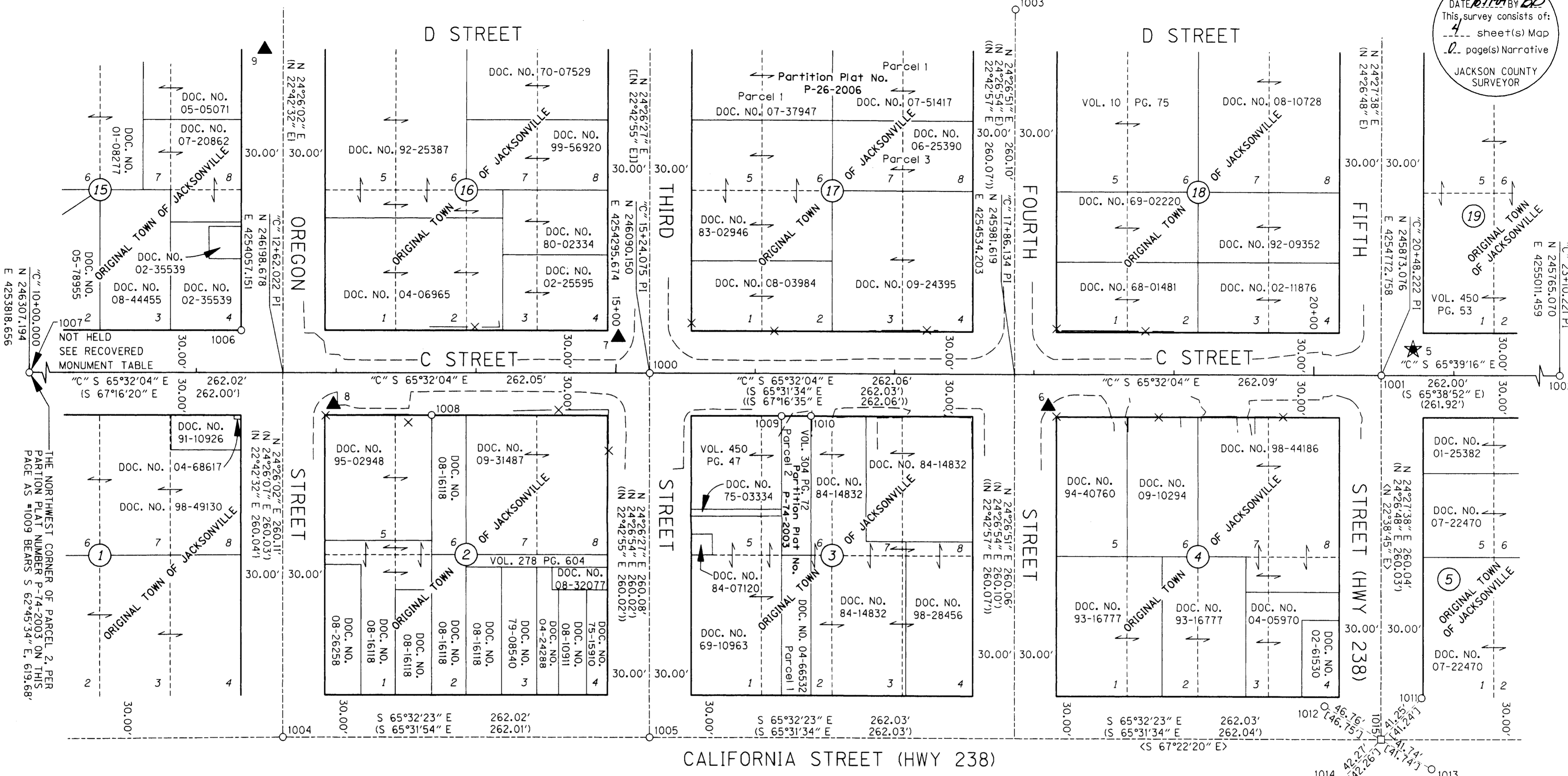
Logan Miles
 OREGON
 JULY 12, 2005
 LOGAN MILES
 65452

RENEWAL: DEC. 31, 2010

NW 1/4 SEC 32 T37S R2W WM

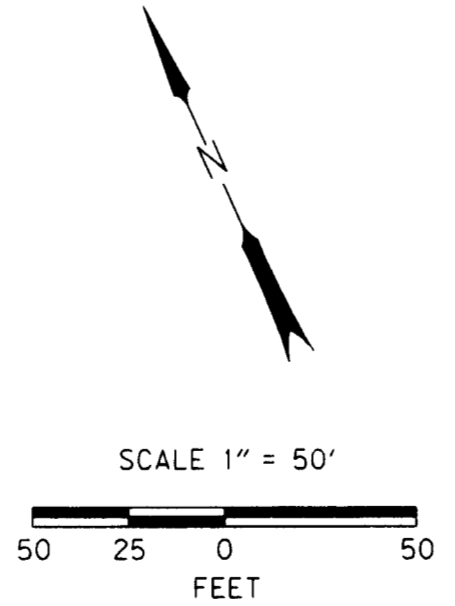


RECEIVED BY DATE 10/19/09 BY BB This survey consists of: 4 sheet(s) Map 2 page(s) Narrative JACKSON COUNTY SURVEYOR



*SEE SHEET 4 FOR RECOVERED MONUMENT LIST

LEGEND SEE SHEET 4



ENGLISH REGISTERED PROFESSIONAL LAND SURVEYOR OREGON JULY 12, 2005 LOGAN MILES 65452 RENEWAL: DEC. 31, 2010

FILE NAME: 16569_RET.dgn

OBEC CONSULTING ENGINEERS Corporate Office: 920 COUNTRY CLUB ROAD, SUITE 100B EUGENE, OREGON 97401-6089, 541-683-6050 2235 MISSION STREET SE, SUITE 100 SALEM, OREGON 97302-1295, 503-589-4100 831 O' HARE PARKWAY MEDFORD, OREGON 97504-4005, 541-774-5590 5005 SW MEADOWS ROAD, SUITE 120 LAKE OSWEGO, OREGON 97035, 503-620-6103 www.obec.com

OREGON DEPARTMENT OF TRANSPORTATION HORIZONTAL CONTROL, RECOVERY AND RETRACEMENT SURVEY C STREET: BIKE AND PEDESTRIAN IMPROVEMENTS CITY OF JACKSONVILLE

ODOT REGION 3 3500 NW STEWART PARKWAY ROSEBURG, OR 97470 OCTOBER 19, 2009 1" = 50' KEY NO. 16569 SHEET 3 OF 4

DESIGNED: LOGAN MILES PROJ. NO. 19-98.02 DRAWN: LOGAN MILES CHK'D: WAYNE DONOVAN

NW 1/4 SEC 32 T37S R2W WM

RECEIVED
 DATE: 10/19/09 BY: [Signature]
 This survey consists of:
 1 sheet(s) Map
 2 page(s) Narrative
 JACKSON COUNTY SURVEYOR

LEGEND	
★	SET GPS STATION
▲	SET NETWORK STATION
★---★	LINE(S) OF OBSERVATION (NOT INTERVISIBLE)
★---▲	LINE(S) OF OBSERVATION (INTERVISIBLE)

1.96 SIGMA (95%) CONFIDENCE LEVEL LIMITS

POINT NO	SEMI MAJOR	SEMI MINOR	ORIENTATION*
4	0.02 INT FT	0.02 INT FT	173.9°
5	0.02 INT FT	0.02 INT FT	48.2°
6	0.01 INT FT	0.01 INT FT	112.0°
7	0.02 INT FT	0.02 INT FT	162.1°
8	0.03 INT FT	0.02 INT FT	169.9°
9	0.02 INT FT	0.02 INT FT	27.2°

* NORTH AZIMUTH

FIXED POINTS NOT SUBJECT TO LEAST SQUARES ADJUSTMENT OR CONFIDENCE LEVEL ANALYSIS: POINTS 1, 2 AND 3

CONTROL NARRATIVE

PROJECT: C STREET: BIKE/PEDESTRIAN IMPROVEMENTS
 CITY OF JACKSONVILLE
 LOCATION: JACKSON COUNTY
 ODOT KEY NUMBER: 16569
 OBEC PROJECT: 0019-0098.02
 SURVEY DATUM:
 HORIZONTAL - NAD83 (CORS96) EPOCH 2002 (INTERNATIONAL FEET)
 VERTICAL DATUM - NAVD 88 (INTERNATIONAL FEET)

HORIZONTAL CONTROL SURVEY

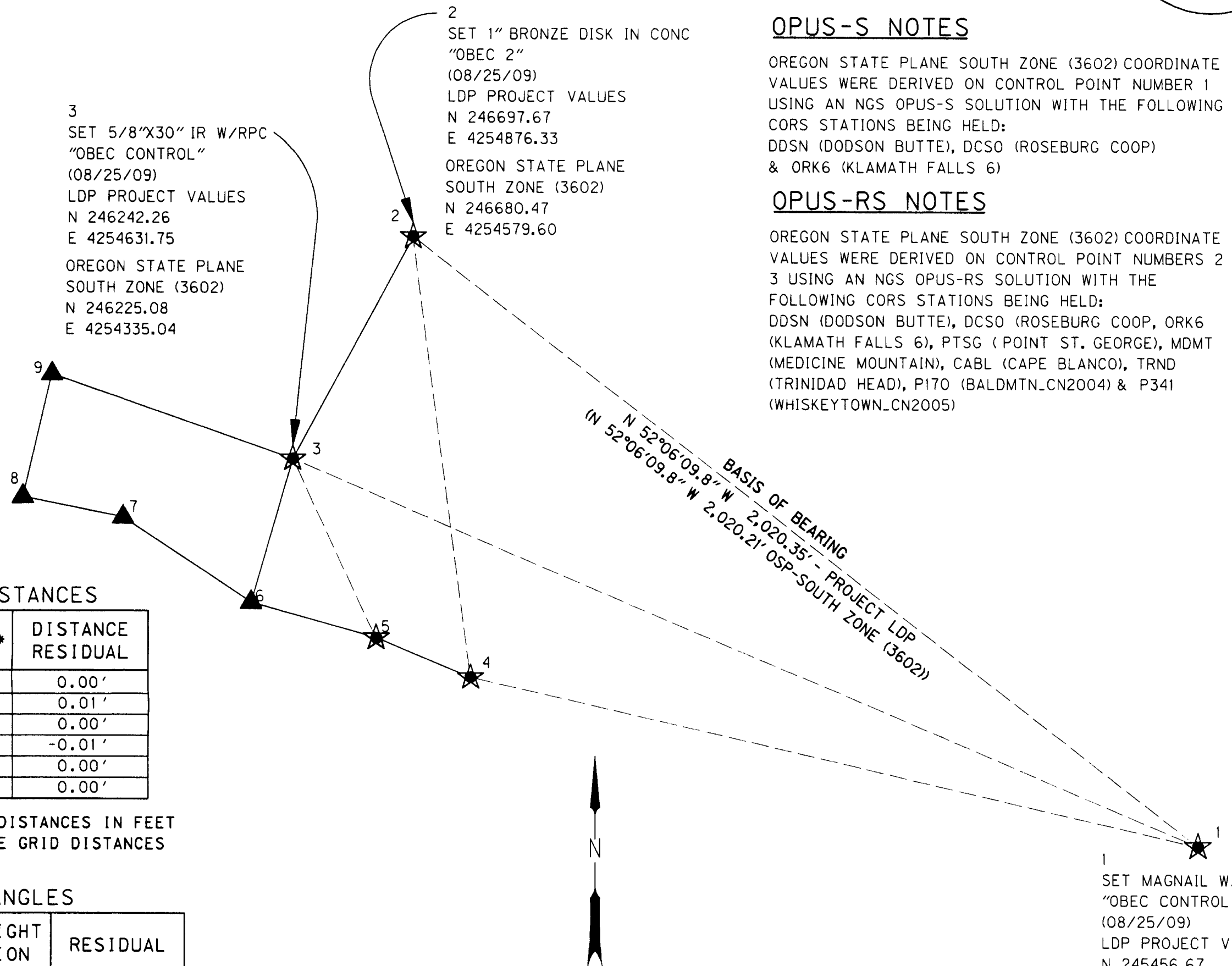
THE PRIMARY HORIZONTAL CONTROL WAS BROUGHT INTO THE PROJECT BY USING AN OPUS-S SOLUTION FOR CORS STATIONS "DDSN, DCSO, & ORK6", THEREBY ESTABLISHING A POSITION ON POINT 1. PRIMARY HORIZONTAL CONTROL WAS BROUGHT INTO THE PROJECT BY USING AN OPUS-RS SOLUTION FOR CORS STATIONS "DDSN, DCSO, ORK6, PTSG, MDMT, CABL, TRND, P170 & P341", THEREBY ESTABLISHING POSITIONS ON POINTS 2 & 3.

A SUBSEQUENT STATIC GPS SURVEY WAS PERFORMED TO ESTABLISH POSITIONS FOR POINTS 4 AND 5. A CONVENTIONAL TRAVERSE WAS RUN TO ESTABLISH A POSITION FOR POINTS 6-9. THE COORDINATE SYSTEM WAS HELD AT OREGON STATE PLANE - SOUTH ZONE (3602), UNTIL ALL GPS CONTROL SURVEYING AND ADJUSTMENTS WERE COMPLETED. THEN ALL POINTS WERE MOVED TO GROUND (LOCAL DATUM PLANE COORDINATE SYSTEM). TO CONVERT THE PROJECT LDP COORDINATES TO THE OREGON STATE PLANE COORDINATE SYSTEM - SOUTH ZONE NAD 83(CORS96) EPOCH 2002, MULTIPLY THE COORDINATE VALUES BY A COMBINED FACTOR OF 0.99993026.

VERTICAL CONTROL SURVEY

VERTICAL CONTROL IS BASED ON THE NAVD 88 DATUM AND WAS ESTABLISHED BY HOLDING THE PUBLISHED ELEVATION FOR USGS BENCHMARK Y199 CONVERTED TO NAVD 88 USING NGS SOFTWARE VERTCON AND RUNNING A DIGITAL LEVEL CIRCUIT THROUGH CONTROL POINTS 2 THROUGH 9.

CONTROL POINTS FOR THIS SURVEY WERE NOT SET ON AND DO NOT REPRESENT PROPERTY LINES OR RIGHT-OF-WAY LINES AND ARE INTENDED FOR USE SOLELY BY THE CITY OF JACKSONVILLE, THE OREGON DEPARTMENT OF TRANSPORTATION (ODOT), AND OBEC CONSULTING ENGINEERS IN SUPPORT OF FUTURE PROJECTS. IT IS NOT THE INTENT OF THE CITY OF JACKSONVILLE, ODOT, OR OBEC CONSULTING ENGINEERS TO PERPETUATE THESE CONTROL POINTS AS MONUMENTS.



RESIDUALS FOR DISTANCES

BETWEEN	DISTANCE**	DISTANCE RESIDUAL
3 6	303.03'	0.00'
6 5	263.96'	0.01'
6 7	312.20'	0.00'
7 8	208.81'	-0.01'
8 9	257.47'	0.00'
9 3	520.69'	0.00'

** CALCULATED HORIZONTAL GRID DISTANCES IN FEET DERIVED FROM THE MEASURED SLOPE GRID DISTANCES

RESIDUALS FOR ANGLES

BACKSIGHT STATION	OCCUPIED STATION	FORESIGHT STATION	RESIDUAL
2 3	3 6	6 5	-0°00'08.8"
3 6	6 7	7 8	-0°00'05.7"
3 6	6 7	7 8	0°00'02.9"
6 7	7 8	8 9	0°00'07.5"
7 8	8 9	9 3	0°00'13.2"
8 9	9 3	3 6	0°00'03.4"
9 3	3 6	6 5	-0°00'00.6"

NETWORK POINT COORDINATE TABLE

PT. ID.	LDP NORTHING	LDP EASTING	ELEVATION	DATE	DESCRIPTION
1	245456.67	4256470.62	1534.48*	8/25/09	SET MAGNAIL WITH WASHER MARKED "OBEC CONTROL"
2	246697.67	4254876.33	1544.97	8/25/09	SET 1" BRONZE DISK IN CONC MARKED "OBEC 2"
3	246242.26	4254631.75	1556.23	8/25/09	SET 5/8" X 30" IRON ROD W/RPC MARKED "OBEC CONTROL"
4	245799.44	4254994.01	1553.94	8/25/09	SET 1" BRONZE DISK IN CONC MARKED "OBEC 4"
5	245880.68	4254801.16	1558.24	8/25/09	SET 1" BRONZE DISK IN CONC MARKED "OBEC 5"
6	245951.35	4254546.82	1561.88	8/27/09	SET MAGNAIL WITH WASHER MARKED "OBEC CONTROL"
7	246122.44	4254285.65	1563.82	8/27/09	SET 1" BRONZE DISK IN CONC MARKED "OBEC 7"
8	246163.37	4254080.87	1568.22	8/27/09	SET 1" BRONZE DISK IN CONC MARKED "OBEC 8"
9	246413.95	4254140.14	1563.14	8/27/09	SET MAGNAIL WITH WASHER MARKED "OBEC CONTROL"

* GPS DERIVED ELEVATION

RPC = RED PLASTIC CAP
 CONC = CONCRETE

ENGLISH

 REGISTERED PROFESSIONAL LAND SURVEYOR
 [Signature]
 OREGON
 JULY 12, 2005
 LOGAN MILES
 65452
 RENEWAL: DEC. 31, 2010

OPUS-S NOTES

OREGON STATE PLANE SOUTH ZONE (3602) COORDINATE VALUES WERE DERIVED ON CONTROL POINT NUMBER 1 USING AN NGS OPUS-S SOLUTION WITH THE FOLLOWING CORS STATIONS BEING HELD: DDSN (DODSON BUTTE), DCSO (ROSEBURG COOP) & ORK6 (KLAMATH FALLS 6)

OPUS-RS NOTES

OREGON STATE PLANE SOUTH ZONE (3602) COORDINATE VALUES WERE DERIVED ON CONTROL POINT NUMBERS 2 & 3 USING AN NGS OPUS-RS SOLUTION WITH THE FOLLOWING CORS STATIONS BEING HELD: DDSN (DODSON BUTTE), DCSO (ROSEBURG COOP, ORK6 (KLAMATH FALLS 6), PTSG (POINT ST. GEORGE), MDMT (MEDICINE MOUNTAIN), CABL (CAPE BLANCO), TRND (TRINIDAD HEAD), P170 (BALDMTN_CN2004) & P341 (WHISKEYTOWN_CN2005)

CONTROL NETWORK SCHEMATIC & BASIS OF BEARING

NOT TO SCALE

OBEC CONSULTING ENGINEERS
 Corporate Office: 920 COUNTRY CLUB ROAD, SUITE 100B EUGENE, OREGON 97401-6089, 541-683-6090
 2235 MISSION STREET SE, SUITE 100 SALEM, OREGON 97302-1295, 503-589-4100
 831 O' HARE PARKWAY MEDFORD, OREGON 97504-4005, 541-774-5590
 5005 SW MEADOWS ROAD, SUITE 120 LAKE OSWEGO, OREGON 97035, 503-620-6103

OREGON DEPARTMENT OF TRANSPORTATION

HORIZONTAL CONTROL, RECOVERY AND RETRACEMENT SURVEY
 C STREET:
 BIKE AND PEDESTRIAN IMPROVEMENTS
 CITY OF JACKSONVILLE

ODOT REGION 3
 3500 NW STEWART PARKWAY
 ROSEBURG, OR 97470
 KEY NO. 16569
 OCTOBER 19, 2009
 NO SCALE
 SHEET 2 OF 4

DESIGNED: LOGAN MILES
 DRAWN: LOGAN MILES
 PROJ. NO. 19-98.02
 CHK'D: WAYNE DONOVAN