

LEGEND

- SET 5/8" X 30" REBAR WITH PLASTIC CAP MARKED "TEMPLIN LS2359"
- ▲ SET LEAD IN DRILL HOLE IN AC DRIVEWAY W/ STAINLESS STEEL SCREW IN STAINLESS STEEL WASHER MARKED "LS2359"
- FD. 5/8" IRON ROD WITH PLASTIC CAP MARKED "MINNECI 2349" PER THE MEADOWS AT CREEKWOOD VILLAGE, PHASES 1 AND 2 (FS 18958)
- ⊕ FD. CENTERLINE MONUMENTS - ALUMINUM CAPS STAMPED "LS 2349" PER THE MEADOWS AT CREEKWOOD VILLAGE, PHASES 1 AND 2 (FS 18958)
- CALCULATED BRASS DISC IN MONUMENT CASE FROM CITY REFERENCE POINTS (MONUMENT'S HAVE BEEN PAVED OVER)
- ⊙ BRASS DISC IN CONCRETE PER F.S. NO. 11979
- △ INDICATES CALCULATED POSITION
- { } INDICATES RECORD DATA PER FS 2865
- [] INDICATES RECORD DATA PER SKY CREST ESTATES SUBDIVISION, UNIT NO. 3 (FS 7074)
- () INDICATES RECORD DATA PER THE MEADOWS AT CREEKWOOD VILLAGE, PHASES 1 AND 2 (FS 18958)
- FS INDICATES "FILED SURVEY"
- D.R. INDICATES "DEED RECORD"

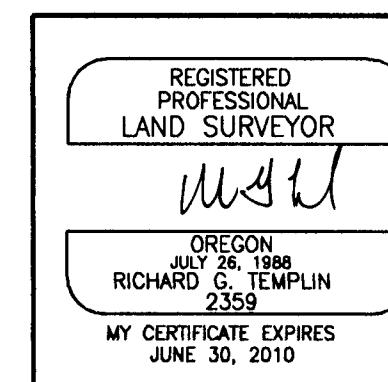
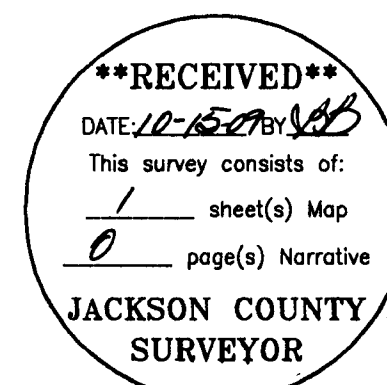
BASIS OF BEARING: C/L OF HIGHCREST DRIVE PER F.S NUMBER 2865

SURVEY NARRATIVE

PURPOSE: To survey and monument the boundary of my client's property per a current Subdivision Guarantee, dated October 8, 2009.

PROCEDURE: I searched for monuments set on filed surveys 2865, 7074 and 18958. The right of way monuments set on filed survey number 2865 have been destroyed over the years. Utilizing the found centerline monuments along Highcrest Drive and the calculated centerline monuments along Angelcrest Drive (these centerline monuments were reestablished using the 38 cal. references furnished by the City of Medford), I calculated the right of way lines. The record monuments along the West line of Lot 13 of "SKYCREST ESTATES SUBDIVISION, UNIT 3" have been destroyed by excavation work. To reestablish the Southwest corner of Lot 13, I held record distance from the Northwest corner of "TRACT A of THE MEADOWS AT CREEKWOOD VILLAGE, PHASE 1 & 2". To reestablish the Northwest corner of Lot 13, I held a bearing-bearing intersection from the Southwest corner of Lot 13 and the Southerly right of way line of Angelcrest Drive. In 1985 a deeded strip of land was conveyed to Lot 13 through instrument number 85-09048 by the City of Medford. Monuments were set along the deeded line, as shown. Monuments were set on the calculated right of way lines of Angelcrest Drive and Highcrest Drive, utilizing record data from filed survey number 2865.

FILE: "angelcrest pump station 10-12-09.dwg"



RICHARD TEMPLIN LAND SURVEYING
P.O. BOX 1946 899-2032 JACKSONVILLE, OREGON

Map of Survey
Located In
NW 1/4 of the SW 1/4 of Section 23,
T.37S., R.1W., W.M.
City of Medford, Jackson County, Oregon

For: Medford Water Commission
200 South Ivy, Room 177
Medford, Or. 97501-8601

DATE: October 12, 2009