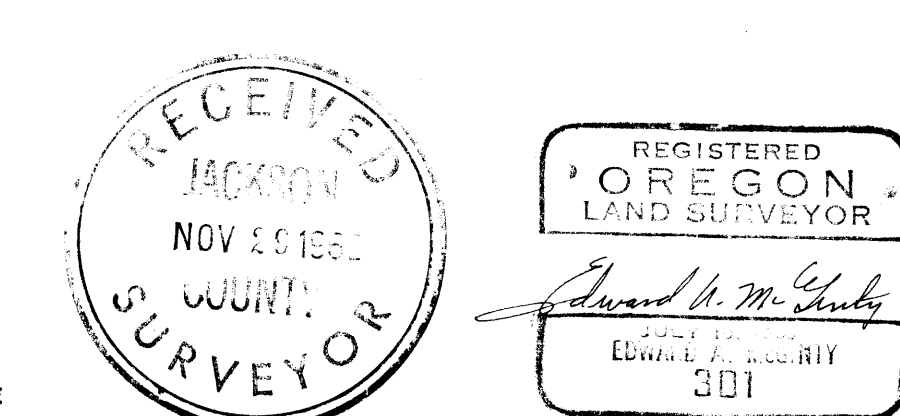


SEC. 31, T. 36 S., R. 1 E.

SURVEY IN SEC. 36 T. 36 S., R. 1 W.  
 FOR  
 CAL-ORE-RANCHES  
 62 - 31

BY EDWARD MC GINTY  
 MEDFORD OREGON  
 OCTOBER 1962

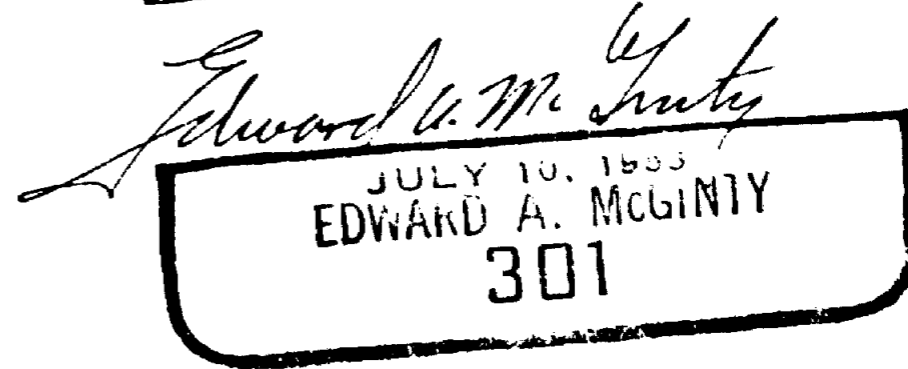
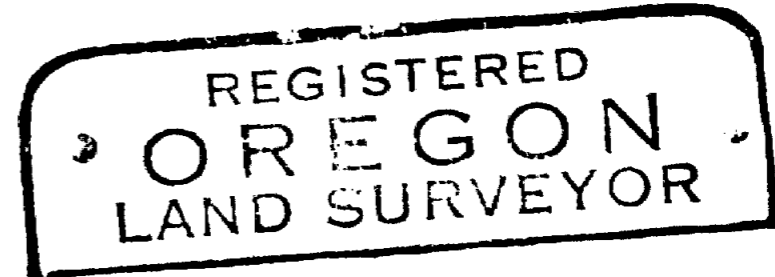
SCALE 1" = 300'  
 ○ = 1/2" I. PIN  
 ● = 5/8" I. PIN  
 ⊙ = 3/4" I. PIN



Survey Narrative to comply with O.R.S. 209-205.

Survey for: Cal-Ore Ranches  
843 E. Main St.

Survey by: Edward A. McGinty, L.S.  
11/1/62



BASIS OF BEARING: Solar observation.

PRECEDENCE OF SURVEY:

This survey is a partial retracement of Survey No. 215, recorded in the County Surveyors office.

Found hubs or nails set on previous survey at P.I. of curve and angle points, said points were replaced with iron pins.

The NE. corner of DLC 41 was determined from stump being the same procedure as used in previous survey No. 215.

The 1/4 cor. of Sec. 25 and 36 was determined from a stump hole and stump, survey No. 215 indicates the 1/4 cor. was determined from a stump to the SW., but on the calculation sheets it shows as using record distance along the northerly line in sub-dividing the section which creates a conflict or contradiction in Sur. No. 215 as to the location of the 1/4 cor.

At the S $\frac{1}{4}$  cor., E $\frac{1}{4}$  cor., and the SE cor. and NE. cor. were monumented, as the County re-estab. records show, with a concrete monument at the NE. cor. of the Sec. instead of an iron pipe.

At the N $\frac{1}{4}$  cor. of Sec. 36, previously mentioned as being determined by a stump and stump hole, set a 3/4 in. iron pin, 30 ins. long, from which

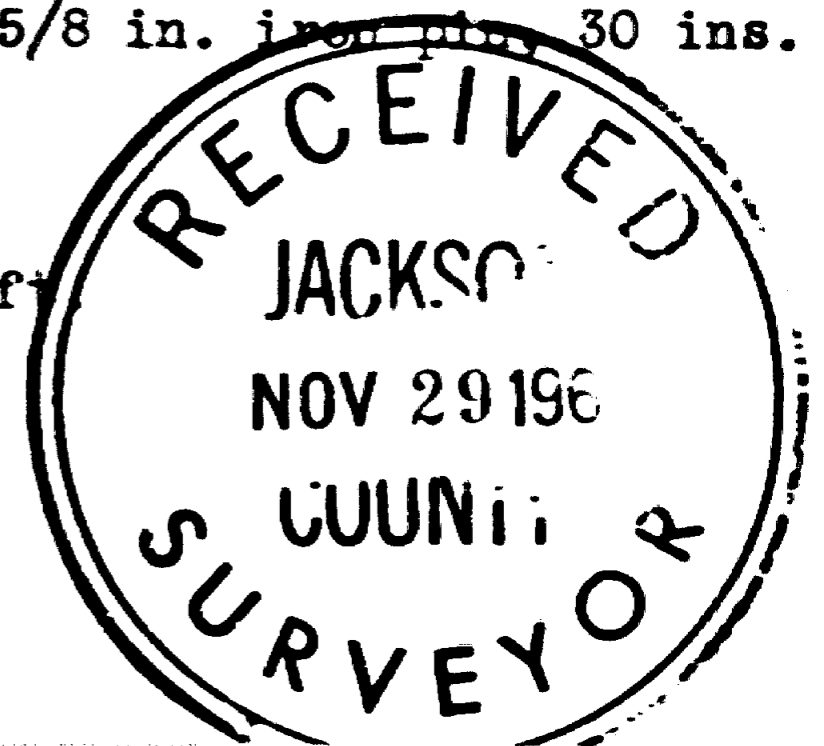
- A white oak, 8 ins. diam., bears N.2 $\frac{1}{2}$ °W., 219.40 ft. to blaze
- A white oak, 8 ins. diam., bears N.88 $\frac{1}{4}$ °E., 142.6 ft. to blaze
- 1/2 in. iron pin, old proposed r/w marker, bears N.38°W., 8.5 ft.

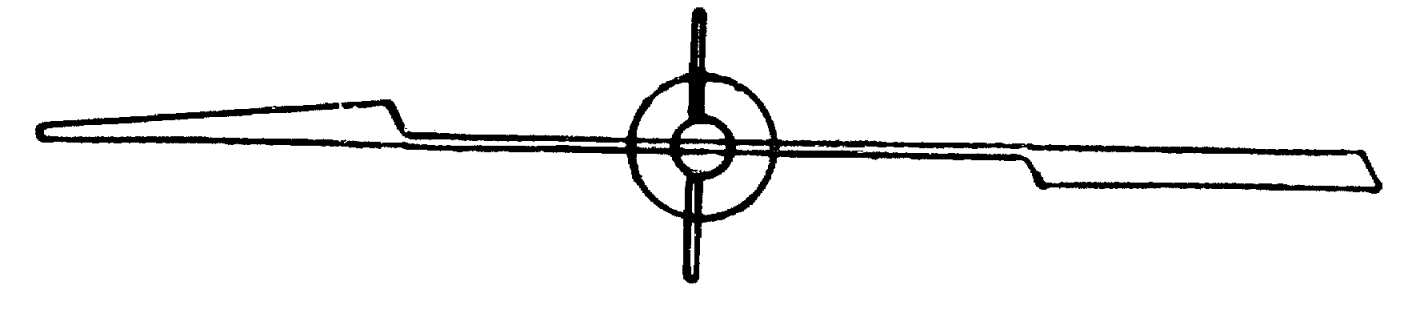
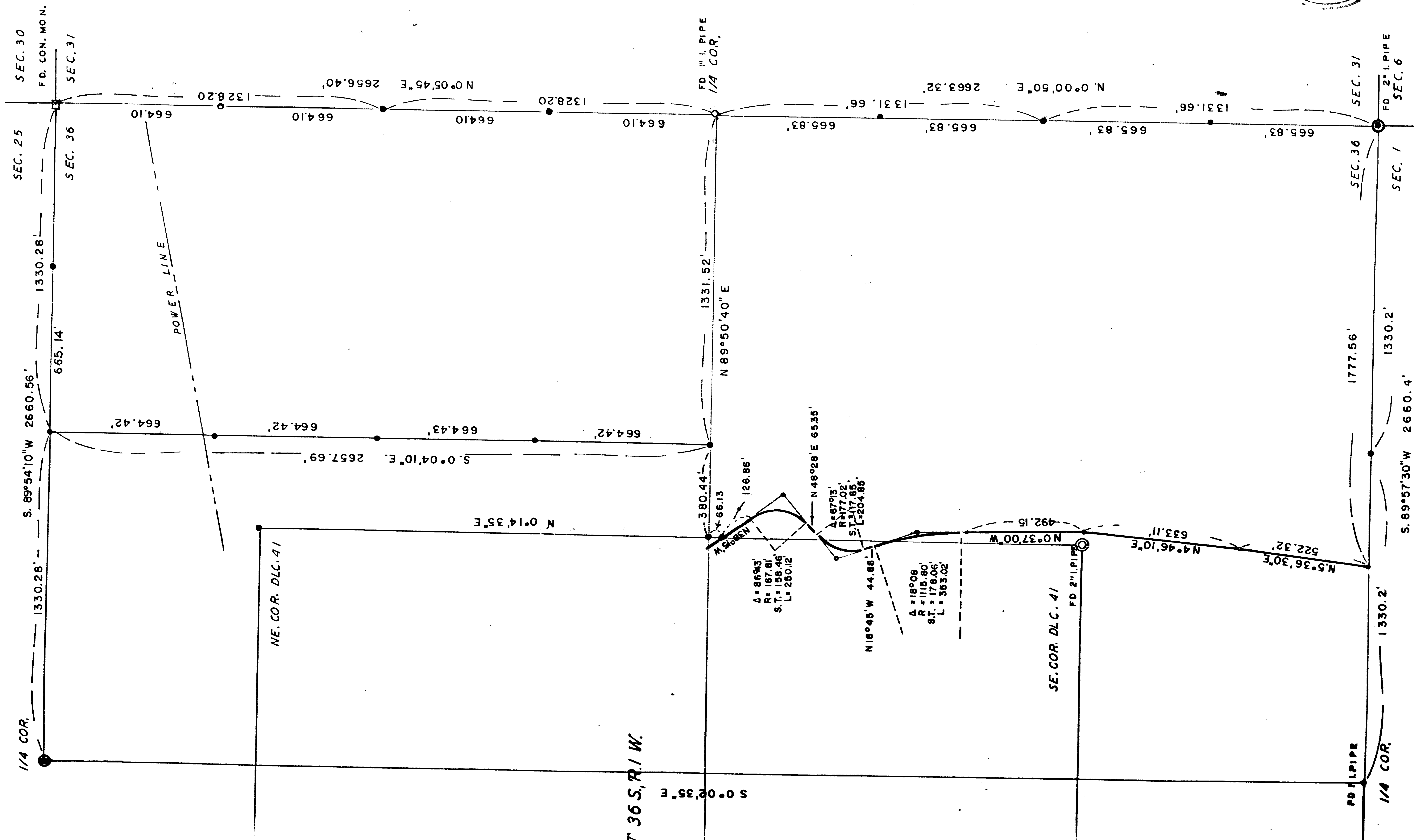
The West 1/4 cor. of Sec. 36 was determined (after a discussion with the County Surveyor) from the remaining BT. Set a 3/4 in. iron pin, 30 ins. in length, 38 in. deep, from which

- Original BT., 1/4 S. visible, bears S.17°E., 172.92 ft.
- The face of a blaze on a 36 in. white oak, bears S.31 3/4° W., 103.5 ft.
- A concrete monument, bears S.69 3/4 °W., 7.13 ft.

The NE. cor. of DLC 41, previously mentioned, was set with a 5/8 in. iron pin, 30 ins. in length, from which

- A black oak, 16 ins. diam., bears West 119.80 ft.
- A white oak, 14 ins. diam., bears S.49°55'W., 241.2 ft.
- Center of P.P.  $\frac{3}{44}$  bears N.41°05'W., 148.75 ft.



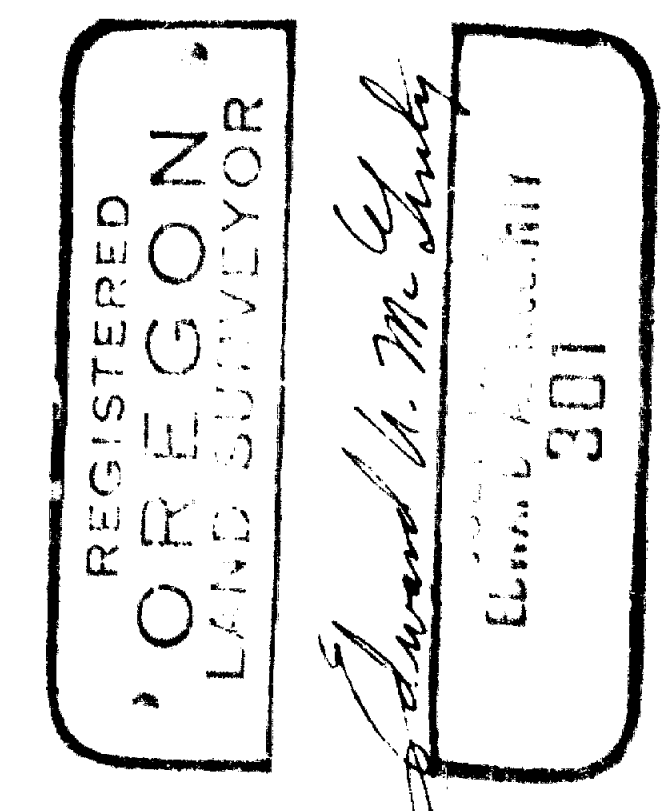
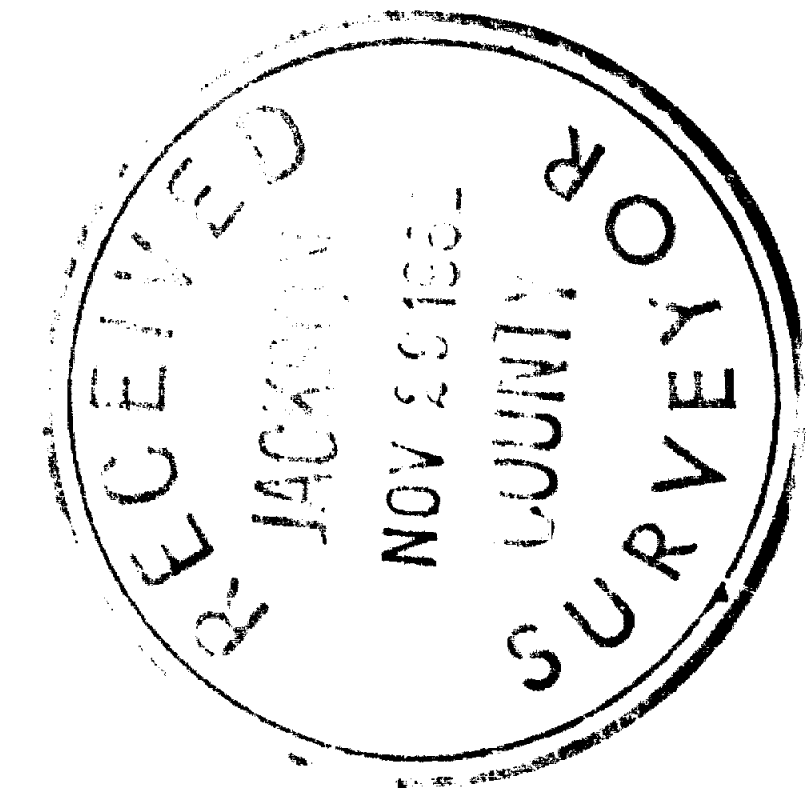


SEC. 31, T. 36 S., R. 1 E.

SURVEY IN SEC. 36 T. 36 S., R. 1 W.  
FOR  
CAL-ORE-RANCHES  
62 - 31

BY EDWARD MC GINTY  
MEDFORD OREGON  
OCTOBER 1962

SCALE 1" = 300'  
○ = 1/2" I. PIN  
● = 5/8" I. PIN  
⊙ = 3/4" I. PIN



R. 1 W.