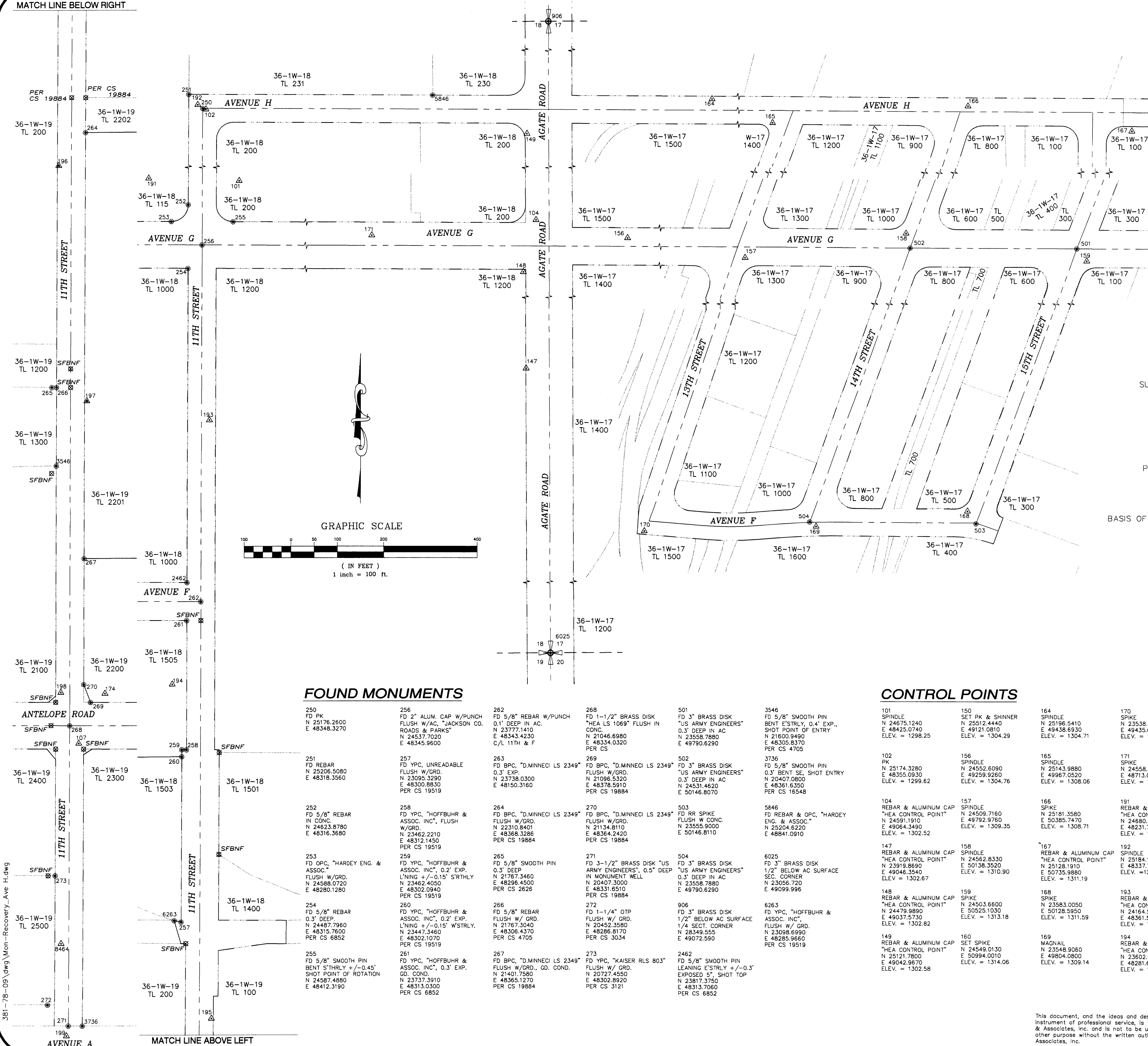


MATCH LINE BELOW RIGHT

**MAP OF SURVEY  
FOR  
HORIZONTAL CONTROL  
AND  
MONUMENT RECOVERY  
11TH AVENUE, AVENUE H,  
13TH, 14TH & 15TH STREETS  
SITUATED IN  
SECTION'S 17, 18 & 19, T36S, R1W, WM  
JACKSON COUNTY, OREGON**



**NARRATIVE**

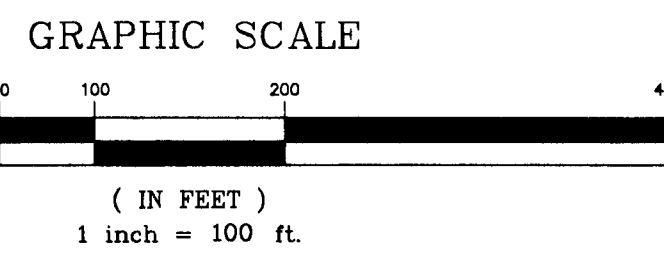
**SURVEY FOR:** URBAN RENEWAL AGENCY of JACKSON COUNTY  
10 SOUTH OAKDALE, ROOM #214  
MEDFORD, OR 97501

**PURPOSE:** TO LOCATE EXISTING MONUMENTATION WHICH MAY BE DISTURBED OR DESTROYED DURING IMPROVEMENTS ON PORTIONS OF 11TH STREET, AVENUE H, AVENUE G AND 13TH-15TH STREETS IN WHITE CITY, OR.

**PROCEDURE:** A CLOSED TRAVERSE WAS RUN TYING ALL FOUND PROPERTY CORNER MONUMENTS AND STREET MONUMENTS OF RECORD INTO OUR CONTROL NET. OUR PRIMARY CONTROL POINTS FOR THIS AREA ARE SHOWN ON THIS MAP.

**BASIS OF BEARINGS:** AGATE SUBDIVISION EXT. NO. 2  
COORDINATES ARE ASSUMED

**DATE:** AUGUST, 2009



**FOUND MONUMENTS**

- 250 FD PK N 25176.2600 E 48348.3270
- 251 FD REBAR N 25206.5080 E 48318.3560
- 252 FD 5/8" REBAR IN CONC. N 24623.8780 E 48316.3680
- 253 FD OPC, "HARDEY ENG. & ASSOC." FLUSH W/GRD. N 24588.0720 E 48280.1280
- 254 FD 5/8" REBAR 0.3" DEEP. N 24487.7960 E 48315.7600
- 255 FD 5/8" SMOOTH PIN BENT S'71RLY +/-0.45" SHOT POINT OF ROTATION. N 24587.4880 E 48412.3190
- 256 FD 2" ALUM. CAP W/PUNCH FLUSH W/AC. "JACKSON CO. ROADS & PARKS" N 24537.7020 E 48345.9600
- 257 FD YPC, UNREADABLE FLUSH W/GRD. N 23095.3290 E 48300.8830
- 258 FD YPC, "HOFFBUHR & ASSOC. INC.", FLUSH W/GRD. N 23462.2210 E 48312.1450
- 259 FD YPC, "HOFFBUHR & ASSOC. INC.", 0.2" EXP. L'NING +/-0.15" S'71RLY N 23462.4050 E 48302.0940
- 260 FD YPC, "HOFFBUHR & ASSOC. INC.", 0.2" EXP. GD. COND. N 23447.3460 E 48302.1070
- 261 FD YPC, "HOFFBUHR & ASSOC. INC.", 0.3" EXP. GD. COND. N 23737.3910 E 48313.0300
- 262 FD 5/8" REBAR W/PUNCH 0.1" DEEP IN AC. N 23777.1410 E 48343.4230
- 263 FD BPC, "D.MINNECI LS 2349" 0.3" EXP. N 23738.0300 E 48150.3160
- 264 FD BPC, "D.MINNECI LS 2349" FLUSH W/GRD. N 22310.8401 E 48368.3286
- 265 FD 5/8" SMOOTH PIN 0.3" DEEP N 21767.3460 E 48296.4500
- 266 FD 5/8" REBAR FLUSH W/GRD. N 21767.3040 E 48306.4370
- 267 FD BPC, "D.MINNECI LS 2349" FLUSH W/GRD., GD. COND. N 21401.7580 E 48365.1270
- 268 FD 1-1/2" BRASS DISK "HEA LS 1069" FLUSH IN CONC. N 21046.6980 E 48334.0320
- 269 FD BPC, "D.MINNECI LS 2349" FLUSH W/GRD. N 21096.5320 E 48378.5910
- 270 FD BPC, "D.MINNECI LS 2349" FLUSH W/GRD. N 21134.8110 E 48364.2420
- 271 FD 3-1/2" BRASS DISK "US ARMY ENGINEERS", 0.5" DEEP IN MONUMENT WELL N 20407.3000 E 48331.6510
- 272 FD 1-1/4" OTP FLUSH W/GRD. N 20727.4550 E 48286.8170
- 273 FD YPC, "KAISER RLS 803" FLUSH W/GRD. N 20727.4550 E 48302.8920
- 274 FD 5/8" SMOOTH PIN LEANING E'S71RLY +/-0.3" EXPOSED 5" SHOT TOP N 23817.3750 E 48313.7060

**CONTROL POINTS**

- 3546 FD 5/8" SMOOTH PIN BENT E'S71RLY, 0.4" EXP., SHOT POINT OF ENTRY N 21600.8490 E 48305.8370
- 3736 FD 5/8" SMOOTH PIN 0.3" BENT SE, SHOT ENTRY N 25174.3280 E 48355.0930
- 5846 FD REBAR & OPC, "HARDEY ENG. & ASSOC." N 25204.6220 E 48841.0910
- 6025 FD 3" BRASS DISK 1/2" BELOW AC SURFACE N 23056.720 E 49099.996
- 6263 FD YPC, "HOFFBUHR & ASSOC. INC." FLUSH W/GRD. N 23098.6990 E 48285.9660
- 2462 FD 5/8" SMOOTH PIN N 25121.7800 E 49042.9670
- 501 3" BRASS DISK "US ARMY ENGINEERS" 0.3" DEEP IN AC N 23558.7880 E 49790.6290
- 502 3" BRASS DISK "US ARMY ENGINEERS" 0.3" DEEP IN AC N 24531.4620 E 50146.8070
- 503 FD RR SPIKE FLUSH W/CONC. N 23555.9000 E 50146.8110
- 504 FD 3" BRASS DISK "US ARMY ENGINEERS" 0.3" DEEP IN AC N 23558.7880 E 49790.6290
- 906 FD 3" BRASS DISK 1/2" BELOW AC SURFACE 1/4 SECT. CORNER N 28349.555 E 49072.590
- 2462 FD 5/8" SMOOTH PIN LEANING E'S71RLY +/-0.3" EXPOSED 5" SHOT TOP N 23817.3750 E 48313.7060
- 101 SPINDLE N 24675.1240 E 48425.0740
- 102 PK N 25174.3280 E 48355.0930
- 104 REBAR & ALUMINUM CAP "HEA CONTROL POINT" N 24591.1910 E 49064.3490
- 147 REBAR & ALUMINUM CAP "HEA CONTROL POINT" N 23919.8690 E 49046.3540
- 148 REBAR & ALUMINUM CAP "HEA CONTROL POINT" N 24479.8990 E 49037.5730
- 149 REBAR & ALUMINUM CAP "HEA CONTROL POINT" N 25121.7800 E 49042.9670
- 150 SET PK & SHINNER N 25512.4440 E 49121.0810
- 156 SPINDLE N 24552.6090 E 49259.9260
- 157 SPINDLE N 24509.7160 E 49792.9760
- 158 SPINDLE N 24562.8330 E 50138.3520
- 159 SPIKE N 24549.0130 E 50994.0010
- 160 SET SPIKE N 24549.0130 E 50994.0010
- 166 SPIKE N 25181.3580 E 50385.7470
- 167 REBAR & ALUMINUM CAP "HEA CONTROL POINT" N 24164.5720 E 48361.5547
- 168 SPIKE N 23583.0050 E 50128.9500
- 169 MAGNAIL N 23548.9060 E 49804.0800
- 170 SPIKE N 23538.0660 E 49436.6930
- 171 SPIKE N 24558.2690 E 48713.0640
- 177 SPIKE N 25143.9880 E 49967.0520
- 179 REBAR & ALUMINUM CAP "HEA CONTROL POINT" N 25184.1278 E 50138.3520
- 181 REBAR & ALUMINUM CAP "HEA CONTROL POINT" N 24164.5720 E 48361.5547
- 184 REBAR & ALUMINUM CAP "HEA CONTROL POINT" N 23583.0050 E 50128.9500
- 186 MAGNAIL N 23548.9060 E 49804.0800
- 193 REBAR & ALUMINUM CAP "HEA CONTROL POINT" N 24164.5720 E 48361.5547
- 194 REBAR & ALUMINUM CAP "HEA CONTROL POINT" N 23583.0050 E 50128.9500
- 195 REBAR & ALUMINUM CAP "HEA CONTROL POINT" N 22868.9512 E 48366.2368
- 196 REBAR & ALUMINUM CAP "HEA CONTROL POINT" N 22240.2755 E 48310.9321
- 197 REBAR & ALUMINUM CAP "HEA CONTROL POINT" N 24558.2690 E 48713.0640
- 198 CHISEL "X" N 21117.7411 E 48315.1796
- 199 REBAR & ALUMINUM CAP "HEA CONTROL POINT" N 20385.9823 E 48327.5277
- 8464 REBAR & WASHER N 20582.6330 E 48315.6030

**LEGEND**

- △ CONTROL POINT AS NOTED
- FOUND SURVEY MONUMENT AS NOTED
- ⊙ MONUMENT SEARCHED FOR BUT NOT FOUND
- CS COUNTY SURVEY NUMBER
- CP CONTROL POINT
- FD FOUND MONUMENT
- T.L. TAX LOT NUMBER
- BPC BLUE PLASTIC CAP
- OPC ORANGE PLASTIC CAP
- RPC RED PLASTIC CAP
- YPC YELLOW PLASTIC CAP

**RECEIVED**  
Date: 9-2-09 By: [Signature]  
This survey consists of:  
1 sheet of Map  
2 pages of Narrative  
JACKSON COUNTY SURVEYOR

REGISTERED PROFESSIONAL LAND SURVEYOR  
Richard L. Bath  
JULY 30, 1976  
RICHARD L. BATH No. 1069  
RENEWS 12/31/09

**Hardey Engineering & Associates, Inc.**  
**HEA** ENGINEERING INTEGRITY  
P.O. BOX 1625  
MEDFORD, OREGON 97501-0124  
VOICE: 541-772-6880  
FAX: 541-772-9573  
EMAIL: info@heg-inc.com

This document, and the ideas and designs incorporated herein, as an instrument of professional service, is the property of Hardey Engineering & Associates, Inc. and is not to be used, in whole or in part, for any other purpose without the written authorization of Hardey Engineering & Associates, Inc.