

MAP OF SURVEY

FOR PROPERTY LINE ADJUSTMENT
SITUATED IN THE SE1/4 OF SECTION 34, T36S, R4W WM,
JACKSON COUNTY, OREGON

LEGEND



SCALE
1" = 100'

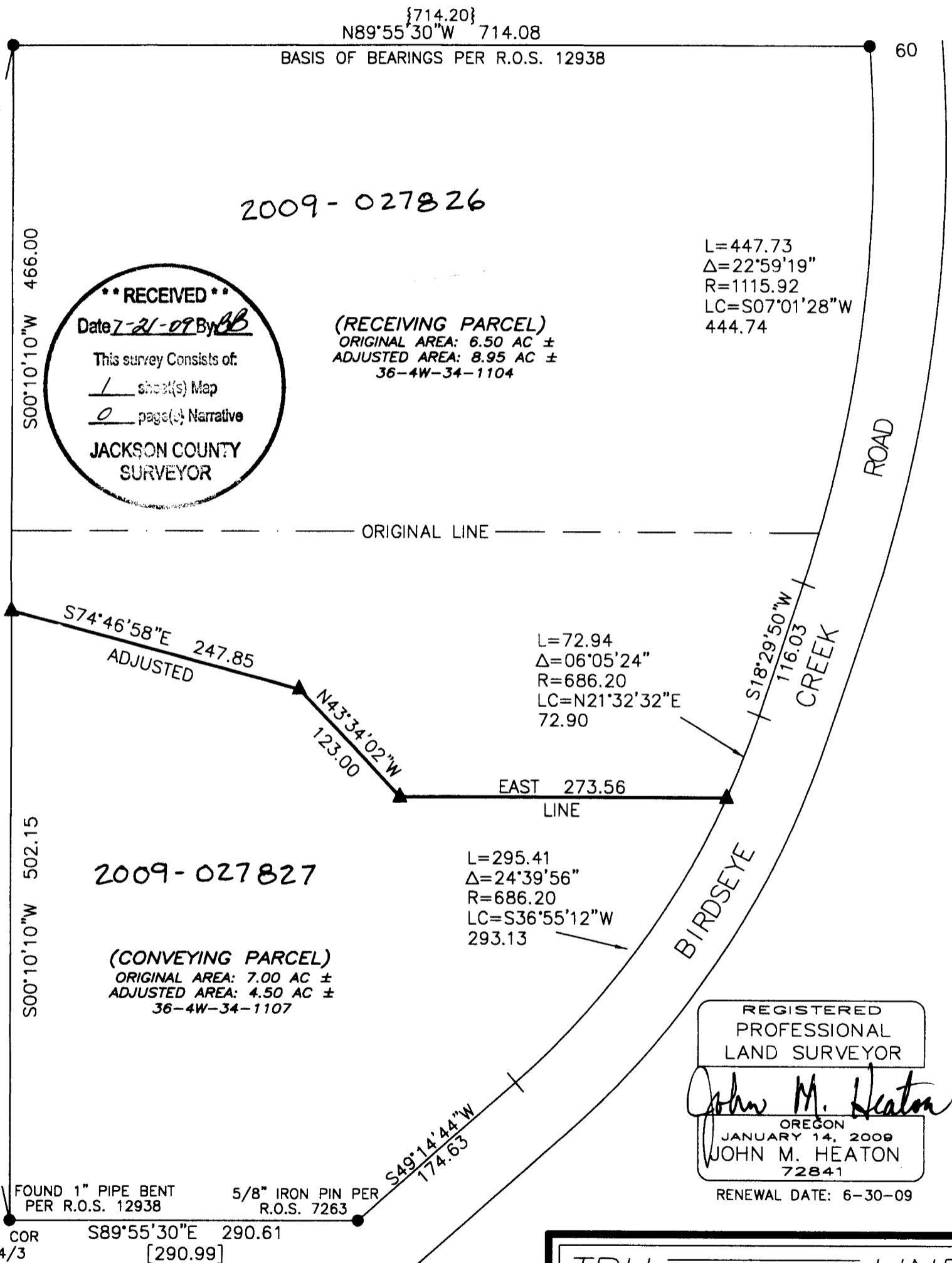
APPROVED BY THE JACKSON COUNTY
PLANNING DIRECTOR THIS 13
DAY OF July, 2009.
FILE #SUB200800047

Janece M. D.
JACKSON COUNTY DEVELOPMENT SERVICES

- ▲ SET 5/8" X 30" IRON PIN WITH TRU-LINE SURVEYING INC. PLASTIC CAP
- FOUND 5/8" IRON PIN WITH D.A. EDWARDS LS 2339 PLASTIC CAP PER R.O.S. 12938 UNLESS OTHERWISE NOTED

{XXX} RECORD BEARING AND/OR DISTANCE PER R.O.S. 12938

[XXX] RECORD BEARING AND/OR DISTANCE PER R.O.S. 7263



NARRATIVE

THE ADJUSTED LINE OF THIS PROPERTY LINE ADJUSTMENT WAS SURVEYED AS REQUIRED BY THE CONDITION OF APPROVAL. MONUMENTS FOUND FROM R.O.S. 12938 AND 7263 WERE USED FOR CONTROL TO SET THE MONUMENTS AS SHOWN.

TAX LOT #'S: 36-4W-34-1107/36-4W-34-1104

DOCUMENT # _____

TRU SURVEYING INC. LINE

2333 SUMMERS LANE
KLAMATH FALLS, OREGON 97603

SURVEYED FOR	TEAMER SCOTT	
SURVEYED BY	J.M.H. & C.B.F.	4/09
MAPPED BY	C.B.F.	4/09
CHECKED BY	J.M.H.	4/09