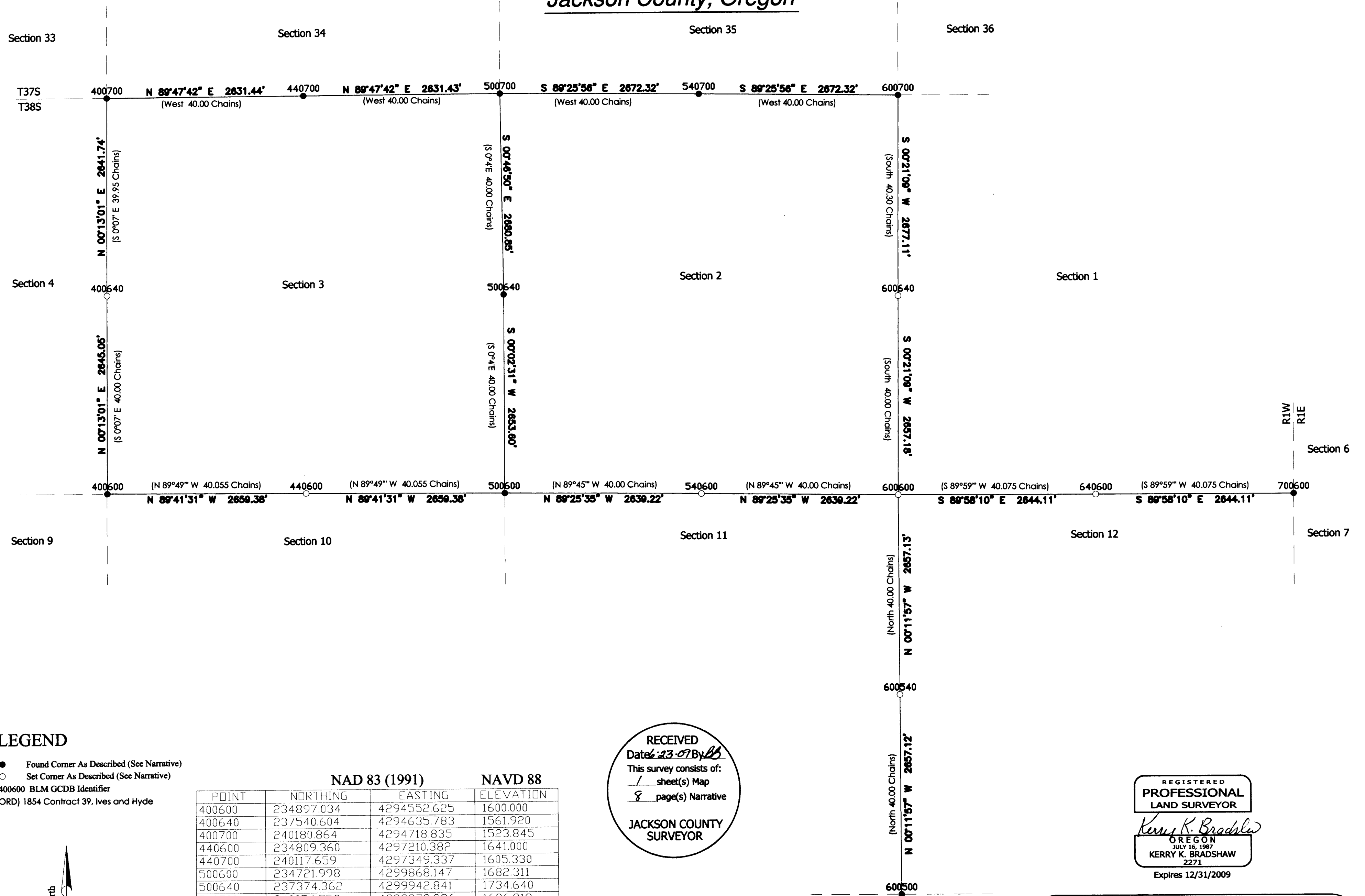


# Map of Survey

Located in T38S R1W, W.M. Sections 1, 2, 3, 4, 9, 10, 11, 12, 13, 14  
Jackson County, Oregon



### LEGEND

- Found Corner As Described (See Narrative)
  - Set Corner As Described (See Narrative)
- 400600 BLM GCDB Identifier  
(GLO RECORD) 1854 Contract 39, Ives and Hyde



Scale: 1"=1000'

T38S R1W Sections 1, 2, 3, 4, 9, 10, 11, 12, 13, 14

POINT	NAD 83 (1991)		NAVD 88
	NORTHING	EASTING	ELEVATION
400600	234897.034	4294552.625	1600.000
400640	237540.604	4294635.783	1561.920
400700	240180.864	4294718.835	1523.845
440600	234809.360	4297210.382	1641.000
440700	240117.659	4297349.337	1605.330
500600	234721.998	4299868.147	1682.311
500640	237374.362	4299942.841	1734.640
500700	240054.759	4299979.836	1686.819
540600	234623.387	4302505.325	1894.380
540700	239955.178	4302650.093	1924.910
600500	229212.745	4305016.517	1796.650
600540	231868.918	4305079.513	1950.000
600600	234525.083	4305142.511	2106.450
600640	237180.542	4305231.091	2134.730
600700	239855.912	4305320.331	2163.009
640600	234451.945	4307785.332	2445.530
700600	234379.116	4310428.161	2782.613

RECEIVED  
Date: 2-23-09 By: *[Signature]*  
This survey consists of:  
1 sheet(s) Map  
8 page(s) Narrative

**JACKSON COUNTY  
SURVEYOR**

Basis of Bearing: Geodetic North per NAD 83 (1991)  
Elevations are orthometric heights based on NAVD 88 and Geoid 03  
Bearings shown are mean geodetic bearing per line  
Distances shown at mean ground elevation per line  
All distances and elevations are International Feet

REGISTERED  
**PROFESSIONAL  
LAND SURVEYOR**

*Kerry K. Bradshaw*  
OREGON  
JULY 16, 1987  
KERRY K. BRADSHAW  
2271  
Expires 12/31/2009

**Jackson County Surveyor**  
Kerry Bradshaw (541) 774-6191 Medford, OR 97501

Field work was performed between: 3/14/07 and 4/10/09	CS Job File: T38S R1W S2-S3 2009
Field Crew: SDF, SMB	Reviewed By: SMB 4/14/09 KKB 4/16/09
Drawn By: SDF 4/13/09	Approved: KKB 5/05/09
	381W 2_3.dwg

20414

REGISTERED  
PROFESSIONAL  
LAND SURVEYOR

*Kerry K. Bradshaw*

OREGON  
JULY 16, 1987  
KERRY K. BRADSHAW  
2271

Expires 12/31/2009

RECEIVED  
Date 6-23-09 By AB  
This survey consists of:  
1 sheet(s) Map  
8 page(s) Narrative  
JACKSON COUNTY  
SURVEYOR

**600600** A thorough search was made for any original corner evidence, none was found. A survey by A.T. Brown dated 9/15/1913 of Campbell Road (also known as Campbell-Graffis Road), per the Jackson County Surveyor's records field book 61, pages 60, 61, 64,65, 66 was thoroughly analyzed. Brown's 1913 survey located Campbell Road by stationing with reference to DLC 84 SW and DLC 84 SE, T38S R1W; quarter corner common to sections 2 and 3 (500640), T38S R1W; section corner common to sections 1,2,11,12 (600600), T38S R1W. At station 125+75.2 a pipe was set per page 65 of book 61, this pipe was thoroughly searched for and not found. The notes also called for a two course direction and distance from station 145+75 to 600600 on page 65 of book 61. Discrepancies between the stationing and traverse information on Brown's survey resulted in two positions for the pipe and thus two positions for the section corner. All positions were searched for in the field and yielded no evidence. No monumentation was tied after the aforementioned pipe and no public land corners were located beyond this lost section corner which results in an indeterminable location of where Brown's survey ended. A valiant effort was made to locate any evidence of Campbell road beyond its modern day location. Historic aerial photos were reviewed and a substantial amount of time was spent trying to locate evidence in the field. No definitive locus could be determined using Brown's 1913 survey. The original GLO notes of Ives and Hyde 1854 survey make a topographic call of .75 chains south of 600600 to a spring branch 2 lks. wide, course SW. This topographic call was analyzed, however not utilized due to a significant change to the spring branch east of the section corner position as a result of orchard construction. The final determination for this section corner was that it was lost, and therefore double proportioned between 600700 and 600500 (north-south) and 700600 and 500600 (east-west) relative to the 1854 Ives and Hyde GLO Survey. At this position set a 2 inch diameter flanged GIP with a 3 inch diameter brass cap. MKD:

JACKSON COUNTY SURVEYOR

T38S R1W

$\frac{2}{11} \frac{1}{12}$   
2009

UNLAWFUL TO DISTURB

**640600** A thorough search was made for any original evidence of the corner or supplemental information, and none was found, therefore corner was determined to be lost and was set at a single proportion position relative to Ives and Hyde 1854 GLO survey, between 600600 and 700600. Set a 2 1/2 inch diameter brass cap cemented in a sandstone outcrop. MKD:

JACKSON COUNTY SURVEYOR

T38S R1W

$\frac{1}{4} S \frac{1}{12}$   
2009

UNLAWFUL TO DISTURB

**540700** Found 3 inch diameter brass cap, flush with surface, per the Jackson County Surveyor's first re-establishment. MKD:

JACKSON COUNTY SURVEYOR  
 T37S R1W  
 $\frac{1}{4}$  S  
 $\frac{35}{2}$   
 T38S  
 2008  
 UNLAWFUL TO DISTURB

**600700** Found 1 ½ inch diameter aluminum cap on a 5/8 inch diameter rebar, per the Jackson County Surveyor's office per fourth reestablishment, mkd: Jackson County Surveyor. Also associated witness monument, a 3 inch diameter brass cap. MKD:

JACKSON COUNTY SURVEYOR  
 T37S R1W  
 $\frac{S35|S36}{S2|S1}$   
 WIT. T38S MON.  
 2003

**Corners Set This Survey**

**600540** A thorough search was made for any original evidence of the corner or supplemental information, and none was found, therefore corner was determined to be lost and was set at a single proportion position relative to the Ives and Hyde 1854 GLO survey, between 600500 and 600600. Set a 2 inch diameter flanged GIP with a 3 inch diameter brass cap, 9 inches below the surface. MKD:

JACKSON COUNTY SURVEYOR  
 T38S R1W  
 $\frac{1}{4}$  S  
 $\frac{11|12}{2009}$   
 UNLAWFUL TO DISTURB

**600640** A thorough search was made for any original evidence of the corner or supplemental information, and none was found, therefore corner was determined to be lost and was set at a single proportion position relative to Ives and Hyde 1854 GLO survey, between 600600 and 600700. Set a 2 inch diameter flanged GIP with a 3 inch diameter brass cap. MKD:

JACKSON COUNTY SURVEYOR  
 T38S R1W  
 $\frac{1}{4}$  S  
 $\frac{2|1}{2009}$   
 UNLAWFUL TO DISTURB

**400600** Found 3 inch diameter brass cap on a 2 inch diameter GIP, 3 inches below the surface per the Jackson County Surveyor's first re-establishment. MKD:

JACKSON COUNTY SURVEYOR

T38S R1W

$$\begin{array}{r|l} 4 & 3 \\ \hline 9 & 10 \end{array}$$

2009

UNLAWFUL TO DISTURB

**500640** Found 2 ½ inch diameter brass cap on a 1 inch diameter GIP, exposed 4 inches above the surface per the Jackson County Surveyor's re-establishment. MKD:

T38S R1W

$$\frac{1}{4} \begin{array}{r|l} 3 & 2 \\ \hline & \text{COR.} \end{array}$$

C.S.

1971

**400700** Found 2 ½ inch diameter brass cap, 2 inches below the surface, per the Jackson County Surveyor's first re-establishment. MKD:

T37S R1W

$$\begin{array}{r|l} 33 & 34 \\ \hline 4 & 3 \end{array}$$

CS

1993

**440700** Found 3 inch diameter brass cap, flush with surface, per the Jackson County Surveyor's first re-establishment. MKD:

JACKSON COUNTY SURVEYOR

T37S R1W

$$\begin{array}{r|l} \frac{1}{4} S & 34 \\ \hline & 3 \end{array}$$

T38S

2008

UNLAWFUL TO DISTURB

**500700** Found 2 ½ inch diameter brass cap, flush with surface, per the Jackson County Surveyor's first re-establishment MKD:

JACKSON COUNTY

T37S R1W

$$\begin{array}{r|l} 34 & 35 & 1981 \\ \hline 3 & 2 & \end{array}$$

T38S

**Corners Found This Survey**

**600500** Found 2 ½ inch diameter brass cap on a 1 inch diameter GIP, 6 inches below the surface per the Jackson County Surveyor's first re-establishment. MKD:

Jackson County Surveyor

T38S R1W

11|12

14|13

2008

**700600** Found 2 ½ inch diameter brass cap on a 1 inch diameter GIP, flush with surface, per the Jackson County Surveyor's first re-establishment. MKD:

T38S

R1W R1E

1|6

12|7

CS

1969

**500600** Found 2 ½ inch diameter brass cap, 2 inches below the surface per the Jackson County Surveyor's first re-establishment. MKD:

T38S R1W

3|2

10|11

CS

1994

This corner was originally set by L.E. Ager PLS No. 21 during the course of survey No. 3660 on file in the Jackson County Surveyor's office. Ager's survey reports finding a stone with "x" on top, and claims said stone monument related well to deed record and property line fences indicating it had been used for corner control on prior surveys. To preserve this position the Jackson County Surveyor's office recovered the stone monument in 1994 and perpetuated the position as described in the first re-establishment. Extensive survey analysis was performed to determine the validity of Ager's section corner. Its relationship to found original corners and restored corners east-west and north-south was found to be within the limits of acceptability of the 1854 Ives and Hyde GLO survey. In addition Ager's position for the section corner has not be refuted since 1968 and has been utilized by residents in the area. For these reasons the position determined by Ager during the course of survey No. 3660 and subsequently perpetuated by the Jackson County Surveyor was accepted during the course of this survey and used as a controlling corner.

Redundant observations were made and vector data was collected with quality control information to verify positional accuracy requirements.

4. Terrestrial observations were made utilizing a Trimble 5600 robotic total station. These observations were made in areas where the use of GPS was limited due to overhead canopy. In these instances GPS control was established in the locale and closed traverse was performed with redundant observations. The integrity of the terrestrial measurements was verified for positional accuracy requirements via a minimally constrained least squares adjustment in Liscad SEE.

**Horizontal control stations utilized during the course of this survey:**

**NGS:**

Ash, Hyatt Dam, Agate Dam RP 1-1

**Jackson County Surveyor:**

157, Talent, Pumice

Established for this survey: Baldy, Center

**CORS:**

Justice 2 (Jackson County Surveyor)

Ashland, Central Point (ODOT)

**Vertical control stations utilized during the course of this survey:**

**NGS:**

NZ0183A, V548, A760

**Survey Control Requirements**

Horizontal accuracy requirements for all locations within this survey met or exceeded NGS Class B standards for GPS positioning and Second Order Class II standards for terrestrial measurements.

**Corner Reestablishment**

Latitude calculations were performed on the arc of the true meridian. Departure calculations were performed on the arc of the true parallel. Calculations for lost corners were geodetically reduced using Cadastral Measurement Management (CMM) V7.148 and verified via hand calculation. Note that a single combined scale factor was not utilized for this project; a mean was utilized per each line. Bearings shown on the plat are the mean geodetic and distances shown are mean elevation per line. For specific monumentation details and associated accessories please refer to the Jackson County Surveyor's public land corner reestablishment records as noted. All corners found and set are filed in the Jackson County Surveyor's corner reestablishment records.

**Survey Narrative****To comply with Oregon Revised Statutes Paragraph 209.250**

**Survey By:** Jackson County Surveyor  
10 S. Oakdale, RM 318A  
Medford, OR 97501

**Date of Survey:** 3/14/07 to 4/10/09

**Location:** T38S R1W, W.M. Sections 1,2,3,4,9,10,11,12,13,14

**Purpose:** To restore lost public land corners in accordance with Oregon Revised Statutes and BLM Manual of Survey Instructions 1973 edition. To determine geodetic positions of public land corners and State Plane coordinates per the North American Datum of 1983 (1991 Adjustment).

**Procedure:** The following equipment was utilized; Trimble 5800 GPS receiver, Trimble 5700 GPS Receiver, Trimble R6 GPS Receiver, Trimble TSC2 Data Collector with survey controller software. Positions were determined using the following methods:

1. Static observations utilizing Trimble 5700 GPS as a base station located in the field at a geodetic control station per the NGS and Jackson County Surveyor's control network. The Jackson County Surveyor's CORS station. Oregon Department of Transportation CORS stations Ashland and Central point with NAD 83 (1991) positions as determined by the Jackson County Surveyor's Office. All static observations were redundant utilizing a minimum of two base stations and a rover. Data was post processed in Trimble Geomatics Office and verified for positional accuracy requirements with a minimally constrained least squares adjustment.
2. Real Time Kinematic observations utilizing a Trimble 5700 GPS with a Trimark 3 Radio as a base station located at a NGS or Jackson County Surveyor's geodetic control station in the field. The Jackson County Surveyor's CORS station correction broadcast was transmitted via a cellular phone modem. All observations were redundantly made utilizing a minimum of two control stations. Quality control data was collected with each RTK vector and the converging vectors were post processed in Trimble Geomatics Office. Data was verified for positional accuracy requirements with a minimally constrained least squares adjustment.
3. Wide Area RTK / VRS RTK via Oregon Department of Transportation's "Oregon Real Time GPS Network" (ORGN), Southern Oregon Network. The correction broadcast was received through a cellular phone modem. A seven parameter coordinate transformation surrounding the project area was performed in order to operate on the NAD 83 (1991) projection as the ORGN broadcasts a corrector per NAD 83 (CORS 1996)(Epoch 2002). Control utilized was provided by the NGS and Jackson County Surveyor's Office. The coordinate transformation was performed in Trimble Geomatics Office and verified for accuracy.