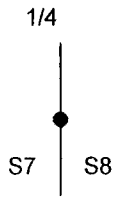


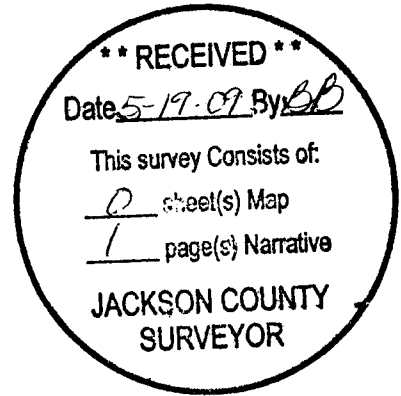
OREGON CORNER RESTORATION FORM

Section 8 Township 35 Range 2 E
County Jackson Date 4/4/09

Corner Designation



- Condition Report Only
- Not Found
- Renewed
- Unrecorded
- Surveyed In
- Referenced Out

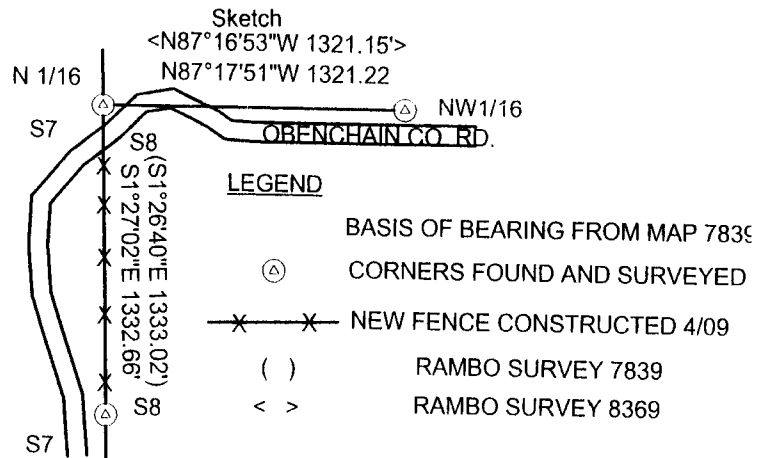
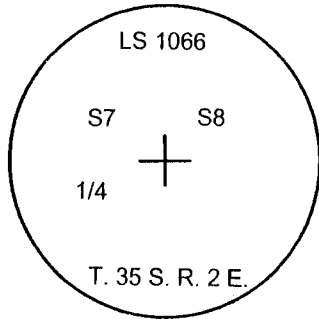


Previous Renewals/Surveys, etc. RAMBO SURVEYS 7839

Monument(s) & Accessories Found: (Condition and Source)
FOUND IRON ROD WITH 1 1/2" ALUMINUM CAP

- 6" OAK BEARS S76 3/4°E 49.2 FEET (UNRECORDED B. T.) HEALED DOUBLE BLAZES WE TAG
- 7" OAK BEARS N78°E 44.1 FEET (UNRECORDED B. T.) HEALED DOUBLED BLAZES WE TAG
- 11" OAK BEARS N19 1/4°W 42.5 FEET (UNRECORDED B. T.) HEALED DOUBLED BLAZES WE TAG
- 21" PINE BEARS S70°W 35.6 FEET (RECORD S70°W 35.9 FEET) HEALED DOUBLE BLAZES & TAG
- DID NOT FIND ANY EVIDENCE OF 9" PINE S60 1/2°E 12.97 FEET

Monument Detail



Monument Set (Procedures and Description)

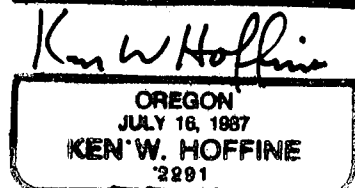
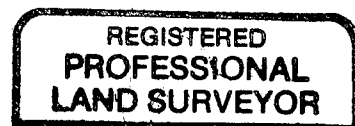
New Accessories

Location & Comments

Surveyor's Seal

Corner lies below ground in new fence line. a 18" x 10" x 10" stone is on top of corner.

Compass Bearing 19°
 Firm/Agency Lone Rock Timber Co.
 Address P. O. Box 1127
Roseburg, Ore. 97470
 Party Chief Ken W. Hoffine
 Notes Gary Angiolet
 Witness Ignacio Roman



Expires 6-30-09