

OREGON CORNER RESTORATION FORM

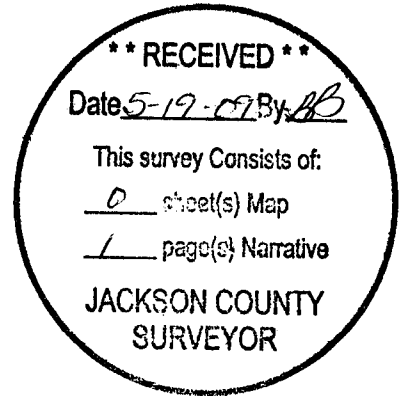
20387

Section 8 Township 35 Range 2 E
 County Jackson Date 4/4/09

Corner Designation _____



- _____ Condition Report Only
- _____ Not Found
- X Renewed
- X Unrecorded
- X Surveyed In
- X Referenced Out



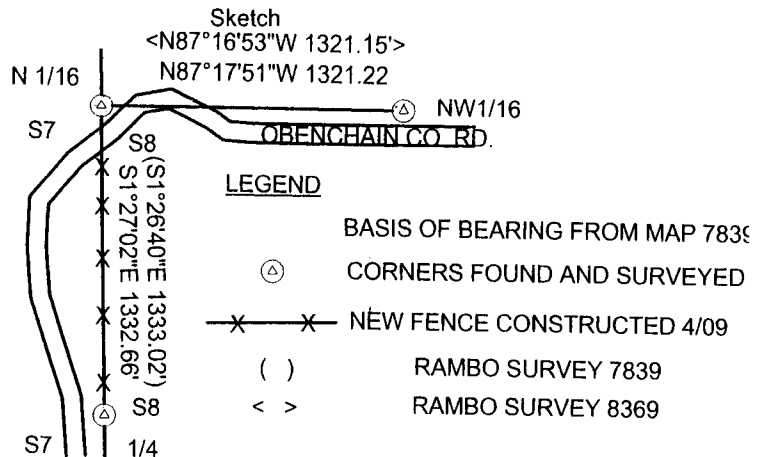
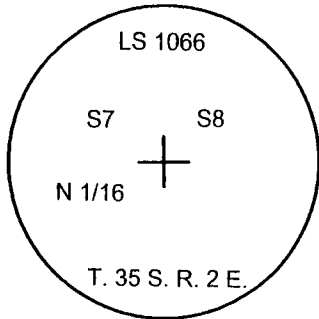
Previous Renewals/Surveys, etc. _____

RAMBO SURVEYS 7839

Monument(s) & Accessories Found: (Condition and Source)

FOUND IRON ROD WITH 1 1/2" ALUMINUM CAP
 12 " OAK BEARS S53 1/4°W 88.9 FEET HEALED DOUBLE BLAZES AND TAG
 1" IRON BAR BEARS S83°E13.34 FEET (RECORD S82°14'27"E 13.13 FEET)

Monument Detail



Monument Set (Procedures and Description)

New Accessories

11" Douglas Fir bears S53 3/4°E 23.1 Ft. We Scribe NW1/16 S8 BT And Tag

Location & Comments

Corner lies approx. 70 ft. north
 of obenchain county road
 in mound of stones.

Compass Bearing 19°
 Firm/Agency Lone Rock Timber Co.
 Address P. O. Box 1127
Roseburg, Ore. 97470
 Party Chief Ken W. Hoffine
 Notes Gary Angiolet
 Witness Ignacio Roman

Surveyor's Seal

