

OREGON CORNER RESTORATION FORM

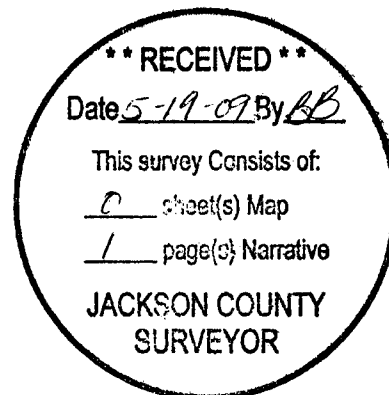
Section 9 Township 35 Range 2 E

County Jackson Date 4/4/09

Corner Designation _____

PROPERTY CORNER

- _____ Condition Report Only
- _____ Not Found
- Renewed
- _____ Unrecorded
- Surveyed In
- Referenced Out



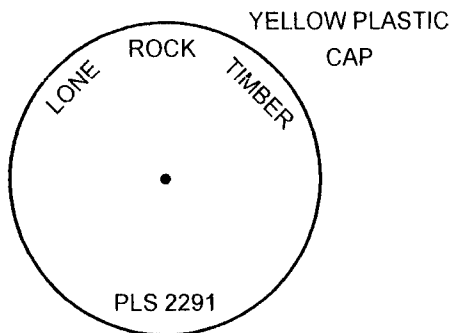
Previous Renewals/Surveys, etc.

HOFFINE FEB. 2001 SURVEY

Monument(s) & Accessories Found: (Condition and Source)

FOUND 5/8" IRON ROD WITH YELLOW PLASTIC CAP PULLED OUT BY UPROOT OF 30" DOUG FIR
14" DOUG FIR STUMP CUT OFF BELOW FACE BY MECHANICAL MACHINE BEARS S62 1/4°E AS PER RECORD

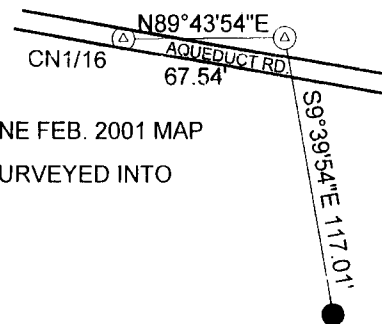
Monument Detail



Sketch

LEGEND

- △ BASIS OF BEARING FROM HOFFINE FEB. 2001 MAP
- △ CORNERS FOUND AND SURVEYED INTO
- CORNER RESET



Monument Set (Procedures and Description)

RESET EXISTING 5/8" X40" IRON ROD BY BACK SIGHTING THE CN1/16 TH CORNER AND OCCUPIED PROPERTY CORNER (17) FROM HOFFINE FEB. 2001 MAP AND TURNING FIELD ANGLE TO CORNER POSITION.

New Accessories

9" DOUG FIR BEARS N71 1/4°E 24.4 FEET WE SCRIBE BT AND TAG

Location & Comments

Corner lies at ground level
on south edge of dirt pile from
uprooted tree. Put metal fence
post approx. 1.0 ft. south of
corner.

Compass Bearing 19°
 Firm/Agency Lone Rock Timber Co.
 Address P. O. Box 1127
Roseburg, Ore. 97470
 Party Chief Ken W. Hoffine
 Notes Gary Angiolet
 Witness Ignacio Roman

Surveyor's Seal

