

DEDICATION

FOOTHILL SUBDIVISION
LOCATED IN SECTION 16, T.37 S., R.1 W., W.M.
JACKSON COUNTY, OREGON

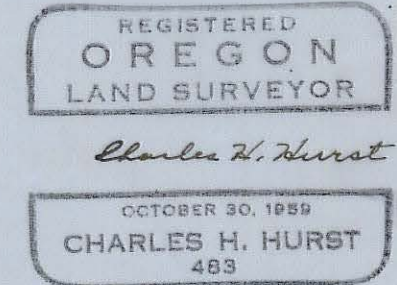
STATE OF OREGON } ss
COUNTY OF JACKSON

I, CHARLES H. HURST, A DULY REGISTERED SURVEYOR IN THE STATE OF OREGON, BEING FIRST SWORN, DO HEREBY CERTIFY THAT I HAVE CORRECTLY SURVEYED AND MARKED WITH PROPER MONUMENTS AS PROVIDED BY LAW THE TRACT OF LAND HEREON SHOWN AND THE SAID PLAT IS A CORRECT REPRESENTATION OF THE SAME LAND AND THE FOLLOWING IS AN ACCURATE DESCRIPTION OF THE BOUNDARY LINES. COMMENCING AT THE ONE QUARTER CORNER COMMON TO SECTIONS 16 AND 21, TOWNSHIP 37 SOUTH, RANGE 1 WEST OF THE WILLAMETTE MERIDIAN, THENCE S 89°40'35"E FOR A DISTANCE OF 37.79 FEET, THENCE N 0°04'05"W FOR A DISTANCE OF 378.03 FEET TO THE TRUE POINT OF BEGINNING, THENCE S 89°59'00"E FOR A DISTANCE OF 75.68 FEET, THENCE N 49°48'25"E FOR A DISTANCE OF 124.12 FEET, THENCE N 0°04'05"W FOR A DISTANCE OF 205.33 FEET, THENCE N 35°44'50"E FOR A DISTANCE OF 170.00 FEET, THENCE N 54°15'10"W FOR A DISTANCE OF 767.31 FEET, THENCE N 73°45'55"W FOR A DISTANCE OF 128.38 FEET, THENCE S 0°04'05"E FOR A DISTANCE OF 807.40 FEET, THENCE S 89°59'00"E FOR A DISTANCE OF 475.36 FEET TO THE TRUE POINT OF BEGINNING.

SUSCRIBED AND SWORN TO ME THIS 24th DAY OF August, 1962.

Charles H. Hurst
SURVEYOR

NOTARY PUBLIC FOR OREGON
MY COMMISSION EXPIRES THE 15th DAY OF Feb. 1965



KNOW ALL MEN BY THESE PRESENTS THAT WE Frank W. Catalano
John B. Catalano ARE THE OWNERS IN FEE SIMPLE OF THE LANDS HEREON DESCRIBED AND THAT WE HAVE SUBDIVIDED THE SAME INTO LOTS, BLOCKS, AND STREETS AS SHOWN HEREON, AND THE NUMBER AND SIZE OF THE LOTS AND THE LENGTH OF ALL LINES ARE PLAINLY SET FORTH, AND THAT THIS PLAT IS A CORRECT REPRESENTATION OF THE SAID SUBDIVISION, AND WE DO HEREBY DEDICATE TO THE PUBLIC FOR PUBLIC USE ALL STREETS AS SHOWN HEREON, AND WE DO HEREBY DESIGNATE SAID SUBDIVISION AS FOOTHILL SUBDIVISION.

IN WITNESS WHEREOF WE HAVE SET OUR HANDS AND SEALS THIS 27th DAY OF August, 1962.

Frank W. Catalano
John B. Catalano

STATE OF OREGON } ss
COUNTY OF JACKSON

August 27th AD 1962
PERSONALLY APPEARED THE ABOVE NAMED Frank W. Catalano & John B. Catalano AND ACKNOWLEDGED THE FOREGOING INSTRUMENT TO BE THEIR VOLUNTARY ACT AND DEED. BEFORE ME Alpha Oppenbacher
NOTARY PUBLIC FOR OREGON
MY COMMISSION EXPIRES THE 25th DAY OF August 1966

EXAMINED AND APPROVED BY THE JACKSON COUNTY PLANNING COMMISSION IN REGULAR SESSION THIS 12th DAY OF September 1962.

ATTEST Donald T. Latham SECRETARY
Johnny PRESIDENT

EXAMINED AND APPROVED BY THE WEDFORD IRRIGATION DISTRICT IN REGULAR SESSION THIS 4th DAY OF September 1962.

ATTEST J. A. Applegate SECRETARY
Albert H. Hennessey PRESIDENT

EXAMINED AND APPROVED THIS 1th DAY OF September 1962.

Shad W. Hatten
COUNTY ASSESSOR

ALL TAXES PAID IN FULL TO DATE THIS THE 7th DAY OF Sept. 1962.

Paul Battial
COUNTY SHERIFF

EXAMINED AND RECOMMENDED FOR APPROVAL BY THE COUNTY COURT THIS 24th DAY OF SEPT. 1962.

Mark E. Joyden
COUNTY SURVEYOR

FOR ORDER OF THE COUNTY COURT APPROVING THIS PLAT SEE VOLUME PAGE OF COUNTY COMMISSIONERS' JOURNAL OF PROCEEDINGS.

Emm Adell
COUNTY CLERK

550295

FILED FOR RECORD THIS THE 28th DAY OF September 1962 AT 11:38 O'CLOCK A.M. AND RECORDED IN VOLUME 9 OF PLATS AT PAGE 14 OF RECORDS OF JACKSON COUNTY

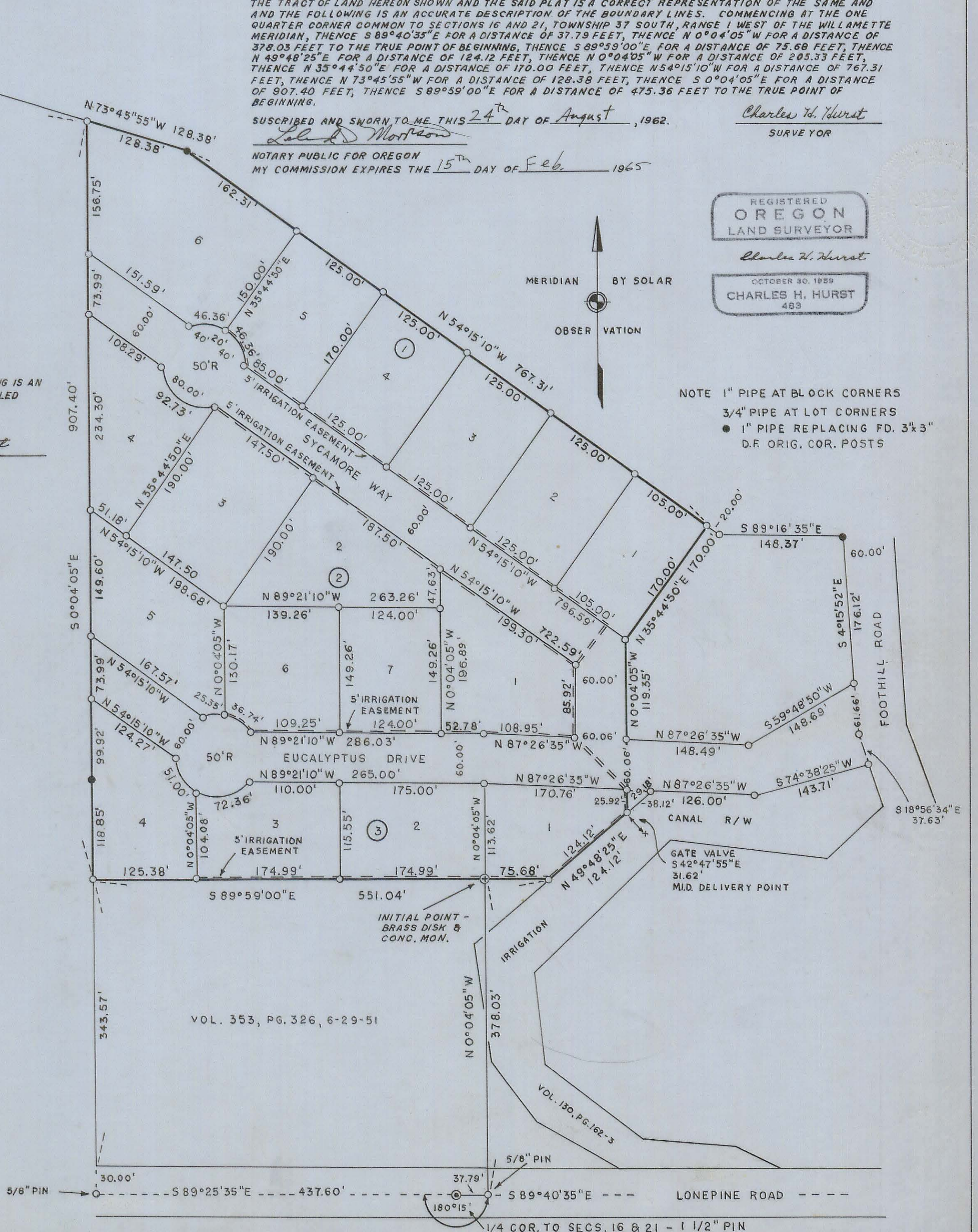
Emm Adell
COUNTY CLERK

BY DEPUTY

SCALE 1"=100'

I HEREBY CERTIFY THAT THIS TRACING IS AN EXACT COPY OF THE ORIGINAL PLAT FILED WITH THE COUNTY CLERK.

Charles H. Hurst
SURVEYOR



Survey narrative to comply with ORS 209.250 and 209.120 and the Jackson County Subdivision Ord.

Survey for: Frank W. Catalano (Subdivider)
Rte. 3, Rox 115, Foothill Road
Medford, Oregon

Survey by : Charles H. Hurst
765 Sunrise Avenue
Medford, Oregon

Basis of bearing: Solar observation from south line of block 1

Equipment of survey: Six second optical transit, 100 and 300 foot steel tapes and tension handle.

Precedence of survey: To recover or re-establish and mark the boundary lines of a portion of Lot 16, Stewart Acres Subdivision, said portion then being subdivided into lots and blocks to be known as Foothill Subdivision.

Procedure of survey: Located the one quarter corner common to Sections 16 and 21, T. 37 S., R. 1 W., W.M., thence chained west to the southwest corner of Section 16 a distance of 2654.36 feet, this distance was then prorated against the record distance of 2657.8 feet for the Stewart Acres Subdivision to determine the location of the southwest corner of Lot 16, said corner being a record distance of 438.0 feet West and 30 feet north of the aforementioned quarter corner and a prorated distance of 437.43 feet at which location a temporary point was set 30 feet south at the centerline of Lone Pine Road. In an attempt to resurrect the west line of Lot 16, a search was made adjacent to the anchor posts on the fence line along the north boundary at Lot 16. A Douglas fir 3 x 3 tapered post point was discovered at a depth of one foot preserved in muck at the angle point S 73°36' E - S 54°06' E. Another 3 x 3 post point was discovered at the northwest corner of Lot 16. This point was covered by two feet of muck. The distance between these points was measured at 608.12 feet as opposed to a record distance of 609.0 feet. These points thus being considered original subdivision posts were perpetuated by 1" x 30" iron pipe.

In order to determine the point of intersection with the north boundary thus established and a projection on a portion of the west boundary of Lot 16 (N 0°01' E), the triangle thus formed with the line N 26°29' W was computed on the basis of record distances and the distance from the point of intersection to the aforementioned angle point was determined to be 128.57 feet which was then prorated against the actual measured distance and found to be 128.38 feet at which point a 1" x 30" pipe was set at the base of an anchor post at a fence junction on the line between the two found subdivision posts. A 15 foot offset line was then established and run south parallel to the fence. At a distance of 788.55 feet south, a 3 x 3 post point was discovered 14.72 feet east buried 2 feet deep in muck with a 1½ x 1½ Douglas fir pointed hub along-side. This hub was held as the corner point and perpetuated with a 1" x 30" pipe. Measurement continued south to a point 452.32 feet west of the 1/4 corner. Holding the two pipes on the west line at a 14.72 foot offset places the line of intersection at 437.60 feet west of the corner, a distance of 0.17 feet further west than the prorated temporary

point previously mentioned. The intersection thus made was monumented by a 5/8" x 24" pin.

Additional search along the north line of Lot 16 revealed a 1" pipe at the angle point S 54°06' E - S 89°37' E and another 3 x 3 post point 2 feet in muck at the anchor post at the northeast corner. The iron pipe was held since inquiry revealed that it has apparently remained uncontested for an undetermined period of time, is within a foot of an anchor post, and a thorough search revealed no original post to refute the pipe location. Pipe to post measured 148.69 feet as against an original plat distance of 149.1 feet. The line S 54°06' E measured 787.31 feet as against plat distance of 787.4 feet. This post was replaced by a 1" pipe from which another 1" pipe was found approximately 0.75 feet northeast.

The west boundary of the irrigation canal was held at record distance from the one quarter corner and record angles from the section line with error of closure in the last distance closing on the west right-of-way line of Foothill Road, said right-of-way being determined by coordinate computation based on a prorated distance of 791.59 feet as against a plat distance of 793.0 feet to the southeast corner of Lot 16. This prorated distance was determined on the basis of a plat distance of 2647.0 feet and a measured distance of 2642.28 feet from Bergmann survey No. 709 from the south 1/4 corner of Section 16 to the southeast corner of Section 16. Coordinate error of closure against record along Foothill Road North from the southeast corner of Lot 16 to the original post found at the northeast corner of the Catalano property was proportioned in courses and distances along Foothill Road.

The excluded parcel is first recorded in Volume 353, Page 326. This land was surveyed and sold in 1951 according to a Mrs. Hart, former owner of the entire parcel. This survey is not recorded, but the north monuments set at that time were found. Accordingly, the line between was held with the southwest corner of the subdivision set 0.38 feet west of a 3/4" pipe and the southeast corner set 0.87 feet west of a 1/2" pipe. Sideline control indicated by the 1951 monuments, being at variance with this survey, was not held.

A 1 1/4" pipe was also found in a highly canted position approximately 1.50 feet west of the angle point on the east boundary of the Catalano property. This pipe was returned to vertical position but otherwise, no significance was attached thereto except as general confirmation of the balanced coordinates along Foothill Road. From this point, a bearing of S18°56'34" E coincides with an old fence line. The southeast corner of the Catalano property was not set since it falls on the vertical north wall of the irrigation canal.

General remarks:

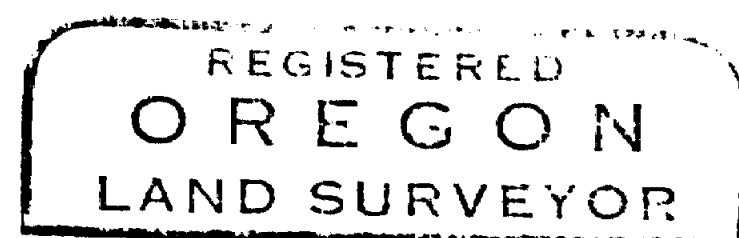
Witnesses to the discovery of original corner posts are:

Frank W. Catalano, Rte. 3, Box 115, Foothill Road, Medford
Larry Hammond, 425 Beatty Street, Medford
Carroll K. Conn, 2395 Springbrook Road, Medford

This survey was made over a protracted period of time ranging from early spring to late summer. Pipes were difficult to drive, a gad being necessary and a number of pipes had to be "sprung" on line. It later

was observed that some pipe wobble over a period of time was as much as 0.10 feet. Some pipes were also set in soft ooze with consequent difficulty in holding true position.

August 24, 1962



Charles H. Hurst

