

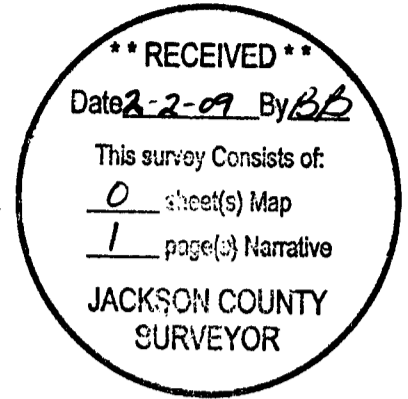
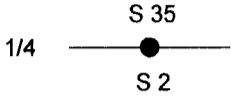
OREGON CORNER RESTORATION FORM

20305

Section 2 Township 34 Range 4 W  
County Jackson Date 1/22/09

Corner Designation \_\_\_\_\_

- \_\_\_\_\_ Condition Report Only
- \_\_\_\_\_ Not Found
- \_\_\_\_\_ Renewed
- \_\_\_\_\_ Unrecorded
- X \_\_\_\_\_ Surveyed In
- \_\_\_\_\_ Referenced Out



Previous Renewals/Surveys, etc. \_\_\_\_\_

1952 GLO Record Survey

Monument(s) & Accessories Found: (Condition and Source)

26" Douglas Fir Bears N50°W 124.5 Ft. (Record N52°W 125.0 ft.) healed face and tag

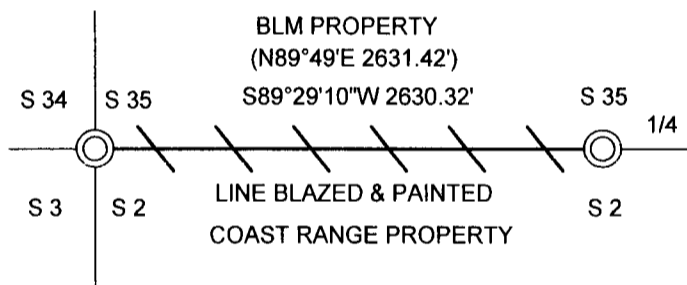
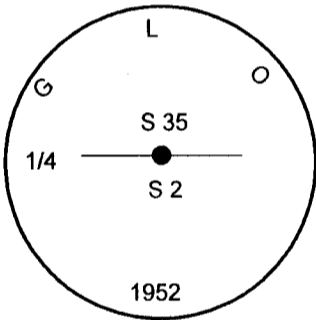
28" Douglas Fir Bears S63 1/4°E 39.1 Ft. (Record S65 1/2°E 43.8 Ft.) healed face and tag

30" Madrone Bears S3 1/2°W 14.5 Ft. (Record S2°E 13.2 Ft.) no face tag

12" Cedar at S74°W 10.56 Ft. is down and did not measure to

Monument Detail

Sketch



Monument Set (Procedures and Description)

New Accessories

Location & Comments

Surveyor's Seal

Corner falls at head of steep rocky draw. The corner has been badly bent by rolling rocks in creek. Property lines established by random survey traverse to GPS control near corner monuments.

Basis Of Bearing GPS  
 Firm/Agency Lone Rock Timber Co.  
 Address P. O. Box 1127  
Roseburg, Ore. 97470  
 Party Chief Gary Angiolet  
 Notes Gary Angiolet  
 Witness Ignacio Roman

