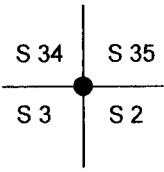


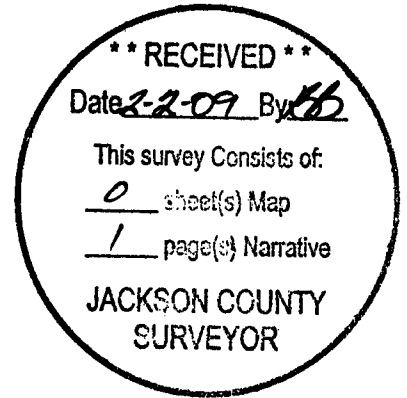
OREGON CORNER RESTORATION FORM

Section 2 Township 34 Range 4 W  
County Jackson Date 1/22/09

Corner Designation \_\_\_\_\_



- \_\_\_\_\_ Condition Report Only
- \_\_\_\_\_ Not Found
- \_\_\_\_\_ Renewed
- \_\_\_\_\_ Unrecorded
- X \_\_\_\_\_ Surveyed In
- \_\_\_\_\_ Referenced Out



Previous Renewals/Surveys, etc. \_\_\_\_\_

1952 GLO Record Survey

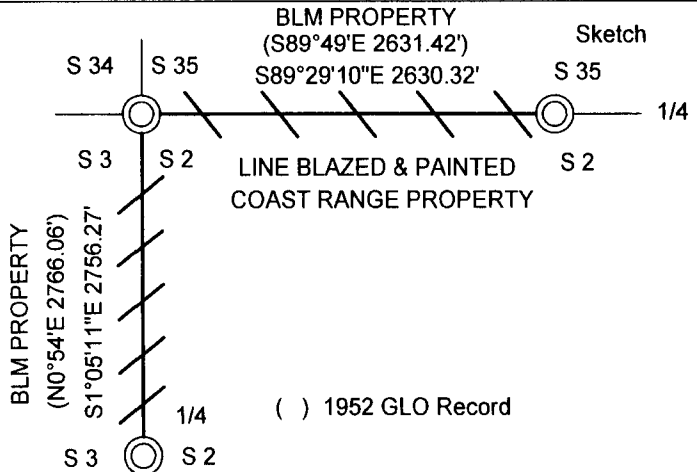
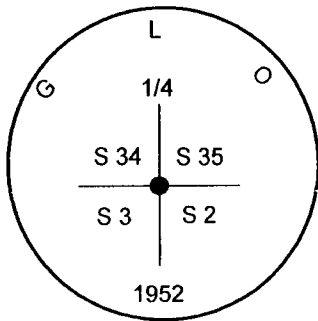
Monument(s) & Accessories Found: (Condition and Source)

23" Douglas Fir Bears N67 3/4°W 94.4 Ft. (Record N67 3/4°W 94.38 ft.) healed face and tag

20" Douglas Fir Bears S85°E 122.9 Ft. (Record S85°03'E 122.76 Ft.) healed face and tag

12" Madrone Bears N42 1/4°E 49.6 Ft. (Record N41 1/2°E 48.84 Ft.) healed face and tag

Monument Detail



Monument Set (Procedures and Description) \_\_\_\_\_

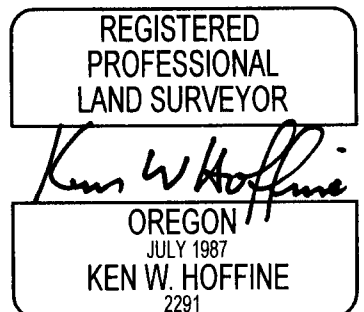
New Accessories \_\_\_\_\_

Location & Comments

Corner is 0.3 ft. above ground and approx. 40 ft. north and approx. 40 ft. west of dirt road. Property lines established by random survey traverse to GPS control near corner monuments.

Basis Of Bearing GPS  
 Firm/Agency Lone Rock Timber Co.  
 Address P. O. Box 1127  
Roseburg, Ore. 97470  
 Party Chief Gary Angiolet  
 Notes Gary Angiolet  
 Witness Ignacio Roman

Surveyor's Seal



EXPIRES 6-30-09

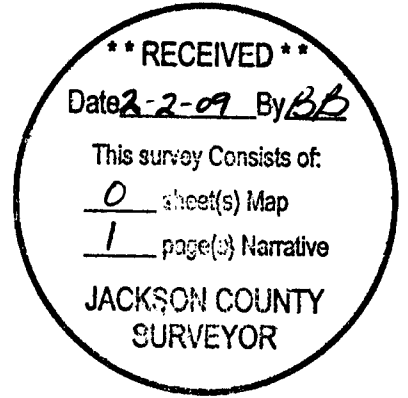
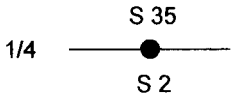
OREGON CORNER RESTORATION FORM

20305

Section 2 Township 34 Range 4 W  
County Jackson Date 1/22/09

Corner Designation \_\_\_\_\_

- \_\_\_\_\_ Condition Report Only
- \_\_\_\_\_ Not Found
- \_\_\_\_\_ Renewed
- \_\_\_\_\_ Unrecorded
- X \_\_\_\_\_ Surveyed In
- \_\_\_\_\_ Referenced Out

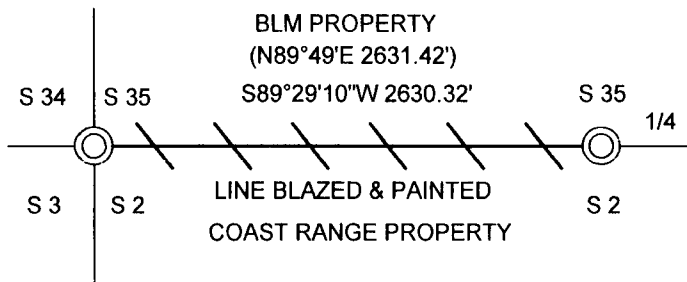
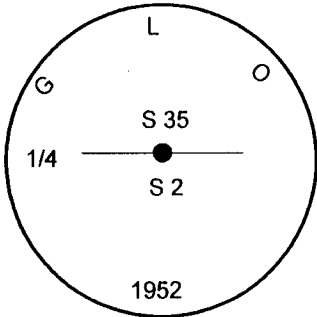


Previous Renewals/Surveys, etc. 1952 GLO Record Survey

- Monument(s) & Accessories Found: (Condition and Source)
- 26" Douglas Fir Bears N50°W 124.5 Ft. (Record N52°W 125.0 ft.) healed face and tag
  - 28" Douglas Fir Bears S63 1/4°E 39.1 Ft. (Record S65 1/2°E 43.8 Ft.) healed face and tag
  - 30" Madrone Bears S3 1/2°W 14.5 Ft. (Record S2°E 13.2 Ft.) no face tag
  - 12" Cedar at S74°W 10.56 Ft. is down and did not measure to

Monument Detail

Sketch



( ) 1952 GLO Record

Monument Set (Procedures and Description)

New Accessories

Location & Comments

Surveyor's Seal

Corner falls at head of steep rocky draw. The corner has been badly bent by rolling rocks in creek.

Property lines established by random survey traverse to GPS control near corner monuments.

Basis Of Bearing GPS

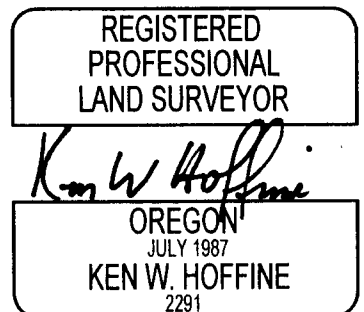
Firm/Agency Lone Rock Timber Co.

Address P. O. Box 1127  
Roseburg, Ore. 97470

Party Chief Gary Angiolet

Notes Gary Angiolet

Witness Ignacio Roman



EXPIRES 6-30-09