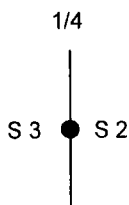


20303

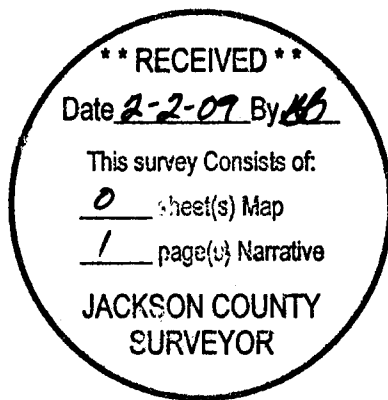
OREGON CORNER RESTORATION FORM

Section 2 Township 34 Range 4 W  
County Jackson Date 1/22/09

Corner Designation \_\_\_\_\_



- \_\_\_\_\_ Condition Report Only
- \_\_\_\_\_ Not Found
- \_\_\_\_\_ Renewed
- \_\_\_\_\_ X \_\_\_\_\_ Unrecorded
- \_\_\_\_\_ Surveyed In
- \_\_\_\_\_ Referenced Out



Previous Renewals/Surveys, etc.

1952 GLO Survey

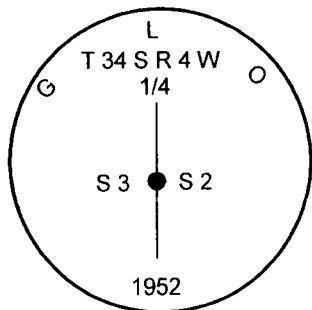
Monument(s) & Accessories Found: (Condition and Source)

23" Cedar Bears S30°E 19.14 Ft. as per record healed face and tag

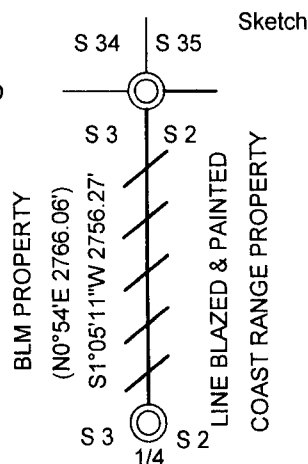
20" Douglas Fir Bears S24 1/4°E 59.4 Ft. as per record healed face and tag

12" Madrone Bears N52°W 22.44 Ft. tree dead and down

Monument Detail



( ) Record 1952 GLO



Monument Set (Procedures and Description)

New Accessories

Location & Comments

Corner is under root wad from a down Douglas Fir. Corner was buried we dug it out and found it in good condition. Property lines established by random survey traverse to GPS control near corner monuments.

Compass Bearing 18 1/2°  
 Firm/Agency Lone Rock Timber Co.  
 Address P. O. Box 1127  
Roseburg, Ore. 97470  
 Party Chief Gary Angiolet  
 Notes Gary Angiolet  
 Witness Ignacio Roman

Surveyor's Seal



EXPIRES 6-30-09