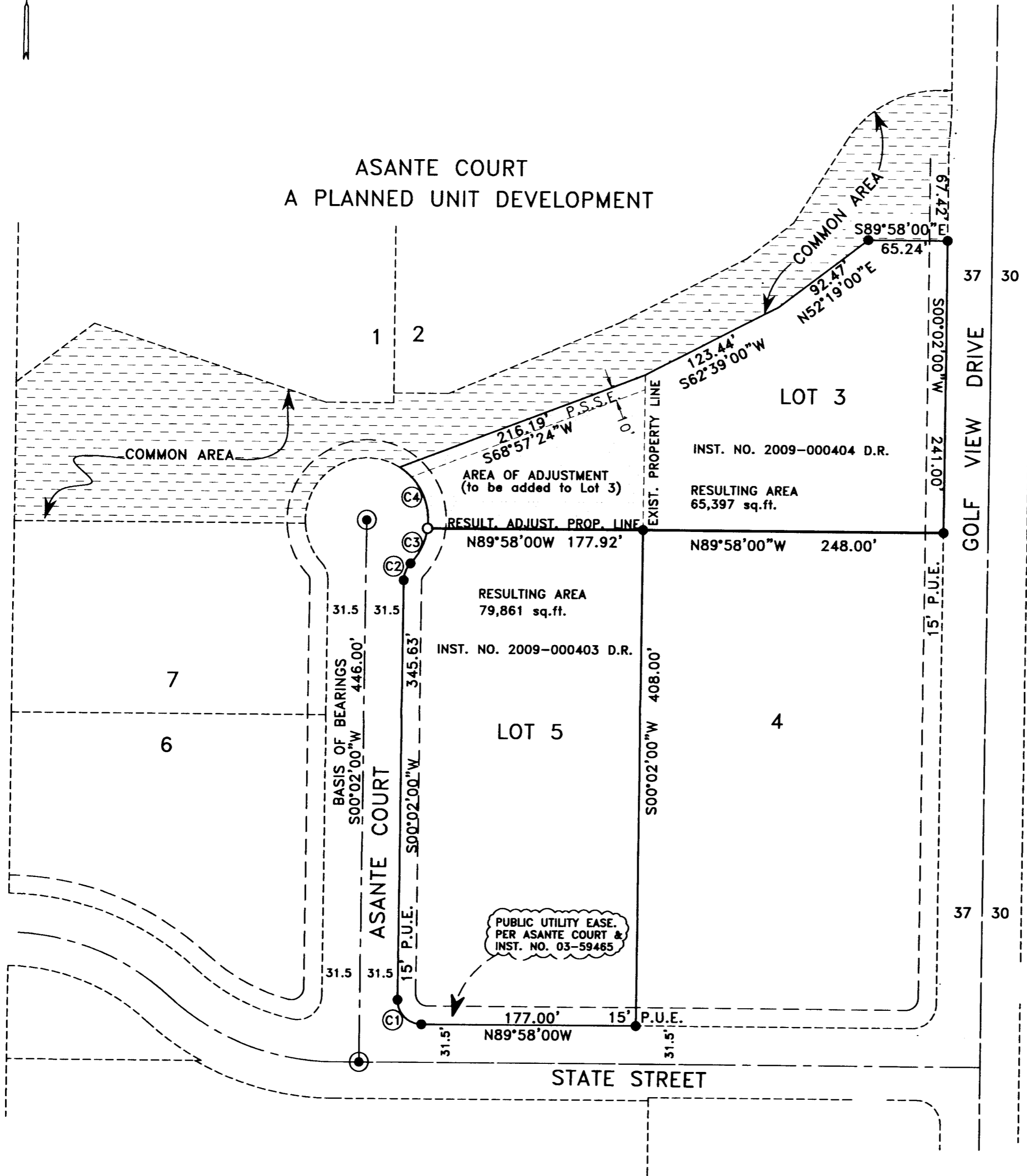


# MAP OF SURVEY PROPERTY LINE ADJUSTMENT

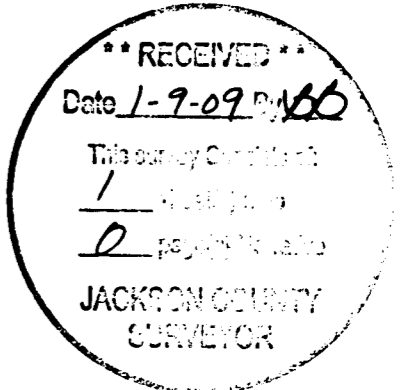
LOCATED IN:  
LOTS 3 AND 5 OF ASANTE COURT, a planned unit development,  
IN THE N.E. 1/4 SEC. 33, T. 37 S., R. 1 W., W.M.,  
IN THE CITY OF MEDFORD, JACKSON COUNTY, OR.



**SURVEY NARRATIVE TO COMPLY WITH PARAGRAPH 209.250  
OREGON REVISED STATUTES**

PURPOSE: TO SURVEY AND MONUMENT A PROPERTY LINE ADJUSTMENT AS APPROVED BY THE CITY OF MEDFORD PLANNING DEPARTMENT

PROCEDURE: THE PROPERTIES SUBJECT TO THE PROPERTY LINE ADJUSTMENT ARE LOTS 3 AND 5 OF ASANTE COURT, A PLANNED UNIT DEVELOPMENT. UTILIZING A TRIMBLE S6 ROBOTIC INSTRUMENT, MONUMENTS FROM ASANTE COURT WERE TIED AND VERIFIED FOR CORRECT LOCATION. THE LOCATION OF THE NEW ADJUSTED PROPERTY LINE WAS COMPUTED ACCORDING TO CLIENTS DIRECTION AND MONUMENTS WERE SET AS SHOWN. BASIS OF CONTROL FOR THIS SURVEY WAS THE MONUMENTED CENTERLINE OF ASANTE COURT.



CURVE TABLE					
CURVE	DELTA	RADIUS	LENGTH	CHORD	BEARING
C1	90°00'00"	20.00	31.42	28.28	N44°58'00"W
C2	43°30'07"	20.00	15.19	14.82	N21°47'03"E
C3	36°10'46"	51.00	32.20	31.67	N25°26'44"E
C4	65°39'28"	51.00	58.44	55.30	N25°28'24"W

**REGISTERED PROFESSIONAL LAND SURVEYOR**  
*Darrell L. Huck*  
OREGON  
FEBRUARY 4, 1988  
DARRELL L. HUCK  
2023  
Expires 6/30/2009  
(08153-mos-11a.DWG)

HOFFBUHR & ASSOCIATES, INC.  
880 GOLF VIEW DRIVE, SUITE 201  
MEDFORD, OREGON 97504  
(541)779-4641  
BY: DARRELL L. HUCK  
SCALE: 1 inch = 80'  
BASIS OF BEARING:

PLS No. 2023  
January 6, 2009  
ASANTE COURT

- = Set 5/8"x24" iron reinforcing pin with plastic cap stamped "D. Huck LS 2023".
- = Found 5/8" iron pin per Asante Court
- ⊙ = Found 5/8" iron pin with Alum. cap per Asante Court

- P.S.S.E. = Private Sanitary Sewer Easement
- PUE = Easement for public utilities, storm drainage, irrigation, gas, water, electric, telephone, cable television and sanitary sewer, construction and maintenance
- D/R = Deed Records, Jackson County, Oregon