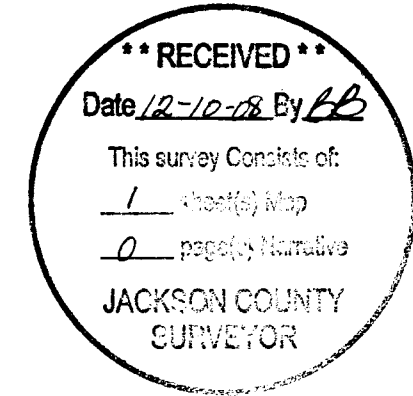


SURVEY FOR: COAST RANGE RESOURCES LLC & SILVER BUTTE TIMBER CO.

SOUTH 1/2 OF THE SE 1/4 OF SECTION 21 TOWNSHIP 33 SOUTH, RANGE 2 EAST. W. M. JACKSON COUNTY OREGON
 SURVEYED: BY LONE ROCK TIMBER MANAGEMENT CO.

P.O. BOX 1127 ROSEBURG, OREGON 97470 SURVEY: M33 - 2E - 21

DATE: NOVEMBER 2008



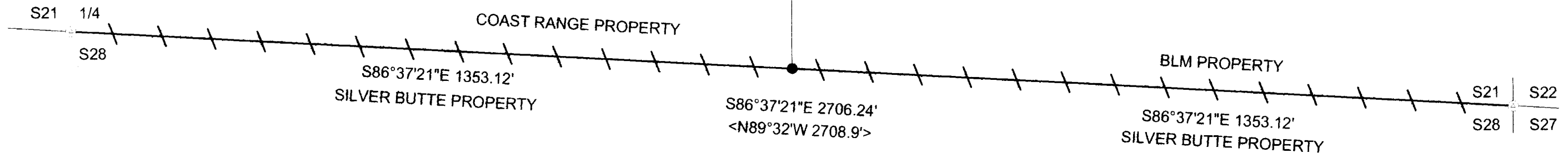
LEGEND:

- FOUND 1965 BLM BRASS CAP
- SET 5/8" X 40" IRON ROD WITH 2 1/2" ALUMINUM CAP MARKED LONE ROCK TIMBER E1/16 S21 S28 PLS2291 2008
- < > FROM OLD MEDCO INTERNAL SURVEY INFO
- LINES BLAZED AND PAINTED
- PROJECTED LINES

NARRATIVE:

THIS SURVEY WAS CONDUCTED TO ESTABLISH PROPERTY CORNER AND LINES FOR TIMBER CUTTING PURPOSES. WE INITIATED THIS SURVEY BY ESTABLISHING GPS CONTROL POINTS NEAR THE SOUTHEAST CORNER OF SECTION 21, THE SOUTH 1/4 OF SECTION 21, AND THE EAST 1/16 CORNER OF SECTIONS 21 AND 28. WE RAN A CONVENTIONAL RANDOM POINT-TO-POINT TRAVERSE ALONG THE PROPERTY LINE BETWEEN THE GPS CONTROL POINTS. WE FOUND AN UNRECORDED ALUMINUM CAP (RS 461) AT 1.51 FEET AWAY FROM THE BLM CAP SET FOR THE SOUTH 1/4 OF SECTION 21. WE ALSO FOUND AN UNRECORDED BENT ALUMINUM CAP (MEDCO 673) UNDER A 40" DOUGLAS FIR WINDFALL WHICH LIES 3.86 FEET FROM OUR COMPUTED AND SET POSITION FOR THE EAST 1/16 BETWEEN SECTIONS 21 AND 28. WE MARKED BY BLAZING AND PAINTING THE PROPERTY LINE BETWEEN LONE ROCK AND SILVER BUTTE AS SHOWN ON THE ATTACHED MAP BETWEEN THE SOUTH 1/4 AND EAST 1/16 OF SECTION 21. THIS SURVEY WAS DONE WITH TRIMBLE 4400 AND 4000 GPS EQUIPMENT AND A NIKON DTM 522 TOTAL STATION WITH GARY ANGIOLET AND IGNACIO ROMAN ASSISTING ME.

THE QUARTER CORNER BETWEEN SECTIONS 21 AND 28.
 FOUND 1965 BLM BRASS CAP AT GROUND LEVEL
 -- 1 1/2" ALUMINUM CAP BY RS 461 BEARS S32°E 1.51 FEET
 -- 30" FIR STUMP BEARS N20 1/4°E 25.7 FEET
 -- 9" NEW BT BEARS S35 1/4°W 13.3 FEET WE SCRIBE 1/4 S28 BT AND TAG
 CORNER LIES IN MOUND OF STONES APPROX. 40 FEET SOUTH OF OLD CAT ROAD



THE EAST 1/16 CORNER BETWEEN SECTIONS 21 AND 28.
 SET 5/8" IRON ROD WITH 2 1/2" ALUMINUM CAP MARKED LONE ROCK TIMBER E 1/16 S21 S22 2008 PLS2291
 -- 1 1/2" ALUMINUM CAP MARKED MEDCO 673 BEARS N16°21' 28"W 3.86 FEET BENT AND UNDER 40" DOWN DOUGLAS FIR
 -- SET 5/8" X 40" IRON ROD WITH YELLOW PLASTIC CAP MARKED LONE ROCK TIMBER PLS 2291 N86°37'12"W 10.0 FEET
 -- SET 5/8" X 40" IRON ROD WITH YELLOW PLASTIC CAP MARKED LONE ROCK TIMBER PLS 2291 S86°37'12"E 20.0 FEET WITH A 17" WHITE FIR BEARS N47°E 26.6 FEET WE SCRIBE BT AND TAG
 -- 15" WHITE FIR BEARS N37°W 36.1 FEET WE SCRIBE E1/16 S21 BT AND TAG
 CORNER LIES APPROX. 15 FEET NORTH OF SKID ROAD FOR 2008 LOGGING UNIT
 PUT METAL FENCE POST APPROX. 0.5 FEET WEST OF CORNER

THE SOUTHEAST CORNER FOR SECTION 21
 FOUND 1965 BLM BRASS CAP AT GROUND LEVEL
 -- 10" DOUGLAS FIR BEARS S44 1/2°E 31.4 FEET (RECORD S44°E 31.5 FEET) HEALED FACE AND TAG
 -- 14" WHITE FIR BEARS N3 1/4°E 4.8 FEET (RECORD N4°E 4.62 FEET) HEALED FACE AND TAG
 -- 19" WHITE FIR BEARS S89°W 14.8 FEET (RECORD S86°W 15.18 FEET) HEALED FACE AND TAG
 -- 19" WHITE FIR BEARS N73°W 21.5 FEET (RECORD N74°W 21.78 FEET) HEALED FACE AND TAG
 CORNER LIES AT NORTHEAST CORNER OF RECENT LOGGING UNIT.

REGISTERED PROFESSIONAL LAND SURVEYOR

 OREGON JULY 16, 1987
 KEN W. HOFFINE PLS 2291
 EXPIRES 6-30-09

