

# MAP OF STREET CENTERLINE MONUMENT REPLACEMENT

LOCATED IN THE SW 1/4 OF SECTION 2, SE 1/4 OF SECTION 3, NW 1/4 SECTION 10 AND THE NW 1/4 OF SECTION 11 TOWNSHIP 37 SOUTH, RANGE 2 WEST, WILLAMETTE MERIDIAN, CITY OF CENTRAL POINT, JACKSON COUNTY, OREGON  
MARCH 18, 2008

**NARRATIVE:** THIS MAP IS INTENDED TO CREATE AN OFFICIAL RECORD OF STREET CENTERLINE MONUMENT REPLACEMENTS IN THE CITY OF CENTRAL POINT. NO SURVEY MEASUREMENTS WERE MADE BETWEEN FOUND MONUMENTS. THIS MAP REFLECTS A DESCRIPTION OF THE ORIGINAL MONUMENT, THE GENERAL LOCATION OF SAID MONUMENT AND THE NATURE OF THE REPLACEMENT MONUMENT.

UNLESS NOTED OTHERWISE, ALL FOUND MONUMENTS WERE REPLACED BY A STANDARD CITY OF CENTRAL POINT MONUMENT CASE, WITH A 2" PIPE AND 2 1/2" BRASS CAP CONSTRUCTED INSIDE. BRASS CAPS WERE STAMPED WITH THE SURVEYOR'S LICENCE NO. (2271) AND A DRILL HOLE MADE AT THE CENTERLINE POSITION AS REFERENCED FROM THE ORIGINAL MONUMENT.

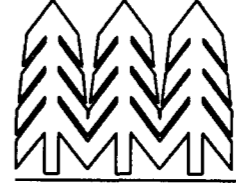
### SURVEY FOR:

PUBLIC WORKS DEPARTMENT  
CITY OF CENTRAL POINT  
140 SOUTH 3 RD STREET  
CENTRAL POINT, OREGON 97502



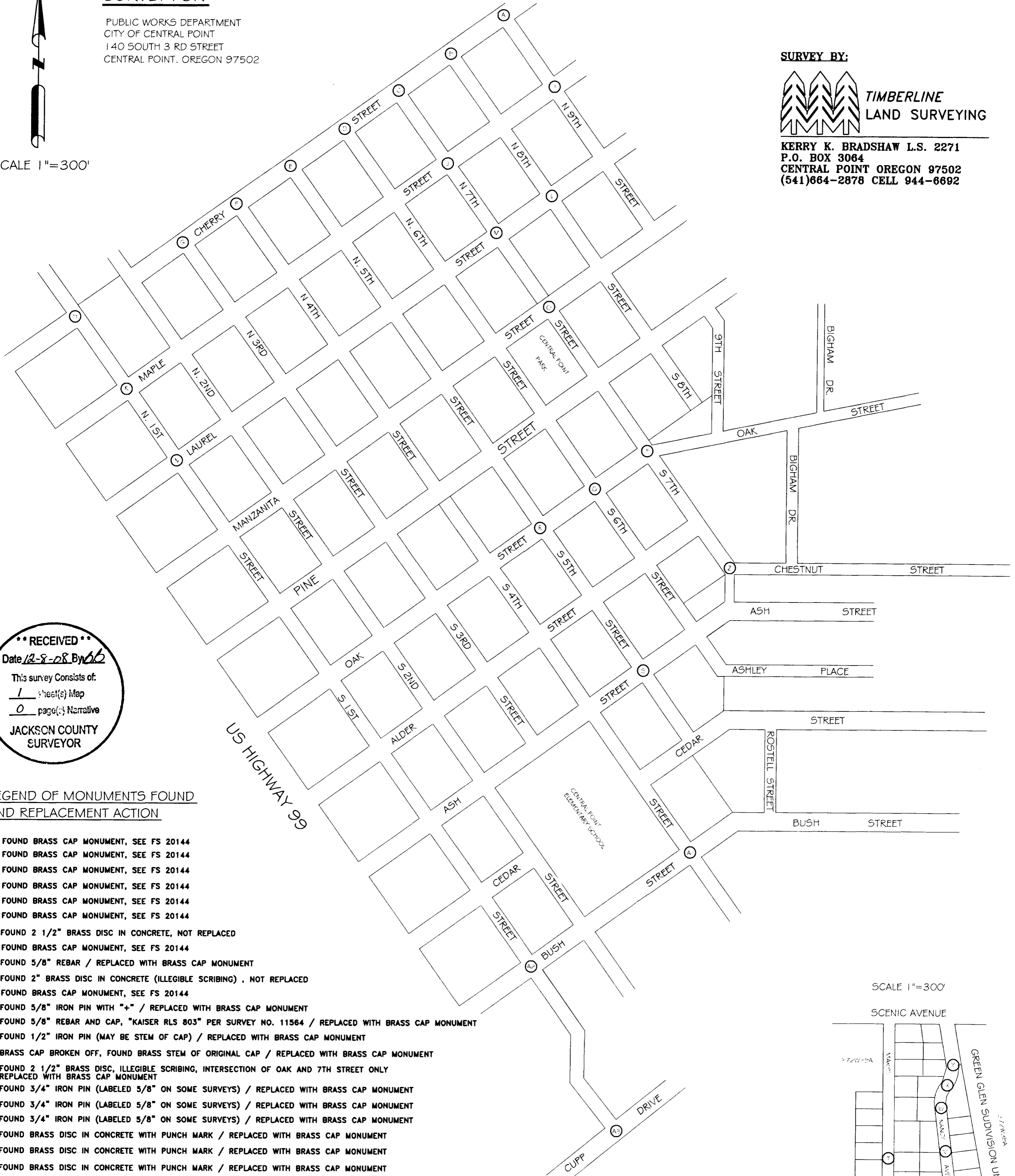
SCALE 1"=300'

### SURVEY BY:



**TIMBERLINE  
LAND SURVEYING**

**KERRY K. BRADSHAW L.S. 2271  
P.O. BOX 3064  
CENTRAL POINT OREGON 97502  
(541)664-2878 CELL 944-6692**

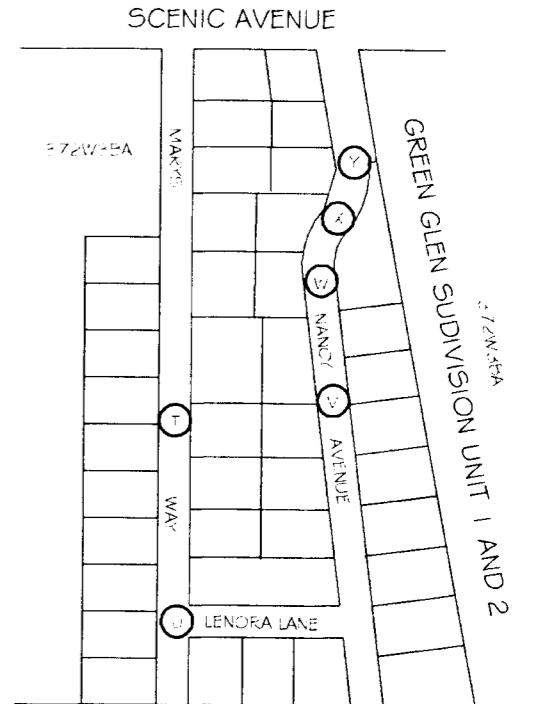


**\*\* RECEIVED \*\***  
Date 12-8-08 By MB  
This survey consists of:  
1 sheet(s) Map  
0 page(s) Narrative  
**JACKSON COUNTY  
SURVEYOR**

### LEGEND OF MONUMENTS FOUND AND REPLACEMENT ACTION

- (A) FOUND BRASS CAP MONUMENT, SEE FS 20144
- (B) FOUND BRASS CAP MONUMENT, SEE FS 20144
- (C) FOUND BRASS CAP MONUMENT, SEE FS 20144
- (D) FOUND BRASS CAP MONUMENT, SEE FS 20144
- (E) FOUND BRASS CAP MONUMENT, SEE FS 20144
- (F) FOUND BRASS CAP MONUMENT, SEE FS 20144
- (G) FOUND BRASS CAP MONUMENT, SEE FS 20144
- (H) FOUND 2 1/2" BRASS DISC IN CONCRETE, NOT REPLACED
- (I) FOUND BRASS CAP MONUMENT, SEE FS 20144
- (J) FOUND 5/8" REBAR / REPLACED WITH BRASS CAP MONUMENT
- (K) FOUND 2" BRASS DISC IN CONCRETE (ILLEGIBLE SCRIBING) , NOT REPLACED
- (L) FOUND BRASS CAP MONUMENT, SEE FS 20144
- (M) FOUND 5/8" IRON PIN WITH "+" / REPLACED WITH BRASS CAP MONUMENT
- (N) FOUND 5/8" REBAR AND CAP, "KAISER RLS 803" PER SURVEY NO. 11564 / REPLACED WITH BRASS CAP MONUMENT
- (O) FOUND 1/2" IRON PIN (MAY BE STEM OF CAP) / REPLACED WITH BRASS CAP MONUMENT
- (P) BRASS CAP BROKEN OFF, FOUND BRASS STEM OF ORIGINAL CAP / REPLACED WITH BRASS CAP MONUMENT
- (Q) FOUND 2 1/2" BRASS DISC, ILLEGIBLE SCRIBING, INTERSECTION OF OAK AND 7TH STREET ONLY REPLACED WITH BRASS CAP MONUMENT
- (R) FOUND 3/4" IRON PIN (LABELED 5/8" ON SOME SURVEYS) / REPLACED WITH BRASS CAP MONUMENT
- (S) FOUND 3/4" IRON PIN (LABELED 5/8" ON SOME SURVEYS) / REPLACED WITH BRASS CAP MONUMENT
- (T) FOUND 3/4" IRON PIN (LABELED 5/8" ON SOME SURVEYS) / REPLACED WITH BRASS CAP MONUMENT
- (U) FOUND BRASS DISC IN CONCRETE WITH PUNCH MARK / REPLACED WITH BRASS CAP MONUMENT
- (V) FOUND BRASS DISC IN CONCRETE WITH PUNCH MARK / REPLACED WITH BRASS CAP MONUMENT
- (W) FOUND BRASS DISC IN CONCRETE WITH PUNCH MARK / REPLACED WITH BRASS CAP MONUMENT
- (X) FOUND BRASS DISC IN CONCRETE WITH PUNCH MARK / REPLACED WITH BRASS CAP MONUMENT
- (Y) FOUND BRASS DISC IN CONCRETE WITH PUNCH MARK / REPLACED WITH BRASS CAP MONUMENT
- (Z) FOUND 2 1/2" BRASS DISC, ILLEGIBLE SCRIBING, REPLACED WITH BRASS CAP MONUMENT
- (AA) FOUND 1" IRON PIN, REPLACED WITH BRASS CAP MONUMENT
- (AB) FOUND 2 1/2" BRASS DISC RLS 803, REPLACED WITH BRASS CAP MONUMENT
- (AC) FOUND 2 1/2" BRASS DISC RLS 803, REPLACED WITH BRASS CAP MONUMENT

SCALE 1"=300'



**REGISTERED  
PROFESSIONAL  
LAND SURVEYOR**  
*Kerry K. Bradshaw*  
OREGON  
JULY 16, 1987  
**KERRY K. BRADSHAW  
2271**

EXP. 12-31-09