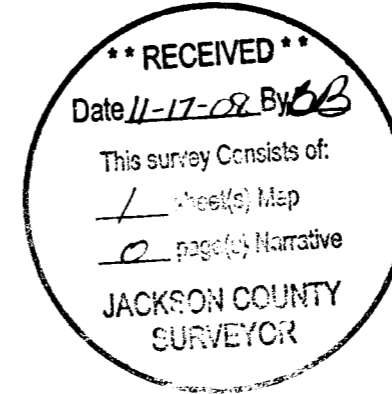


MAP OF SURVEY

LOCATED IN
SECTION 30,
TOWNSHIP 40 SOUTH, RANGE 3 EAST,
WILLAMETTE MERIDIAN
JACKSON COUNTY, OREGON

SURVEY FOR:
MERIWETHER
SOUTHERN OREGON
LAND & TIMBER

SURVEY BY:
SMITH SURVEYING
LLOYD "BUTCH" SMITH
7050 HIGHWAY 140
EAGLE POINT, OREGON 97524
(541) 826-2509



LEGEND

- ▲ FOUND MONUMENTS AS NOTED.
- SET MONUMENTS.
- LINE MARKED THIS SURVEY.
- [...] G.L.O. RECORD.
- {...} 1968 B.L.M. DEPENDENT RESURVEY.
- (...) 1983 B.L.M. DEPENDENT RESURVEY.

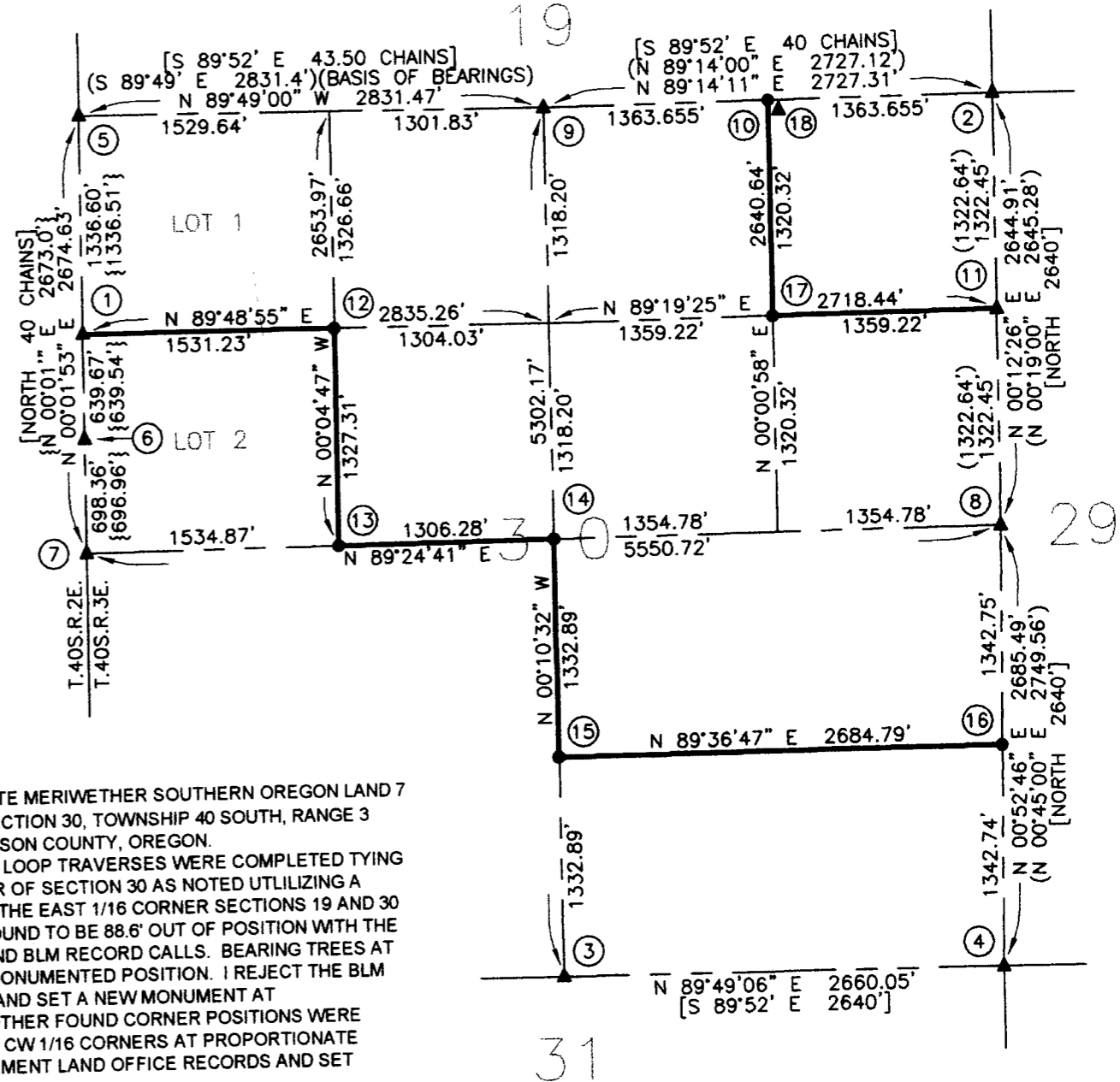
FOUND CORNER INFORMATION

- ① N 1/16 CORNER - SECTION 30 ONLY, BLM BRASS CAP, 1968.
- ② SECTION CORNER - SECTIONS 19, 20, 29 & 30, BLM BRASS CAP 1966.
- ③ 1/4 CORNER - SECTIONS 30 & 31, BLM BRASS CAP 1966.
- ④ SECTION CORNER - SECTIONS 29, 30, 31 & 32, BLM BRASS CAP 1966.
- ⑤ CLOSING CORNER - SECTIONS 19 & 30, BLM BRASS CAP 1983.
- ⑥ 1/4 CORNER - SECTION 25 ONLY, BLM BRASS CAP 1968.
- ⑦ W 1/4 CORNER - SECTION 30 ONLY, BLM BRASS CAP 1968.
- ⑧ 1/4 CORNER - SECTIONS 29 & 30, BLM BRASS CAP & IRON PIPE LAYING ON GROUND, HAVING BEEN DISTURBED FROM ORIGINAL DF BEARING TREE BLOWN DOWN. CALCULATED TRUE CORNER POSITION FROM REMAINING THREE BEARING TREES:
DF 26" DBH BEARS N71°25'W, 28.3 FEET (RECORD N67°30'W, 28.4 FEET).
IC 22" DBH BEARS N51°14'E, 12.9 FEET (RECORD N55°E, 13.2 FEET).
WHITE FIR 17" DBH BEARS N52°01'W, 62.8 FEET (RECORD N50°W, 62.7 FEET).
- ⑨ N 1/4 CORNER - SECTIONS 19 & 30, BLM BRASS CAP 1983.
- ⑩ E 1/16 CORNER - SECTIONS 19 & 30, BLM BRASS CAP 1983, ACTUAL LOCATION DOES NOT MATCH RECORD CALLS. SET NEW MONUMENT SEE CORNER REFERENCE 18.
- ⑪ N 1/16 CORNER - SECTIONS 29 & 30, COMPUTED, BLM BRASS CAP 1983 BEARS S61°21'26"W, 2.7 FEET.

SET CORNER INFORMATION

- ⑫ NW 1/16 CORNER - SET 5/8" x 24" IRON REBAR WITH YELLOW PLASTIC CAP MARKED "LS 2011".
WHITE FIR 15.6" DBH BEARS N78°40'E, 13.5 FEET, SCRIBED "NW1/16 S30 BT".
WHITE FIR 26.1" DBH BEARS S73°39'W, 55.5 FEET, SCRIBED "NW1/16 S30 BT".
- ⑬ CW 1/16 CORNER - SET 5/8" x 24" IRON REBAR WITH YELLOW PLASTIC CAP MARKED "LS 2011".
DF 11" DBH BEARS S12°41'E, 42.5 FEET, SCRIBED "CW1/16 S30 BT".
DF 15.6" DBH BEARS N40°50'W, 18.4 FEET, SCRIBED "CW1/16 S30 BT".
- ⑭ C 1/4 CORNER - SET 5/8" x 24" IRON REBAR WITH YELLOW PLASTIC CAP MARKED "LS 2011".
DF 9.2" DBH BEARS S31°51'W, 20.2 FEET, SCRIBED "C1/4 S30 BT".
DF 15.6" DBH BEARS N76°37'W, 30.3 FEET, SCRIBED "C1/4 S30 BT".
- ⑮ CS 1/16 CORNER - SET 5/8" x 24" IRON REBAR WITH YELLOW PLASTIC CAP MARKED "LS 2011".
WHITE FIR 19.7" DBH BEARS S42°58'W, 24.25 FEET, SCRIBED "CS1/16 S30 BT".
WHITE FIR 13.8" DBH BEARS N52°25'W, 31.3 FEET, SCRIBED "CS1/16 S30 BT".
- ⑯ S 1/16 CORNER SECTIONS 29 & 30 - SET 5/8" x 24" IRON REBAR WITH YELLOW PLASTIC CAP MARKED "LS 2011".
WHITE FIR 9" DBH BEARS S46°21'W, 24.3 FEET, SCRIBED "S1/16 S30 BT".
WHITE FIR 15.5" DBH BEARS S33°46'E, 20.6 FEET, SCRIBED "S1/16 S29 BT".
- ⑰ NE 1/16 CORNER - SET 5/8" x 24" IRON REBAR WITH YELLOW PLASTIC CAP MARKED "LS 2011".
CEDAR 6.5" DBH BEARS N46°26'W, 5.5 FEET, SCRIBED "NE1/16 S30 BT".
CEDAR 7" DBH BEARS N45°57'E, 25.1 FEET, SCRIBED "NE1/16 S30 BT".
- ⑱ EAST 1/16 CORNER SECTIONS 19 & 30 - SET 5/8" IRON REBAR WITH YELLOW PLASTIC CAP MARKED "LS 2011".
BLM BRASS CAP BEARS S85°03'36"E, 88.61 FEET.
DF 37" DBH BEARS S39°21'E, 34.9 FEET, SCRIBED "E1/16 S30 BT".
WHITE OAK 9.5" DBH BEARS N27°09'W, 22.5 FEET, SCRIBED "E1/16 S19 BT".

NOVEMBER 7, 2008



NARRATIVE

PURPOSE OF SURVEY: TO DELINEATE MERIWETHER SOUTHERN OREGON LAND 7 TIMBER LANDS LOCATED WITHIN SECTION 30, TOWNSHIP 40 SOUTH, RANGE 3 EAST, WILLAMETTE MERIDIAN, JACKSON COUNTY, OREGON.

PROCEDURE: A SERIES OF CLOSED LOOP TRAVERSES WERE COMPLETED TYING TO CORNERS ALONG THE EXTERIOR OF SECTION 30 AS NOTED UTILIZING A TOTAL STATION. THE POSITION OF THE EAST 1/16 CORNER SECTIONS 19 AND 30 AS SET BY THE BLM IN 1983 WAS FOUND TO BE 88.6' OUT OF POSITION WITH THE TRUE POSITION OF THE CORNER AND BLM RECORD CALLS. BEARING TREES AT THE BLM MONUMENT MATCH THE MONUMENTED POSITION. I REJECT THE BLM POSITION AS BEING SET IN ERROR AND SET A NEW MONUMENT AT PROPORTIONATE DISTANCE. ALL OTHER FOUND CORNER POSITIONS WERE ACCEPTED. I SET THE NW 1/16 AND CW 1/16 CORNERS AT PROPORTIONATE DISTANCES TO ORIGINAL GOVERNEMENT LAND OFFICE RECORDS AND SET REMAINING CORNERS AS NOTED.

REGISTERED
PROFESSIONAL
LAND SURVEYOR

Lloyd R. Smith
OREGON
JULY 16, 1982
LLOYD R. SMITH
No. 2011

Exp 6/30/10