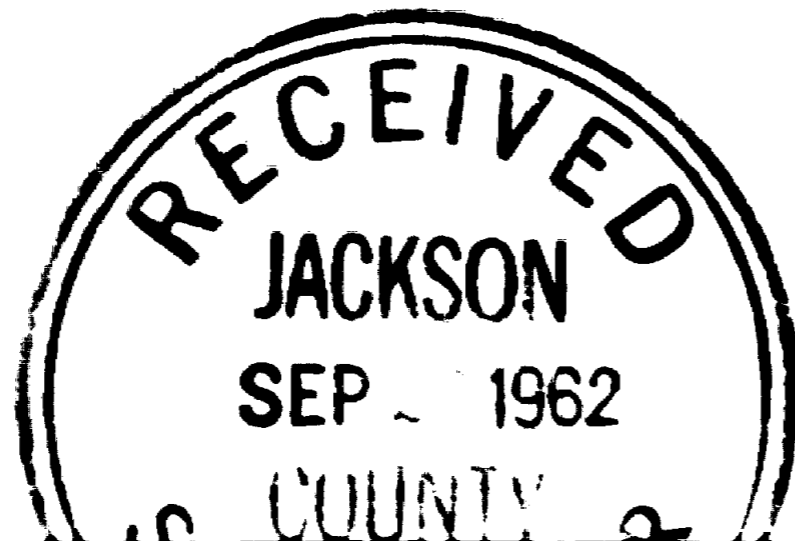


3

T. 35 S., R. 4 W.

Chains

I hereby certify that the bearings of all lines recorded in this survey were determined by solar observations and that the survey described in the foregoing field notes was executed in conformity with the laws of the State of Oregon.



Morris C. Ramsey

T. 35 S., R. 4 W.

Chains

A cedar 18 ins. in diam., bears S. 51° W., 55 lks.
dist., mkd. T35S R4W S7 RS404 BT.

A Douglas fir 8 ins. in diam., bears N. $55\frac{1}{2}^{\circ}$ W., 39 lks.
dist., mkd. T35S R4W S6 RS404 BT.

S. 89° 44' E., on the East and West center line from the
 $\frac{1}{4}$ sec. cor. of secs. 7 and 8.

40.99 To the center $\frac{1}{4}$ sec. cor. at the intersection of the
North and South center line.

Set an iron pipe 3 ft. long $1\frac{1}{2}$ ins. in diam., 28 ins.
in the ground, mkd. RS404, from which

A yellow pine 24 ins. in diam., bears N. 57° E., 27 lks.
dist., mkd. C $\frac{1}{4}$ S3 RS404 BT.

A cedar 8 ins. in diam., bears S. 55° E., 36 lks.
dist., mkd. C $\frac{1}{4}$ S8 RS404 BT.

A cedar 10 ins. in diam., bears S. 82° W., 50 lks.
dist., mkd. C $\frac{1}{4}$ S8 RS404 BT.

A yellow pine 10 ins. in diam., bears N. 76° W., 230 lks.
dist., mkd. C $\frac{1}{4}$ S8 RS404 BT.

81.06 To the $\frac{1}{4}$ sec. cor. of secs. 8 and 9 which is monumented
and witnessed as described by the County Record.

The $\frac{1}{4}$ sec. cor. of secs. 5 and 17 is monumented and
witnessed as described by the County Record.

Thence N. 0° 44' E., on the North and South center line
of section 8.

20.00 Point for the South center 1/16 section corner.

Set an iron pipe 3 ft. long 1 in. in diam., 28 ins. in
the ground, mkd. RS404, from which

A sugar pine 32 ins. in diam., bears N. 44° E., 83 lks.
dist., mkd. CS 1/16 S8 RS404 BT.

A black oak 18 ins. in diam., bears S. 6° E., 71 lks.
dist., mkd. CS 1/16 S8 RS404 BT.

40.00 To the center $\frac{1}{4}$ sec. cor. of sec. 8.

80.09 To the $\frac{1}{4}$ sec. cor. of secs. 5 and 8 determined from the
original bearing trees

A black oak 18 ins. in diam., bears N. 29° E., 73 lks.
dist., healed.

A white oak 16 ins. in diam., bears S. 32° E., 89 lks.
dist., chopped with scribe mks. exposed in the top blaze.

Set an iron pipe 3 ft. long $1\frac{1}{2}$ ins. in diam., 28 ins. in
the ground, mkd. RS404, from which a new bearing tree

A Douglas fir 12 ins. in diam., bears S. $3\frac{1}{2}^{\circ}$ E., 63 lks.
dist., mkd. $\frac{1}{4}$ S8 RS404 BT.

TOWNSHIP 35 SOUTH, RANGE 4 WEST, W. M., JACKSON COUNTY, OREGON

Dependent Resurvey and Subdivision of Section 8

Chains

The section corner of sections 7, 8, 17 and 18 is monumented and witnessed as described by the County Record.

The geographic position of this corner is latitude $42^{\circ} 32' 05''$ N., and longitude $123^{\circ} 12' 41''$ W. The observed magnetic declination is $19^{\circ} 30'$ E.

August 21, 1962: at this corner at 9 a.m., P.S.T., I set off $42^{\circ} 30'$ N. on the lat arc; $12^{\circ} 08'$ N., on the declination arc; of my Gurley solar transit and determine a meridian with the solar attachment.

Thence

N. $0^{\circ} 22'$ W., on true line bet. secs. 7 and 8.

19.9/5 Point for the South 1/16 sec. cor. at proportionate distance

Set an iron pipe 3 ft. long 1 in. in diam., 28 ins. in the ground, mkd. RS404, from which

A Douglas fir 8 ins. in diam., bears S. $54\frac{1}{2}^{\circ}$ E., 9 lks. dist., mkd. S 1/16 S8 RS404 BT.

A cedar 24 ins. in diam., bears S. 25° W., 42 lks. dist., mkd. S 1/16 S7 RS404 BT.

39.83 Point for the $\frac{1}{4}$ sec. cor. at proportionate distance. Fail to find any evidence of the original corner.

Set an iron pipe 3 ft. long $1\frac{1}{2}$ in. in diam., 28 ins. in the ground, mkd. RS404, from which

A Douglas fir 24 ins. in diam., bears N. 60° E., 32 lks. dist., mkd. $\frac{1}{4}$ S8 RS404 BT.

A maple 16 ins. in diam., bears S. 74° W., 53 lks. dist., mkd. $\frac{1}{4}$ S7 RS404 BT.

79.76 To the sec. cor. of secs. 5, 6, 7 and 8, determined from the original bearing trees

A madrona 18 ins. in diam., bears N. 50° E., 20 lks. dist., chopped with partial scribe marks.

The Southeast bearing tree is a madrona down and decayed with partial scribe mks. and has been disturbed, unable to find the point where it came from.

A madrona 12 ins. in diam., bears N. 49° W., 86 lks. dist., down with axe face, marks are obliterated from decay.

Set an iron pipe 3 ft. long 2 ins. in diam., 28 ins. in the ground, mkd. RS404, from which new bearing trees

A madrona 8 ins. in diam., bears N. 2° E., 21 lks. dist., mkd. T35S R4W S5 RS404 BT.

A Douglas fir 30 ins. in diam., bears S. 13° E., 14 lks. dist., mkd. T35S R4W S8 RS404 BT.

2022

TOWNSHIP 35 SOUTH, RANGE 4 WEST, W. M., JACKSON COUNTY, OREGON

DEPENDENT RESURVEY

AND SUBDIVISION OF

SECTION 8

EXECUTED AT THE REQUEST OF J. H. BAXTER & CO.

OF

GRANTS PASS, OREGON

BY

Marvin C. Ramsey, Registered Professional Land Surveyor

Assistants

Paul E. Jonas

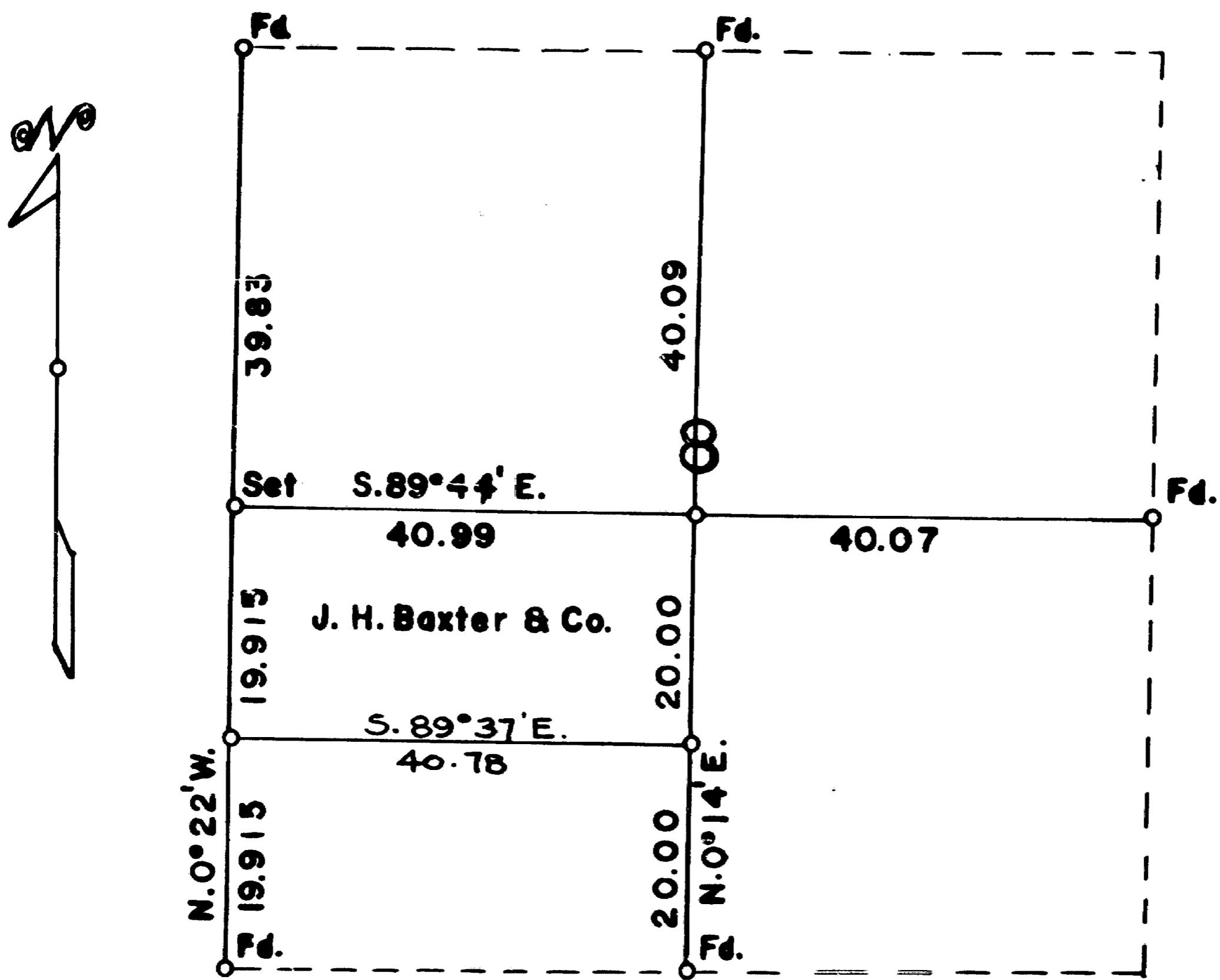
Floyd H. Brock

Survey commenced August 21, 1962

Survey completed September 6, 1962

T. 35S., R. 4W., W.M. JACKSON COUNTY OREGON

DEPENDENT RESURVEY AND SUBDIVISION OF SECTION 8



Scale: 1 inch = 20 chains = 1320 feet

Mean Magnetic Declination 19° 30' E.

The bearings of all lines are referred to the true meridian determined by solar observations

o = Corner Occupied and Monumented

— Lines Surveyed - - - - Lines Not Retraced

Survey executed August 21 - September 6, 1962

I hereby certify that the survey represented by this plat is executed in conformity with the Laws of the State of Oregon



Martin C. Ramsey