

CONTROL SURVEY

SURVEY NARRATIVE TO COMPLY WITH O.R.S. 209.250

LOCATED IN
 THE SOUTH HALF OF SECTION 20
 AND THE NORTH HALF OF SECTION 29
 TOWNSHIP 37 SOUTH, RANGE 1 WEST,
 WILLAMETTE MERIDIAN,
 IN THE CITY OF MEDFORD, JACKSON COUNTY
 OREGON

SURVEY BY
 THE CITY OF MEDFORD
 411 WEST 8TH STREET
 AUGUST 26, 2008

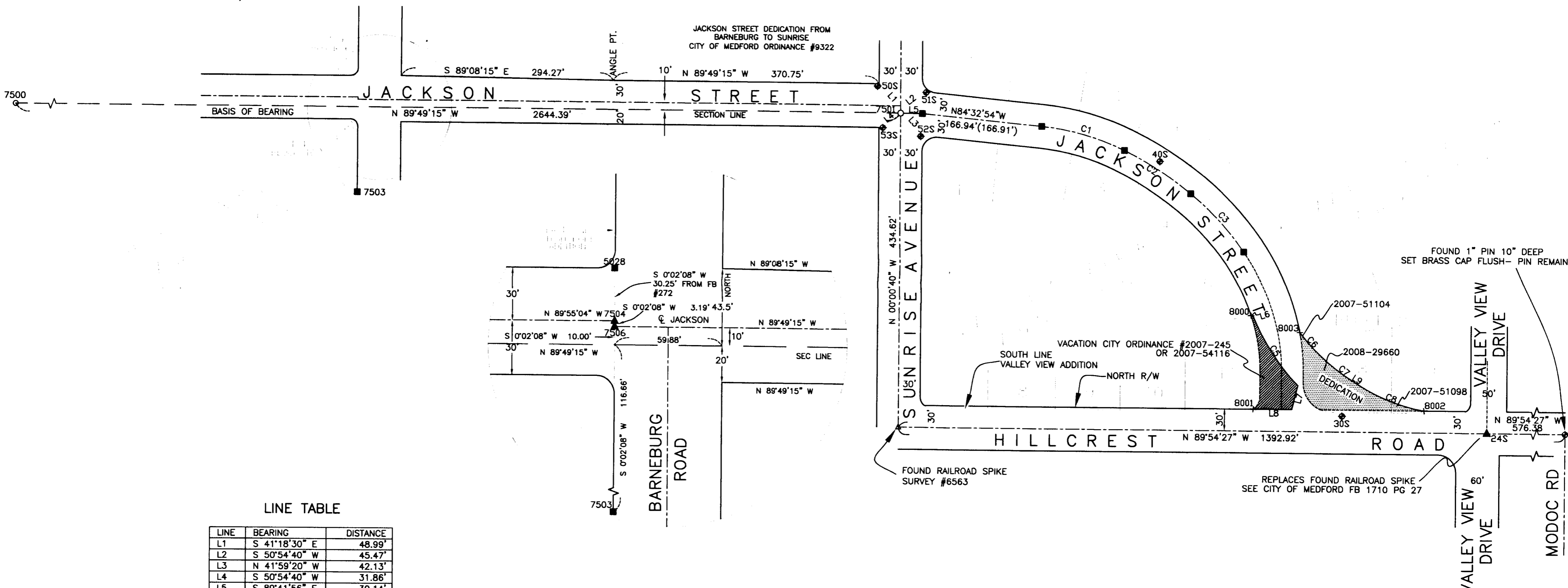
SCALE: 1"=100'

PURPOSE:
 TO ESTABLISH CONTROL FOR JACKSON STREET FROM BARNEBURG TO VALLEY VIEW

PROCEDURE:
 UTILIZING THE CONTROL ESTABLISHED ON SURVEY NUMBER 19649, SET CONTROL MONUMENTS AND CENTERLINE MONUMENTS AS SHOWN

COORDINATE TABLE

PT #	NORTHING	EASTING	DESCRIPTION
24S	371173.094	4279084.979	5/8"x24" IRON PIN & C.O.M. METAL CAP
30S	371195.044	4278884.0445	C.O.M. 2-1/2" BRASS CAP IN SIDEWALK
40S	371546.153	4278628.973	C.O.M. 2-1/2" BRASS CAP IN SIDEWALK
50S	371645.831	4278235.971	C.O.M. 2-1/2" BRASS CAP IN SIDEWALK
51S	371637.710	4278303.603	C.O.M. 2-1/2" BRASS CAP IN SIDEWALK
52S	371577.724	4278296.496	C.O.M. 2-1/2" BRASS CAP IN SIDEWALK
53S	371588.952	4278243.582	C.O.M. 2-1/2" BRASS CAP IN SIDEWALK
502B	371654.855	4277513.465	1 1/4" PIPE COM FIELD BOOK #272 PAGE 16
7500	371617.320	4275623.930	SEC COR BRASS CAP IN MONUMENT CASE
7501	371609.040	4278268.310	1/4 COR BRASS CAP IN MONUMENT CASE
7503	371494.758	4277513.366	5/8" PIN SURVEY #5897
7504	371624.605	4277513.446	5/8"x24" IRON PIN & C.O.M. METAL CAP
7506	371621.407	4277513.445	5/8"x24" IRON PIN & C.O.M. METAL CAP
8000	371332.307	4278757.024	CALCULATED POSITION
8001	371203.610	4278760.889	CALCULATED POSITION
8002	371203.227	4278997.630	CALCULATED POSITION
8003	371309.373	4278824.850	CALCULATED POSITION



LINE TABLE

LINE	BEARING	DISTANCE
L1	S 41°18'30" E	48.99'
L2	S 50°54'40" W	45.47'
L3	N 41°59'20" W	42.13'
L4	S 50°54'40" W	31.86'
L5	S 89°41'56" E	30.14'
L6	N 71°52'22" E	2.40'
L7	N 13°55'33" E	34.15'
L8	S 89°54'27" E	53.40'
L9	S 57°40'05" E	10.82'

CURVE TABLE

CURVE	RADIUS	ARC LENGTH	CHORD LENGTH	CHORD BEARING	DELTA ANGLE
C1	338.64'	120.02'	119.39'(119.4')	N 74°23'41" W	20°18'26"
C2	474.93'	109.62'	109.38'(109.3')	N 57°37'40" W	13°13'30"
C3	375.14'	109.52'	109.13'(109.1')	N 42°39'03" W	16°43'38"
C5	303.00'	116.03'	115.32'	N 33°17'50" W	21°56'25"
C6	245.96'	42.08'	42.02'	N 42°11'26" W	09°48'06"
C7	304.50'	56.21'	56.13'	N 52°22'47" W	10°34'37"
C8	248.50'	98.07'	97.44'	N 68°58'26" W	22°36'43"

() = RECORD PER VALLEY VIEW ADDITION

LEGEND

- Δ = MONUMENT FOUND AS NOTED
- = MONUMENT FOUND - SEE TABLE
- ◆ = SET CITY OF MEDFORD 2-1/2" BRASS CAP IN SIDEWALK
- = SET 5/8"x24" IRON PIN & CITY OF MEDFORD METAL CAP
- ▲ = MONUMENT FOUND ON SURVEY NUMBER 19649
- + = CALCULATED POSITION

BASIS OF BEARINGS = SURVEY #6563 (SECTION LINE)

REGISTERED PROFESSIONAL LAND SURVEYOR

 OREGON
 JULY 14, 1978
 PAUL D. LEWIS
 1644
 EXPIRES DECEMBER 31, 2008

** RECEIVED **
 DATE 11-6-08 BY BB
 This survey consists of:
 1 sheet(s) Map
 0 page(s) Narrative
 JACKSON COUNTY SURVEYOR