

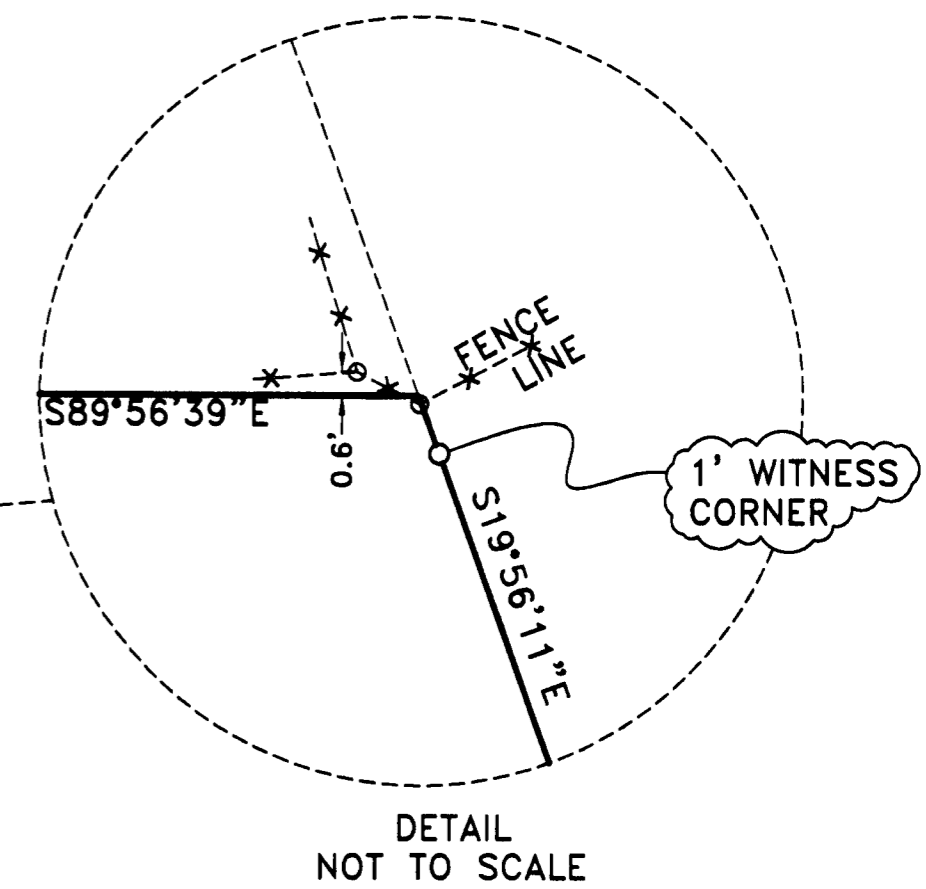
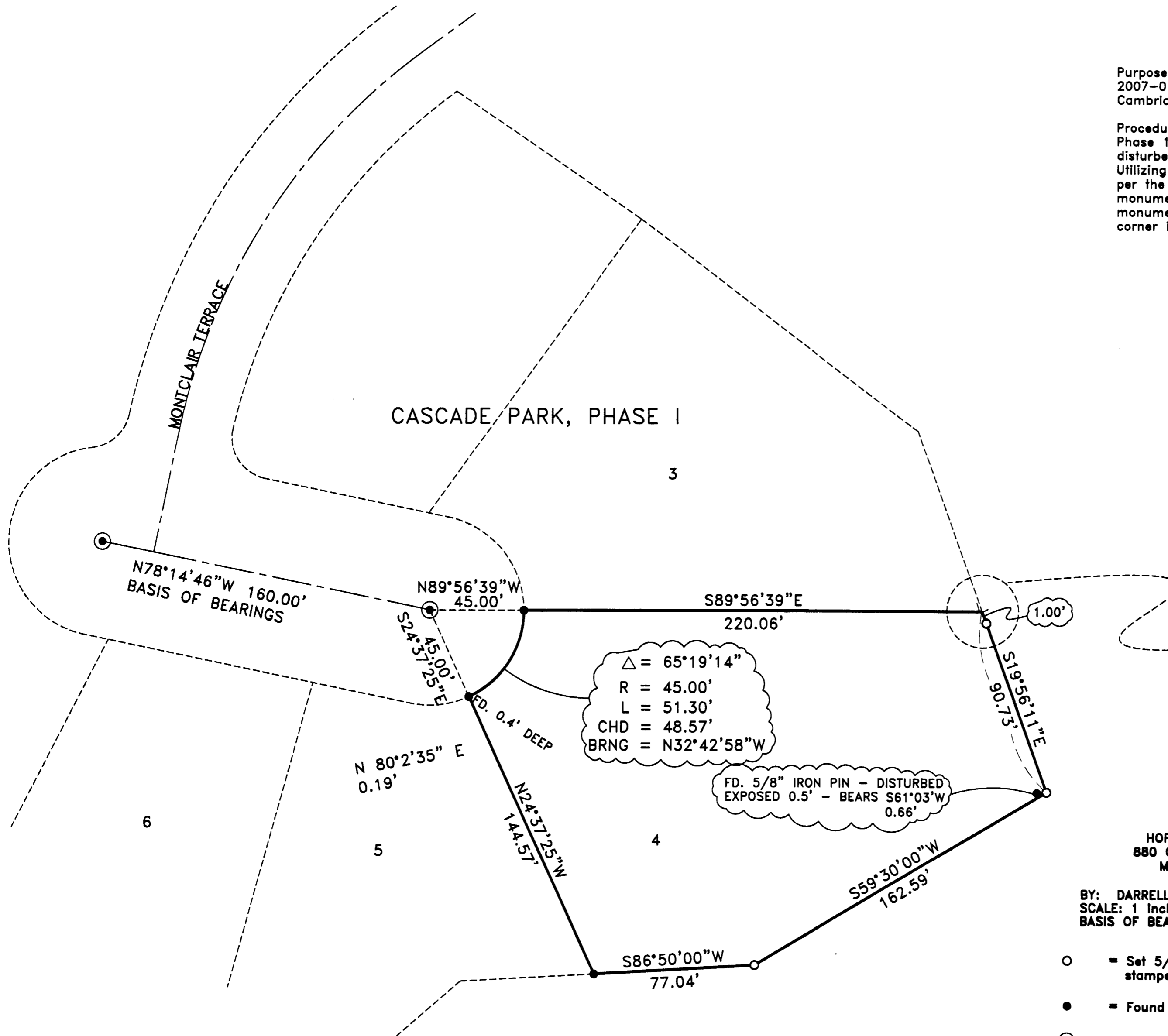
MAP OF SURVEY  
FOR  
STEVE BECHWAR

LOCATED IN:  
LOT 4 OF CAMBRIDGE PARK, PH 1  
THE N.E. 1/4 SECTION 22, T. 37S., R. 1W., W.M.  
CITY OF MEDFORD, JACKSON COUNTY, OREGON

SURVEY NARRATIVE TO COMPLY WITH PARAGRAPH 209.250  
OREGON REVISED STATUTES

Purpose: To survey and monument that property described in Instrument No. 2007-018422 of the Official Records of Jackson County, Oregon, being Lot 4 of Cambridge Park, Phase 1

Procedure: Lot 4 was originally platted and monumented as part of Cambridge Park, Phase 1 in 1994. Since the original time of monumentation, construction activity has disturbed or destroyed some of the lot corners. Utilizing a Trimble S6 robotic instrument, a control traverse was run, tying monuments per the Official Plat of Cambridge Park, Phase 1. The location of the found monuments compared favorably to plat record. I held found road centerline monuments for control and set the missing corners at plat record. The northeast lot corner is obstructed by a metal fence post so I set a 1 foot witness corner as shown.



HOFFBUHR & ASSOCIATES, INC.  
880 GOLF VIEW DRIVE, SUITE 201  
MEDFORD, OREGON 97504  
(541)779-4641  
BY: DARRELL L. HUCK PLS No. 2023  
SCALE: 1 Inch = 40' OCTOBER 23, 2008  
BASIS OF BEARING: CAMBRIDGE PARK, PH 1

- = Set 5/8"x24" Iron reinforcing pin with plastic cap stamped "D. Huck LS 2023".
- = Found 5/8" Iron pin per Cambridge Park, PH 1
- ⊙ = Found brass cap monument per Cambridge Park, PH 1

REGISTERED  
PROFESSIONAL  
LAND SURVEYOR

*Darrell L. Huck*  
OREGON  
FEBRUARY 4, 1982  
DARRELL L. HUCK  
2023

Expires 6/30/2009

(08151-mos.DWG)