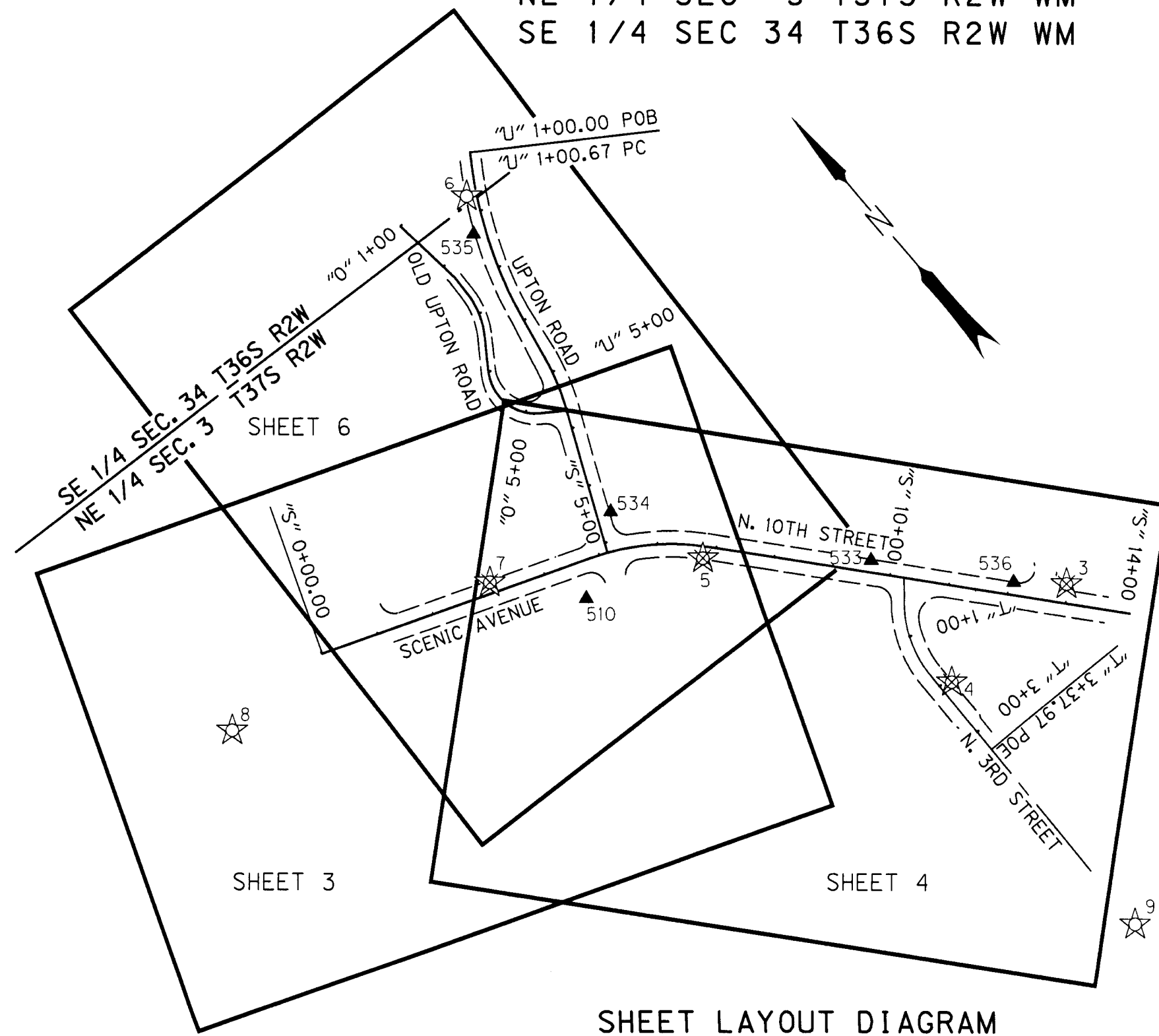


NE 1/4 SEC 3 T37S R2W WM  
SE 1/4 SEC 34 T36S R2W WM

**SHEET INDEX**

1. SHEET LAYOUT AND NARRATIVE
2. CONTROL SCHEMATIC, CONTROL NARRATIVE AND BASIS OF BEARINGS
- 3,4,6. SURVEY
5. MONUMENT RECOVERY AND SET MONUMENT TABLES FOR SHEET 4

**\*\*RECEIVED\*\***  
DATE 6-13-08 BY LB  
This survey consists of:  
6 sheet(s) Map  
0 page(s) Narrative  
JACKSON COUNTY SURVEYOR



**SHEET LAYOUT DIAGRAM**  
NOT TO SCALE

**REFERENCES**

- SUMMERFIELD SUBDIVISION
- SCENIC VILLAGE SUBDIVISION
- AMY'S COTTAGE ADDITION
- ROAD RECORDS VOL. 1, PAGE 160-162
- SEPT. 1912 PETITION #147 FOR SCENIC AVE.
- VOL. 469, PAGE 281, J.C.D.R.
- VOL. 394, PAGE 392, J.C.D.R.
- VOL. 471, PAGE 8, J.C.D.R.
- S.N. 1266
- S.N. 2838
- S.N. 3285
- S.N. 6910
- S.N. 10427
- S.N. 12243
- S.N. 12563
- S.N. 14390
- S.N. 18472
- S.N. 19221

LEGEND	
☆	FOUND GPS POINT PER S.N.19221
☆	DESTROYED GPS POINT PER S.N. 19221
▲	SET NETWORK POINT

**NARRATIVE**

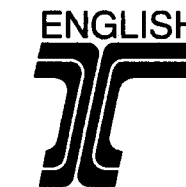
THE PURPOSE OF THIS SURVEY WAS TO MONUMENT THE NEW RIGHT-OF-WAY ACQUIRED FOR THE CONSTRUCTION AND RE-ALIGNMENT OF OLD UPTON ROAD, UPTON ROAD, THIRD STREET, SCENIC AVENUE, AND TENTH STREET. THIS SURVEY WAS MADE AT THE REQUEST OF THE CITY OF CENTRAL POINT. THE NEW RIGHT-OF-WAY ACQUISITIONS ARE BASED ON THE RE-LOCATED ALIGNMENTS AS SHOWN HEREON, IN CONFORMANCE WITH O.R.S. 209.155. CONSTRUCTION OF THIS PROJECT WAS COMPLETED IN THE FALL OF 2007. THE MONUMENTS FOR THE NEW RIGHT-OF-WAY TAKES WERE SET ON FEBRUARY 11, 2008.

REFERENCED RIGHT-OF-WAY DEEDS: INSTRUMENTS NUMBERED 2007-15789, 2007-29846, 2008-03002 AND 2008-29713 (VACATION DEED). THESE DEEDS ARE BASED ON THE ENGINEERS CENTERLINE FOR THE RE-ALIGNMENT OF ALL THE STREETS LISTED AND WERE USED TO DETERMINE THE CENTERLINES SHOWN HEREON.

THE RETRACEMENT SURVEY FILED BY THIS OFFICE AS SURVEY NUMBER 19221, AS FILED IN THE OFFICE OF THE JACKSON COUNTY SURVEYOR, WAS USED TO ESTABLISH EXISTING RIGHT-OF-WAY LOCATIONS. RIGHT-OF-WAY TAKES AS LISTED ABOVE WERE BASED ON THE RE-ALIGNMENT OF THESE RESOLUTIONS AND MAPPED AS SHOWN HEREON. THE EXISTING TANGENT LOCATIONS AND BEARINGS FOR SCENIC AVENUE, THIRD STREET AND TENTH STREET WERE HELD AS SHOWN HEREON.

THIS SURVEY WAS PERFORMED IN INTERNATIONAL FEET. THE BEARING BASE WAS HELD FROM THE ORIGINAL CONTROL NETWORK BEING GRID NORTH PER OREGON SOUTH STATE PLANE NAD 83(CORS96) EPOCH 2002, AS ESTABLISHED ON SURVEY NUMBER 19221. THE CONVERGENCE ANGLE AT POINT NUMBER 1 IS -01°39'30" TO GEODETIC TRUE NORTH.

THE SURVEY EQUIPMENT FOR THIS MONUMENTATION SURVEY CONSISTED OF ONE TRIMBLE S-6 ROBOTIC TOTAL STATION, AND ONE TRIMBLE TSC2 DATA COLLECTOR WITH TRIMBLE SURVEY CONTROLLER SOFTWARE.



REGISTERED PROFESSIONAL LAND SURVEYOR

LOGAN MILES  
OREGON  
JULY 12, 2005  
65452

RENEWAL DATE: DEC. 31, 2008

FILE NAME: 5480551mon.dgn

**OBEC CONSULTING ENGINEERS**  
Corporate Office: 920 COUNTRY CLUB ROAD, SUITE 100B EUGENE, OREGON 97401-6088, 541-683-6090  
2235 MISSION STREET SE, SUITE 100 SALEM, OREGON 97302-1295, 503-589-4100  
1335 POPLAR DRIVE MEDFORD, OREGON 97504-3207, 541-774-5590  
5005 SW MEADOWS ROAD, SUITE 120 LAKE OSWEGO, OREGON 97035, 503-620-6103

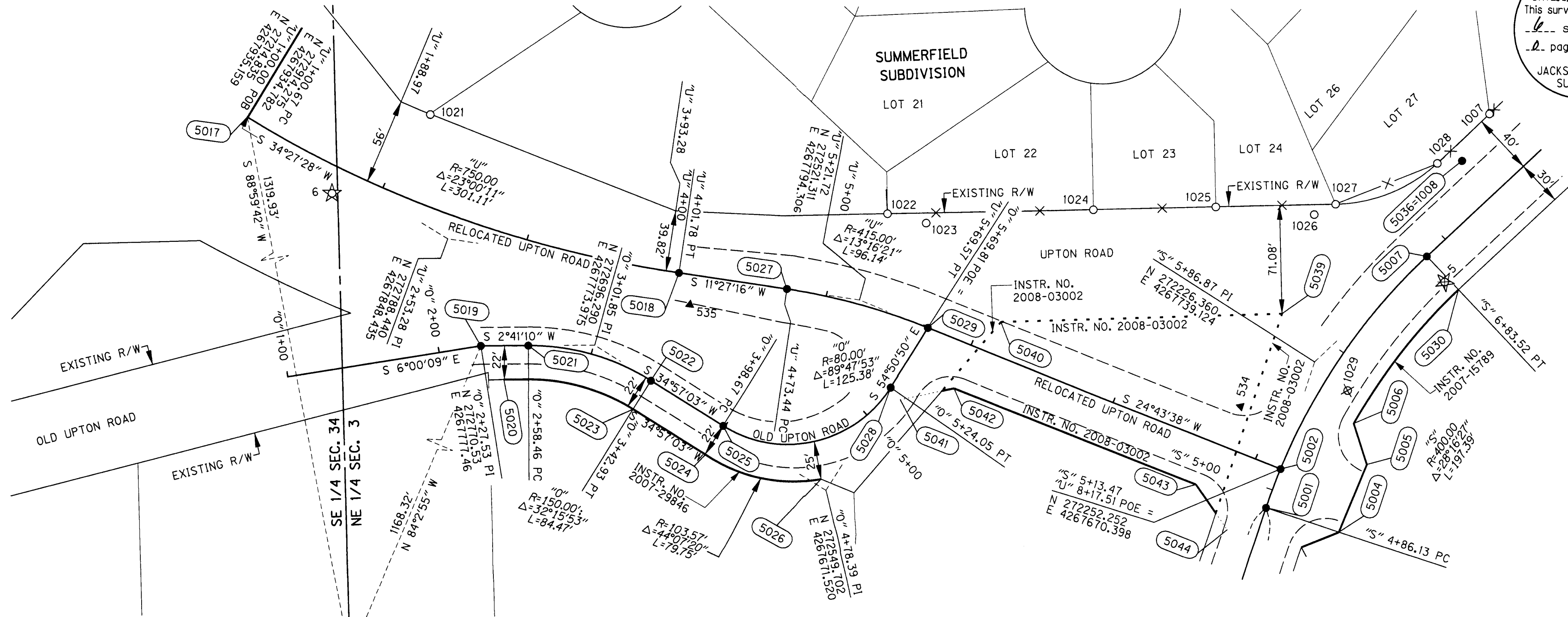
**MONUMENTATION SURVEY**  
UPTON ROAD/SCENIC AVENUE/10TH STREET  
FOR THE CITY OF CENTRAL POINT  
JACKSON COUNTY  
SEPTEMBER 2008

JACKSON COUNTY, OREGON NO SCALE

JIM COLTON	OBEC	DESIGNED: LOGAN MILES	PROJ. NO. 548-05.51	SHT. 1 OF 6
APPROVED BY: GROUP MANAGER TITLE		DRAWN: DAVID JOHN	CHK'D: ANDY AUSLAND	

NE 1/4 SEC 3 T37S R2W WM  
SE 1/4 SEC 34 T36S R2W WM

RECEIVED  
DATE: 8-28-08 BY: [Signature]  
This survey consists of:  
- 6 - sheet(s) Map  
- 2 - page(s) Narrative  
JACKSON COUNTY SURVEYOR



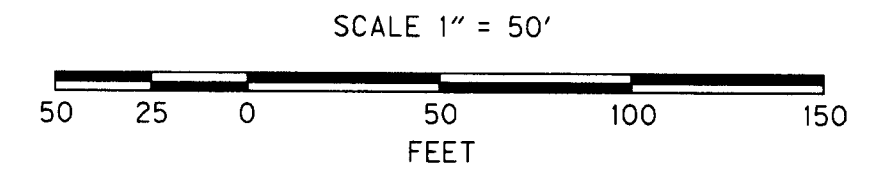
SET MONUMENT LIST AND RIGHT-OF-WAY LOCATION TABLE SEE SHEET 3

PT. ID.	LDP NORTHING	LDP EASTING	STATION	OFFSET	DATE	DESCRIPTION & REFERENCE DOCUMENTS
5017	272914.83	4267935.16	"U" 1+00.00	0.00' RT	N/A	CALCULATED POINT, NO MONUMENT SET
5018	272638.87	4267818.13	"U" 4+01.78	0.00' RT	02-11-08	SET 5/8" x 30" REBAR W/ 3" BRONZE CAP STAMPED "OBEC CONSULTING ENGINEERS, SURVEY MONUMENT"
5019	272770.53	4267777.46	"O" 2+27.53	0.00' RT	02-11-08	SET 5/8" x 30" REBAR W/ 3" BRONZE CAP STAMPED "OBEC CONSULTING ENGINEERS, SURVEY MONUMENT"
5020	272756.66	4267754.78	"O" 2+42.45	22.00' RT	N/A	RIGHT-OF-WAY POINT, NO MONUMENT SET
5021	272739.63	4267776.01	"O" 2+58.46	0.00' RT	02-11-08	SET 5/8" x 30" REBAR W/ 3" BRONZE CAP STAMPED "OBEC CONSULTING ENGINEERS, SURVEY MONUMENT"
5022	272660.73	4267749.12	"O" 3+42.93	0.00' RT	02-11-08	SET 5/8" x 30" REBAR W/ 3" BRONZE CAP STAMPED "OBEC CONSULTING ENGINEERS, SURVEY MONUMENT"
5023	272673.33	4267731.09	"O" 3+42.93	22.00' RT	N/A	RIGHT-OF-WAY POINT, NO MONUMENT SET
5024	272627.65	4267699.16	"O" 3+98.67	22.00' RT	N/A	RIGHT-OF-WAY POINT, NO MONUMENT SET
5025	272615.04	4267717.19	"O" 3+98.67	0.00' RT	02-11-08	SET 5/8" x 30" REBAR W/ 3" BRONZE CAP STAMPED "OBEC CONSULTING ENGINEERS, SURVEY MONUMENT"
5026	272552.48	4267679.10	"O" 4+60.28	25.00' RT	N/A	RIGHT-OF-WAY POINT, NO MONUMENT SET
5027	272568.64	4267803.90	"U" 4+73.44	0.00' RT	02-11-08	SET 5/8" x 30" REBAR W/ 3" BRONZE CAP STAMPED "OBEC CONSULTING ENGINEERS, SURVEY MONUMENT"
5028	272503.80	4267736.70	"O" 5+24.05	0.00' RT	02-11-08	SET 5/8" x 30" REBAR W/ 3" BRONZE CAP STAMPED "OBEC CONSULTING ENGINEERS, SURVEY MONUMENT"
5029	272477.46	4267774.11	"U" 5+69.57	0.00' RT	02-11-08	SET 5/8" x 30" REBAR W/ 3" BRONZE CAP STAMPED "OBEC CONSULTING ENGINEERS, SURVEY MONUMENT"
5039	272245.89	4267771.53	"U" 7+80.98	94.52' LT	N/A	RIGHT-OF-WAY POINT, NO MONUMENT SET
5040	272429.47	4267775.63	"U" 6+12.53	21.45' LT	N/A	RIGHT-OF-WAY POINT, NO MONUMENT SET
5041	272497.99	4267728.52	"U" 5+70.00	50.00' RT	N/A	RIGHT-OF-WAY POINT, NO MONUMENT SET
5042	272462.37	4267734.13	"U" 6+00.00	30.00' RT	N/A	RIGHT-OF-WAY POINT, NO MONUMENT SET
5043	272307.96	4267663.02	"U" 7+70.00	30.00' RT	N/A	RIGHT-OF-WAY POINT, NO MONUMENT SET
5044	272289.07	4267632.31	"U" 8+00.00	50.00' RT	N/A	RIGHT-OF-WAY POINT, NO MONUMENT SET

DN = DOWN SN = SURVEY NUMBER  
FND = FOUND YPC = YELLOW PLASTIC CAP

**LEGEND**

- SET MONUMENT, AS INDICATED IN TABLES
- FOUND MONUMENT
- ⊗ DESTROYED MONUMENT
- ☆ DESTROYED GPS POINT PER S.N. 19221
- ▲ SET NETWORK POINT
- EXISTING RIGHT-OF-WAY
- R/W PURCHASE LINE
- ... ACQUIRED R/W LINE
- EDGE OF PAVEMENT
- X- FENCE
- (XXXX) RIGHT-OF-WAY POINT NO.
- ( ) RECORD PER CS 19221



RECOVERED MONUMENT LIST

PT. ID.	LDP NORTHING	LDP EASTING	STATION	OFFSET	DATE	DESCRIPTION & REFERENCE DOCUMENTS
1021	272795.50	4267930.28	"U" 2+09.67	56.18' LT	02-27-2006	FND 5/8" REBAR, DN 1.1' & BENT, TIED AT SPIN HOLE - SUMMERFIELD SUBDIVISION
1022	272500.01	4267849.82	"U" 5+24.13	62.19' LT	02-27-2006	FND 5/8" REBAR W/ YPC "LJ FRIAR & ASSOC", FLUSH - SUMMERFIELD SUBDIVISION
1023	272474.98	4267842.56	"U" 5+46.70	63.94' LT	02-27-2006	FND 5/8" REBAR, BENT AND TIED AT SPIN HOLE - SN 12243
1024	272365.23	4267845.94	"U" 6+41.47	112.19' LT	02-27-2006	FND 5/8" REBAR W/ YPC "LJ FRIAR & ASSOC", UP 0.1' - SUMMERFIELD SUBDIVISION
1025	272285.27	4267843.69	"U" 7+15.03	143.59' LT	02-27-2006	FND 5/8" REBAR W/ YPC "LJ FRIAR & ASSOC", DN 0.1' - SUMMERFIELD SUBDIVISION
1026	272221.48	4267835.45	"U" 7+76.42	162.79' LT	02-27-2006	FND 5/8" REBAR W/ YPC "KAISER RLS 803", WITNESS CORNER, DN 0.3' - SN 12243
1027	272207.21	4267841.55	"U" 7+86.83	174.30' LT	02-27-2006	FND 5/8" REBAR W/ YPC "LJ FRIAR & ASSOC", DN 0.2' - SUMMERFIELD SUBDIVISION

REGISTERED PROFESSIONAL LAND SURVEYOR  
[Signature]  
OREGON JULY 12, 2005  
LOGAN MILES 65452  
RENEWAL DATE: DEC. 31, 2008

OBEC CONSULTING ENGINEERS  
Corporate Office: 920 COUNTRY CLUB ROAD, SUITE 100B EUGENE, OREGON 97401-6088, 541-683-6090  
2235 MISSION STREET SE, SUITE 100 SALEM, OREGON 97302-1295, 503-589-4100  
1335 POPLAR DRIVE MEDFORD, OREGON 97504-5207, 541-774-5590  
5005 SW MEADOWS ROAD, SUITE 120 LAKE OSWEGO, OREGON 97035, 503-620-6103  
www.obec.com

**MONUMENTATION SURVEY**  
UPTON ROAD/SCENIC AVENUE/10TH STREET  
FOR THE CITY OF CENTRAL POINT  
JACKSON COUNTY  
SEPTEMBER 2008

JACKSON COUNTY, OREGON SCALE 1" = 50'

DESIGNED: LOGAN MILES PROJ. NO. 548-05.51 SHT. 6 OF 6  
DRAWN: DAVID JOHN CHK'D: ANDY AUSLAND

NE 1/4 SEC 3 T37S R2W WM  
SE 1/4 SEC 34 T36S R2W WM

**\*\*RECEIVED\*\***  
DATE 6-13-2008 BY LB  
This survey consists of:  
.. 11 sheet(s) Map  
.. 0 page(s) Narrative  
JACKSON COUNTY  
SURVEYOR

SET MONUMENT LIST AND  
RIGHT-OF-WAY LOCATION TABLE (FOR SHEET 4)

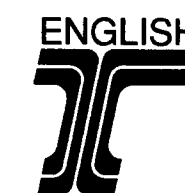
NO. = POINT NUMBER  
OPC = ORANGE PLASTIC CAP

PT. ID.	LDP NORTHING	LDP EASTING	STATION	OFFSET	DATE	DESCRIPTION & REFERENCE DOCUMENTS
5008	271891.15	4268023.95	"S" 10+22.65	0.00' RT	02-11-08	SET 5/8" x 30" REBAR W/ 3" BRONZE CAP STAMPED "OBEC CONSULTING ENGINEERS, SURVEY MONUMENT"
5009	271710.10	4268177.74	"S" 12+60.20	0.03' RT	02-11-08	SET 5/8" x 30" REBAR W/ 3" BRONZE CAP STAMPED "OBEC CONSULTING ENGINEERS, SURVEY MONUMENT"
5010	271730.55	4268201.83	"S" 12+60.21	31.56' LT	02-11-08	SET 5/8" x 30" REBAR W/ 3" BRONZE CAP STAMPED "OBEC CONSULTING ENGINEERS, SURVEY MONUMENT"
5011	271822.77	4268057.56	"T" 0+30.00	70.04' LT	N/A	RIGHT-OF-WAY POINT, NO MONUMENT SET
5012	271821.03	4268044.16	"T" 0+40.04	61.00' LT	N/A	RIGHT-OF-WAY POINT, NO MONUMENT SET
5013	271815.63	4268002.46	"T" 0+77.00	30.00' LT	N/A	RIGHT-OF-WAY POINT, NO MONUMENT SET
5014	271734.47	4267979.62	"T" 1+77.24	30.00' LT	N/A	RIGHT-OF-WAY POINT, NO MONUMENT SET
5015	271735.19	4267949.63	"T" 1+77.24	0.00' RT	02-11-08	SET 5/8" x 30" REBAR W/ 3" BRONZE CAP STAMPED "OBEC CONSULTING ENGINEERS, SURVEY MONUMENT"
5016	271582.47	4267945.99	"T" 3+30.00	0.00' RT	02-11-08	SET 5/8" x 30" REBAR W/ 3" BRONZE CAP STAMPED "OBEC CONSULTING ENGINEERS, SURVEY MONUMENT"
5031	271860.69	4267997.80	"T" 0+40.15	0.00' RT	02-11-08	SET 5/8" x 30" REBAR W/ 3" BRONZE CAP STAMPED "OBEC CONSULTING ENGINEERS, SURVEY MONUMENT"
5032	271961.29	4267925.08	"S" 9+05.20	29.95' RT	02-11-08	SET 5/8" x 30" REBAR W/ OPC "OBEC LS 65452" (RESET AS FOUND TO REPLACE DESTROYED NO.1017)
5033	271859.87	4267922.60	"T" 0+78.34	61.29' RT	02-11-08	SET 5/8" x 30" REBAR W/ OPC "OBEC LS 65452" (RESET AS FOUND TO REPLACE DESTROYED NO.1018)
5034	271619.90	4267916.84	"T" 2+93.28	30.03' RT	02-11-08	SET 1" COPPER PLUG IN CONC. "OBEC" (RESET AS FOUND TO REPLACE DESTROYED NO.1019)
5035	271573.79	4267975.82	"T" 3+37.97	30.03' LT	02-11-08	SET 1" COPPER PLUG IN CONC. "OBEC" (RESET AS FOUND TO REPLACE DESTROYED NO.1020)
5036	272123.45	4267866.08	"S" 7+43.40	30.11' LT	02-11-08	SET 5/8" x 30" REBAR W/ OPC "OBEC LS 65452" (RESET AS FOUND TO REPLACE DESTROYED NO.1008)
5045	271961.28	4267925.00	"T" 0+11.23	120.76' RT	N/A	RIGHT-OF-WAY POINT, NO MONUMENT SET
5046	271902.31	4267975.10	"T" 0+23.35	44.34 RT	N/A	RIGHT-OF-WAY POINT, NO MONUMENT SET
5047	271880.23	4267975.04	"T" 0+40.15	30.00 RT	N/A	RIGHT-OF-WAY POINT, NO MONUMENT SET
5048	271735.90	4267919.63	"T" 1+77.24	30.00' RT	N/A	RIGHT-OF-WAY POINT, NO MONUMENT SET

DN = DOWN  
FND = FOUND  
SN = SURVEY NUMBER  
YPC = YELLOW PLASTIC CAP  
(D/R)= DESTROYED & RESET AS INDICATED IN THE ABOVE TABLE

RECOVERED MONUMENT LIST (FOR SHEET 4)

PT. ID.	LDP NORTHING	LDP EASTING	STATION	OFFSET	DATE	DESCRIPTION & REFERENCE DOCUMENTS
1000	271703.78	4268235.74	"S" 13+02.57	40.07' LT	02-23-2006	FND 5/8" REBAR W/ YPC "LJ FRIAR & ASSOC", DN 0.4' - SUMMERFIELD SUBDIVISION
1001	271776.35	4268173.99	"S" 12+07.28	40.01' LT	02-23-2006	FND 5/8" REBAR W/ YPC "LJ FRIAR & ASSOC", DN 0.5' - SUMMERFIELD SUBDIVISION
1002	271838.12	4268121.57	"S" 11+26.27	40.06' LT	02-23-2006	FND 5/8" REBAR W/ YPC "LJ FRIAR & ASSOC", UP 0.2' - SUMMERFIELD SUBDIVISION
1003	271884.74	4268081.83	"S" 10+65.01	39.96' LT	02-23-2006	FND 5/8" REBAR W/ YPC "LJ FRIAR & ASSOC", DN 0.2' - SUMMERFIELD SUBDIVISION
1004	271931.66	4268041.94	"S" 10+03.42	39.94' LT	02-23-2006	FND 5/8" REBAR W/ YPC "LJ FRIAR & ASSOC", UP 0.1' - SUMMERFIELD SUBDIVISION
1005	271978.08	4268002.56	"S" 9+42.55	39.99' LT	02-27-2006	FND 5/8" REBAR W/ YPC "LJ FRIAR & ASSOC", DN 0.3' - SUMMERFIELD SUBDIVISION
1006	272024.79	4267962.86	"S" 8+81.25	39.98' LT	02-27-2006	FND 5/8" REBAR W/ YPC "LJ FRIAR & ASSOC", DN 0.3' - SUMMERFIELD SUBDIVISION
1007	272104.04	4267895.58	"S" 7+77.29	40.02' LT	02-27-2006	FND 5/8" REBAR W/ YPC "LJ FRIAR & ASSOC", DN 0.3' - SUMMERFIELD SUBDIVISION
1008	272123.45	4267866.08	"S" 7+43.40	30.11' LT	02-27-2006	FND 5/8" REBAR W/ YPC "KAISER RLS 803", WITNESS CORNER, DN 0.5' - SN 12243 (D/R)
1009	271710.10	4268177.74	"S" 12+60.20	0.03' RT	02-23-2006	FND 2-1/2" BRASS DISK "LJ FRIAR & ASSOC" - SUMMERFIELD SUBDIVISION (D/R)
1010	271730.55	4268201.83	"S" 12+60.21	31.56' LT	02-23-2006	FND 2-1/2" BRASS DISK "LJ FRIAR & ASSOC" - SUMMERFIELD SUBDIVISION (D/R)
1011	271696.95	4268149.73	"S" 12+52.08	29.89' RT	02-23-2006	FND 5/8" REBAR W/ YPC "LJ FRIAR & ASSOC", FLUSH - SN 6910
1012	271697.39	4268128.69	"S" 12+38.12	45.64' RT	02-23-2006	FND 5/8" REBAR W/ YPC "LJ FRIAR & ASSOC", FLUSH - SN 6910
1013	271850.01	4268019.55	"S" 10+51.15	29.99' RT	02-23-2006	FND 5/8" REBAR W/ YPC "LJ FRIAR & ASSOC", FLUSH - SN 6910 (DESTROYED)
1014	271850.92	4267982.34	"T" 0+57.13	6.12' RT	02-23-2006	FND 5/8" REBAR W/ YPC "LJ FRIAR & ASSOC", DN 0.7' - SN 6910 (DESTROYED)
1016	271971.99	4267955.26	"S" 9+16.56	0.00' RT	02-23-2006	FND REBAR, DN 1.0' - UNKNOWN ORIGIN (DESTROYED)
1017	271961.26	4267925.08	"S" 9+05.20	29.95' RT	02-23-2006	FND 5/8" REBAR, DN 0.7' - SN 1266 (D/R)
1018	271859.87	4267922.60	"T" 0+78.34	61.29' RT	02-23-2006	FND IRON PIPE, 1.0' (ID), DN 0.5' - SN 1266 (D/R)
1019	271619.90	4267916.84	"T" 2+93.28	30.03' RT	02-23-2006	FND 0.16" BRASS DISK, FLUSH - ROYAL HEIGHTS EXTENSION NO.1 (D/R)
1020	271573.79	4267975.82	"T" 3+37.97	30.03' LT	02-23-2006	FND LEAD & TACK W/ WASHER "LJ FRIAR & ASSOC", FLUSH - SN 6910 (D/R)
1028	272139.64	4267865.22	"S" 7+30.50	39.94' LT	02-27-2006	FND 5/8" REBAR W/ YPC "LJ FRIAR & ASSOC", DN 1.0' - SUMMERFIELD SUBDIVISION
1029	272205.79	4267719.58	"S" 5+80.70	15.58' RT	02-27-2006	FND 5/8" REBAR, DN 0.2' & BENT, TIED AT SPIN HOLE - SN 1266 (DESTROYED)



REGISTERED  
PROFESSIONAL  
LAND SURVEYOR  
*Logan Miles*  
OREGON  
JULY 12, 2005  
LOGAN MILES  
65452  
RENEWAL DATE: DEC. 31, 2008

FILE NAME: 5480551mon.dgn

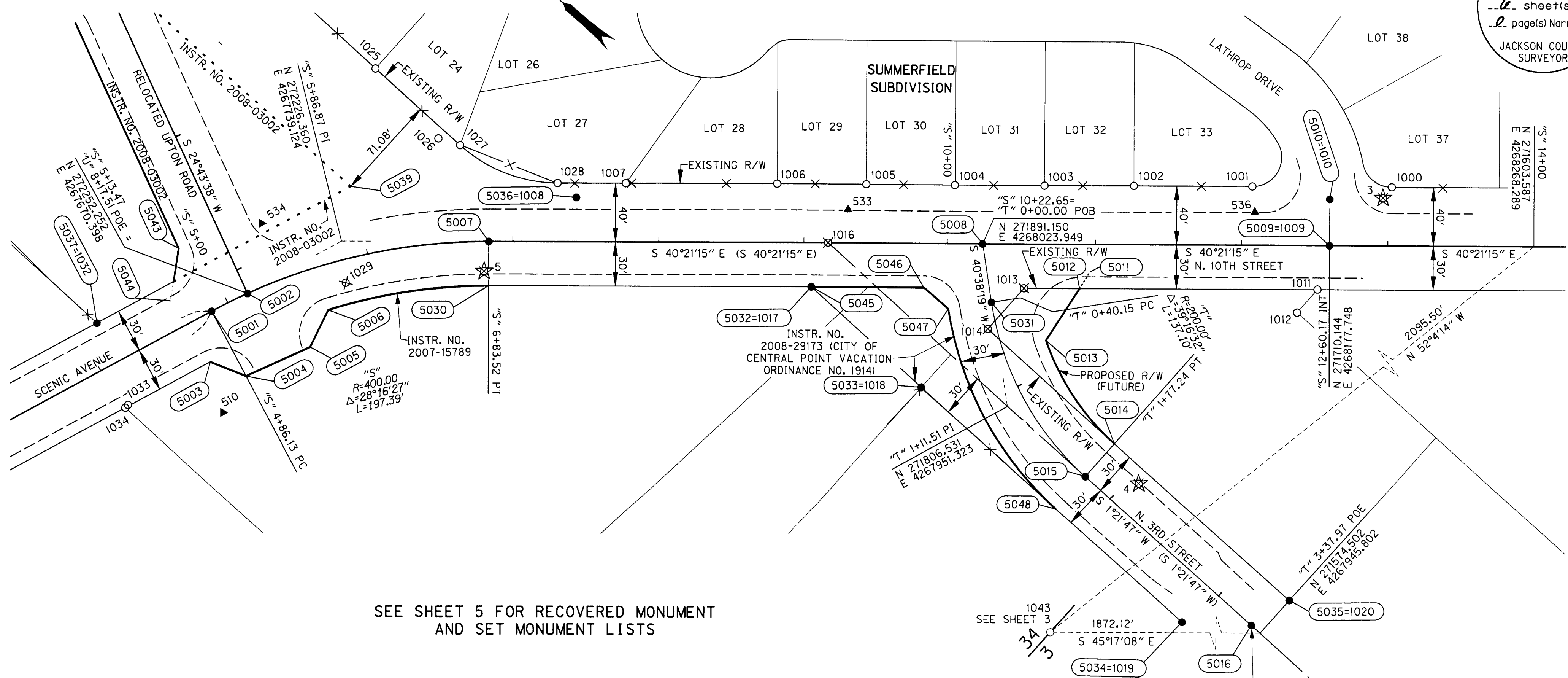
OBEC CONSULTING ENGINEERS  
Corporate Office: 920 COUNTRY CLUB ROAD, SUITE 100B EUGENE, OREGON 97401-6088, 541-683-6080  
2235 MISSION STREET SE, SUITE 100 SALEM, OREGON 97302-1295, 503-589-4100  
1335 POPLAR DRIVE, MEDFORD, OREGON 97504-5207, 541-774-5590  
3005 SW MEADOWS ROAD, SUITE 120 LAKE OSWEGO, OREGON 97035, 503-620-6103

MONUMENTATION SURVEY  
UPTON ROAD/SCENIC AVENUE/10TH STREET  
FOR THE CITY OF CENTRAL POINT  
JACKSON COUNTY  
SEPTEMBER 2008

JACKSON COUNTY, OREGON NO SCALE  
DESIGNED: LOGAN MILES PROJ. NO. 548-05.51 SHT. 5 OF 6  
APPROVED BY: GROUP MANAGER TITLE DRAWN: DAVID JOHN CHK'D: ANDY AUSLAND

NE 1/4 SEC 3 T37S R2W WM  
SE 1/4 SEC 34 T36S R2W WM

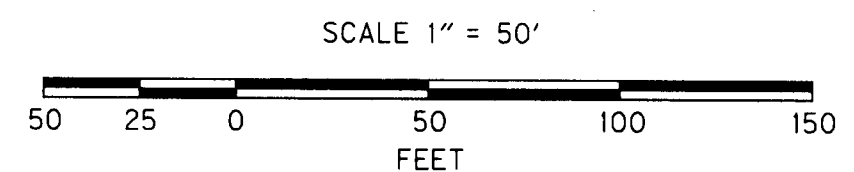
**\*\* RECEIVED \*\***  
DATE 6-23-08 BY DB  
This survey consists of:  
12 sheet(s) Map  
2 page(s) Narrative  
JACKSON COUNTY SURVEYOR



SEE SHEET 5 FOR RECOVERED MONUMENT  
AND SET MONUMENT LISTS

THE ACTUAL END OF ALIGNMENT IS ON A UTILITY CROSSING SO  
THE MONUMENT WAS PULLED BACK TO A STATION ONLINE AS  
SHOWN HEREON, A MAG NAIL WAS SET FOR THE ACTUAL END OF  
THE ALIGNMENT AT "T" 3+37.97 POE.

LEGEND	
●	SET MONUMENT, AS INDICATED IN TABLES
○	FOUND MONUMENT
⊗	DESTROYED MONUMENT
☆	DESTROYED GPS POINT PER S.N. 19221
▲	SET NETWORK POINT
—	EXISTING RIGHT-OF-WAY
—	R/W PURCHASE LINE
---	AQUIRED R/W LINE
---	EDGE OF PAVEMENT
-x-	FENCE
(XXXX)	RIGHT-OF-WAY POINT NO.
( )	RECORD PER CS 19221



**ENGLISH**  
**REGISTERED PROFESSIONAL LAND SURVEYOR**  
*Log Miles*  
OREGON  
JULY 12, 2005  
**LOGAN MILES**  
65452  
RENEWAL DATE: DEC. 31, 2008

Corporate Office: 920 COUNTRY CLUB ROAD, SUITE 100B EUGENE, OREGON 97401-8088, 541-883-8090  
2235 MISSION STREET SE, SUITE 100 SALEM, OREGON 97302-1295, 503-589-4100  
1335 POPLAR DRIVE MEDFORD, OREGON 97504-5207, 541-774-5590  
5005 SW MEADOWS ROAD, SUITE 120 LAKE OSWEGO, OREGON 97035, 503-620-8103  
www.obec.com

**MONUMENTATION SURVEY**  
**UPTON ROAD/SCENIC AVENUE/10TH STREET**  
**FOR THE CITY OF CENTRAL POINT**  
**JACKSON COUNTY**  
SEPTEMBER 2008

JACKSON COUNTY, OREGON SCALE 1" = 50'  
DESIGNED: LOGAN MILES PROJ. NO. 548-05.51 SHT. 4 OF 6  
APPROVED BY: GROUP MANAGER TITLE DRAWN: DAVID JOHN CHK'D: ANDY AUSLAND





NE 1/4 SEC 3 T37S R2W WM  
SE 1/4 SEC 34 T36S R2W WM

**\*\*RECEIVED\*\***  
DATE 6-13-08 BY BB  
This survey consists of:  
4 sheet(s) Map  
2 page(s) Narrative  
JACKSON COUNTY  
SURVEYOR

RESIDUALS FOR DISTANCES

BETWEEN	DISTANCE**	DISTANCE RESIDUAL
3 510	808.50'	0.02'
510 7	173.51'	0.02'
510 6	709.11'	0.02'

\*\* CALCULATED HORIZONTAL DISTANCES IN FEET DERIVED FROM THE MEASURED SLOPE DISTANCES

RESIDUALS FOR ANGLES

BACKSIGHT STATION	OCCUPIED STATION	FORESIGHT STATION	RESIDUAL
4	3	510	-00°00'02"
3	510	7	-00°00'19"
3	510	6	-00°00'01"
510	7	8	-00°00'32"

1.96 SIGMA (95%) CONFIDENCE LEVEL LIMITS

POINT NO.	SEMI MAJOR	SEMI MINOR	ORIENTATION*
510	0.02 ift	0.02 ift	270°26'21"

\* NORTH AZIMUTH

FIXED POINTS NOT SUBJECT TO LEAST SQUARES  
ADJUSTMENT OR CONFIDENCE LEVEL ANALYSIS: 3, 4, 6, 7, 8  
(PRIOR TO DESTROY OF 3, 4 & 7)

CONTROL NARRATIVE

PROJECT: UPTON ROAD/SCENIC AVENUE/TENTH STREET INTERSECTION REALIGNMENT PROJECT  
LOCATION: CENTRAL POINT, JACKSON COUNTY, OREGON  
OBEC PROJECT: 548-5.51  
SURVEY DATUM:  
HORIZONTAL - LOCAL DATUM PLANE (LDP) DERIVED FROM NAD 83(CORS96) EPOCH 2002 (INTERNATIONAL FEET)  
BEARING BASE: GRID NORTH PER SURVEY NUMBER 19221

THE INITIAL CONTROL NETWORK MONUMENTATION WAS ESTABLISHED IN RETRACEMENT SURVEY NUMBER 19221. THIS CONTROL NETWORK WAS USED AS SHOWN HEREON. FIVE NEW POINTS WERE ADDED TO THE EXISTING CONTROL NETWORK, REPLACING POINTS LOST DURING THE CONSTRUCTION OF INTERSECTION RE-ALIGNMENT. SECOND AND THIRD ADJUSTMENT WERE MADE TO THE NEW CONVENTIONALLY SET NETWORK POINTS CONSTRAINING TO THE REMAINING CONTROL MONUMENTS SET IN 2006 AS FILED ON SURVEY NUMBER 19221.

THIS SURVEY UTILIZED A LOCAL DATUM PLANE (LDP) COORDINATE SYSTEM, WHICH IS RELATIVE TO THE OREGON STATE PLANE COORDINATE SYSTEM - SOUTH ZONE, NAD 83(CORS96) EPOCH 2002 (INTERNATIONAL FEET). TO CONVERT THE LDP COORDINATES TO THE OREGON STATE PLANE COORDINATE SYSTEM - SOUTH ZONE, NAD 83(CORS96) EPOCH 2002 (INTERNATIONAL FEET), MULTIPLY THE LDP COORDINATE VALUES BY A COMBINED FACTOR OF 0.99992725.

CONTROL POINTS FOR THIS SURVEY WERE NOT SET ON NOR DO THEY REPRESENT PROPERTY LINES OR RIGHT-OF-WAY LINES AND ARE INTENDED FOR USE SOLELY BY THE CITY OF CENTRAL POINT AND OBEC CONSULTING ENGINEERS IN SUPPORT OF FUTURE PROJECTS. IT IS NOT OUR INTENT TO PERPETUATE THESE CONTROL POINTS AS MONUMENTS.

RESIDUALS FOR DISTANCES

BETWEEN	DISTANCE**	DISTANCE RESIDUAL
510 533	450.22'	-0.01'
510 536	720.68'	0.00'
536 533	278.91'	0.01'
533 534	402.38'	0.01'
533 9	671.02'	0.08'
534 510	131.04'	0.00'
534 6	610.32'	0.03'
534 535	366.60'	0.01'
535 510	464.88'	0.02'
535 6	244.84'	0.02'

\*\* CALCULATED HORIZONTAL DISTANCES IN FEET DERIVED FROM THE MEASURED SLOPE DISTANCES

RESIDUALS FOR ANGLES

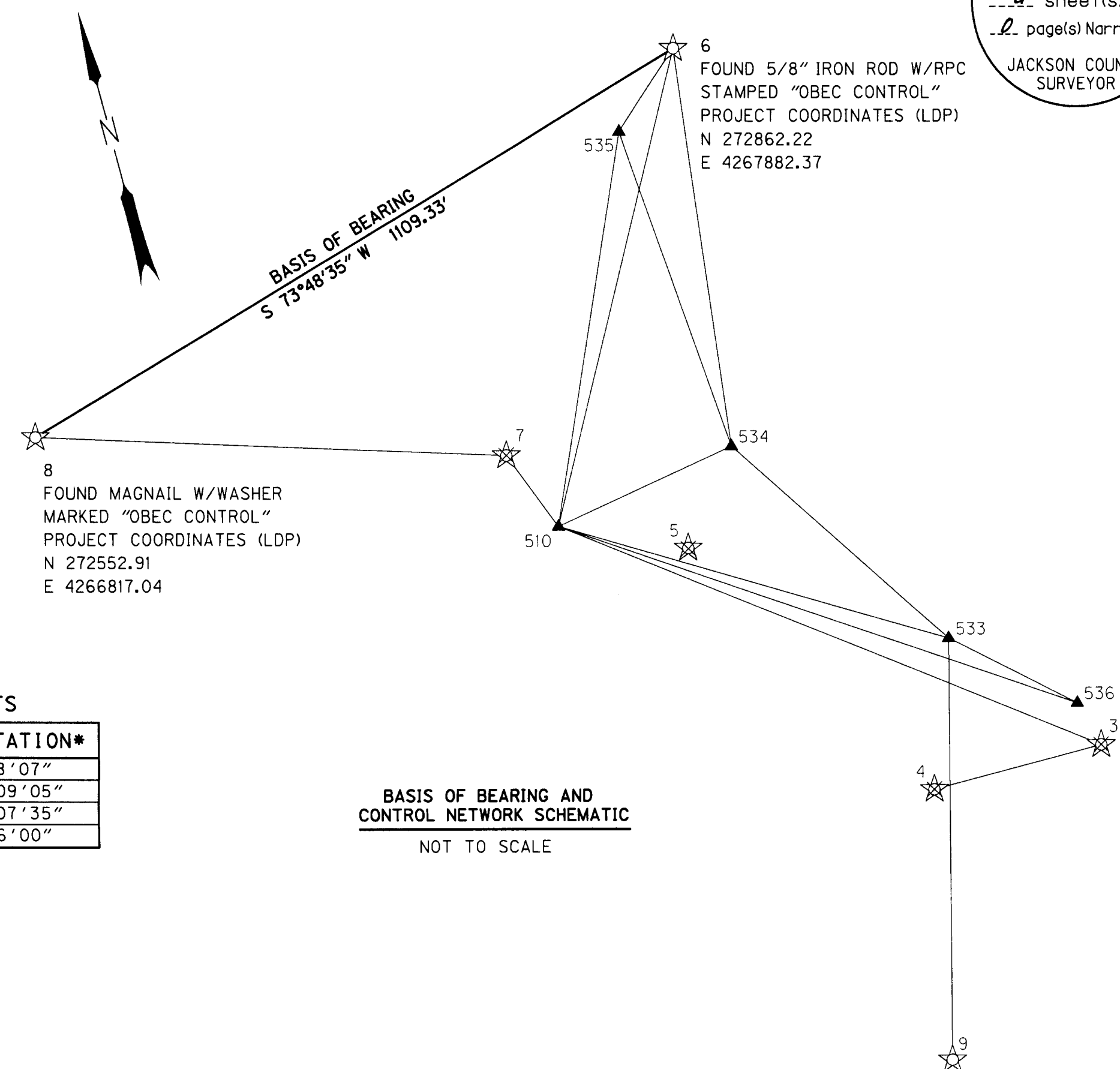
BACKSIGHT STATION	OCCUPIED STATION	FORESIGHT STATION	RESIDUAL
6	510	533	00°00'02"
6	510	536	00°00'09"
510	536	533	-00°00'17"
536	533	534	00°00'08"
536	533	9	-00°00'05"
533	534	510	-00°00'18"
533	534	6	-00°00'04"
533	534	535	00°00'02"
534	535	510	00°00'10"
534	535	6	00°00'00"
534	6	510	00°00'10"

1.96 SIGMA (95%) CONFIDENCE LEVEL LIMITS

POINT NO.	SEMI MAJOR	SEMI MINOR	ORIENTATION*
533	0.02 ift	0.02 ift	17°48'07"
534	0.02 ift	0.02 ift	355°09'05"
535	0.03 ift	0.02 ift	346°07'35"
536	0.03 ift	0.02 ift	48°06'00"

\* NORTH AZIMUTH

FIXED POINTS NOT SUBJECT TO LEAST SQUARES  
ADJUSTMENT OR CONFIDENCE LEVEL ANALYSIS: 6, 9, 510



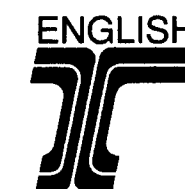
BASIS OF BEARING AND CONTROL NETWORK SCHEMATIC  
NOT TO SCALE

LEGEND	
☆	FND MONUMENT USED AS NETWORK CONTROL POINT PER S.N. 19221
▲	SET NETWORK POINT
—▲—▲—	LINE OF OBSERVATION
☆	DESTROYED NETWORK CONTROL POINT PER S.N. 19221

NETWORK POINT COORDINATE TABLE

PT. ID.	LDP NORTHING	LDP EASTING	DESCRIPTION
3	271703.43	4268226.08	FND 5/8" REBAR W/ RPC "OBEC CONTROL" (DESTROYED AFTER THE ESTABLISHMENT OF 510)
4	271704.26	4267969.70	FND MAGNAIL & WASHER "OBEC CONTROL" (DESTROYED AFTER THE ESTABLISHMENT OF 510)
5	272138.89	4267786.97	FND 5/8" REBAR W/ RPC "OBEC CONTROL"
6	272862.22	4267882.37	FND 5/8" REBAR W/ RPC "OBEC CONTROL"
7	272345.54	4267486.54	FND MAGNAIL & WASHER "OBEC CONTROL" (DESTROYED AFTER THE ESTABLISHMENT OF 510)
8	272552.91	4266817.04	FND MAGNAIL & WASHER "OBEC CONTROL"
9	271311.24	4267891.08	FND MAGNAIL & WASHER "OBEC CONTROL"
510	272212.60	4267598.05	SET 5/8" REBAR W/ RPC "OBEC CONTROL"
533	271976.18	4267981.20	SET MAGNAIL & WASHER "OBEC CONTROL"
534	272275.94	4267712.77	SET MAGNAIL & WASHER "OBEC CONTROL"
535	272632.70	4267797.12	SET MAGNAIL & WASHER "OBEC CONTROL"
536	271763.66	4268161.82	SET MAGNAIL & WASHER "OBEC CONTROL"

FND=FOUND  
RPC=RED PLASTIC CAP



REGISTERED PROFESSIONAL LAND SURVEYOR

OREGON JULY 12, 2005 LOGAN MILES 65452

RENEWAL DATE: DEC. 31, 2008

Corporate Office: 920 COUNTRY CLUB ROAD, SUITE 100B EUGENE, OREGON 97401-6089, 541-683-6090  
2235 MISSION STREET SE, SUITE 100 SALEM, OREGON 97302-1295, 503-589-4100  
1335 POPLAR DRIVE MEDFORD, OREGON 97504-5207, 541-774-5590  
5005 SW MEADOWS ROAD, SUITE 120 LAKE OSWEGO, OREGON 97035, 503-620-6103  
www.obec.com

MONUMENTATION SURVEY  
UPTON ROAD/SCENIC AVENUE/10TH STREET  
FOR THE CITY OF CENTRAL POINT  
JACKSON COUNTY  
SEPTEMBER 2008

JACKSON COUNTY, OREGON NO SCALE  
DESIGNED: LOGAN MILES PROJ. NO. 548-05.51 SHT. 2 OF 6  
DRAWN: DAVID JOHN CHK'D: ANDY AUSLAND

JIM COLTON OBEC  
APPROVED BY: GROUP MANAGER TITLE