

MAP OF STREET CENTERLINE MONUMENT REPLACEMENT

LOCATED IN THE ORIGINAL TOWN OF CENTRAL POINT AND PATERSON ADDITION AND OAK PARK ADDITION
TOWNSHIP 37 SOUTH, RANGE 2 WEST, SECTION 2, W.M. JACKSON COUNTY, OREGON

MARCH 14, 2008

NARRATIVE: THIS MAP IS INTENDED TO CREATE AN OFFICIAL RECORD OF STREET CENTERLINE MONUMENT REPLACEMENTS IN THE CITY OF CENTRAL POINT. THE MAP REFLECTS A DESCRIPTION OF THE ORIGINAL MONUMENT AND THE NATURE OF THE REPLACEMENT MONUMENT. UNLESS OTHERWISE NOTED, ALL FOUND MONUMENTS WERE REPLACED WITH A STANDARD CITY MONUMENT CASE, WITH A 2" PIPE AND 2 1/2" BRASS CAP CONSTRUCTED INSIDE. BRASS CAPS WERE STAMPED WITH "LS 2271" AND A DRILL HOLE MADE AT THE CENTERLINE POSITION AS REFERENCED FROM THE ORIGINAL MONUMENT.

THE REFERENCING AND REPLACEMENT WORK WAS DONE SOME TIME BACK, HOWEVER NEVER FOLLOWED BY A MAP DUE TO CONFUSION RELATED TO CITY POLICY REGARDING CENTERLINE MONUMENT REPLACEMENT.

THE JACKSON COUNTY SURVEYOR HAS REQUESTED THAT WE MAP THE ACTIVITY IN ORDER TO PRESERVE A HISTORY OF THE CITY STREET CENTERLINE MONUMENTATION, AND WE AGREE.

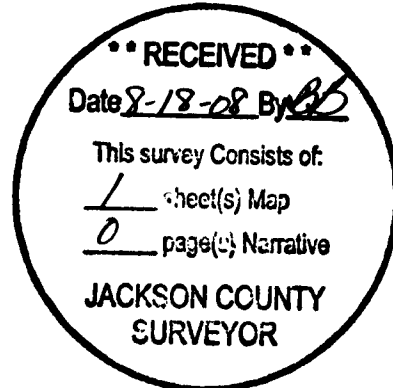
MEASUREMENTS WERE MADE WITH A WILD T-1000 TOTAL STATION

- MONUMENT FOUND AS NOTED
- ✦ MONUMENT FOUND AS NOTED, REMOVED BY CONSTRUCTION, REPLACED WITH STANDARD CITY OF CENTRAL POINT MONUMENT CASE OR POSITION RE-ESTABLISHED AND MONUMENTED

BASIS OF BEARING ALONG THE CENTERLINE OF CHERRY STREET PER THE ORIGINAL PLAT OF CENTRAL POINT, OREGON DATED 1887, N54°30'00"E

SURVEY FOR:

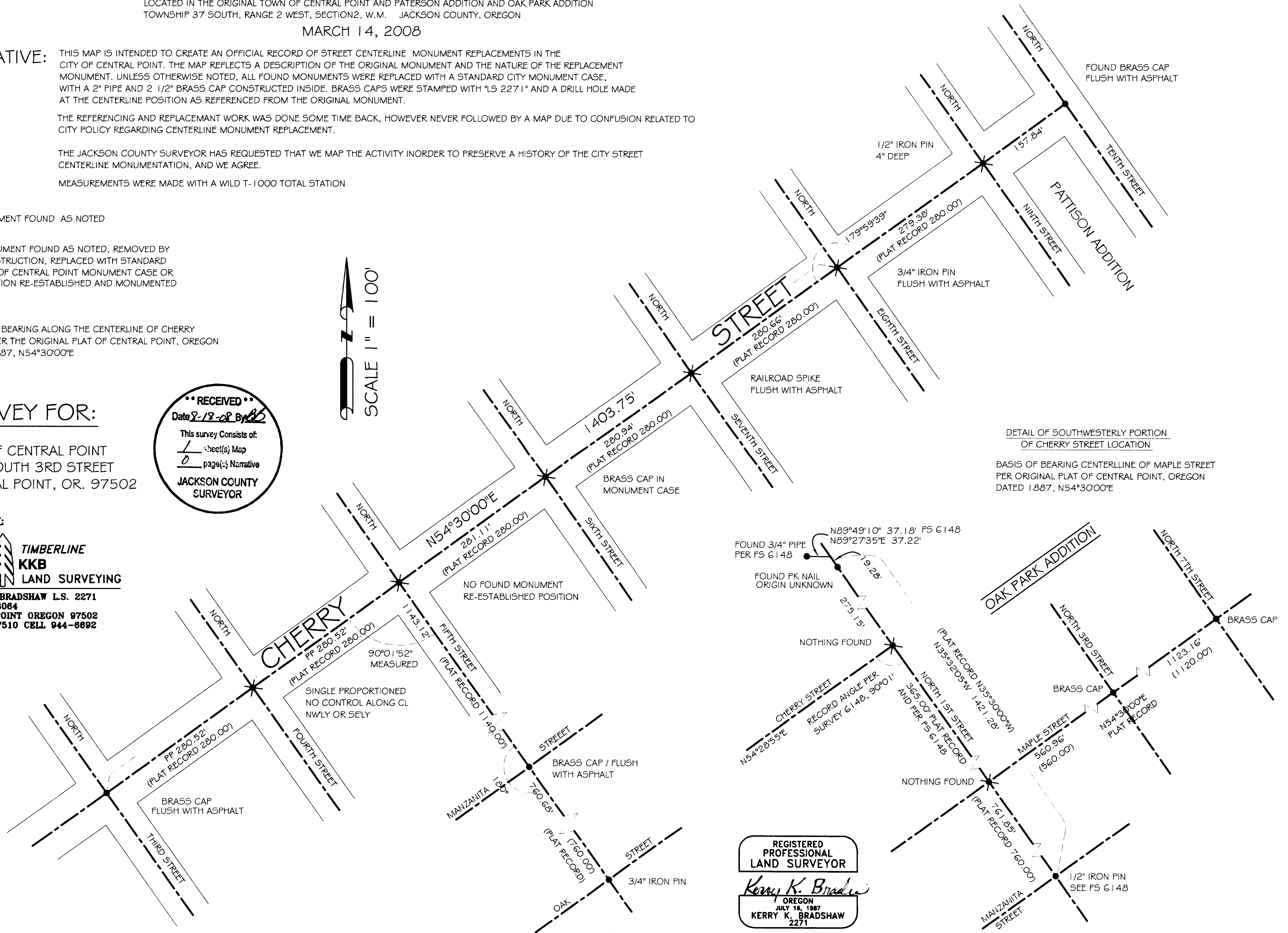
CITY OF CENTRAL POINT
140 SOUTH 3RD STREET
CENTRAL POINT, OR. 97502



SURVEY BY:

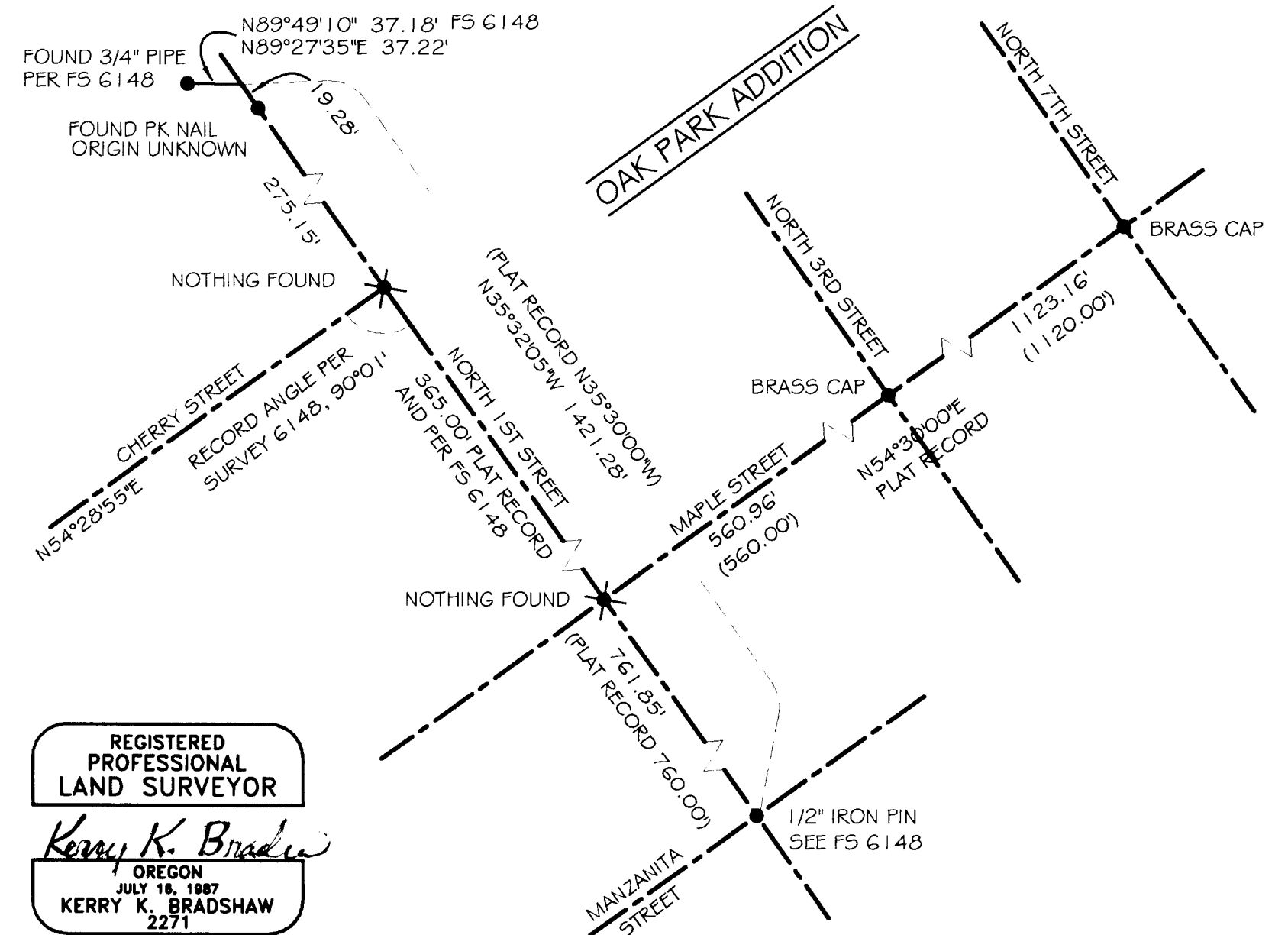
**TIMBERLINE
KKB
LAND SURVEYING**
KERRY K. BRADSHAW L.S. 2271
P.O. BOX 3064
CENTRAL POINT OREGON 97502
(541)664-7510 CELL 944-6692

SCALE 1" = 100'



DETAIL OF SOUTHWESTERLY PORTION OF CHERRY STREET LOCATION

BASIS OF BEARING CENTERLINE OF MAPLE STREET PER ORIGINAL PLAT OF CENTRAL POINT, OREGON DATED 1887, N54°30'00"E



REGISTERED PROFESSIONAL LAND SURVEYOR
Kerry K. Bradshaw
OREGON
JULY 16, 1987
KERRY K. BRADSHAW
2271
EXP. 12-31-09