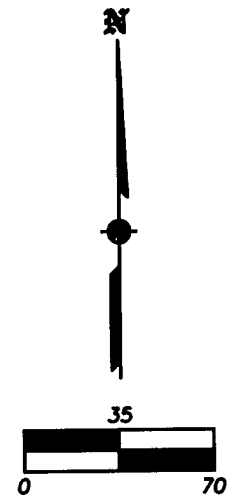


○ = SET 5/8" X 24" IRON PIN & PLASTIC CAP MKD. L.J. FRIAR & ASSOC.
 X = SET BRASS TAG MKD. L.J. FRIAR & ASSOC IN LEAD PLUG IN CONC.
 1WC = 1.00' WITNESS CORNER MONUMENT.
 1.5WC = 1.50' WITNESS CORNER MONUMENT.



REGISTERED PROFESSIONAL LAND SURVEYOR
James E. Hibbs
 OREGON
 JULY 17, 1986
 JAMES E. HIBBS
 2234
 RENEWAL DATE 6-30-09

TITLE: POST-MONUMENTATION EXHIBIT "B"
 SUBDIVISION NAME: RIVER WALK SUBDIVISION
 FOR: NOMOCO, LLC
 P.O. BOX 699
 ASHLAND, OR 97520

DATE: 8 JULY 2008
 SCALE: 1 inch : 70 feet
 DRAWN BY: JEH
 CHK BY:
 ORIGIN:
 ROTATION: 0
 JOB#: 01306FM
 Sheet 1 of 1.

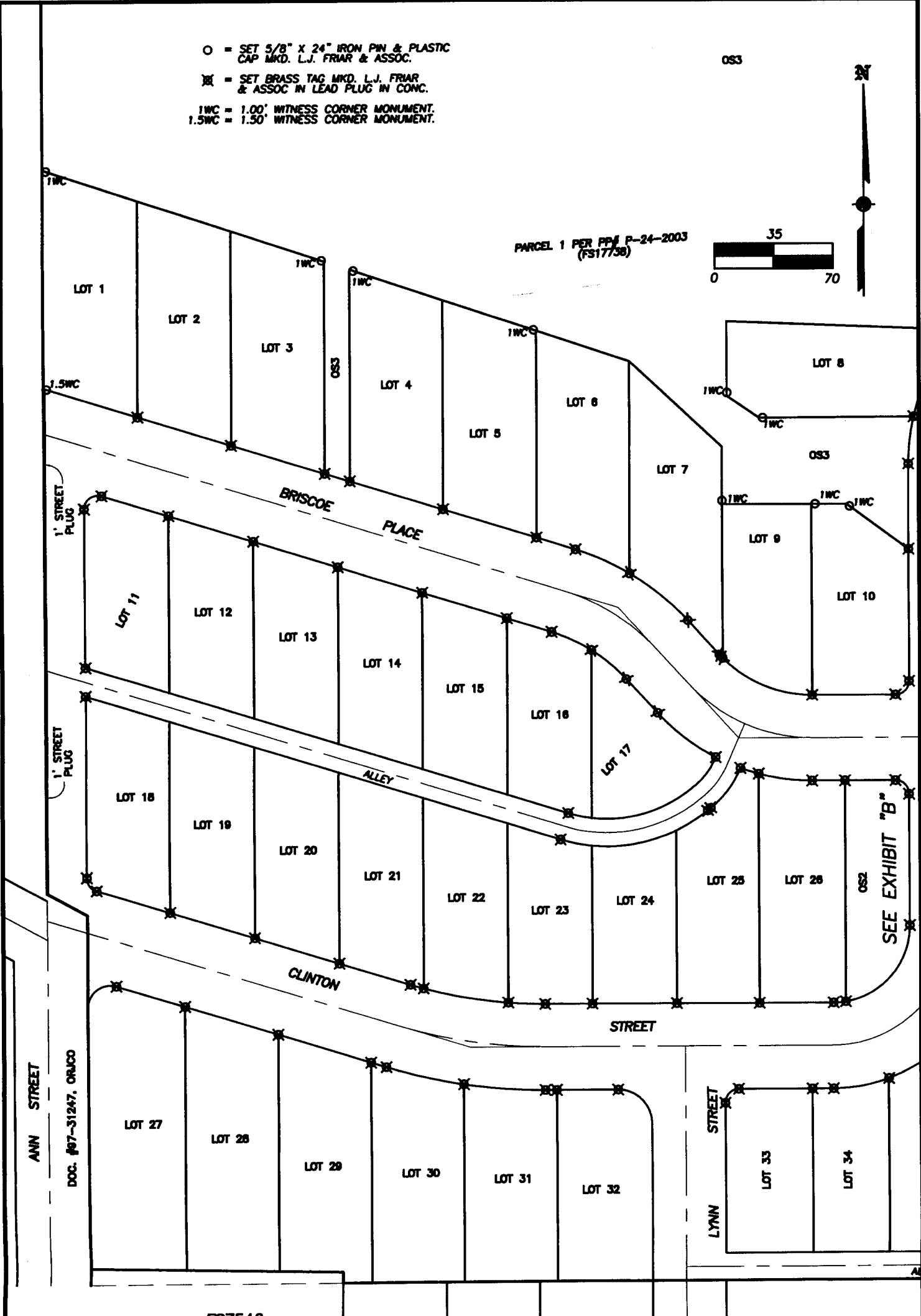
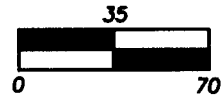
 L.J. FRIAR & ASSOCIATES P.C.
 CONSULTING LAND SURVEYORS
 816 W. 8th St. Medford, OR 97501
 (541) 772-2782 lfriar@charter.net
 www.friarandassociates.com

- = SET 5/8" X 24" IRON PIN & PLASTIC CAP MKD. L.J. FRIAR & ASSOC.
- ✕ = SET BRASS TAG MKD. L.J. FRIAR & ASSOC IN LEAD PLUG IN CONC.
- 1WC = 1.00' WITNESS CORNER MONUMENT.
- 1.5WC = 1.50' WITNESS CORNER MONUMENT.

OS3

34

PARCEL 1 PER PPM P-24-2003 (FS17738)



SEE EXHIBIT "B"

ANN STREET
DOC. #97-31247, ORJCO

LYNN STREET

ES7546

REGISTERED PROFESSIONAL LAND SURVEYOR

James E. Hibbs

OREGON
JULY 17, 1986
JAMES E. HIBBS
2234

RENEWAL DATE 6-30-09

TITLE: **POST-MONUMENTATION EXHIBIT "A"**

SUBDIVISION NAME: **RIVER WALK SUBDIVISION**

FOR: **NOMOCO, LLC**
P.O. BOX 699
ASHLAND, OR 97520

DATE: 8 JULY 2008

SCALE: 1 inch : 70 feet

DRAWN BY: JEH
CHK BY:

ORIGIN:

ROTATION: 0
JOB#: 01306FM

Sheet 1 of 1.

L.J. FRIAR & ASSOCIATES P.C.
CONSULTING LAND SURVEYORS

816 W. 8th St., Medford, OR 97501
(541) 772-2782
ljfriar@charter.net
www.friarandassociates.com