

Survey For  
 AC. LEIGHTON  
 Located in D.L.C. No. 48, Sec. 5,  
 T. 37 S., R. 2 W., W.M.  
 By: Mark E. Boyden  
 August, 1962

2012

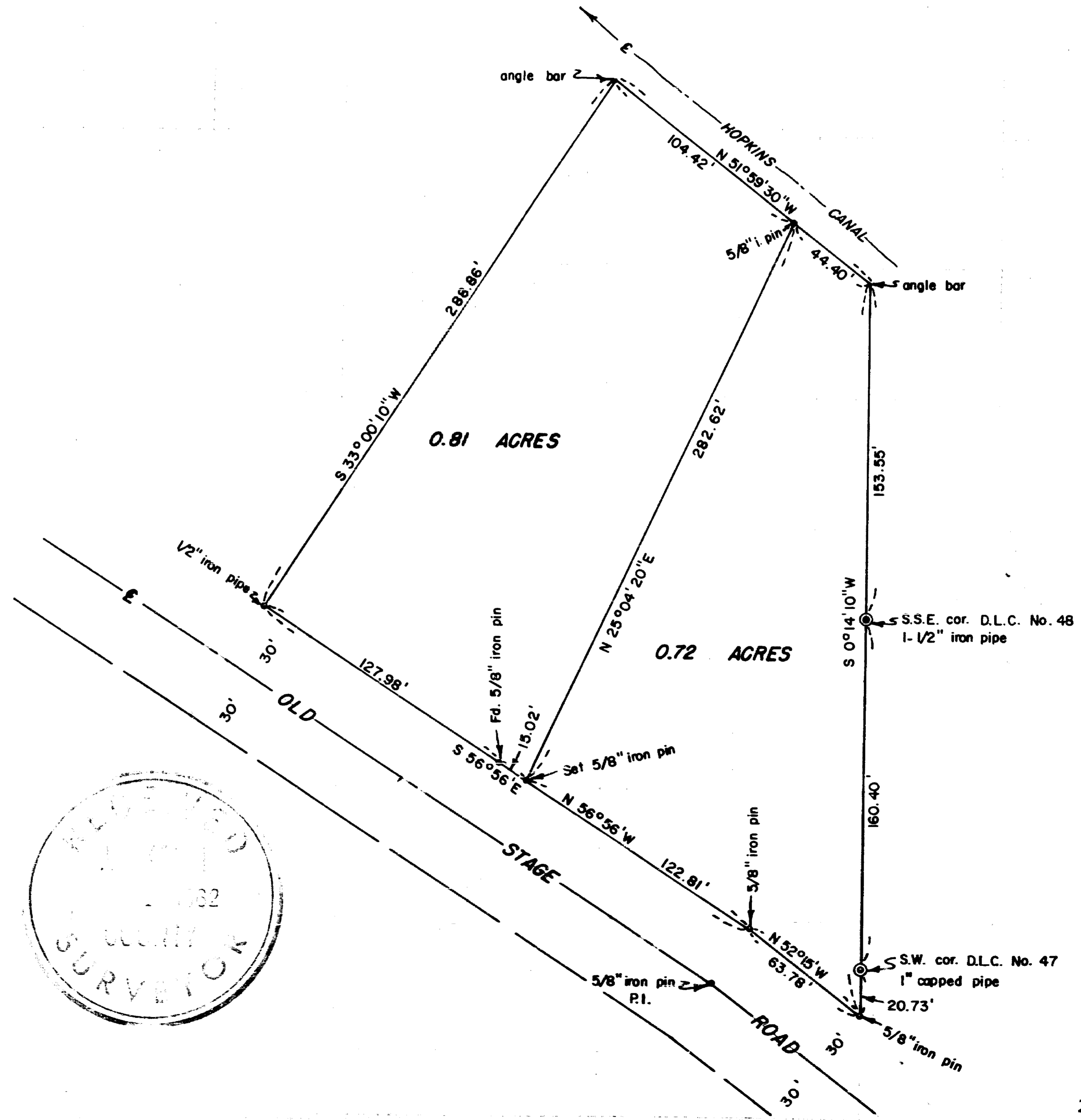


SCALE: 1" = 60'  
 REGISTERED  
**OREGON**  
 LAND SURVEYOR

*Mark E. Boyden*  
 NOVEMBER 9, 1951  
 MARK E. BOYDEN  
 281

NOTE: See Recorded Survey No. 1743

2012



2012

Survey No. 2012

SURVEY NARRATIVE TO COMPLY WITH O.R.S. 209.250

FOR: A. C. Leighton  
Old Stage Road  
Medford, Oregon

LOCATION: DLC #48, Section 5, T37SR2W, WM..

PURPOSE: To re-locate and monument the division line of the Leighton property previously established on Recorded Survey No. 1743, and to prepare a new description for the two tracts.

PROCEDURE:

Found the previously set iron pin at the South end of the division line, and set a new corner monument South  $56^{\circ} 56'$  East, 15.02 feet. No change was made at the North end of the division line.

August 1962

