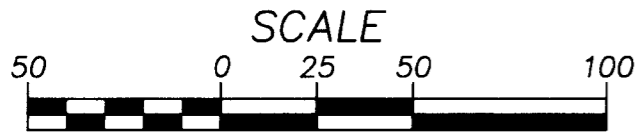


RECORD OF SURVEY

A PARCEL OF LAND LOCATED IN THE NORTHWEST ONE-QUARTER OF SECTION 19, TOWNSHIP 37 SOUTH, RANGE 1 WEST, WILLAMETTE MERIDIAN, JACKSON COUNTY, OREGON
JULY 2008



LEGEND

- ⊙ D.L.C. CORNER AS NOTED
- FOUND MONUMENT AS NOTED
- FOUND MONUMENT AS NOTED PER THE FOURTH RE-ESTABLISHMENT RECORDS OF THE N.N.E. CORNER OF D.L.C. NO. 42
- △ FOUND MONUMENT AS NOTED PER THE SECOND RE-ESTABLISHMENT RECORDS OF THE S.E. CORNER OF D.L.C. NO. 40

- SET 5/8" X 30" IRON ROD W/YPC MARKED W&H PACIFIC.
- (1) RECORD DATA PER C.S. 5916
- (2) RECORD DATA PER THE FOURTH RE-ESTABLISHMENT RECORDS OF THE N.N.E. CORNER OF D.L.C. NO. 42
- (3) RECORD DATA PER THE SECOND RE-ESTABLISHMENT RECORDS OF THE S.E. CORNER OF D.L.C. NO. 40
- (4) RECORD DATA PER C.S. 18064

Y.P.C. YELLOW PLASTIC CAP
I.R. IRON ROD
S/N FILED SURVEY NUMBER
SURVEYED FOR

REFERENCE SURVEYS

S/N 18064
S/N 5916

DATE SURVEYED

JUNE, 2008

NARRATIVE

THE PURPOSE OF THIS SURVEY IS TO MONUMENT THE BOUNDARIES OF PARCEL 1 OF EXHIBIT "A" RECORDED IN INSTRUMENT NO. 77-15222, DEED RECORDS OF JACKSON COUNTY, OREGON

THE BASIS OF BEARINGS IS BETWEEN THE N.N.E. CORNER OF D.L.C. NO. 42 AND THE S.E. COR. OF D.L.C. NO. 40 PER C.S. 5916, JACKSON COUNTY SURVEY RECORDS.

REFERENCE MONUMENTS WERE FOUND AND TIED PER THE FOURTH RE-ESTABLISHMENT OF THE N.N.E. CORNER OF D.L.C. NO. 42 AND THE SECOND RE-ESTABLISHMENT OF THE S.E. CORNER OF D.L.C. NO. 40. THE D.L.C. CORNERS WERE ESTABLISHED ELECTRONICALLY BASED ON RECORD INFORMATION. THE CENTERLINE OF EAST McANDREWS ROAD WAS ESTABLISHED ALONG A LINE BETWEEN THESE D.L.C. CORNERS. REMAINING CORNERS ON THE EXTERIOR BOUNDARY WERE ESTABLISHED FROM FOUND AND HELD MONUMENTATION AND FROM RECORD DEED INFORMATION.

FIELDWORK WAS COMPLETED WITH A LEICA 1201 TOTAL STATION AND LEICA ACCESSORIES.

EAST McANDREWS ROAD

BIDDLE ROAD

BASIS OF BEARINGS

S89°49'50"E (1) 3890.71' (1)
3890.82'

S.E. CORNER D.L.C. NO. 40
ESTABLISHED PER SECOND
RE-ESTABLISHMENT RECORDS
(HELD)

SEE DETAIL "A"

N.N.E. CORNER D.L.C. NO. 42
ESTABLISHED PER FOURTH
RE-ESTABLISHMENT RECORDS
(HELD)

****RECEIVED****

Date 8-1-08 By JB

This survey Consists of:
1 sheet(s) Map
2 page(s) Narrative

JACKSON COUNTY
SURVEYOR

5/8" I.R. W/Y.P.C. MARKED
"D.McMAHAN LS 1913" PER S/N. 18064
S70°10'53"E, 0.32' FROM CORNER

FOUND 5/8" I.R.
PER S/N 18064
NO CAP
(HELD)

5/8" I.R. W/Y.P.C.
MARKED "D.McMAHAN LS
1913" PER S/N 18064
(HELD)

PARCEL 1

AREA
33,102 S.F.
OR
0.76 ACRES

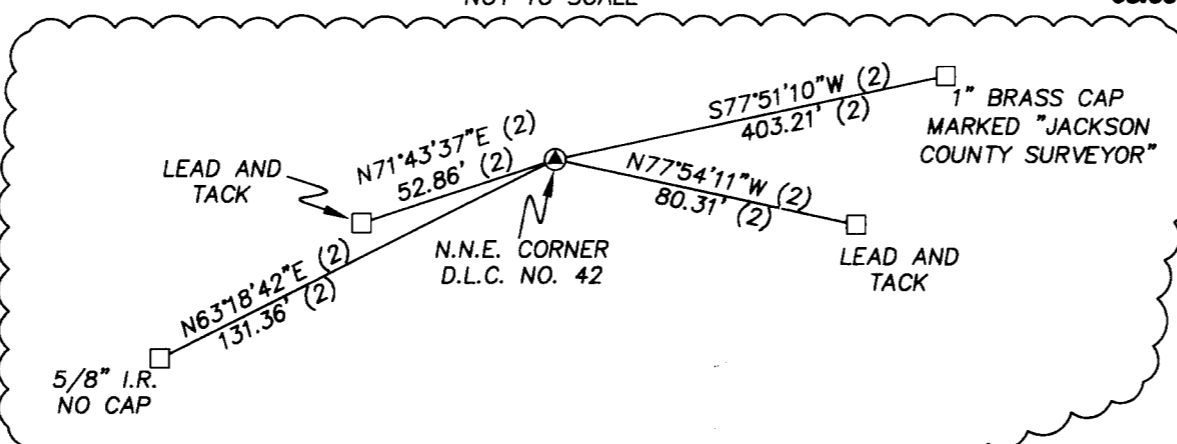
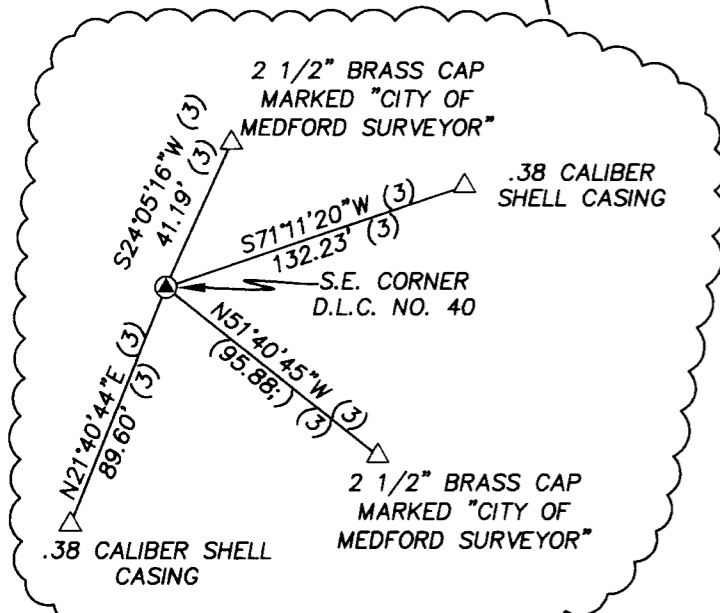
PARCEL 2

McDONALD'S
BUILDING



DETAIL "A"
NOT TO SCALE

DETAIL "B"
NOT TO SCALE



ASSESSOR'S MAP NO.

37 1W 19CB TAX LOT NO. 400 (400A2)

REGISTERED
PROFESSIONAL
LAND SURVEYOR

OREGON
JULY 21, 1992
JACK A. BUTLER
2550
RENEWAL: 12-31-09

WHPacific

1004 Main Street
Klamath Falls, OR 97601
541-884-3042 Fax 541-885-2105
www.whpacific.com