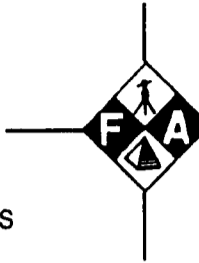




I, Christine Walker, County Clerk for Jackson County, Oregon, certify that the instrument identified herein was recorded in the Clerk records.
Christine Walker - County Clerk

TELEPHONE
541-772-2782



L. J. FRIAR AND ASSOCIATES, P. C.
CONSULTING LAND SURVEYORS

FAX **20097**
541-772-8465

JAMES E HIBBS, PLS

816 WEST 8TH STREET
MEDFORD, OREGON 97501

ljfriar@charter.net

AFFIDAVIT OF MONUMENTATION FOR DEFERRED MONUMENTS
Pursuant to O.R.S. 92.070

KNOW ALL MEN BY THESE PRESENTS, that I, James E. Hibbs, Registered Professional Land Surveyor of Oregon No. 2234, do hereby affirm that I have established with the proper monuments, the Street monuments and Subdivision corners shown as deferred on the Official Plat of **BUDS DAIRY, A PLANNED COMMUNITY**, and filed as Survey No. 18308 in the Jackson County Surveyor's Office. The locations and types of deferred monuments that differ from the plat are as shown on the attached "Post Monumentation Exhibit A for Bud's Dairy".

REGISTERED
PROFESSIONAL
LAND SURVEYOR

James E. Hibbs
OREGON
JULY 17, 1986
JAMES E. HIBBS
2234

RENEWAL DATE 6-30-09

STATE OF OREGON)
)ss
COUNTY OF JACKSON)

Signed before me this 30th day of May, 2008.
By James E. Hibbs.

Karen L. Lafitte
Notary Public of Oregon

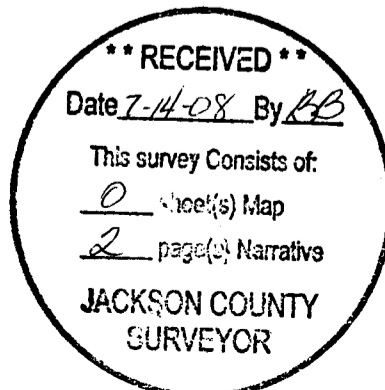


Approved: *Jan Hall*
Ashland City Surveyor

6/6/08
Date

Examined and approved this 30th day of May, 2008.

Roger Roberts
Jackson County Surveyor



POST-MONUMENTATION EXHIBIT "A" FOR BUD'S DAIRY

5WC = SET 5' WITNESS CORNER MONUMENT.
 2.14RM = SET 2.14' REFERENCE MONUMENT ON SOUTHERLY PROLONGATION OF LOT LINE.

Ø = SET 5/8" X 30" IRON PIN & PLASTIC CAP MKD. L.J. FRIAR & ASSOC.
 30WC = SET 30' WITNESS CORNER MONUMENT.

⊗ = SET BRASS TAG MKD. L.J. FRIAR & ASSOC IN LEAD PLUG IN CONCRETE.
 1WC = SET 1' WITNESS CORNER MONUMENT.

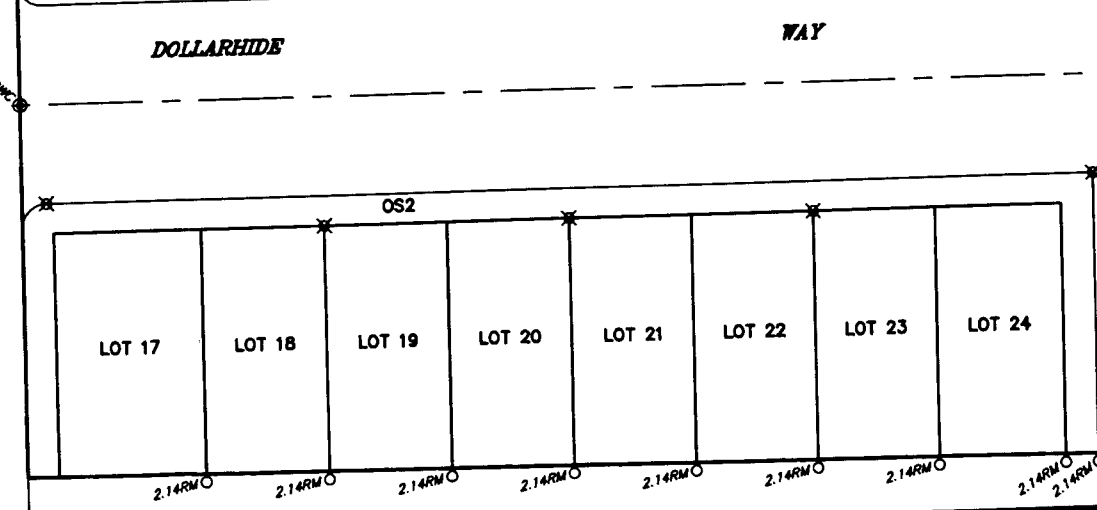
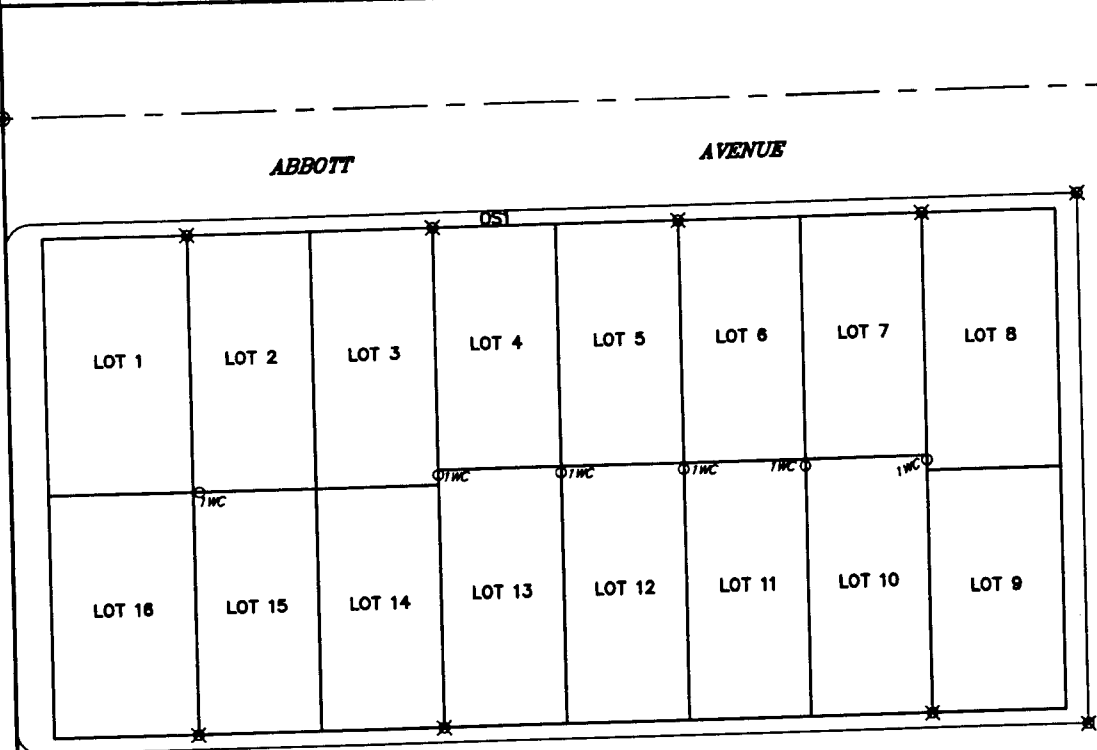
ORJCO
DOC. 1

STREET

CLAY

30

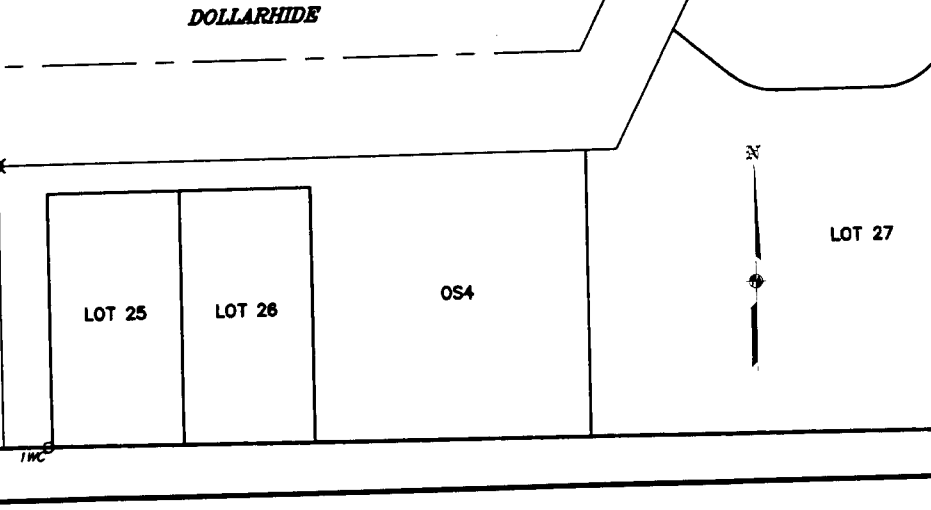
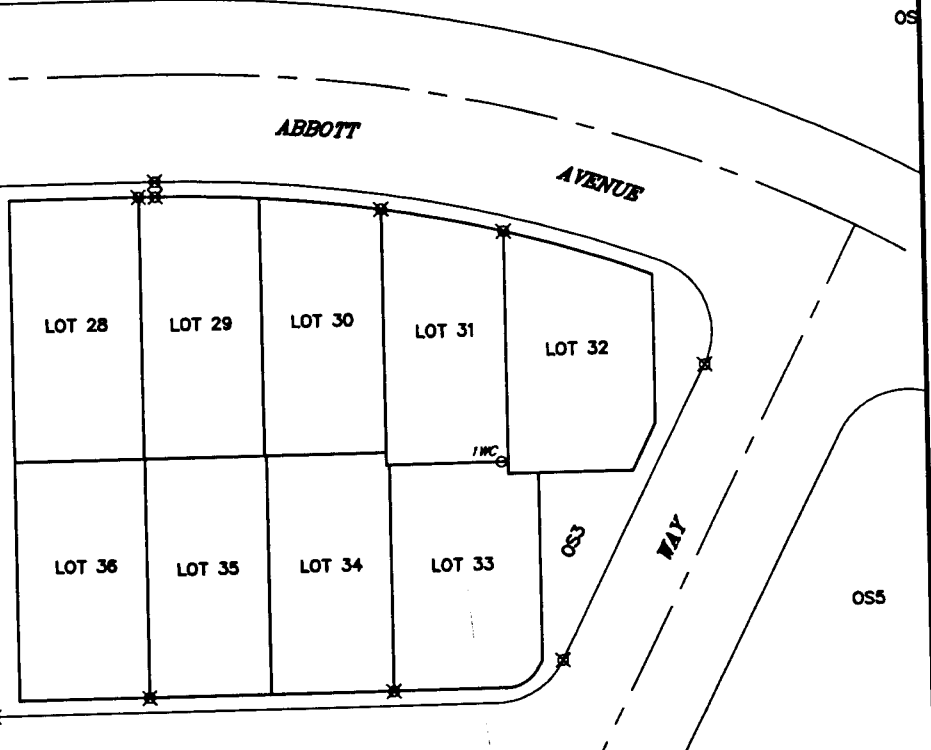
30



STREET

ANGLE

5WC



LOT 27

OS5

