

Legend

- ⊙ = SET 5/8" X 30" IRON REBAR WITH ORANGE PLASTIC CAP STAMPED "HARDEY ENG. & ASSOC."
- = Fd. 5/8" IRON PIN PER FS 2188
- = Fd. 5/8" REBAR & YELLOW PLASTIC CAP PER FS 17743
- () = RECORD DATA PER DEED AND FS 2188
- FS = FILED SURVEY NO.

Narrative

Purpose: To survey, monument, and describe four adjusted tax lots in order to complete a property line adjustment as approved by Jackson County File SUB2007-00039_PLA

Procedure: A review of the three deed descriptions (TL 110 and 111 = Doc. No. 01-53226 O.R., TL 112 = Doc. No. 98-11734 O.R.) found them to be in harmony with the mathematics and original monuments reflected in FS 2188. I established the west property lines of said tax lots by holding the found quarter corners as shown to establish the north-south center of section line called for in the deeds. The monument at the northwest corner of TL 110 was found to be 0.12' east of the center of section line and undisturbed (protected by large rocks) and in good condition approximately 2.2' west of a fence corner. I used this original monument along with another on the east right of way line of Alpine Road (due to the absence of an original monument at the northeast corner of TL 110) to establish the north property line of TL 110. My solution disagrees with FS 17743 in this regard as said survey maintains that the original monument at the northwest corner of TL 110 has been disturbed by fence construction and utilizes a record position and bearing instead which places the north line of TL 110 approx. 0.3' north of my solution. FS 2188 shows the original monument on the east side of Alpine Road to be on an extension of the north line of TL 110 and since I found it to be undisturbed and in good condition I used it to control the east end of said north line.

The west line of said tax lots (west right of way line of Alpine Road) was established using found monuments on the east right of way line of Alpine Road and offsetting the resulting line for the required 60' right of way. This places the original monuments at the southwest corners of TL 111 and 112 inside the right of way as shown. This solution fits very well with the physical location of Alpine Road and is in better harmony with the mathematics of FS 2188. The south and north lines of TL 112 were established using found monuments as shown. The north line of TL 111 was established using the found monument as shown and holding the record bearing of the line and intersecting it with the west right of way of Alpine Road.

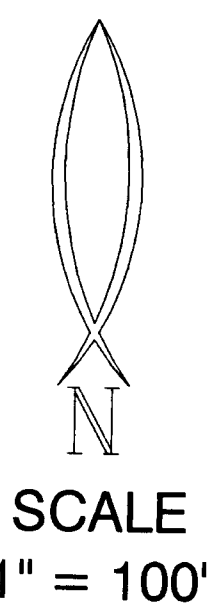
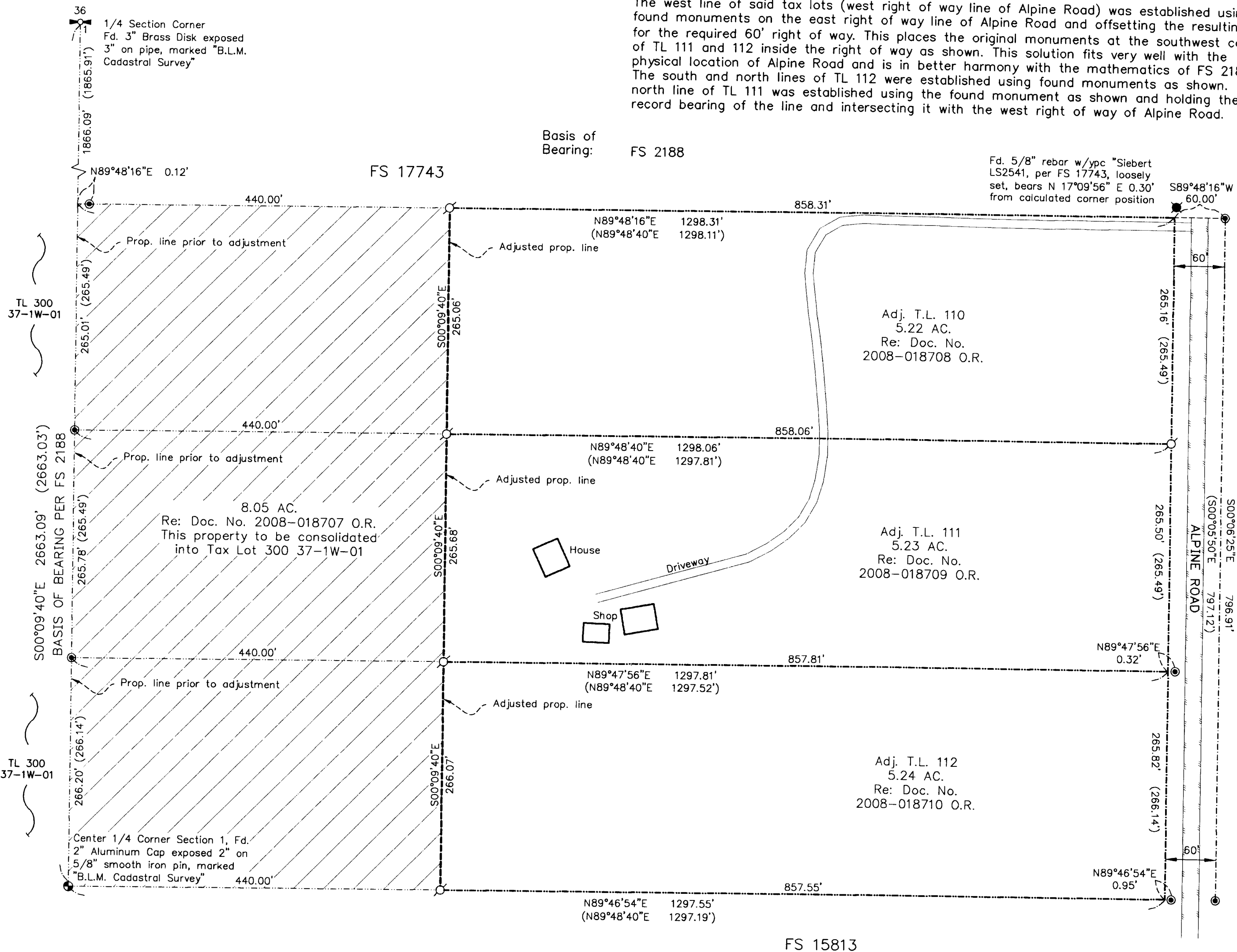
MAP of SURVEY
PROPERTY LINE ADJUSTMENT

LOCATED IN:
NE 1/4 Section 1, T37S, R1W W.M.
Jackson County, Oregon
December, 2007

Approval File No, SUB 2007-00039_PLA

Examined and approved by Jackson County Development Services
this 28 day of MAY, 2008.

Charles Bennett
County Planner



** RECEIVED **
 DATE 5-30-08 BY *KS*
 This survey consists of:
 1 sheet(s) Map
 0 page(s) Narrative
 JACKSON COUNTY
 SURVEYOR

Survey For:
 Dry Creek Landfill
 6260 Dry Creek Rd.
 Eagle Point, OR 97524
 attn: Lee Fortier

Survey By:
 Hardey Engineering & Assoc., Inc.
 By: Otto Ribanszky, L.S. 72476
 P.O. Box 1625
 Medford, OR 97501-0124

REGISTERED
 PROFESSIONAL
 LAND SURVEYOR
Otto Ribanszky
 OREGON
 July 15, 2003
 OTTO RIBANSZKY
 No. 72476
 RENEWS 12/31/08

Hardey Engineering & Associates, Inc.

P.O. BOX 1625
 MEDFORD, OREGON 97501-0063
 VOICE: 541-772-6880
 FAX: 541-772-9573
 EMAIL: info@hea-inc.com