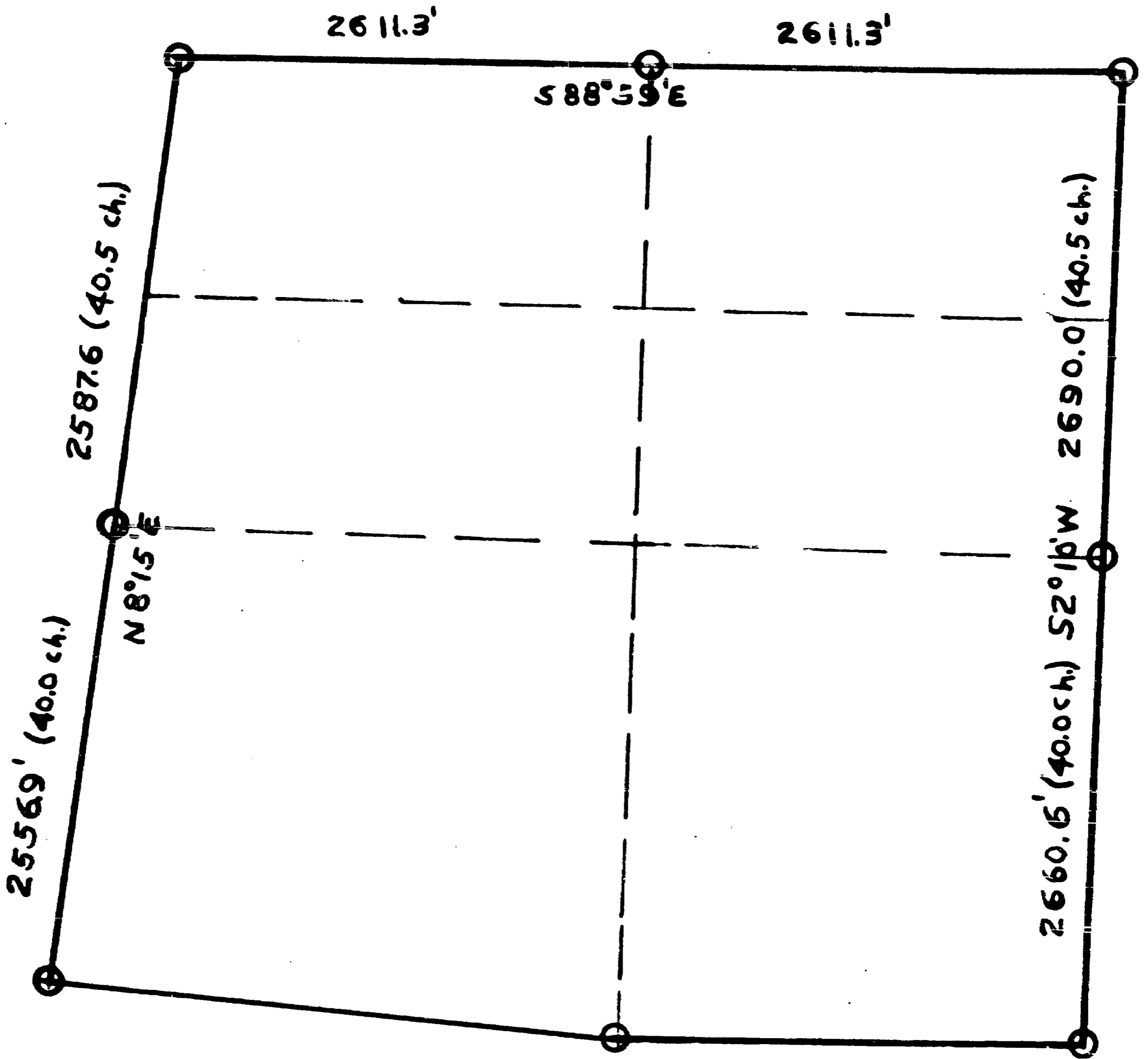


Section 5, T34S, R2E, W.M.

2004



Scale: 1" = 1000'



REGISTERED
OREGON
 LAND SURVEYOR

D. A. Smeltzer

OCTOBER 24, 1958
 DUANE A. SMELTZER
461

2004

Field Notes; Transit and chain survey. Section 5, T34S, R2E, W.1.

Commenced survey to establish West, North and East lines and 1/4 corners, 11-29-61 and finished on 7-6-62.

West line:

Random line began at S.W. corner; Original 30" Madrone N40°E 85 lks.
BT's 30" B. Oak N43°W 95 "
Set; 1 1/2" X4' pipe 6/5
7/8

ran to N.W. corner; Stone 5 notches on East, 1 on West, X on top.
CSBT's; 9" cedar N23°E 13.2ft.
10" D. Fir N60°W 41.2 "
28" Cedar S36°W 30.0 "
5" Dogwood S25 1/2°E 32.0 "

True line bearing (by Sun shots) N8°15'E
0.0 feet Began descent to small draw.
1100.0 " small draw; begin ascent.
1300.0 " nearly flat ground.
2556.9 " set 1/4 corner; 1 1/2" X4' pipe. Scribed RS 461 BT
2580.0 " log road. 6/5 20" D. Fir S80°W 22.5'.
3100.0 " slight descent. 22" " S21°E 22.0'.
3250.0 " small draw, ascend.
3500.0 " flat ground, descend slightly to;
5144.5 " N.W. Section corner stone, CSBT's.

North line :

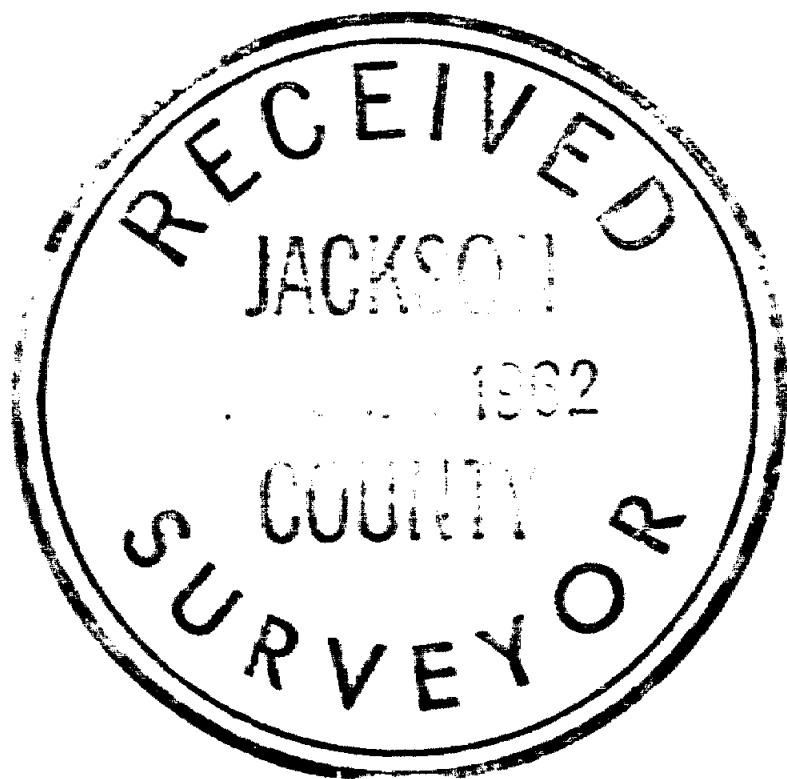
Random line began at N.W. corner, ran East to N.E. corner

True line bearing (by Sun shots) S80°59'E.
0000.0 feet Began descent.
640.0 " small creek E-W, ascend hill.
1300.0 " ridge top, descend.
2496.0 " Lost Creek, NW-SE, ascend slope.
2611.3 " set 1/4 corner; 1 1/2" X4' pipe. Scribed RS 461 BT
5222.6 " N.E. corner stone; (original) Scribed RS 461 BT
16" x 12" x 12" 14" Madrone S3°W 19.6'
4 hacks on South. 20" " S64°E 4.7'
8" " N37°E 3.5'
5" W. Fir N25°W 15.6'

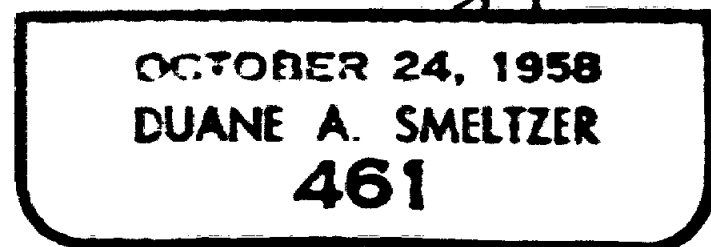
East line:

Random line began at N.E. corner, ran South to S.E. corner.

True line bearing (by Sun shot) S2°10'W.
0.0 feet Nearly level.
106.7 " begin slight descent.
963.2 " " sharp descent to Lost Creek.
1565.0 " Lost Creek, E-W, begin ascent.
1850.0 " log road, line runs more or less up N-S draw.
2690.0 " set 1/4 corner; 1 1/2" X4' pipe. Scribed RS 461 BT
5/4 10" Hemlock N11°E 16.1'
12" " N55°W 10.6'
3350.0 " flat ridge top, start easy descent.
5350.6 " S.E. corner; 2 original BT's, 10" Fir N25°E 22 lks.
set 1 1/2" X4' pipe 5/4 12" " S30°E 12 "
3/5



D. A. Smeltzer



Butte Falls, Oregon
August 7, 1962

County Surveyor
Jackson County Court House
Medford, Oregon

Dear Sir;

Please record the following information pertaining to the surveys of the United States Public Lands.

I, Duane A. Smeltzer on or about 2-28-61 diligently tried to retrace the West, North and East lines of Section 5, T343, R2E, W.M. The three $\frac{1}{4}$ corners and BT's are gone. Original line blazes on the West line are scarce and the old blazes when followed North from where the $\frac{1}{4}$ corner should be do not lead to the N.W. corner but about 250 feet to the West.

Judging from this evidence a true line from S.W. to N.W. corners, proportioning in the $\frac{1}{4}$ corner, was run.

Blazes could not be followed along the North line. A true line was run from N.W. to N.E. corners and the $\frac{1}{4}$ corner established.

Original blazes were scarce along the East line with scattered conflicting newer blazes. The $\frac{1}{4}$ corner was proportioned in on a true line between the N.E. and S.E. corners.

