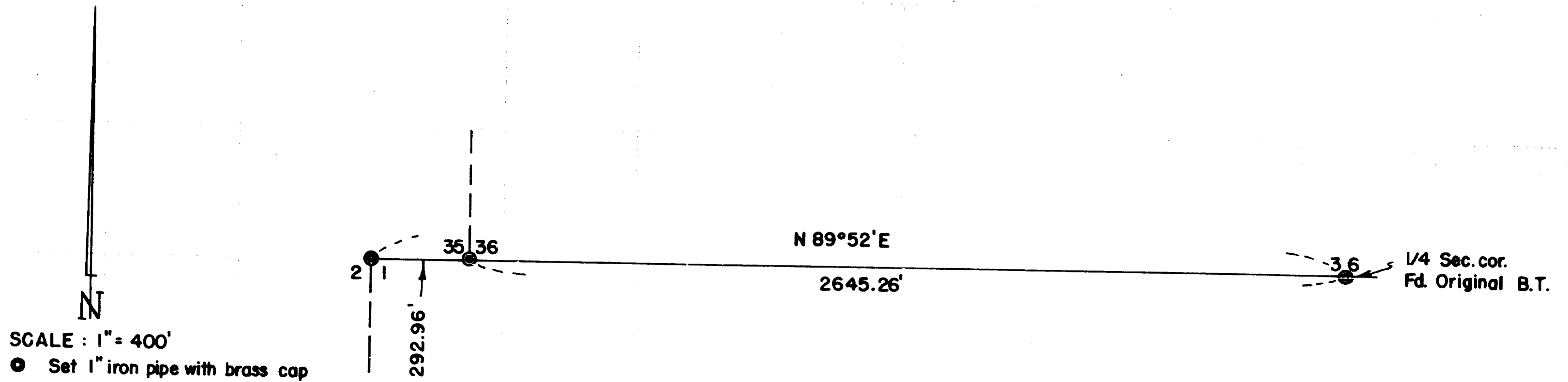


Survey For  
TRAIL CREEK LUMBER CO.  
Located in Secs. 35 & 36, T. 32 S., R. 2 W., W.M.  
and Secs. 1 & 2, T. 33 S., R. 2 W., W.M.  
By: MARK E. BOYDEN  
July, 1961 - August, 1962

1899



REGISTERED  
OREGON  
LAND SURVEYOR

*Mark E. Boyden*  
NOVEMBER 9, 1951  
MARK E. BOYDEN  
281

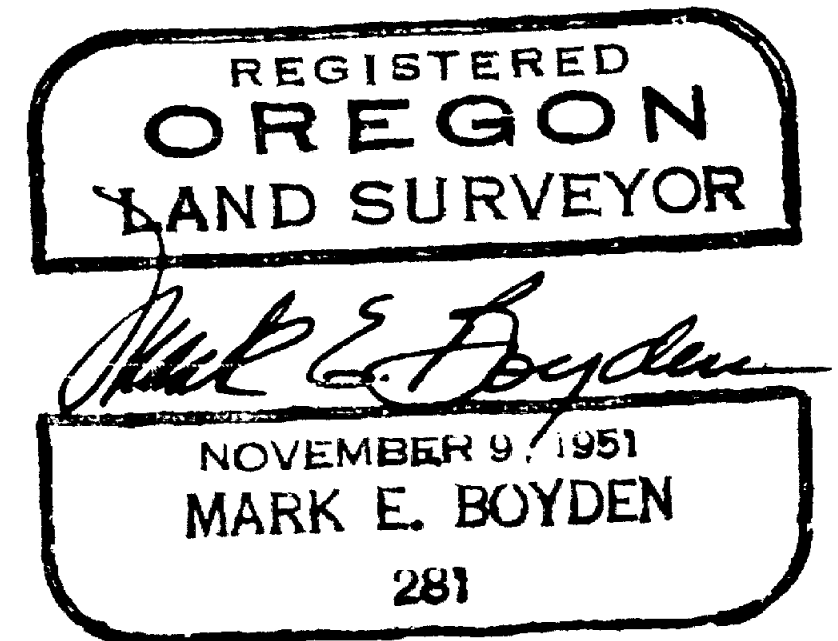
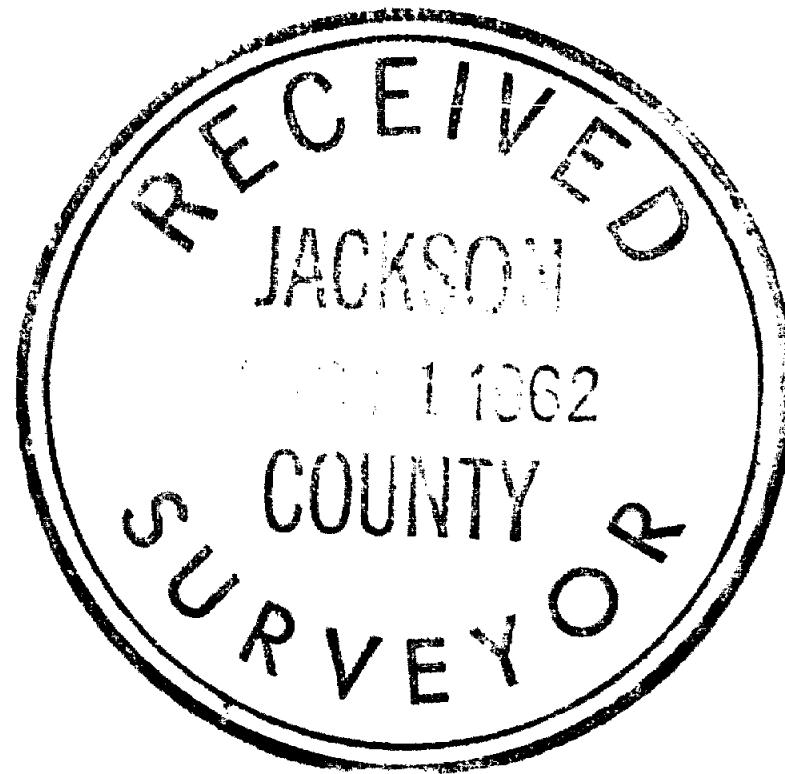
RECEIVED  
JACKSON  
1962  
COUNTY  
SURVEYOR

1993

A 7" Fir, scribed "CS-BT" bears South 45 1/2° West,  
9.8 feet to the face of the blaze.

The bearings hereon shown are based on a solar observation  
taken approximately 1000 feet West of the South Quarter corner  
of Section 36.

August 14, 1962



A 6" D. Fir, scribed "CS-BT" bears South  $4\frac{1}{2}^{\circ}$  West, 13.4 feet to the face of the blaze;

An 8" D. Fir, scribed "CS-BT" bears South  $4\frac{3}{4}^{\circ}$  East, 22.6 feet to the face of the blaze;

A 28" D. Fir, scribed "CS-BT" bears North  $87\frac{1}{2}^{\circ}$  East, 21.7 feet to the face of the blaze.

On line, and at a proportional distance between the closing corner common to Sections 1 and 2 and the South Quarter corner of Section 36, set a 1" x 36" galvanized iron pipe for corner common to Sections 35 and 36, with bronze cap stamped:

"T32SR2W

35 | 36 C.S.

1962"

28" in the ground, from which:

An 18" Y. Pine, scribed "CS-BT" bears North  $79\frac{1}{2}^{\circ}$  East, 31.2 feet to the face of the blaze;

A 12" Y. Pine, scribed "CS-BT" bears North  $2^{\circ}$  West, 50.0 feet to the face of the lower blaze.

This corner to Sections 35 and 36 could technically be considered a closing corner, but it was felt that due to the obliteration of corners to the West, that this method of establishment would more nearly fit the original corner position.

At the South Quarter corner of Section 36, set a 1" x 36" galvanized iron pipe with bronze cap stamped:

"T32SR2W

36 C.S.  
1/4 cor.

1961"

28" in the ground, from which:

The original witness tree (now a 60" Y. Pine stump with scribed chips marked "1/4 S" and "BT") bears North  $45^{\circ}$  West, 56.1 feet;

A 9" Fir, scribed "CS-BT" bears North  $58\frac{1}{2}^{\circ}$  West, 12.9 feet to the face of the lower blaze;

The growth ring count on trees blazed to the South indicated more than 70 years of growth.

Then an additional search was made for the corner common to Sections 35 and 36, but no definite evidence could be found for this corner.

Our traverse was then continued Westerly along the National Forest Service blazed line to the vicinity of the closing corner common to Sections 2 and 3, but none of the original witness trees for any of the intervening corners could be found.

A letter was sent to the Cadastral Engineer's Office in Portland, Oregon, requesting any information they might have in their files regarding this pine witness tree. Their reply indicated that their notes were identical to ours, namely that corner common to Sections 1 and 2 was witnessed with 2 matherone trees and a black oak tree, and that they had no information regarding the pine witness tree.

After carefully considering this problem, we concluded that the pine was unquestionably scribed by Moore in 1884, and that the record in the official notes may not apply to this corner location.

Because of the obliteration of the corners to the West, we establish this corner at the intersection of the blazed lines as heretofore described and set a 1" x 36" galvanized iron pipe with bronze cap stamped:

"T33SR2W  
 CC.  $\overline{\quad}$  CS  
     2 | 1  
     1962"

30" in the ground for the closing corner common to Sections 1 and 2 from which:

A 14" Y. Pine, scribed "S2-T33SR2W-BT" with 78 growth rings over the face, bears South 5 1/2° West, 52.6 feet to the face of the blaze;

## SURVEY NARRATIVE TO COMPLY WITH O.R.S. 209.250

FOR: Trail Creek Lumber Co.  
White City, Oregon

LOCATION: Sections 35 and 36, T32SR2W and Sections 1 and 2,  
T33SR2W.

PURPOSE: To establish the corner common to Sections 35 and 36,  
T32SR2W and the corner common to Sections 1 and 2,  
T33SR2W.

PROCEDURE: Began the survey at the South Quarter corner of  
Section 36, where the stump of the original witness tree, with  
scribed chips were found.

By transit-chain traverse, ran Westerly along the National  
Forest Service blazed line, dating back to approximately 1914,  
to the vicinity of the corner common to Sections 35 and 36.

Finding no evidence of the original witness trees standing,  
we proceeded Westerly to the vicinity of the closing corner  
common to Sections 1 and 2.

Near the closing corner common to Sections 1 and 2, we  
find a scribed Y. Pine in Section 2, scribed "S 2, T33SR2W-BT"  
with a mean average of 78 growth rings over the old face. A  
diligent search was made for additional witness trees and the  
stone corner monument reportedly set by R. S. Moore in 1884,  
but no additional evidence for this corner could be found.

At the corner common to Sections 1, 2, 11, and 12 also  
set by R. S. Moore in 1884, we found one of the original witness  
trees plainly scribed, with the number "2" marked "9". We also  
found the same type of "9" in the said scribed pine in the  
vicinity of the closing corner common to Sections 1 and 2.

A temporary corner was set for the closing corner common  
to Sections 1 and 2 at the intersection of the original blazed  
line running South, and the said National Forest Service blazed  
line running East and West.