

THE N.W. 1/4 OF SEC. 25, T. 36 S., R. 4 W., W.M.

INDEX

LEGEND
- SET NETWORK POINT (triangle)
- SET STRATEGIC POINT (circle)
- TERRESTRIAL OBSERVATION LINE (dashed line)
- GPS OBSERVATION (dotted line)
- OPUS ONLINE POSITIONING USER SERVICE (SEE NARRATIVE - SHEET 1)
- EXISTING BRIDGE (line with hatching)

GPS VECTORS

Table with columns: FROM, TO, ROOT MEAN SQUARE (FT)
10 20 0.0627466
10 60 0.0663273
10 70 0.1790320
10 80 0.0900064
80 20 0.0456853
80 60 0.0964890
80 70 0.2200208

DISTANCE RESIDUALS

Table with columns: FROM, TO, RESIDUAL
10 11 0.0005
10 20 -0.0006
10 30 0.0005
11 10 -0.0010
11 20 -0.0023
20 10 0.0004
20 30 -0.0024
30 10 -0.0015
30 20 0.0020
30 40 -0.0016
30 50 -0.0024
40 30 -0.0026
40 50 0.0018
40 70 0.0004
40 100 0.0001
50 40 -0.0007
50 60 -0.0005
60 50 -0.0018
70 40 0.0019
70 80 0.0009
70 90 -0.0001
80 70 -0.0165
100 40 -0.0075

ANGLE RESIDUALS

Table with columns: B.S., INSTR., F.S., RESIDUAL
10 20 11 -0°00'02.83
10 20 30 -0°00'03.02
10 30 11 0°00'02.10
10 30 20 0°00'03.40
20 10 30 -0°00'00.43
30 20 10 -0°00'03.31
30 20 40 -0°00'02.52
40 30 50 -0°00'02.31
40 30 100 -0°00'05.75
40 50 70 -0°00'00.76
40 50 100 0°00'04.36
50 40 60 0°00'00.44
70 40 80 0°00'00.39
70 40 90 0°00'01.47
70 80 40 -0°00'00.26
70 80 90 -0°00'01.45

B.S.=BACKSIGHT F.S.=FORE SIGHT
INSTR.= INSTRUMENT

INDEX
SHEET 1 NARRATIVE AND CONTROL STATION DESCRIPTIONS NETWORK OBSERVATIONS AND ADJUSTMENTS
SHEET 2 ROW INFORMATION, MONUMENT RECOVERY POSITIONS, AND DESCRIPTIONS

NARRATIVE:

PURPOSE: THIS SURVEY WAS PREPARED TO AUGMENT PREVIOUSLY RECORDED SURVEY NO. 19800 BY INCLUDING THE MONUMENTS AT THE NW CORNER OF SECTION 25 AND THE WEST ONE-QUARTER CORNER OF SECTION 25. SAID SURVEY NO. 19800 HAD BEEN MADE IN PREPARATION FOR BRIDGE REPAIR ALONG I-5 - U.S. HIGHWAY 60, JACKSON COUNTY, OREGON. THESE SURVEYS SERVE TO:
1) ESTABLISH HORIZONTAL AND VERTICAL SURVEY CONTROL;
2) LOCATE AND DOCUMENT THE POSITIONS OF ANY MONUMENTS OF RECORD THAT MAY BE DESTROYED DURING CONSTRUCTION OF THE IMPROVEMENTS;
3) RESOLVE THE EXISTING RIGHT-OF-WAY (R/W);
4) REFERENCE THE SURVEY TO ADJACENT SECTION MONUMENTS.

HORIZONTAL NETWORK ADJUSTMENT
GPS OBSERVATIONS WERE MADE USING TRIMBLE 5700 AND 5800 DUAL FREQUENCY RECEIVERS ON MARCH 27-28 AND APRIL 3-4, 2007. TERRESTRIAL OBSERVATIONS WERE MADE USING A TRIMBLE 5603 ON MARCH 27-29 AND APRIL 4-5, 2007. THE GPS AND TERRESTRIAL OBSERVATIONS WERE SIMULTANEOUSLY ADJUSTED USING STAR*NET LEAST SQUARE ADJUSTMENT SOFTWARE. THE NAD 83 (GRS96) (EPOCH 2002.0000) POSITIONS OF STATION 10 & STATION 80, AS DETERMINED BY AVERAGING THE RESULTS OF 2 GLOBAL POSITIONING SYSTEM OBSERVATION SESSIONS RESOLVED USING THE NATIONAL GEODETIC SURVEY'S (NGS) ON-LINE POSITIONING USER SERVICE (OPUS), WERE HELD AS SHOWN. THE RESULTING ADJUSTMENT RESIDUALS AND COORDINATE VALUES ARE SHOWN ON SHEET 2 OF THIS SURVEY.

HORIZONTAL DATUM
THE HORIZONTAL DATUM IS ON A LOCAL DATUM PLANE (LDP) REFERENCED TO OREGON COORDINATE SYSTEM OF 1983, SOUTH ZONE (STATE PLANE). THE PROJECT COMBINED SCALE FACTOR IS 0.9999314318, COMPUTED FROM THE AVERAGE VALUE FOR ALL CONTROL POINTS OF THIS PROJECT.

VERTICAL CONTROL
ELEVATIONS FOR CONTROL POINTS WERE DETERMINED BY DIFFERENTIAL LEVELS RUN IN A CLOSED CIRCUIT USING A LEICA DNA03 DIGITAL LEVEL ON MARCH 27, 2007. THE UNADJUSTED CLOSURE OF THIS LEVEL LOOP WAS 0.009 FEET. NO ADJUSTMENT OF THE DATA WAS MADE. ELEVATIONS FOR MONUMENTS IN THIS LOOP ARE REFERENCED TO NATIONAL GEODETIC SURVEY (NGS) BENCHMARK Z 549, A 3 1/2" DIAMETER BRASS DISK IN THE SW END OF A CONCRETE CULVERT PASSING UNDER THE RAILROAD TRACKS APPROXIMATELY 70 FEET NORTHEASTERLY OF TWIN BRIDGES ROAD. ELEVATION 1026.30 FEET (312.817 METERS.)

VERTICAL DATUM
THE VERTICAL DATUM IS THE NORTH AMERICAN VERTICAL DATUM OF 1988 (NAVD 88).

BASIS OF BEARING
THE BASIS OF BEARING IS THE OREGON COORDINATE SYSTEM OF 1983, SOUTH ZONE, BASED ON GLOBAL POSITIONING SYSTEM (GPS) OBSERVATIONS.

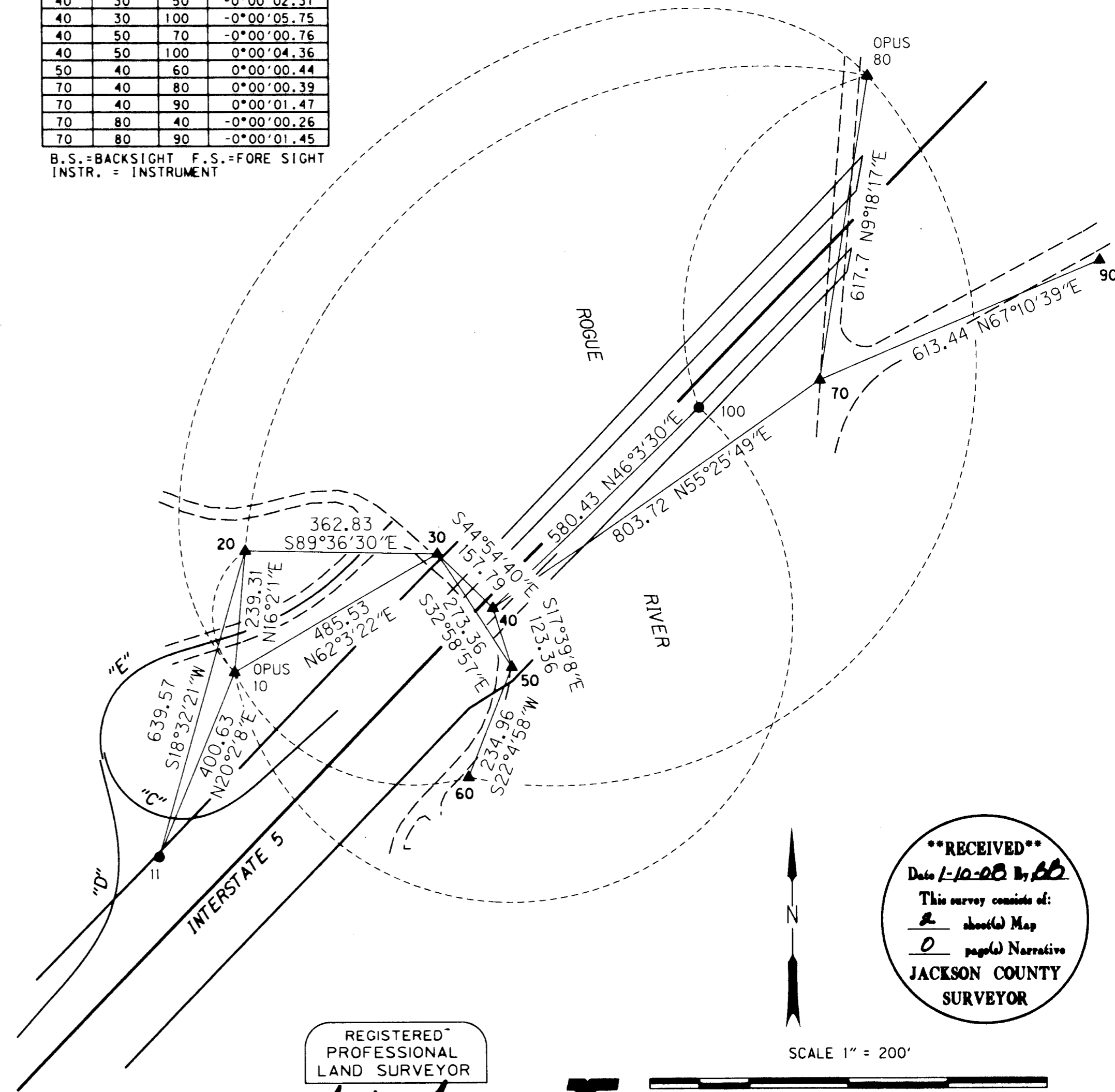
RIGHT OF WAY RESOLUTION
THE I-5 - HWY 60 CENTER LINE WAS ESTABLISHED BY HOLDING THE FOUND MONUMENT (1000) AS THE CENTER LINE, THE FOUND MONUMENT (1003) FOR STATION "1-5 690+00.00" AT A 125.00 FOOT OFFSET, AND THE FOUND MONUMENT (1007) AT A 125.00 FOOT OFFSET. REMAINING CENTER LINES AND RIGHT OF WAY LINES ARE SHOWN PER ODOT DRAWING NO. 88-6-5 AND ODOT CONSTRUCTION MAP NO. 7V-274, PROJECT 15-1(43)46 "VALLEY OF THE ROGUE PARK INTER. SECTION" DATED OCTOBER, 1962.

NETWORK/TRaverse POINT COORDINATE/DESCRIPTION TABLE LDP = LOCAL DATUM PLANE (SEE NARRATIVE)

Table with columns: PT. NO., LDP NORTHING, LDP EASTING, ELEV., DESCRIPTION
10 283657.2006 4211662.0790 1024.48 SET 5/8"x30" IRON ROD W/B BLUE PLASTIC CAP STAMPED "BLUEDOT CONTROL"
11 283280.8478 4211525.2203 1029.42 SET 5/8"x30" IRON ROD W/B BLUE PLASTIC CAP STAMPED "BLUEDOT CONTROL"
20 283887.2060 4211728.1735 1025.85 SET 5/8"x30" IRON ROD W/B BLUE PLASTIC CAP STAMPED "BLUEDOT CONTROL"
30 283884.7254 4212090.9940 1025.21 SET 5/8"x30" IRON ROD W/B BLUE PLASTIC CAP STAMPED "BLUEDOT CONTROL"
40 283772.9775 4212202.3972 1018.13 SET 5/8"x30" IRON ROD W/B BLUE PLASTIC CAP STAMPED "BLUEDOT CONTROL"
50 283655.4237 4212239.8044 1016.65 SET 5/8"x30" IRON ROD W/B BLUE PLASTIC CAP STAMPED "BLUEDOT CONTROL"
60 283437.6969 4212151.4692 1013.15 SET 5/8"x30" IRON ROD W/B BLUE PLASTIC CAP STAMPED "BLUEDOT CONTROL"
70 284229.0136 4212864.2117 1026.13 SET 5/8"x30" IRON ROD W/B BLUE PLASTIC CAP STAMPED "BLUEDOT CONTROL"
80 284838.5909 4212964.0854 1030.66 SET 5/8"x30" IRON ROD W/B BLUE PLASTIC CAP STAMPED "BLUEDOT CONTROL"
90 284466.9515 4213429.6283 1033.07 SET 5/8"x30" IRON ROD W/B BLUE PLASTIC CAP STAMPED "BLUEDOT CONTROL"
100 284175.7516 4212620.3354 1023.53 SET 5/8"x30" IRON ROD W/B BLUE PLASTIC CAP STAMPED "BLUEDOT CONTROL"

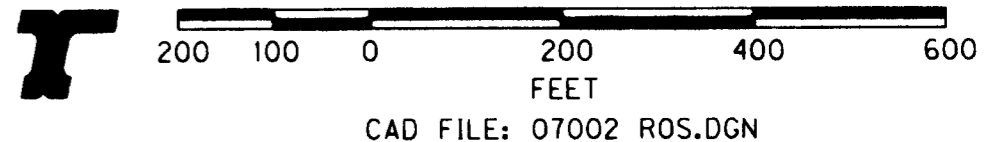
NETWORK/TRaverse POINT COORDINATE CONVERSION TABLE LDP = LOCAL DATUM PLANE (SEE NARRATIVE - SHEET 1) SPC = STATE PLANE COORDINATE ELEV. = ELEVATION

Table with columns: PT. NO., LDP NORTHING, LDP EASTING, SPC NORTHING, SPC EASTING, LATITUDE (N), LONGITUDE (W), STATION, OFFSET, ELEV., SEMI MAJOR AXIS, ORIENTATION, SEMI MINOR AXIS
10 283657.2006 4211662.0790 283637.7508 4211373.2929 42°24'51.661690 123°07'45.155650 1-5' 687+16.16 284.06 LT 1024.48 HELD HELD HELD
11 283280.8478 4211525.2203 283261.4238 4211236.4436 42°24'47.903592 123°07'46.821605 1-5' 689+26.74 397.76 LT 1029.42 0.0116 109°48' 0.0025
20 283887.2060 4211728.1735 283867.7404 4211439.3829 42°24'53.952982 123°07'44.371261 1-5' 691+78.82 136.81 LT 1025.85 0.0055 107°38' 0.0020
30 283884.7254 4212090.9940 283865.2600 4211802.1785 42°24'54.040948 123°07'39.536073 1-5' 691+76.93 20.97 RT 1025.21 0.0095 148°37' 0.0021
40 283772.9775 4212202.3972 283753.5197 4211913.5741 42°24'52.972198 123°07'38.005034 1-5' 691+19.11 129.95 RT 1018.13 0.0096 148°03' 0.0035
50 283655.4237 4212239.8044 283635.9739 4211950.9787 42°24'51.823199 123°07'37.457482 1-5' 689+01.75 219.18 RT 1016.65 0.0099 143°40' 0.0051
60 283437.6969 4212151.4692 283418.2621 4211862.6496 42°24'49.646254 123°07'38.543393 1-5' 699+65.80 174.73 RT 1013.15 0.0137 121°59' 0.0071
70 284229.0136 4212864.2117 284209.5245 4212575.3432 42°24'57.679512 123°07'29.377675 1-5' 704+71.20 180.42 LT 1026.13 0.0050 109°19' 0.0028
80 284838.5909 4212964.0854 284819.0601 4212675.2100 42°25'03.728680 123°07'28.301570 1-5' 705+31.41 412.22 RT 1030.66 HELD HELD HELD
90 284466.9515 4213429.6283 284447.4461 4213140.7210 42°25'00.203582 123°07'21.943352 1-5' 697+57.12 37.76 RT 1033.07 0.0128 156°54' 0.0055
100 284175.7516 4212620.3354 284156.2661 4212331.4836 42°24'57.078164 123°07'32.604836 1-5' 690+00.09 0.03 RT 1023.53 0.0195 141°59' 0.0054



REGISTERED PROFESSIONAL LAND SURVEYOR
Mark Mayer
OREGON JULY 14, 1998
MARK J. MAYER 2887
RENEWAL: 12-31-08

bluedot group
land surveying & mapping
6805 nw hampton, suite 101
portland, or 97223
v. 503.624.0108
f. 503.624.9068



RECEIVED
Date 1-10-08 By BB
This survey consists of:
2 sheet(s) Map
0 page(s) Narrative
JACKSON COUNTY SURVEYOR

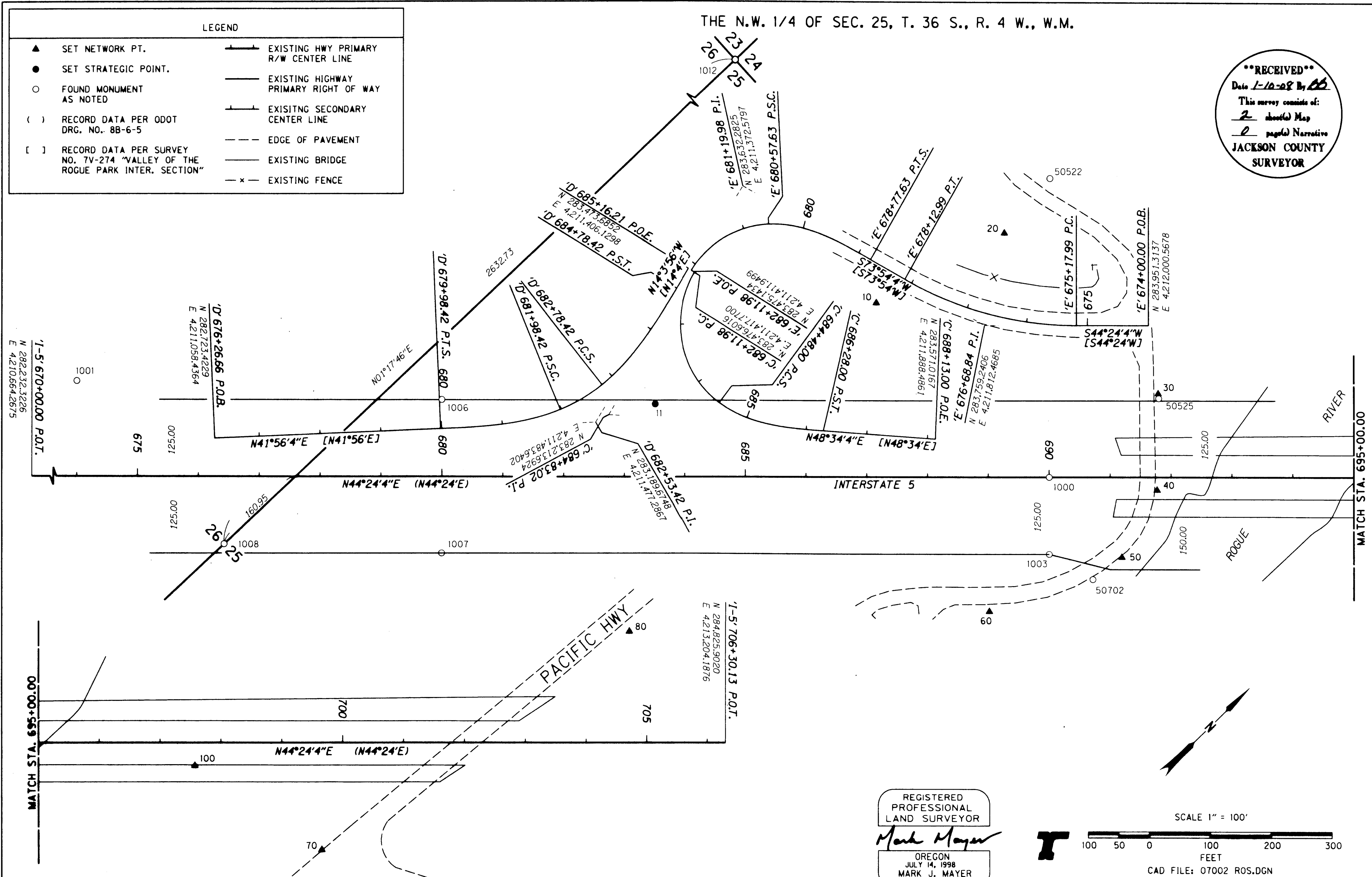
OREGON DEPARTMENT OF TRANSPORTATION
HORIZONTAL CONTROL, RECOVERY AND RETRACEMENT MAP
15 HOMESTEAD - HWY 60 BRIDGES NO. 08383N & 08383S
U.S. HIGHWAY 60 (INTERSTATE 5)
JACKSON COUNTY, OREGON
DECEMBER 20, 2007 FOR ODOT REGION 3 SCALE: 1" = 200'
3500 NW STEWART PKWY ROSEBURG, OR 97470
BUNDLE 313 SHEET 1 OF 2

LEGEND

- ▲ SET NETWORK PT.
- SET STRATEGIC POINT.
- FOUND MONUMENT AS NOTED
- () RECORD DATA PER ODOT DRG. NO. 8B-6-5
- [] RECORD DATA PER SURVEY NO. 7V-274 "VALLEY OF THE ROGUE PARK INTER. SECTION"
- +— EXISTING HWY PRIMARY R/W CENTER LINE
- EXISTING HIGHWAY PRIMARY RIGHT OF WAY
- +— EXISTING SECONDARY CENTER LINE
- EDGE OF PAVEMENT
- EXISTING BRIDGE
- x- EXISTING FENCE

THE N.W. 1/4 OF SEC. 25, T. 36 S., R. 4 W., W.M.

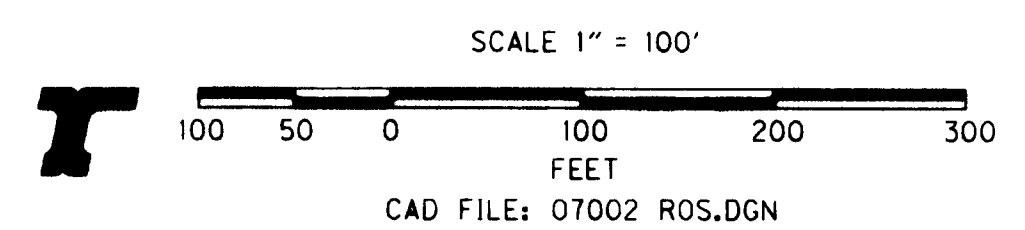
****RECEIVED****
 Date 1-10-08 By BB
 This survey consists of:
2 sheet(s) Map
2 page(s) Narrative
JACKSON COUNTY SURVEYOR



FOUND MONUMENT COORDINATE TABLE LDP = LOCAL DATUM PLANE (SEE NARRATIVE - SHEET 1)

PT. NO.	LDP NORTHING	LDP EASTING	STATION	OFFSET	DESCRIPTION
1000	213661.285	4212063.712	-1-5' 690+00.09	0.00 RT	FOUND 3" BRASS DISC STAMPED "STATE HIGHWAY DEPARTMENT" SET IN CONCRETE. HELD.
1001	213626.874	4210433.197	-1-5' 674+00.08	155.37 LT	FOUND 5/8" IRON ROD, NO CAP, UNDER WIRE FENCE. GOOD CONDITION.
1003	213573.804	4212152.906	-1-5' 690+00.08	125.00 RT	FOUND 5/8" IRON ROD, NO CAP, 0.2' DOWN, 0.6' SW OF 4x4 WOOD POST MARKED, "POT 690+00", HELD.
1006	213034.483	4211274.492	-1-5' 680+00.06	125.26 LT	FOUND 1/2" IRON ROD, 1.3' DOWN, BADLY BENT HORIZONTAL.
1007	212858.916	4211452.834	-1-5' 679+99.42	125.00 RT	FOUND 1/2" IRON ROD, 1.7' DOWN, SLIGHTLY BENT, 0.2' FROM "T" POST. HELD.
1008	212514.098	4211192.085	-1-5' 676+42.06	109.98 RT	FOUND 2-1/2" BRONZE CAP MARKED "JACKSON COUNTY 1980 T36S R4W 26:25 1/4 COR", HELD.
1012	212526.150	4211251.642	-1-5' 676+42.06	109.98 RT	FOUND 2-1/2" BRONZE CAP MARKED "JACKSON COUNTY 1975 T36S R4W 23:24 / 26:25", HELD.
50522	214003.123	4211716.534	-1-5' 675+92.62	236.33 RT	FOUND TOP OF COTTON GIN SCREW
50525	213879.895	4212097.206	-1-5' 691+79.72	128.99 LT	FOUND TOP OF COTTON GIN SCREW
50702	213595.960	4212232.552	-1-5' 690+71.56	166.37 RT	FOUND TOP OF COTTON GIN SCREW

REGISTERED PROFESSIONAL LAND SURVEYOR
Mark Mayer
 OREGON
 JULY 14, 1998
 MARK J. MAYER
 2887
 RENEWAL: 12-31-08



bluedot group
 land surveying & mapping
 8885 sw hampton, suite 101
 portland, or 97223
 v. 503.824.0108
 f. 503.824.9058

OREGON DEPARTMENT OF TRANSPORTATION
 HORIZONTAL CONTROL, RECOVERY AND RETRACEMENT MAP
 15 HOMESTEAD - HWY 60 BRIDGES NO. 08383N & 08383S
 U.S. HIGHWAY 60 (INTERSTATE 5)
 JACKSON COUNTY, OREGON
 DECEMBER 20, 2007 FOR ODOT REGION 3 SCALE: 1" = 100'
 3500 NW STEWART PKWY ROSEBURG, OR 97470
 BUNDLE 313 SHEET 2 OF 2