

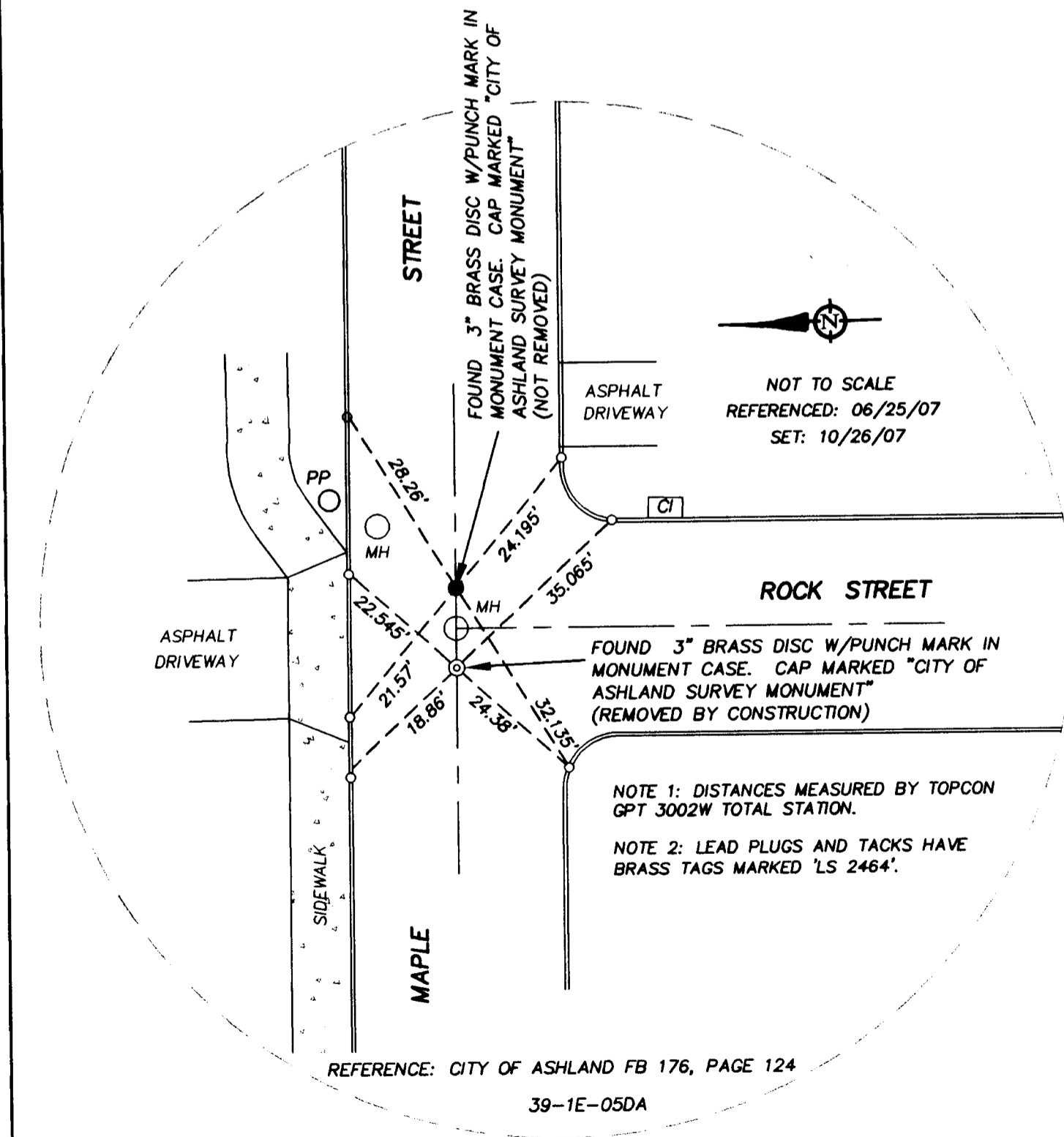
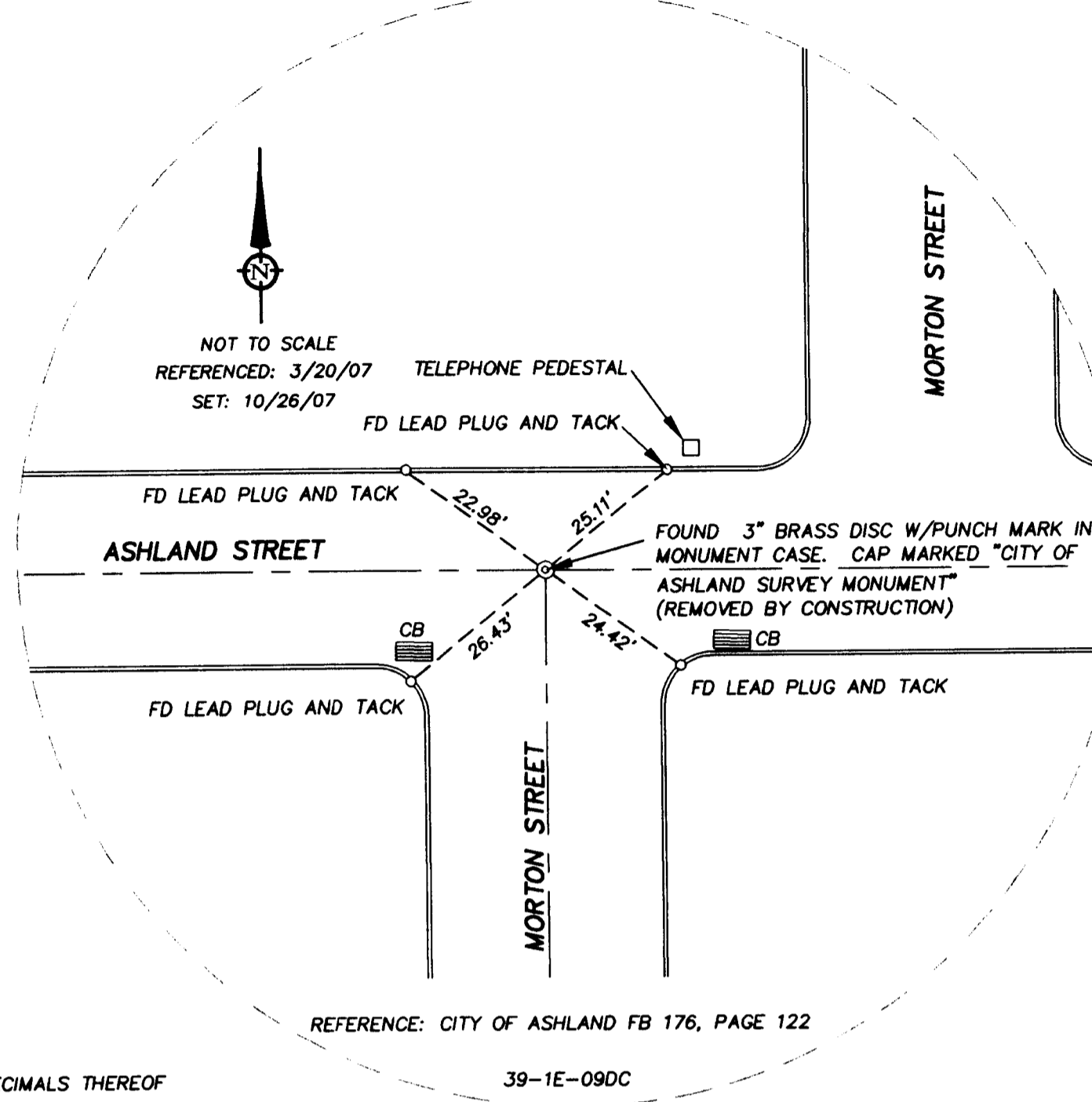
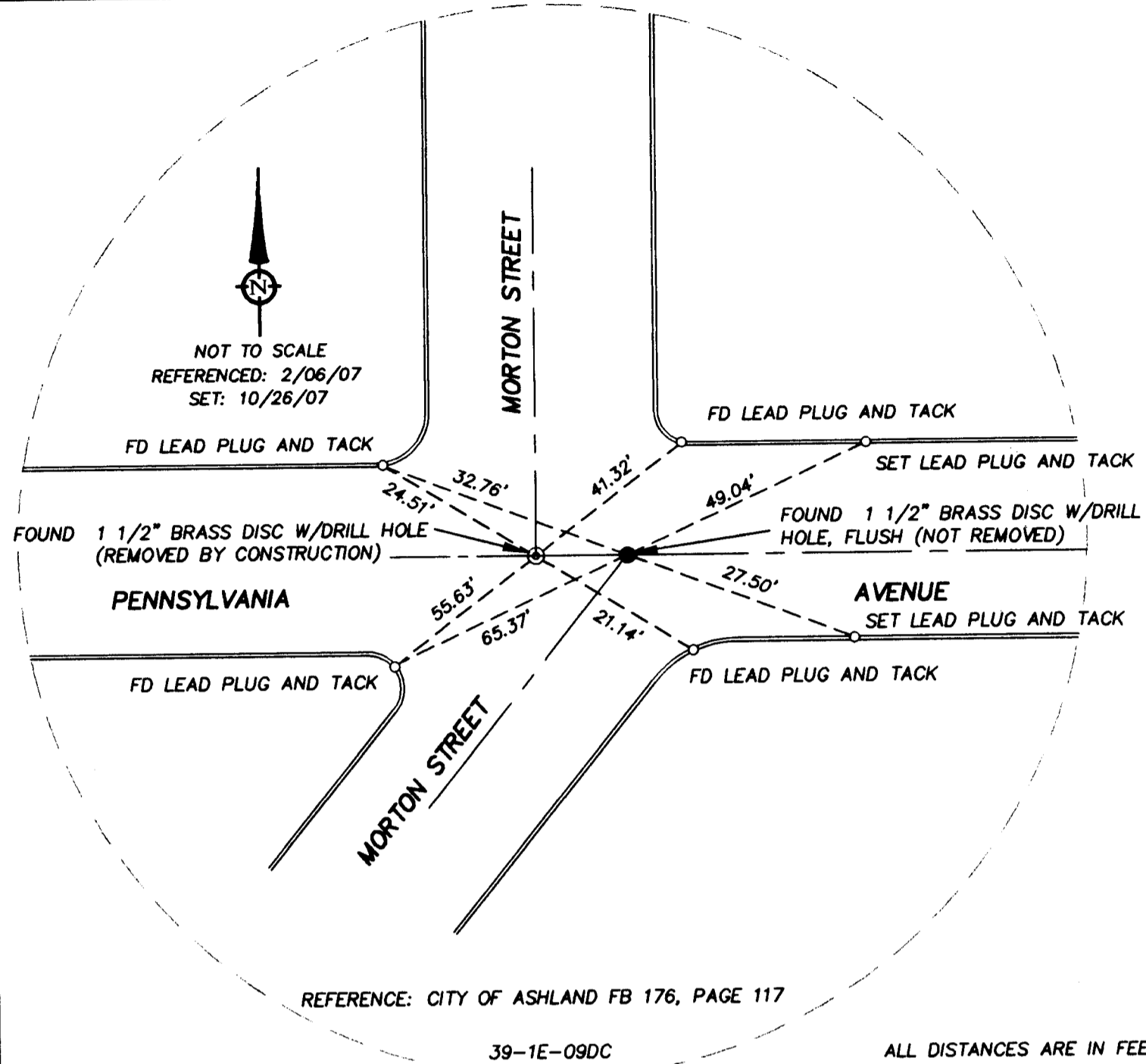
MAP OF SURVEY

FOR
CITY OF ASHLAND, ENGINEERING DIVISION
20 EAST MAIN STREET, ASHLAND, OREGON 97520

LOCATED IN
THE SE 1/4 OF SECTION 9, AND THE SE 1/4 OF SECTION 5
TOWNSHIP 39 SOUTH, RANGE 1 EAST, WILLAMETTE MERIDIAN,
CITY OF ASHLAND, JACKSON COUNTY, OREGON

LEGEND

- ⊙ SET 1" X 30" IRON PIPE W/3" DIAMETER BRASS CAP W/DRILL HOLE, STAMPED "CITY OF ASHLAND SURVEY MONUMENT LS 2464" IN STANDARD STREET MONUMENT CASE
- REFERENCE POINT: SET 3/16" DRILL HOLE W/LEAD PLUG AND TACK IN TOP OF CURB, UNLESS OTHERWISE NOTED
- FOUND MONUMENT AS NOTED, NOT REMOVED BY CONSTRUCTION, NOT REPLACED
- TOP OF CURB
- - - STREET CENTERLINE
- ▤ CB STORM DRAIN CATCH BASIN
- CI STORM DRAIN CURB INLET
- PP POWER POLE
- MH SANITARY SEWER OR STORM DRAIN MANHOLE
- FB FIELD BOOK



SURVEY NARRATIVE TO COMPLY WITH PARAGRAPH 209.250, OREGON REVISED STATUTES

PURPOSE:

To reference and replace monuments removed by various street and utility repair projects in Ashland.

PROCEDURE: Prior to construction, monuments were referenced by drilling holes in the concrete curbs and setting lead plugs and tacks. In some cases, lead plugs and tacks were found from previous reference surveys. After the street was paved or patched, new monuments and cases were set.

December 20, 2007

NOTES

1. ALL SET MONUMENTS ARE AT THE INTERSECTION OF REFERENCE POINTS.
2. ALL DISTANCES MEASURED LEVEL WITH CALIBRATED 100' STEEL TAPE, NATIONAL BUREAU OF STANDARDS NO. 13683, UNLESS OTHERWISE NOTED

I CERTIFY THAT THIS SURVEY WAS PREPARED WITH HEWLETT PACKARD INK #51640A ON COMSTOCK MYLAR #130444.

Stuart M. Osmus
STUART M. OSMUS, PLS 2464

*** RECEIVED ***
Date 12-21-07 By *MS*
This Survey Consists of:
1 Sheets Map
2 Pages Narrative
JACKSON COUNTY
SURVEYOR

REGISTERED
PROFESSIONAL
LAND SURVEYOR
Stuart M. Osmus
OREGON
JULY 28, 1993
STUART M. OSMUS
No. 2464
Expires 12/31/08

TERRASURVEY, INC.
PROFESSIONAL LAND SURVEYORS
274 FOURTH STREET
ASHLAND, OREGON 97520
(541) 482-6474
terrain@bisp.net